

www.crystal-display.com
info@crystal-display.com
+44(0)1634 327420



Touch Panel Computer Sales kit



All-in-One Touch Panel Computers

Vertical Market

Value
GOT5000

Tough IP66
GOT800

Ind. Monitor
P6000

Healthcare &
Medical PC
MPC & MMT

Rolling Stock
GOT700

Wide Temp
GOT3000

Ind. TPC
P1000

Open Frame
FDK

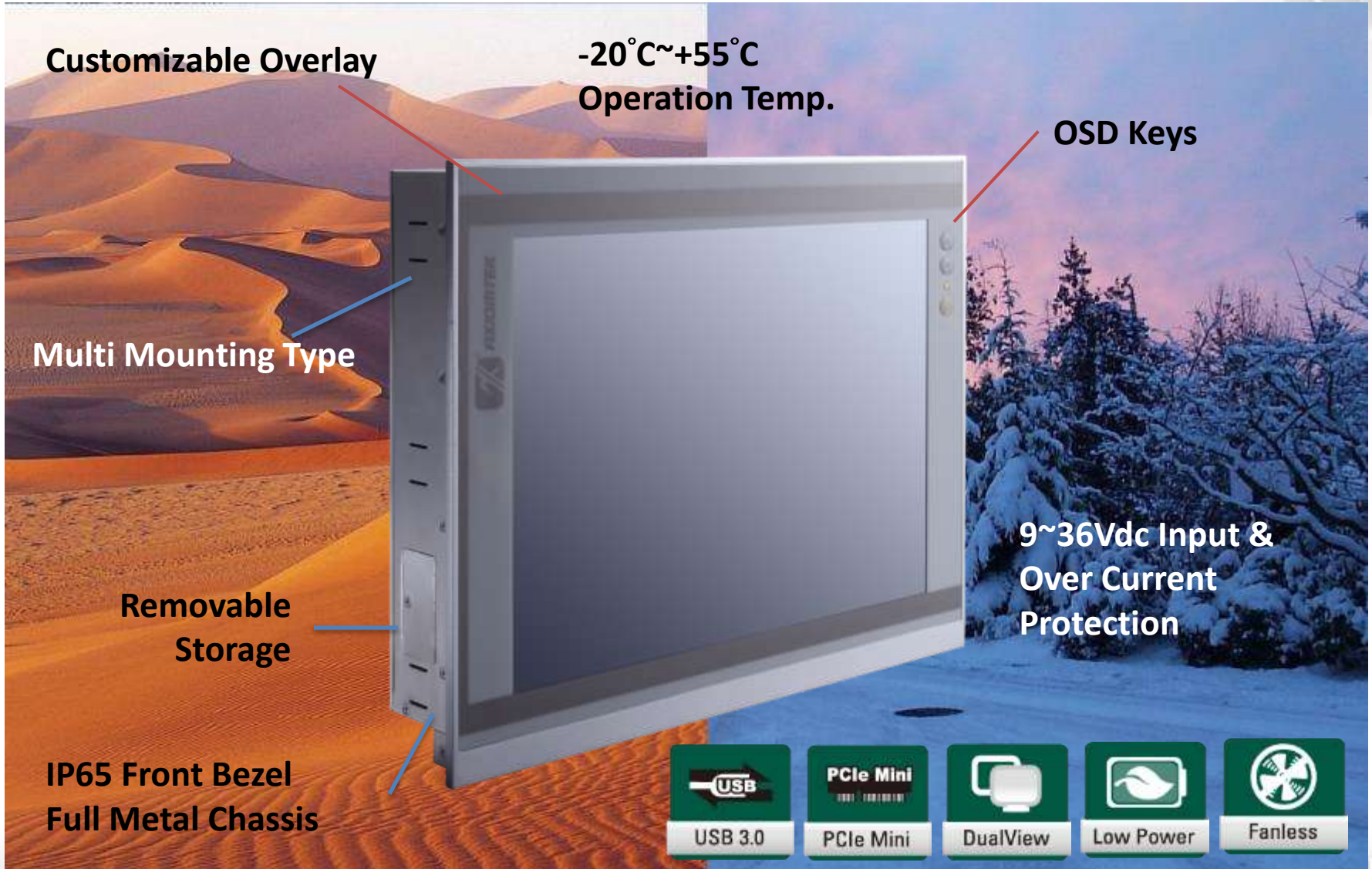
Infotainment
IFO

All-in-One Touch Panel Computers

**Wide Temp
GOT3000**



GOT31x6 Offerings



GOT31x6 Overview



GOT3846T



GOT3106T



GOT3126T



GOT3156T

5W. Resistive touch

Intel® N2600 (-832 series for 8.4"~15")
Intel® E3827 (-834 series for 12.1"~15")

450nits

400nits

600nits

400nits

SVGA 800x600

XGA 1024x768

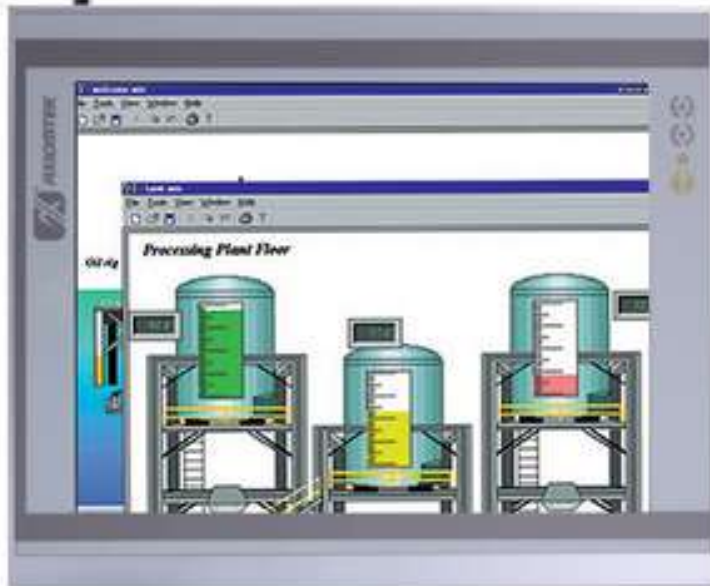
GOT31x6 Product Specification

CPU	Intel® Atom N2600 (-832) or E3827 (-834)
Memory	1 x 204-pin SO-DIMM DDR3 up to 2 GB (-832) 1 x 204-pin SO-DIMM DDR3L up to 8 GB (-834)
Storage	1 x 2.5" SATA HDD, 1 x CF (-832 series) 1 x 2.5" SATA HDD, 1 x mSATA or CFast (-834 series)
I/O Ports	3 or 4 x RS-232/422/485 ports 2 x RJ45 for Giga Ethernet with Intel chipset 4 x USB 2.0 or 2 x USB2.0 + 2 x USB3.0 1 x DC terminal plug 1 x Switch for power on/off (ATX) 1 x VGA output 1 x Line-out
Expansion	1 or 2 x PCIe Mini Card Slot
LCD Size	8.4" / 10.4" / 12.1" / 15"
Touch	5 Wire Resistive Touch
IP Grade	IP65 front bezel
Power	Wide voltage input (10~30V or 9~36V)



Product Features

PCIe Mini card slot for wireless module & antenna expansion



-20°C~+55°C



Wide temperature



IP65 Front Bezel

Aluminum front & rear
(Good heat dissipation
& less weight)



Product Features



OSD for LCD control function

Resistive Touch Screen

Customizable Overlay
(Neutral or customer's brand)

VGA output for dual view function

9~36Vdc input with
over current protection

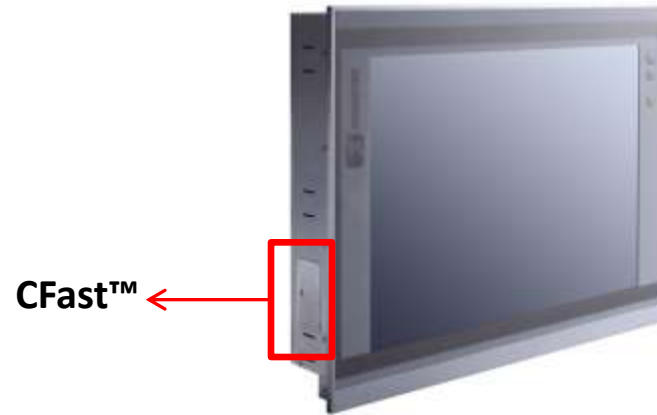


RS-232/422/485 COM ports selected
by jumper or BIOS

Product Features

Multi – Storage Device

SATA	Supports 1 x 2.5" HDD or SSD (w/ anti-vibration design)
CFast™	1 x CFast™ slot on the top side
mSATA	1xmSATA (PCIe Mini Card slot)
USB 3.0	Using USB thumb drive for mobile operation system



2.5" HDD / SSD

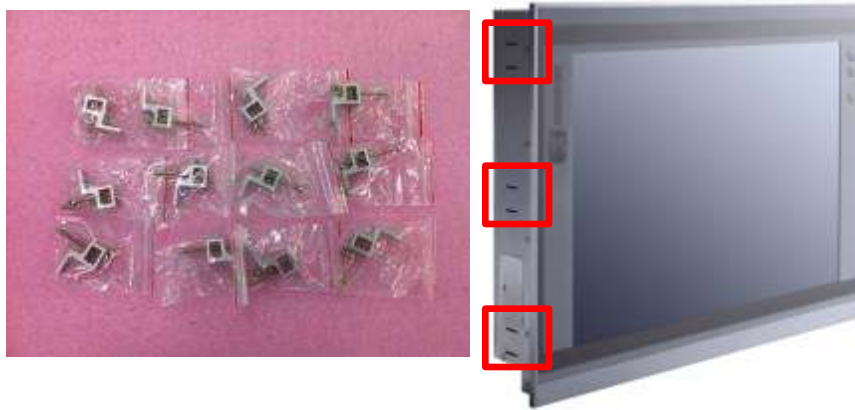


mSATA

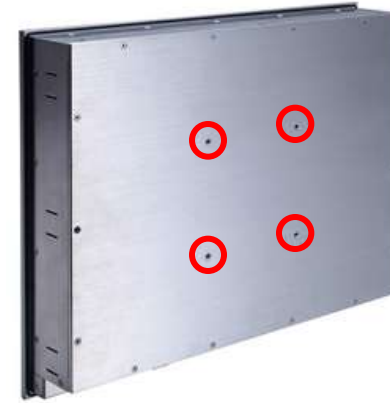


Product Features

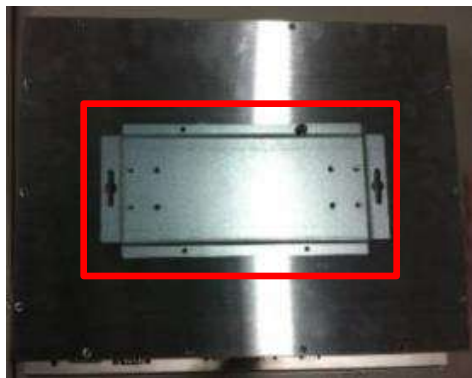
Panel Mount



VESA Mount (VESA 100)



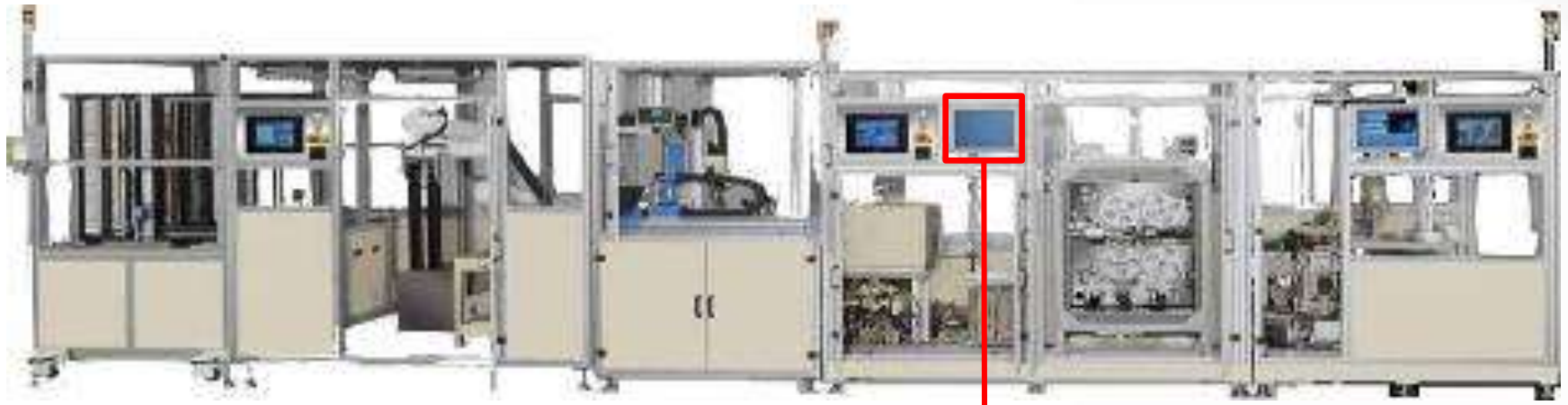
Wall Mount



Desktop Stand



Application - Automation HMI



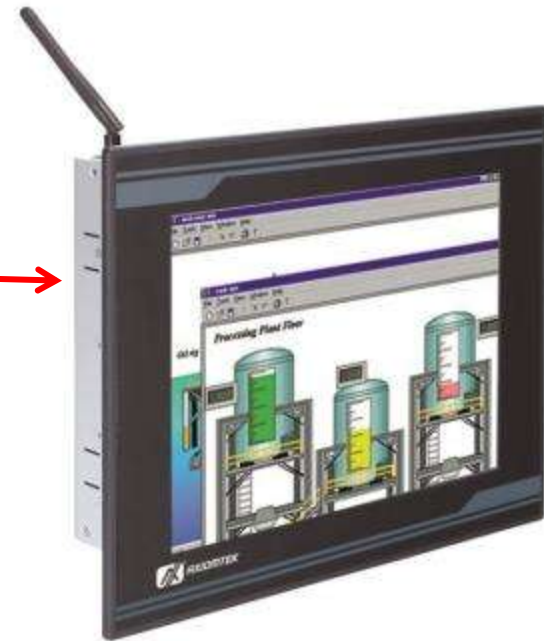
GOT3156

Why Axiomtek?

- Dual Gigabit Ethernet ports for high speed automation application
- Fanless & IP65 front bezel with 5 wire Resistive touch
- Wide voltage power input & over current protection

Application - Train Monitoring

GOT3100T enables driver for train monitoring.



Why Axiomtek?

- Fanless & IP65 front bezel protection w/ Touch
- Wide operating temperature: -20°C ~ +55°C
- Wide voltage power input & over current protection

GOT31x6 Summary

1

Extended operation temperature with fanless & IP65 front design

2

From 8.4" to 15" product line with rugged full metal housing 、 rich I/O & multi mounting way

3

Wide voltage power input and over current protection

GOT31x6 Selection Guide (part i)

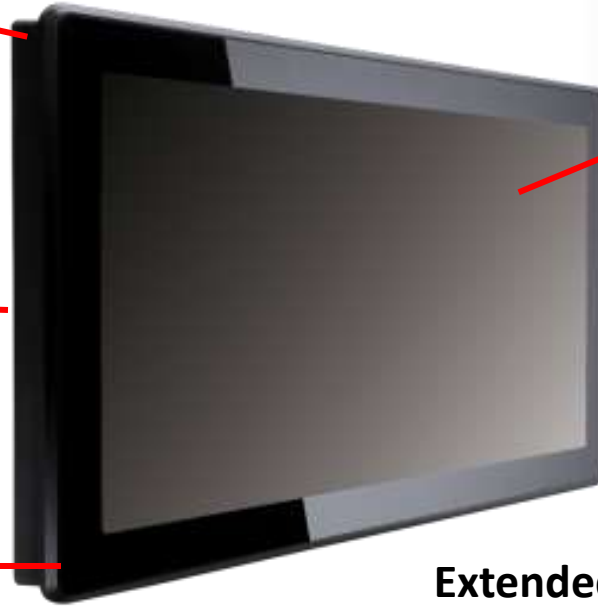
Features /Models	GOT3156T-834	GOT3156T-832	GOT3126T-834	GOT3126T-832
Mainboard	SBC87834 (SoC integrated)	SBC87832 (Intel® NM10)	SBC87834 (SoC integrated)	SBC87832 (Intel® NM10)
CPU	Intel® Atom™ processor E3827 1.75 GHz	Intel® Atom™ processor N2600 1.6 GHz	Intel® Atom™ processor E3827 1.75 GHz	Intel® Atom™ processor N2600 1.6 GHz
Memory	1 x 204-pin SO-DIMM DDR3L up to 8 GB	1 x 204-pin SO-DIMM DDR3 up to 2 GB	1 x 204-pin SO-DIMM DDR3L up to 8 GB	1 x 204-pin SO-DIMM DDR3 up to 2 GB
Storage	1 x 2.5" SATA HDD 1 x mSATA or CFast card slot	1 x 2.5" SATA HDD 1 x CF card slot	1 x 2.5" SATA HDD 1 x mSATA or CFast card slot	1 x 2.5" SATA HDD 1 x CF card slot
Bottom side I/O	4 x RS-232/422/485	3 x RS-232 1 x RS-232/422/485	3 x RS-232/422/485	2 x RS-232 1 x RS-232/422/485
	2 x RJ-45 for Giga Ethernet	2 x RJ-45 for Giga Ethernet	2x RJ-45 for Giga Ethernet	2x RJ-45 for Giga Ethernet
	2 x USB 2.0 2 x USB 3.0	4 x USB 2.0	2 x USB 2.0 2 x USB 3.0	4 x USB 2.0
	1 x DC plug	1 x DC plug	1 x DC plug	1 x DC plug
	1 x Switch for power on/off	1 x Switch for power on/off	1x Switch for power on/off	1x Switch for power on/off
	1 x VGA	1 x VGA	1 x VGA	1 x VGA
	1 x Line-out	1 x Line-out	1 x Line-out	1 x Line-out
Expansion	2 x PCIe Mini card slots	1 x PCIe Mini card slot	2 x PCIe Mini card slot	1 x PCIe Mini card slot
OS	Win 7(64bit), Win 8, WES7, WE8S	Win XP, Win 7, WES, WES 7	Win 7(64bit), Win 8, WES7, WE8S	Win XP, Win 7, WES, WES 7

GOT31x6 Selection Guide (part ii)

Features/ Models	GOT3106T-832	GOT3846T-832
Mainboard	SBC87832 (Intel® NM10)	SBC87832 (Intel® NM10)
CPU	Intel® Atom™ processor N2600 1.6 GHz	Intel® Atom™ processor N2600 1.6 GHz
Memory	1 x 204-pin SO-DIMM DDR3 up to 2 GB	1 x 204-pin SO-DIMM DDR3 up to 2 GB
Storage	1 x 2.5" SATA HDD 1 x CF card slot	1 x 2.5" SATA HDD 1 x CF card slot
Bottom side I/O	2 x RS-232 1 x RS-232/422/485	3 x RS-232 1 x RS-232/422/485
	2x RJ-45 for Giga Ethernet	2x RJ-45 for Giga Ethernet
	4 x USB 2.0	4 x USB 2.0
	1 x DC plug	1 x DC plug
	1x Switch for power on/off	1x Switch for power on/off
	1 x VGA	1 x VGA
	1 x Line-out	1 x Line-out
Expansion	1 x PCIe Mini card slot	1 x PCIe Mini card slot
OS	Win XP, Win 7, WES, WES 7	Win XP, Win 7, WES, WES 7

GOT31x7 Offerings

Elegant Flat design



PCAP multi-touch
(7H hardness)
or flat resistive touch

Multi mount type

Aluminum front bezel

Extended operation temp.



Modular system boxes design

GOT31x7 Overview



GOT3177T



GOT3157W



GOT3187W



GOT3217W(planning)

Flat Res. touch

Project capacitive multi touch

Intel® D2550 (-832 series, 15.6", 18.5")
 Intel® J1900 (-834 series, 15.6", 17", 18.5")
 AMD T56N (-111 series, 15.6", 18.5")

Intel® Haswell LGA1150 socket
 (-881 series, 18.5", 21.5")

350nits

400nits

300nits

250nits

SXGA
1280x1024

WXGA
1366x768

Full HD
1920x1080

GOT31x7 Product Specification

CPU	D2550 (-832), T56N (-111) J1900 (-834), 4th LGA1155 socket (-881)
Memory	1 x 204-pin SO-DIMM DDR3 up to 4 GB (-832 & -111) 1 x 204-pin SO-DIMM DDR3 up to 8 GB (-881) 1 x 204-pin SO-DIMM DDR3L up to 8 GB (-834)
Storage	1 x 2.5" SATA HDD, 1 x CF (-832 & -111) 1 x 2.5" SATA HDD, 1 x mSATA/CFast (-834 & -881)
I/O Ports	2 x RS-232/422/485 ports 2 x RJ-45 for Giga Ethernet with Intel® chipset 4 x USB 2.0 or 2 x USB 2.0 + 2 x USB 3.0 1 x DC terminal plug or screw type connector 1 x Switch for power on/off (ATX) 1 x Line-out
Expansion	1 or 2 x PCIe Mini Card Slot
LCD Size	15.6" / 17" / 18.5" / 21.5"
Touch	PCAP multi-touch or flat resistive touch
IP Grade	IP65 front bezel
Power	Wide voltage input (10~30V or 9~36V)



-832 & -834



-111

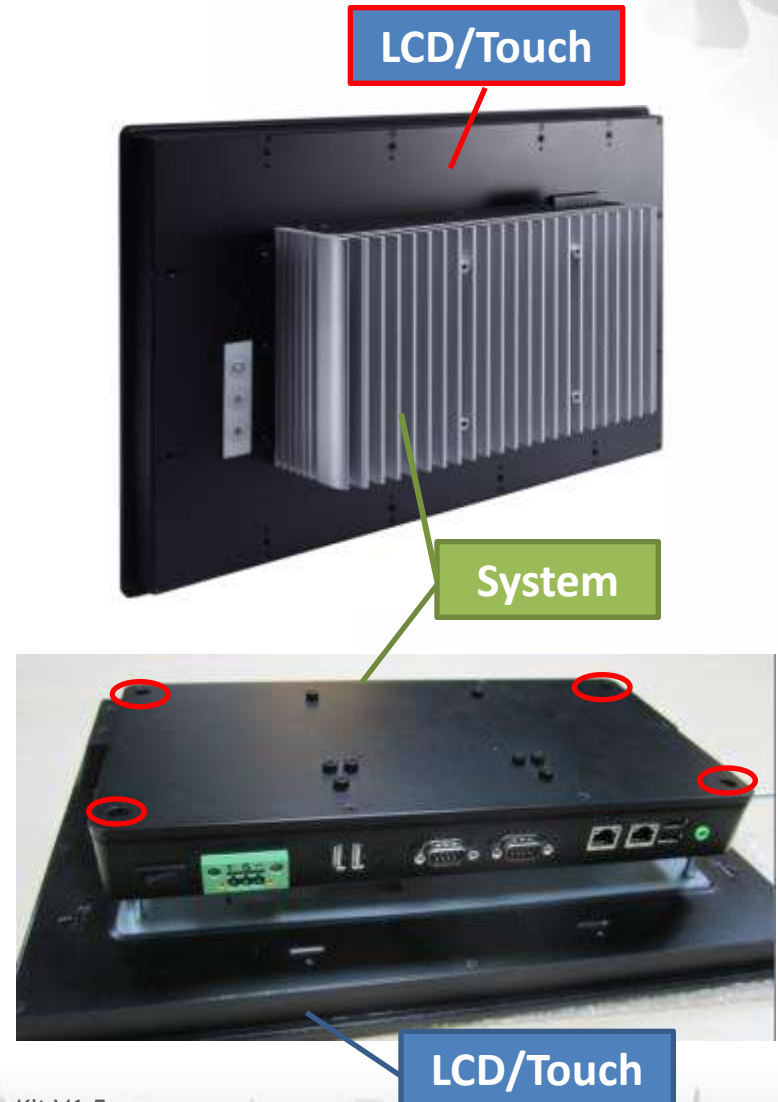
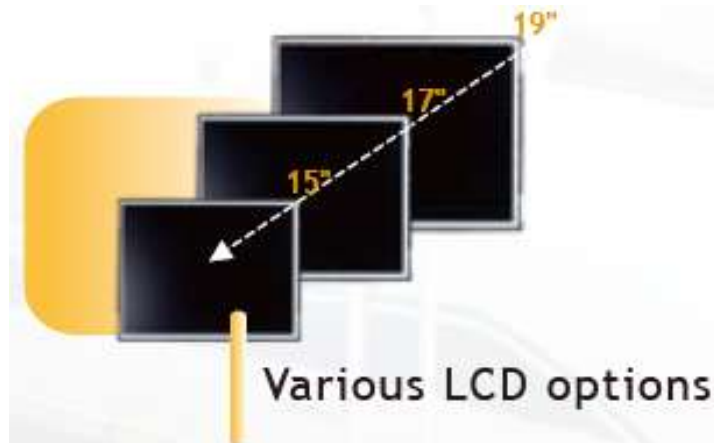


-881

Product Features

Modular Design

- **Flexible for different combination**
 - Various LCD: 15.6" ~ 21.5"
 - Diverse platform: Intel® or AMD
 - Different touch: PCAP, Resistive Touch
 - Different power: AC or DC
- **Easy assembly & maintain**
- **Time to market**



Product Features

Projected Capacitive touch

- Anti-scratch Surface for 6H hardness glass front surface
- Higher transparency
- 2 points multi touch
- Flexibility for hand and glove



Full Flat Bezel Design

- Seamless bezel design
- Prevent from dust and dirt
- More fashionable looks

Product Features



-832

**Intel® Atom
D2550 (-832) 1.86GHz**

XP, Win 7, WES 7

10~30VDC

N/A

1 Mini PCIe slot



-834

**Intel® Celeron
J1900 (-834) 2.0GHz**

**Win 7, Win 8
WES 7, WE8S**

**9~36Vdc
AC screw type(-834)**

N/A

2 Mini PCIe slots



-111

AMD T56N 1.65GHz

**Win XP, Win 7, Win 8
WES, WES 7, Linux**

**10~30Vdc
AC screw type(-834)**

1 VGA output

1 Mini PCIe slot

Product Features



-881

**LGA1150 socket Intel®
i7/i5/i3 and Celeron**

**Win 7, Win 8, WES 7
WE8S, Linux**

**4-pin power din
AC adapter**

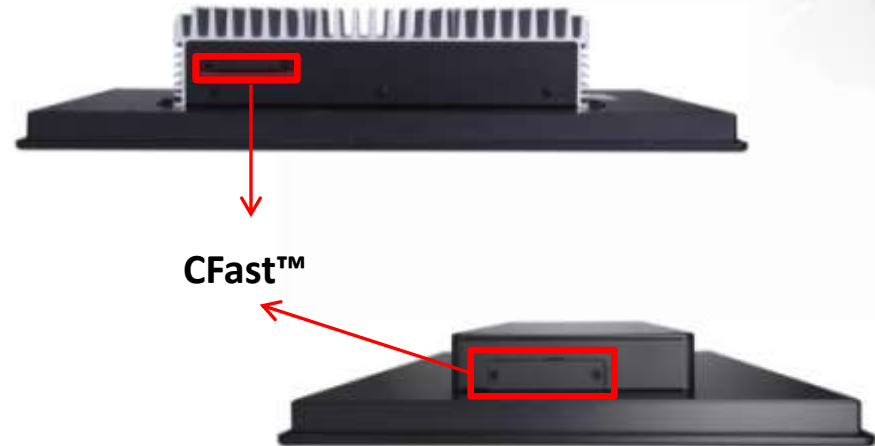
1 HDMI output

2 Mini PCIe slots

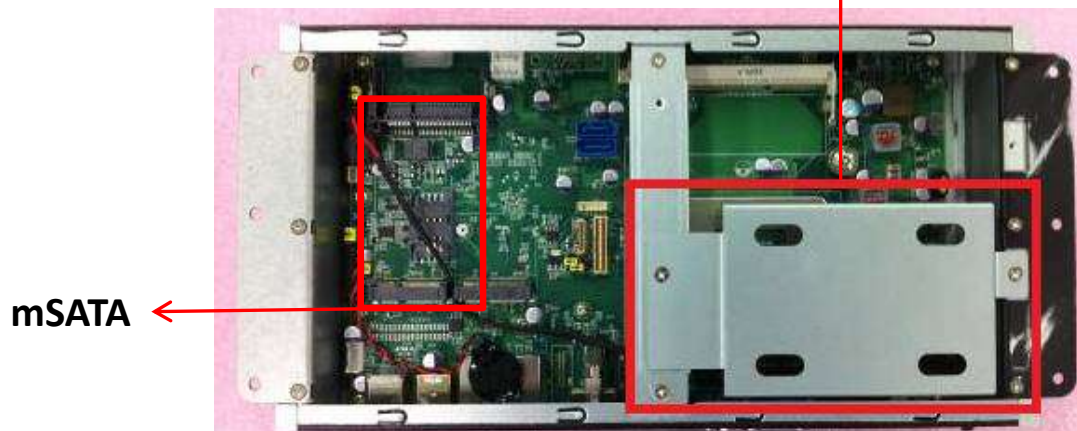
Product Features

Multi – Storage Device

SATA	Supports 1 x 2.5" HDD or SSD (For large capacity storage)
CFast™	1 x CFast™ slot
mSATA	1 x mSATA (Mini PCIe slot)
USB 3.0	Using USB thumb drive for mobile operation system

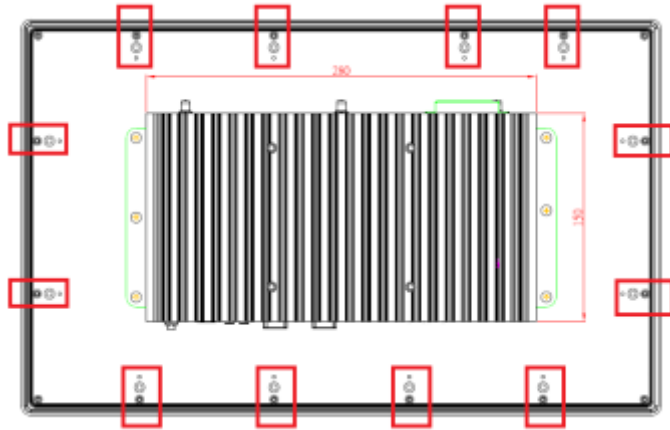


2.5" HDD / SSD



Product Features

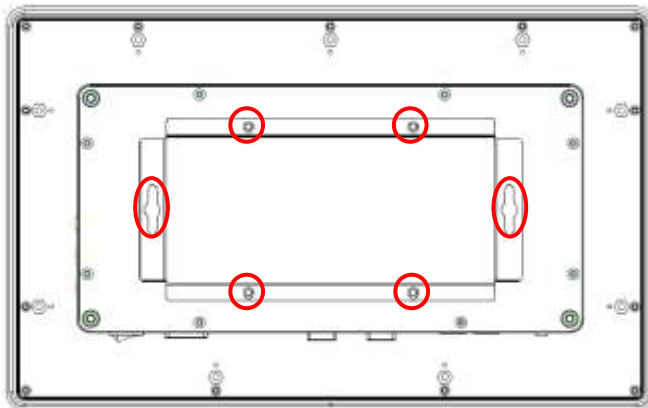
Panel Mount



VESA 100



Wall Mount



Desktop Stand



Product Features

-881 series: LGA 1150 socket support 4th gen Intel® Core i7/i5/i3 & Celeron processor

Proc No.	TDP	Core	Threads	Frequency	Cache	Graphic	DDR3 (MHz)
i7-4770TE	45W	4C	8T	2.3GHz (3.3GHz)	8MB	HD Graphics 4600	1333 / 1600
i5-4570TE	35W	2C	4T	2.7GHz (3.3GHz)	4MB	HD Graphics 4600	1333 / 1600
i3-4330TE	35W	2C	4T	2.4GHz	4MB	HD Graphics 4600	1333 / 1600
G3320TE	35W	2C	2T	2.3GHz	3MB	HD Graphics	1333
G1820TE	35W	2C	2T	2.2GHz	2MB	HD Graphics	1333

Application - Product Line HMI

HMI for bottle inspection

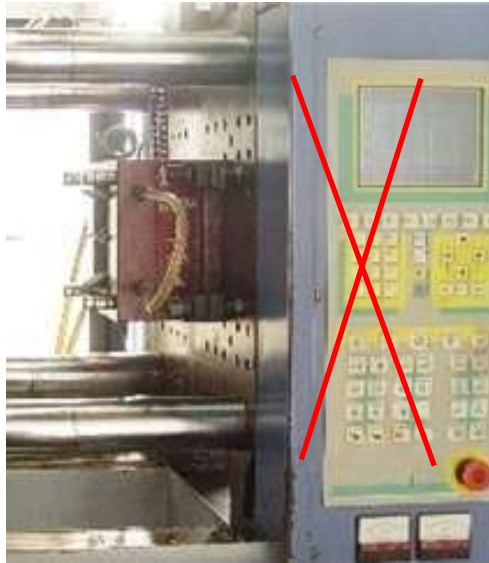
GOT3157W-832 is connected to a IP cam to inspect bottles in production lines

Why Axiomtek?

- Fanless & IP65 front bezel design
- Multi mount way & storage
- PCAP multi-touch with 7H hardness



Application - Injection Machine HMI



Portrait HMI replaces control buttons

GOT3187W

Why Axiomtek?

- Fanless design & extended temperature
- IP65 front bezel protection
- PCAP multi-touch with 7H hardness



GOT31x7 Summary

1

Low end to high end modular system boxes with rich I/O & mounting type for flexible application

2

Elegant aluminum housing design with PCAP multi-touch or flat resistive touch

3

9~36Vdc wide voltage power input with over current protection

GOT31x7 Selection Guide (part i)

Features /Models	GOT3157W-834	GOT3157W-832	GOT3157W-111
Mainboard	SBC87834 (SoC integrated)	SBC87832 (Intel® NM10)	CAPA111 (AMD A50M)
CPU	Intel® Celeron™ processor J1900 2.0 GHz	Intel® Atom™ processor D2550 1.86 GHz	AMD G series processor T56N 1.65GHz
Memory	1 x 204-pin SO-DIMM DDR3L up to 8 GB	1 x 204-pin SO-DIMM DDR3 up to 4 GB	1 x 204-pin SO-DIMM DDR3 up to 4 GB
Storage	1 x 2.5" SATA HDD 1 x mSATA or CFast card slot	1 x 2.5" SATA HDD 1 x CF card slot	1 x 2.5" SATA HDD 1 x CF card slot
Bottom side I/O	2 x RS-232/422/485	1 x RS-232 1 x RS-232/422/485	1 x RS-232 1 x RS-232/422/485
	2 x RJ-45 for Giga Ethernet	2 x RJ-45 for Giga Ethernet	2x RJ-45 for Giga Ethernet
	2 x USB 2.0 2 x USB 3.0	4 x USB 2.0	4 x USB 2.0
	1 x DC plug or screw type adapter	1 x DC plug	1 x DC plug or screw type adapter
	1 x Switch for power on/off	1 x Switch for power on/off	1x Switch for power on/off
	N/A	N/A	1 x VGA
	1 x Line-out	1 x Line-out	1 x Line-out
Expansion	2 x PCIe Mini card slot	1 x PCIe Mini card slot	1 x PCIe Mini card slot
OS	Win 7(64bit), Win 8, WES7, WE8S	Win XP, Win 7, WES, WES 7	Win XP, Win 7, Win 8, WES, WES 7, Linux

GOT31x7 Selection Guide (part ii)

Features /Models	GOT3187W-834	GOT3187W-832	GOT3187W-111	GOT3187W-881
Mainboard	SBC87834 (SoC integrated)	SBC87832 (Intel® NM10)	CAPA111 (AMD A50M)	SBC87881 (Intel® H81)
CPU	Intel® Celeron™ processor J1900 2.0 GHz	Intel® Atom™ processor D2550 1.86 GHz	AMD G series processor T56N 1.65GHz	LGA1150 Socket Intel® Core™ i7/i5/i3 and Celeron® processor
Memory	1 x 204-pin SO-DIMM DDR3L up to 8GB	1 x 204-pin SO-DIMM DDR3 up to 4GB	1 x 204-pin SO-DIMM DDR3 up to 4GB	1 x 204-pin SO-DIMM DDR3 up to 8GB
Storage	1 x 2.5" SATA HDD 1 x mSATA or CFast card slot	1 x 2.5" SATA HDD 1 x CF card slot	1 x 2.5" SATA HDD 1 x CF card slot	1 x 2.5" SATA HDD 1 x mSATA & CFast card slot
Bottom side I/O	2 x RS-232/422/485	1 x RS-232 1 x RS-232/422/485	1 x RS-232 1 x RS-232/422/485	2 x RS-232/422/485
	2 x RJ-45 for Giga Ethernet	2 x RJ-45 for Giga Ethernet	2x RJ-45 for Giga Ethernet	2x RJ-45 for Giga Ethernet
	2 x USB 2.0 2 x USB 3.0	4 x USB 2.0	4 x USB 2.0	2 x USB 2.0 2 x USB 3.0
	1 x DC plug or screw type adapter	1 x DC plug	1 x DC plug or screw type adapter	1 x lock type adapter
	1 x Switch for power on/off	1 x Switch for power on/off	1x Switch for power on/off	1x Switch for power on/off
	N/A	N/A	1 x VGA	1 x HDMI
	1 x Line-out	1 x Line-out	1 x Line-out	1 x Line-out, 1 x MIC-in
Expansion	2 x PCIe Mini card slot	1 x PCIe Mini card slot	1 x PCIe Mini card slot	2 x PCIe Mini card slot
OS	Win 7(64bit), Win 8, WES7, WE8S	Win XP, Win 7, WES, WES 7	Win XP, Win 7, Win 8, WES, WES 7, Linux	Win 7, Win 8, WES 7, WE8S, Linux

All-in-One Touch Panel Computers

Value

Value
GOT5000

GOT5000 Overview



GOT5840T

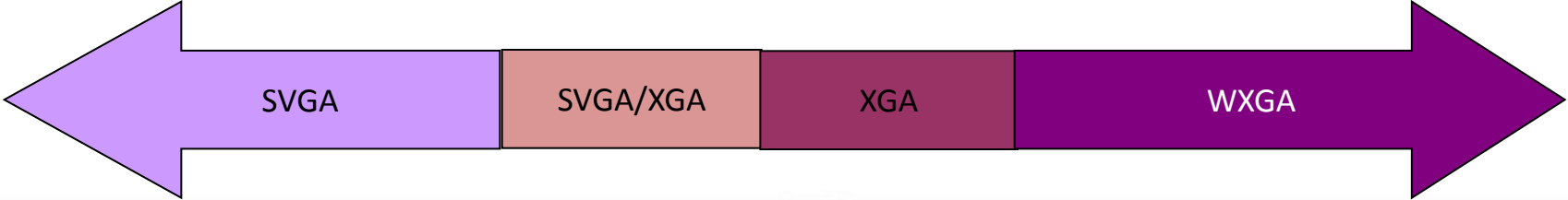
GOT5100T

GOT5120T

GOT5152T

GOT5153W

5-wire resistive touch				PCT/5-wire resistive touch
Intel® N2600 (-832 series for 8.4"~12.1") Intel® D2550 (-832 series for 15") Intel® J1900 (-834 series)				Intel® J1900
400nits	400nits	450/500nits	400nits	300nits



GOT5000T Offerings (4:3 Resolution)

Good thermal design:
aluminum rear cover

Water/Dust proof
design: IP65 front
bezel

Super slim design



Supports WLAN &
internal antenna

Supports customized
overlay

Ultra light design:
plastic housing

GOT5000T Specification

CPU Intel® Atom N2600 2 cores @1.6GHz/D2550 @1.86GHz (-832)
Intel® Celeron J1900 4 Cores @2.0GHz (-834)

Memory 1 x 204-pin DDR3 SO-DIMM max. up to 2 or 4GB (-832)
1 x 204-pin DDR3L SO-DIMM max. up to 8GB (-834)

Display 8.4"~15" TFT LCD w/LED backlight

Storage 1 x 2.5" SATA HDD & 1 x CF (-832)
1 x 2.5" SATA HDD & 1 x CFast or mSATA (-834)

I/O Ports RS-232 (-832)
RS-232/422/485
Gigabit Ethernet
USB 3.0 (-834), USB 2.0
Switch for power on/off (ATX)
VGA
Line-out

Expansion 2 x mini card slot

Power input AC w/adapter or terminal block



Product Features

- Low power, better performance, supports Intel® Atom™ Dual Core processor N2600 1.6 GHz/D2550 1.86 GHz Intel® Celeron J1900 4 cores @2.0 GHz
- Modern design: industrial plastic front bezel
- Good thermal solution: aluminum chassis (patent), supports 0°C~50°C



Super slim design

Product Features

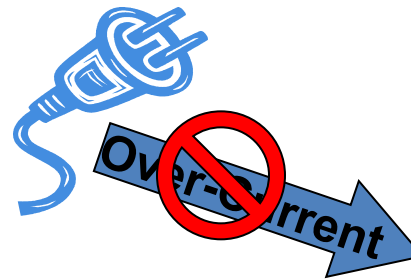


Ultra light: 1.3kg

Super slim: 44 mm



Desktop / Wall / Panel Mount



Product Features

- Easy-to-plug CF card
- WLAN/GPRS/3G expansion: Mini Card
- Wireless LAN: Internal antenna
- RFID for optional



Application - HMI in Sawmill

HMI in sawmill

GOT5120T used in sawmill in New Zealand.



Why Axiomtek?

- Fanless design
- IP65 front bezel protection
- Cost effective

Application - Logistics Company

HMI in logistics company

GOT5100T-832 used in logistics company in Taiwan.



Why Axiomtek?

- Fanless design
- Supports internal antenna
- Ultra slim & super light design

Application - Airport Toilets

Panel PC in Chiangi airport toilets



Why Axiomtek?

- Fanless design
- IP65 front bezel protection
- Supports internal antenna

Application - Smokehouse

HMI in smokehouses

GOT5100T-832 used in smokehouses in South Africa.

Why Axiomtek?

- Ultra slim & super light design
- IP65 front bezel protection
- Cost effective



Application - Ramen Chain Store

Kitchen display system in ramen chain store in Japan



Why Axiomtek?

- Ultra slim & super light design
- IP65 front bezel protection
- Supports internal antenna

GOT5000T Summary

1

Cost effective solution

2

Ultra slim and super light design

3

Complete lines

From 8.4" ~ 15" in various platform

GOT5153W Offerings (16:9 resolution)

**Good thermal design:
aluminum rear cover**

**Water/Dust proof
design: IP65 front
bezel**



Build-in speaker



**Users friendly interface
design: front OSD**

**Supports customized
overlay**



**Supports WLAN &
internal antenna**

**Elegant ID &
true flat bezel
design**

Application

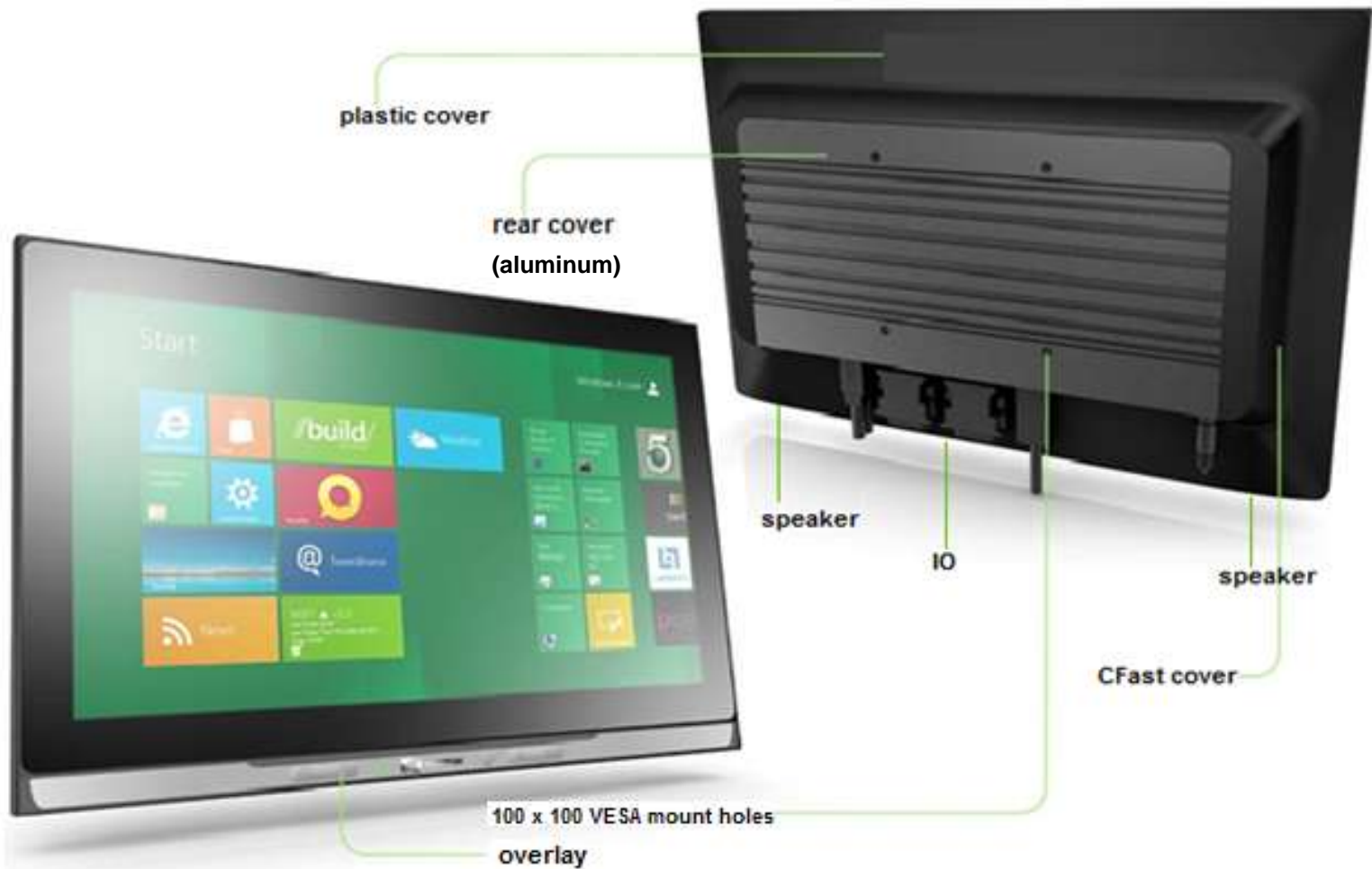


GOT5153W Specification

CPU	Intel® Celeron J1900 4 Cores @2.0GHz
Memory	1 x 204-pin DDR3L SO-DIMM max. up to 8GB
Display	15.6" TFT LCD w/LED backlight, WXGA (1366x768)
Touch	5-wire flat resistive touch or PCT
Storage	1 x 2.5" SATA HDD 1 x CFast or mSATA (-834)
I/O Ports	2 x RS-232/422/485 2 x Gigabit Ethernet 2 x USB 3.0, 2 x USB 2.0 1 x Switch for power on/off (ATX) 1 x VGA 1 x Line-out
Expansion	2 x mini card slot
Power input	AC w/adaptor or terminal block
Operating temp.	0°C~45°C



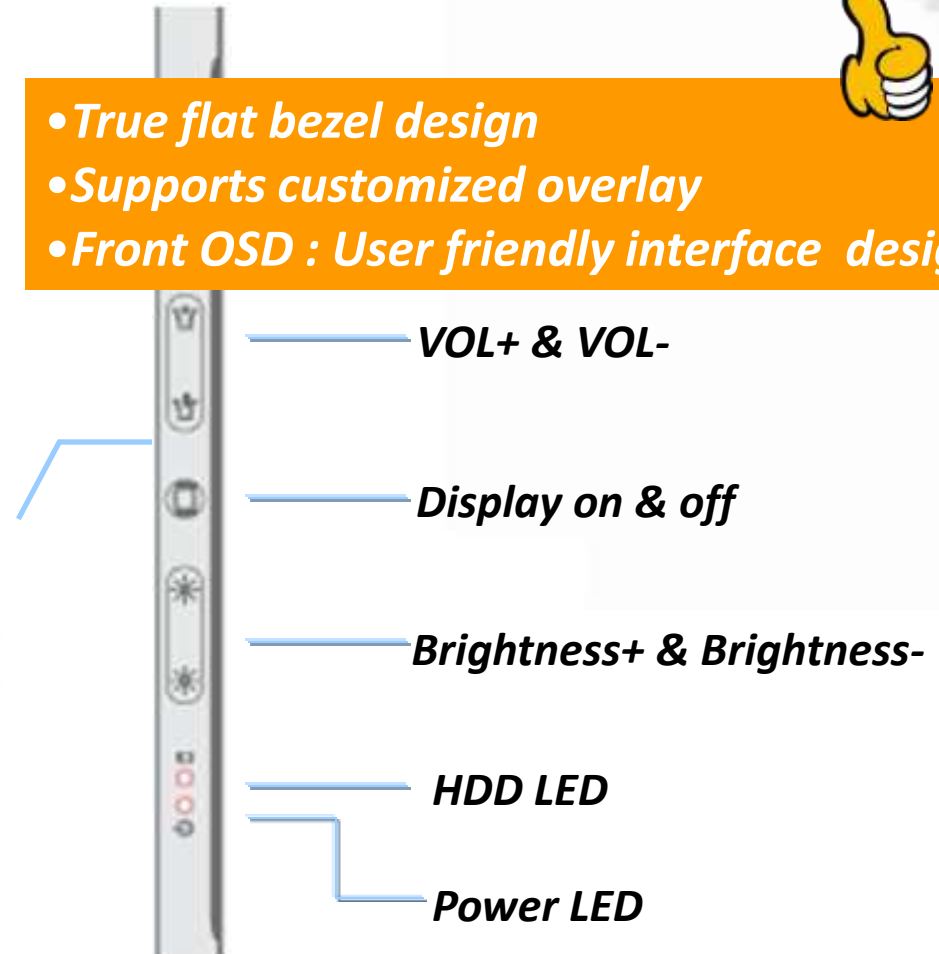
Appearance



Product Features



- *True flat bezel design*
- *Supports customized overlay*
- *Front OSD : User friendly interface design*



Product Features



Built-in Stereo Speakers

- 2 x 3W speaker
- IP65 waterproof rating



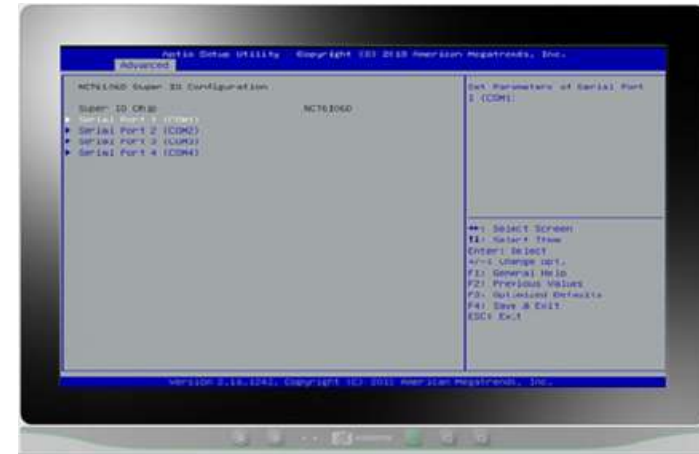
Product Features



Supports 2 mini card slots

*slot 1 : Supports Wi-Fi module or
3G module*

*slot 2 : Supports Wi-Fi module or
mSATA*



Supports 2 RS-232/422/485 ports

Supports serial ports by BIOS selectable

Product Features

Supports 2 USB 3.0 & 2 USB 2.0

	USB 2.0 	USB 3.0 
Backward Compatible	USB 1.1	USB 1.1 and USB 2.0
Maximum Transfer Rate	480Mbps	4.8Gbps
Bi-Directional Data Transfer	X	✓



10X 



Product Features



IPX1 design whole system

When users split (90 degree) water/drink/blood in GOT5153, IPX1 design can protect system from entering water.

Product Features



Net weight: 3.1 kgs
Gross weight: 5.2 kgs
Dimensions: 394.2(W) x
57(D) x 257.2(H) mm

Slim & Light Design

The GOT5153W-834 is a super slim touch panel computer for space-limited environment with its thickness and light weight, which makes it installed everywhere.

Product Features

Wall mount



VESA mount



Desktop Stand



GOT5000W Summary

1

True flat bezel design
Supports PCT or 5-wire resistive touch

2

Users friendly interface design: front OSD
Supports 5 membrane keys

3

Build-in internal antenna
Supports WLAN

GOT5000 Selection Guide

Features/ Models	GOT5000T-832	GOT5000T-834	GOT5153W-834
Mainboard	SBC87832 (Intel® NM10 chipset)	SBC87834	SBC87834
CPU	Intel® Atom™ Processor N2600 2 cores @1.6 GHz Intel® Atom™ Processor D2550 2 cores @1.6 GHz (GOT5152T only)	Intel® Celeron Processor J1900 4 cores@2.0GHz	Intel® Celeron Processor J1900 4 cores@2.0GHz
Memory	1x 204-pin DDR3-SODIMM, max. up to 2 GB (4GB for GOT5152T only)	1x 204-pin DDR3L-SODIMM, max. up to 8 GB	1x 204-pin DDR3L-SODIMM, max. up to 8 GB
Storage	1x 2.5" SATA HDD, 1x CF	1x 2.5" SATA HDD, 1 x CFAST or mSATA	1x 2.5" SATA HDD, 1 x CFAST or mSATA
Bottom side I/O	1x RS-232/422/485 (jumper setting) 1~2x RS-232	1~3x RS-232/422/485 (BIOS selectable)	2x RS-232/422/485 (BIOS selectable)
	2x Gigabit Ethernet (Realtek)	2x Gigabit Ethernet (i210IT)	2x Gigabit Ethernet (i210IT)
	2 or 4 x USB 2.0	2x USB 3.0 2x USB 2.0	2x USB 3.0 2x USB 2.0
	100~240V AC-DC power adapter 10~30VDC w/protection fuse	100~240V AC-DC power adapter 9~36VDC w/protection fuse	100~240V AC-DC power adapter 9~36VDC w/protection fuse
	1x Switch for power on/off (ATX)	1x Switch for power on/off (ATX)	1x Switch for power on/off (ATX)
Expansion	1x mini card slot (full size)	2x mini card slot (full size)	2x mini card slot (full size)
OS	XP, WES, Windows 7, WES 7, CE7	Windows 8.1, WE8S, Windows 7, WES 7	Windows 8.1, WE8S, Windows 7, WES 7

All-in-One Touch Panel Computers

Vertical Market

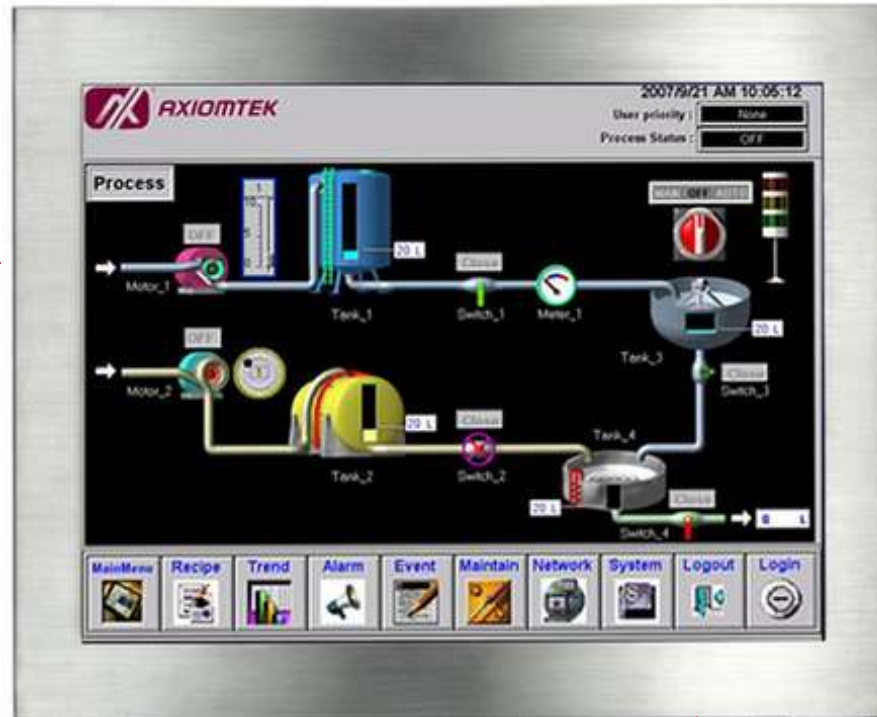
**Tough IP66
GOT800**

GOT800 Offerings (outdoor solution)



Sunlight
readable design:
high-brightness
and low
reflection T/S

Water/Dust –proof
design: Full IP66-rating
and I/O water-proof
connector



IEC60945 (compliant)
e13 (vehicle certification)

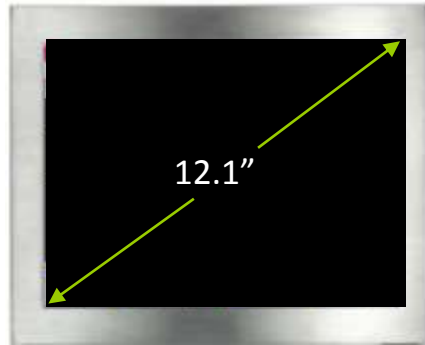
-20°C~+55°C



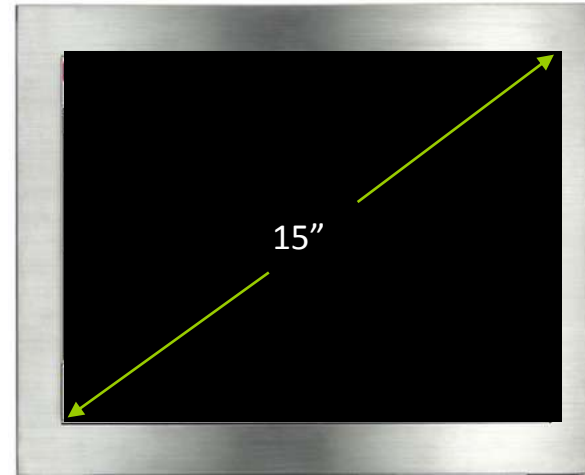
Wide
temperature

Stainless steel
SUS316
enclosure
with aluminum
back cover

GOT800 Overview



GOT812L/GOT812LR



GOT815

Intel® N270 (-830 for 12.1 & 15")
Intel® N2600 (-832 series for 12.1")
Intel® E3827 (-834 series for 12.1")

450nits

1000nits

800nits

SVGA
800x600

XGA
1024x768

GOT812L(R)-834 Specification

CPU Intel® Atom™ processor E3827 1.75 GHz

Memory 2 x 204-pin DDR3L SO-DIMM max. up to 8 GB

Display 12.1" XGA TFT LCD, 1000 nits (res 1024 x 768) GOT812LR
12.1" SVGA TFT LCD, 500 nits (res 800 x 60) GOT812L

Storage 1 x 2.5" SATA HDD, 1 x CFast

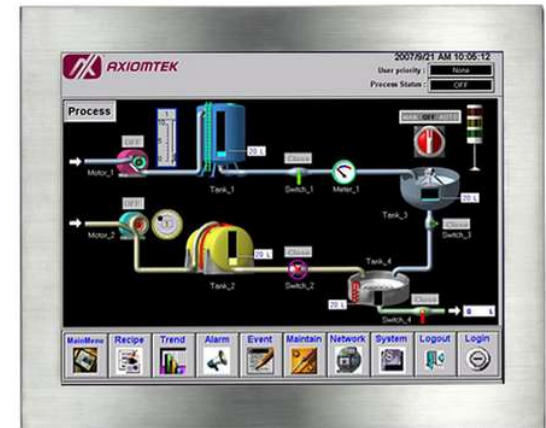
I/O Ports 2 x RS-232/422/485 (default RS-232)
2 x USB 2.0
1 x 10/100/1000Mbps Ethernet

Expansion 2 x PCIe Mini Card slot

Touch 2-wire resistive low reflective touch GOT812LR
5-wire resistive touch GOT812L

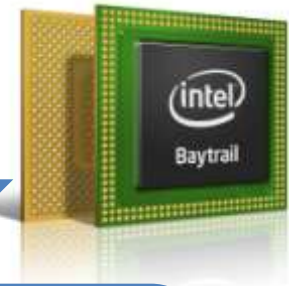
Power Power input 9~36VDC

Environment Operating temperature: -20°C ~ +55°C
2G, 5 ~ 500Hz, random for 2.5" SSD/CFast



Product Features

Key platform upgrade:



Intel® Atom
Processor
D2550 / N2600
(Cedar Trail)

- SoC Platform (2 chip to 1 chip)
- 22nm Processor Technology
- New: Quad Core CPU
- Intel® Gen 7 Graphics
- DX® 11
- USB 3.0
- DDR3L

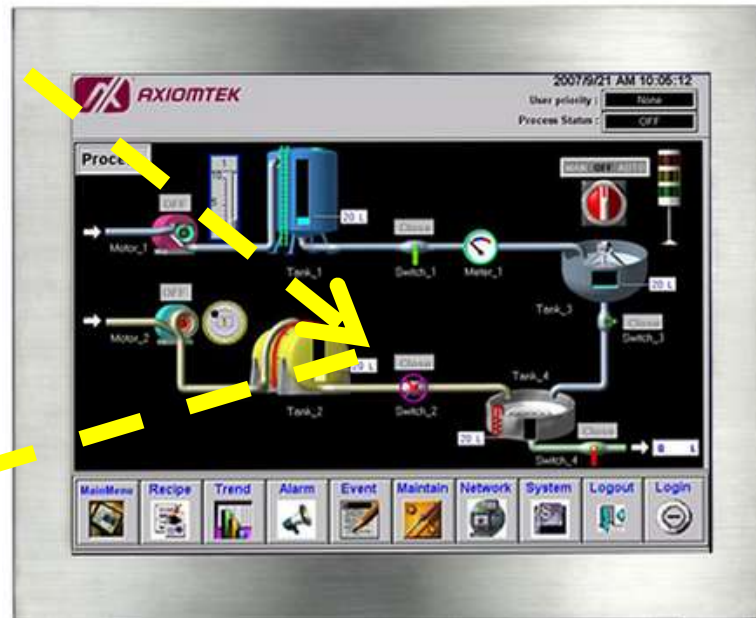
Intel® Atom
Processor
E3827 / J1900
(Bay Trail SoC)

2X Productivity Workload
3X Performance 3D

Product Features



Sunlight



Sunlight readable

High Brightness LCD
1000 nits

Low Reflection

Anti-Reflection
Touch

Reduced
reflection of light

Excellent visibility in daylight conditions

Product Features

Full stainless steel SUS316 enclosure



Advantages of SUS316

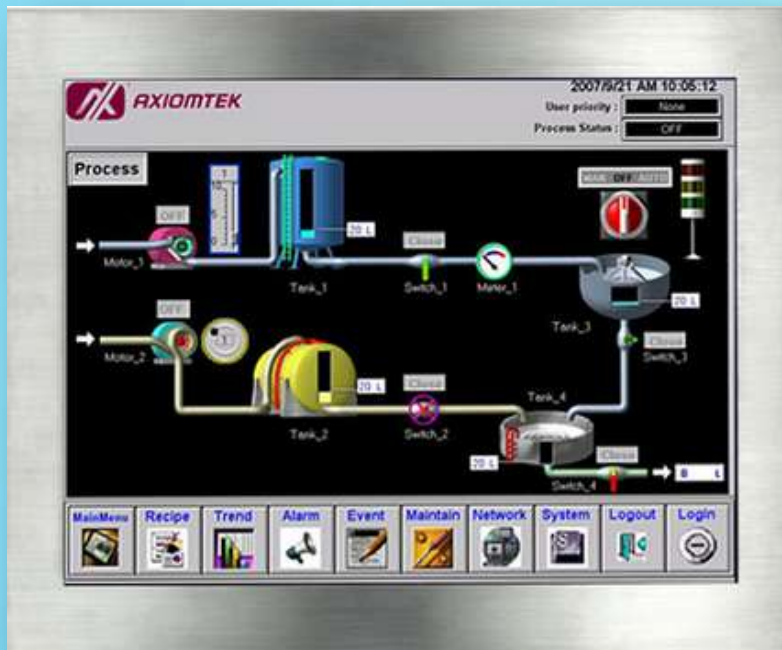
- Corrosion Resistance
- Heat Resistance
- Fabrication
- Hot/cold Working
- Machinability

Suitable for any harsh environments

Product Features

IP66 Fully-enclosed Design

IP	6	No ingress of dust; complete protection against contact (dust tight)
	6	Water projected in powerful jets (12.5 mm nozzle) against the enclosure from any direction shall have no harmful effects.



Product Features

Wide Temperature

-20°C



55°C



Designed for outdoor applications

Application - Agriculture

Suitable for the outdoor environment



GOT812



Why Axiomtek?

- Sunlight readable solution
- Full IP66 protection
- stainless steel enclosure

Application - HMI of Boiler



Why Axiomtek?

- Wide temperature
- Full stainless steel enclosure
- Cost effective

GOT815

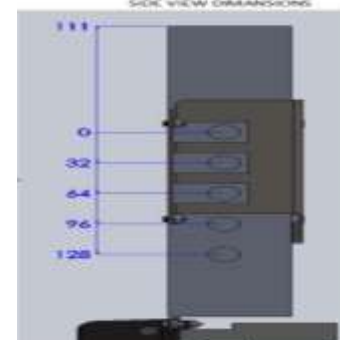
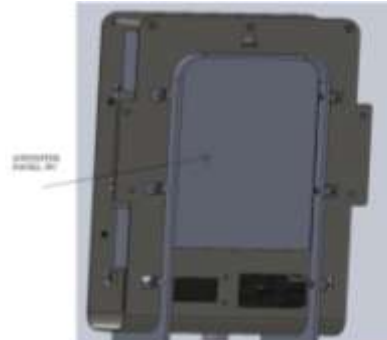
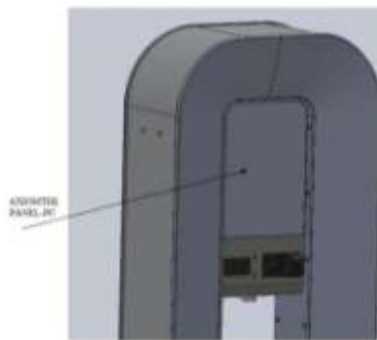
Application- Drinking Water Kiosk



Why Axiomtek?

- Customized mechanical design
- Full IP66 protection
- Sunlight readable solution

GOT812



GOT800 Offerings

**Flat design
PCT or resistive
touch**

**Stainless steel
Full SUS316
enclosure**

Coming Soon

**Water/Dust –proof
design: full IP66-
rating and I/O
water-proof
connector**

**Fanless with Intel® Bay Trail
Dual Core E3827 1.75 GHz**

GOT815(7)-834 Overview



GOT815



GOT817

Intel® E3827 (-834 series for 15" and 17")

420nits

350nits

SVGA
800 x 600

SXGA
1280 x 1024

GOT815(7)-834 Specification

CPU	Intel® Atom™ processor E3827 1.75 GHz
Memory	2 x 204-pin DDR3L SO-DIMM max. up to 8 GB
Display	15" XGA TFT LCD, 420 nits (res 1024 x 768) GOT815 17" SXGA TFT LCD, 350 nits (res 1280 x 1024) GOT817
Storage	1 x 2.5" SATA HDD, 1 x CFast
I/O Ports	2 x RS-232/422/485 (default RS-232) 2 x USB 2.0 1 x 10/100/1000Mbps Ethernet
Expansion	2 x PCIe Mini Card slot
Touch	Projected capacitive touch or flat resistive touch
Power	Power input 9~36VDC
Environment	Operating temperature: -20°C ~ +50°C 2G, 5 ~ 500Hz, random for 2.5" SSD/CFast



Product Features

Projected Capacitive touch

- Anti-scratch Surface for 6H hardness glass front surface
- Higher transparency
- 2 points multi touch
- Flexibility for hand and glove

Full Flat Bezel Design

- Seamless bezel design
- Prevent from dust and dirt
- More fashionable looks



Application Story - Food Industry



GOT815(7)-834

Why Axiomtek?

- Stainless steel enclosure
- Full IP66 / IP69K for high humidity environment
- flat bezel design with PCT or resistive touch

GOT800 Summary

1

Sunlight readable for outdoor application: high-brightness LCD and low reflection T/S

2

Full IP66 and M12 rugged connectors for dust and water protection

3

Stainless steel enclosure and wide temperature for harsh environment

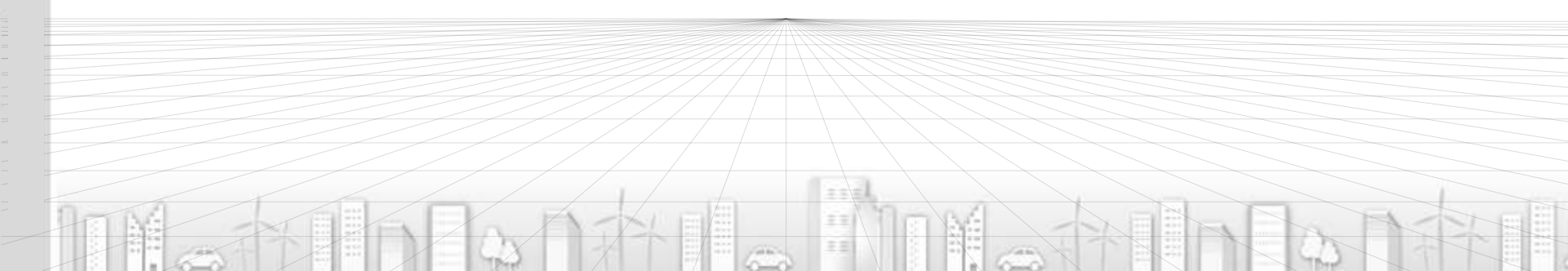
GOT800 Selection Guide

Features /Models	GOT812L(R)-832	GOT812L(R)-834	GOT815(7)-834
Mainboard	SBC87832	SBC87834	SBC87834
CPU	Intel® Atom™ processor N2600 1.6 GHz	Intel® Atom™ processor E3827 1.75 GHz	Intel® Atom™ processor E3827 1.75 GHz
Memory	1x 204-pin DDR3-SODIMM, max. up to 2 GB	2 x 204-pin DDR3L SO-DIMM max. up to 8 GB	2 x 204-pin DDR3L SO-DIMM max. up to 8 GB
Storage	1 x 2.5" SATA HDD, 1 x CFast	1 x 2.5" SATA HDD, 1 x CFast	1 x 2.5" SATA HDD, 1 x CFast
Bottom side I/O	2 x RS-232/422/485 (default RS-232) 2 2x USB 2.0 1 x 10/100/1000Mbps Ethernet	2 x RS-232/422/485 (default RS-232) 2 2x USB 2.0 1 x 10/100/1000Mbps Ethernet	2 x RS-232/422/485 (default RS-232) 2 4x USB 2.0 1 x 10/100/1000Mbps Ethernet
Expansion	2 x PCIe Mini Card slot	2 x PCIe Mini Card slot	2 x PCIe Mini Card slot
LCD	12.1" XGA TFT LCD, 1000 nits (res 1024 x 768) GOT812LR 12.1" SVGA TFT LCD, 500 nits (res 800 x 60) GOT812L	12.1" XGA TFT LCD, 1000 nits (res 1024 x 768) GOT812LR 12.1" SVGA TFT LCD, 500 nits (res 800 x 60) GOT812L	15" XGA TFT LCD, 420 nits (res 1024 x 768) GOT815 17" SXGA TFT LCD, 350 nits (res 1280 x 1024) GOT817
Touch	2-wire resistive AR touch GOT812LR 5-wire resistive touch GOT812L	2-wire resistive AR touch GOT812LR 5-wire resistive touch GOT812L	Projected capacitive touch or Flat resistive touch
Power	Power input 10~30VDC	Power input 9~36VDC	Power input 9~36VDC
Environment	Operating temperature: -20°C ~ +50°C Vibration: 2G, 5 ~ 500Hz, random for 2.5" SSD/CFast	Operating temperature: -20°C ~ +50°C Vibration: 2G, 5 ~ 500Hz, random for 2.5" SSD/CFast	Operating temperature: -20°C ~ +50°C Vibration: 2G, 5 ~ 500Hz, random for 2.5" SSD/CFast

All-in-One Touch Panel Computers

Vertical Market

Rolling Stock
GOT700



GOT700 Series Offerings

Fully Certified with
EN50155

Fully Certified with
EN50121-3-2



Alternative keypad
control in front bezel

Sunlight readable
solution with high
brightness (1000 nits)
LCD

Certificated with
EN50121-3-2
EMC test
standard &
EN50155

Fanless with Intel® Bay
Trail Dual core E3827
1.75 GHz

Temperature standard:
EN50155 T3 (-25°C ~ +70°C)

All ruggedized
lockable
connectors

GOT710(2)-837 Specification

Fully Certified with
EN50155

CPU Intel® Bay trail dual core processor E3827 1.75 GHz

Memory DDR3 4 GB (default) or 8 GB memory onboard

Display 10.4" SVGA TFT LCD, 1000 nits (res 800 x 600)
12.1" XGA TFT LCD ,1000 nits (res 1024 x 768)

Storage 16 GB flash onboard
1 x mSATA
1 x CFast™

I/O Ports 2 x RS-232/422/485 with iso. 1.5KV(M12,A-coded)
2 x RJ-45 for Giga LAN with iso. 1.5KV (M12, X-coded)
2 x USB 2.0 (M12, A-coded)
1 x DC for power input with iso.1.5KV (M12, A-coded)
1 x Audio: Line out, Line in, speaker out (D-sub)
1 x DIO (6 input/2 output) with iso. 1.5KV (D-sub)
1 x CAN bus with iso. 1.5KV (D-sub)

Expansion 2 x PCIe Mini Card slot

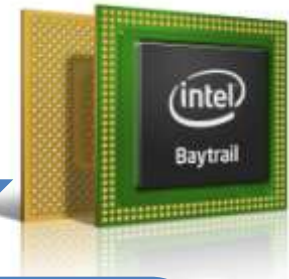
Power 14.4V to 40V DC
Other voltages on request 10ms hold up time (S2)

PR Sample ready
GOT710-837:Q2'15
GOT712-837:Q4'15



Product Features

Key platform upgrade:



Intel® Atom®
Processor
D2550 / N2600
(Cedar Trail)

- SoC Platform (2 chip to 1 chip)
- 22nm Processor Technology
- New: Quad Core CPU
- Intel® Gen 7 Graphics
- DX® 11
- USB 3.0
- DDR3L

Intel® Atom®
Processor
E3827 / J1900
(Bay Trail SoC)

2X Productivity Workload
3X Performance 3D

Product Features

EN50155 Certificated Standard

Temperature

- Operating Temperature: -25°C~70°C (85°C for 10 mins max, T3 Level)

EMC Test

- EN50121-3-2
- EN50121-4

Shock & Vibration

- Shock: EN61373
- Vibration (op): 5 to 150 Hz 10 mins / axis (0.1 g)
- Vibration (non op): 5 to 150 Hz 5 hours / axis (0.5 g)

Performance Test

- Variations of voltage
- Supply change over
- Supply change voltages
- Supply interruption of voltage supply

Product Features



Sunlight readable

- High Brightness: 1000 nits
- Wide Viewing Angle: 80/80

Auto-dimming

- Power consumption saving
- Comfortable viewing brightness
- Extend Product life cycle

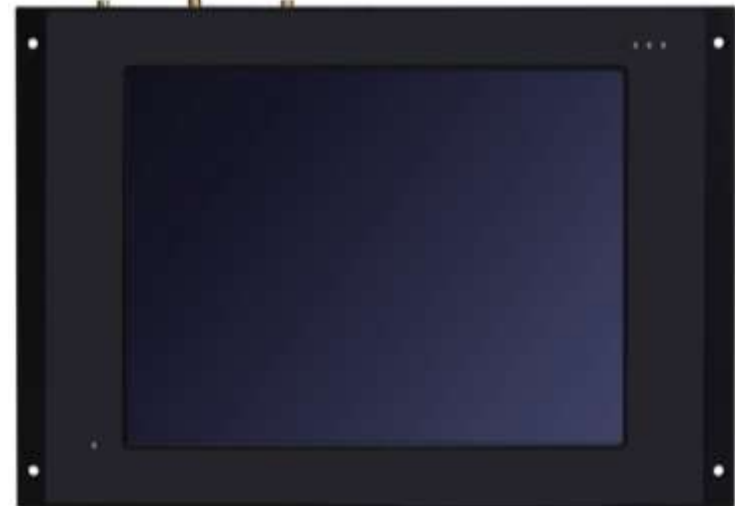
Automatically adjust the optimal brightness to fit the environment

Product Features

Keypad without touch

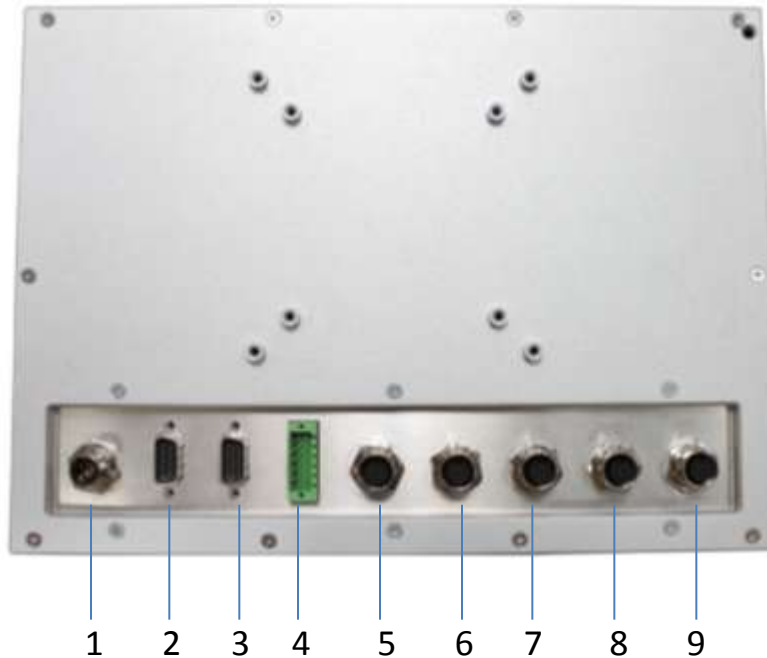


Touch without keypad



Alternative keypad control in front bezel, controlling the functions of the train.

Product Features

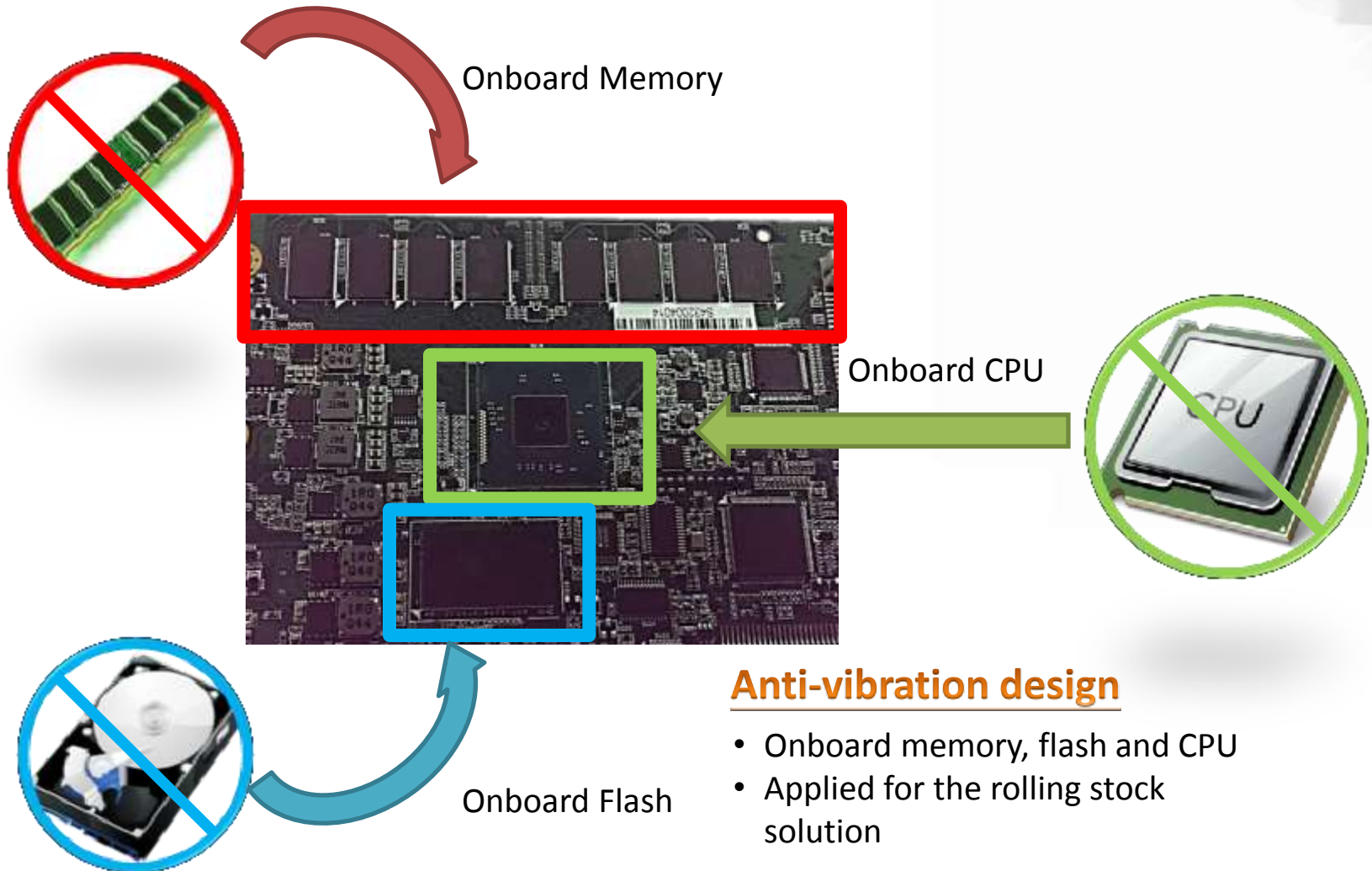


Anti-Vibration Design

- All lockable connectors
- Isolated design for protection

1. DC for power input with isolated 1.5KV
2. CAN Bus with isolated 1.5KV
3. Audio (Line out, Line in, speaker out)
4. DIO (6 input/2 output with isolated 1.5KV)
5. USB 2.0 x 2
6. COM 2 (RS-232/422/485 with isolated 1.5KV)
7. COM 1 (RS-232/422/485 with isolated 1.5KV)
8. LAN 2 (Giga Ethernet with isolated 1.5KV)
9. LAN 1 (Giga Ethernet with isolated 1.5KV)

Product Features



Anti-vibration design

- Onboard memory, flash and CPU
- Applied for the rolling stock solution

Application - Train Driver Room



Why Axiomtek?

- EN50155 certificated
- Fanless Intel® Bay Trail solution
- Cost effective



GOT700 Summary

1

Alternative keypad control in front bezel

2

Temperature standard: EN50155 T3 (-25°C ~ +70°C)

3

Certificated with EN50121-3-2 EMC test standard & EN50155

All-in-One Touch Panel Computers

Vertical Market

Ind. TPC
P1000

P1000 Offerings

Support high performance Intel® Core™ family CPU

Expandable to fulfill customers' requirements

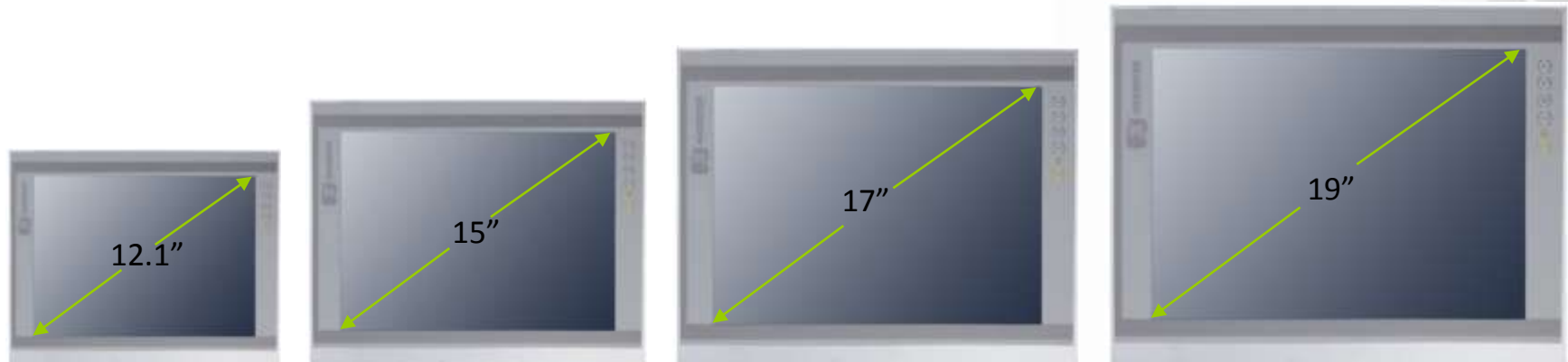


Easy installation: a less screw design for user's convenience.

On-screen display design can set your environment quickly

Front bezel IP65 design

P1000 Overview



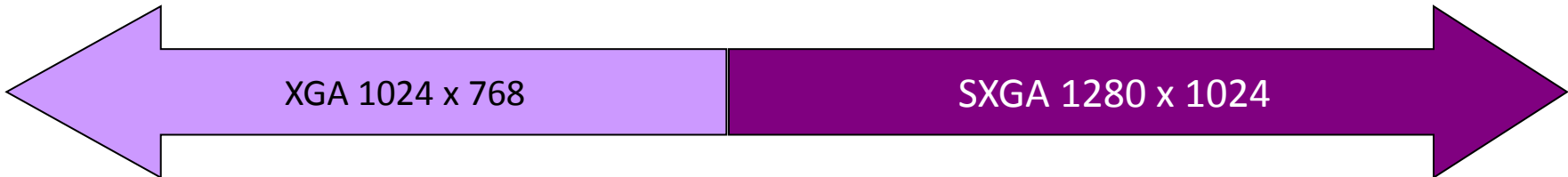
P1127E

P1157S/P1157E

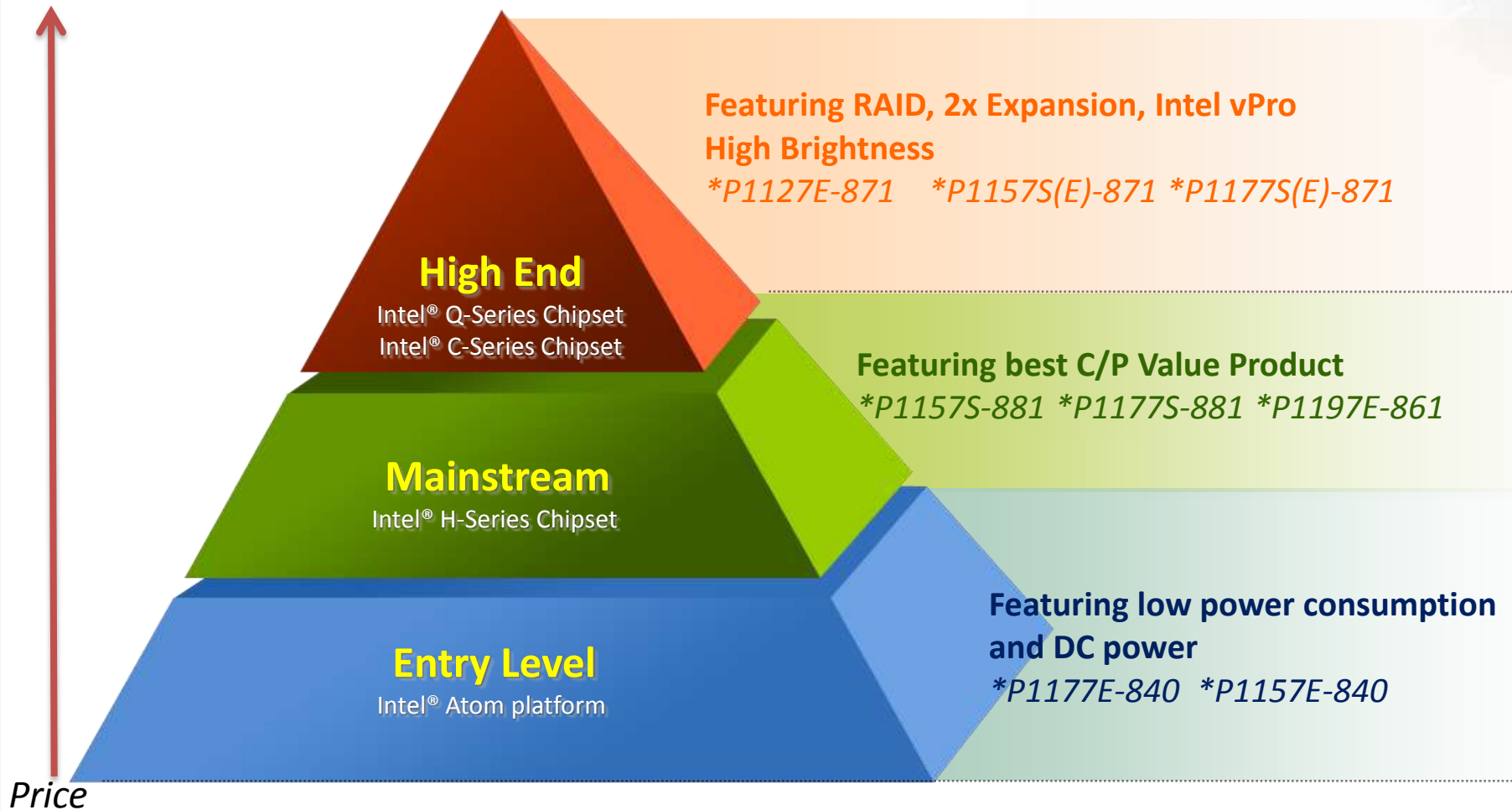
P1177S/P1177E

P1197E

Intel® C216 PCH	Intel® Q77 PCH Intel® C216 PCH Intel® H81 PCH		Intel® Q77 PCH Intel® C216 PCH Intel® H81 PCH		Intel® H61 PCH
500nits	350nits	250nits	350nits	250nits	350nits
Expandable	Expandable	Slim	Expandable	Slim	Expandable



P1000 Product Segment



P11X7S(E)-871 Specification

CPU	Supports 2nd & 3rd gen Intel® Core™ family, Pentium, Celeron & Xeon series processors in LGA1155 socket
Chipset	Intel® C216 Chipset P1127E/P1157E/P1177E Intel® Q77 Chipset P1157S/P1177S
Memory	2 x 204-pin DDR3 SO-DIMM max. up to 16 GB
Display	12.1" XGA TFT LCD, 500 nits (res 1024 x 768) P1127E 15" XGA TFT LCD, 350nits(res 1024 x 768) P1157S/P1157E 17" SXGA TFT, 350nits(res 1280 x 1024) P1177S/P1177E
Storage	1 x 2.5" SATA HDD P1127E 2 x 2.5" or 1 x 3.5" SATA HDD P1157/P1177
I/O Ports	1x RS-232/422/485 with 5V & 12V 1x RS-232 with 5V & 12V, 1x RS-232 2x RJ-45 for Giga Ethernet 4x USB 3.0, 2x USB 2.0 1x AC plug, 1x Switch for power on/off (ATX) 1x DVI-I, 1x HDMI, 1x Mic-in, 1xLine-out
Expansion	2x PCIe x8 or 2x PCI 1x WIFI Module (optional)



Slim Type



Expansion Type

P11X7S(E)-881/861 Specification

CPU	Supports 3rd gen Intel® Core™ family, Pentium, Celeron Series processors in LGA1155 socket P1197E-861 Supports 4th gen Intel® Core™ family, Pentium, Celeron Series processors in LGA1150 socket P115(7)7S-881
Chipset	Intel® H61 Chipset P1197E-861 Intel® H81 Chipset P115(7)7S-881
Memory	2 x 204-pin DDR3 SO-DIMM max. up to 16 GB
Display	15" XGA TFT LCD, 250nits(res 1024 x 768) P1157S-881 17" SXGA TFT, 250nits(res 1280 x 1024) P1177S-881 19" SXGA TFT, 250nits(res 1280 x 1024) P1197E-861
Storage	2 x 2.5"(P1197E) / 1 x 3.5" or 2 x 2.5" (P11X7S)SATA HDD
I/O Ports	1x RS-232/422/485 (P1197E), 3xRS-232/422/485(P11X7S-881) 3x RS-232 (P1197E-861), 1x RS-232(P11X7S-881) 2x RJ-45 for Giga Ethernet 6x USB 2.0(P1197E-861), 2x USB3.0 & 4x USB2.0(P11X7S-881) 1x AC plug, 1x Switch for power on/off (ATX) 1x DVI, 1x VGA(P1197E-861), 1x VGA, 1xHDMI(P11X7-881) 1x Mic-in, 1xLine-out
Expansion	1x PCIe x4 or 1x PCI P1197E-861 1x WIFI Module (optional)

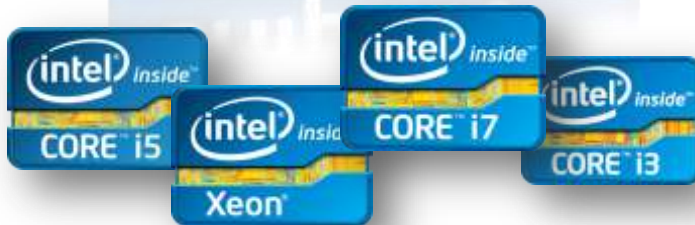


P115(7)7-881 IO



P1197E-861 IO

Powered by Intel® Core CPU



Intel® C216/Q77/H81/H61 Express chipset

- Supports Intel® Core™ family, Pentium, Celeron series processors in LGA1155 socket (*Ivy Bridge, Sandy Bridge and Haswell CPU*)
- Supports Intel® Xeon family *workstation processors (C216).*
- Provides the best computing experiences and integrated graphics

Product Features



Without any external power adaptor!

Built-in
AC power supply



2.5" & 3.5" HDD Drive with anti-vibration protection

All new anti-shock design enhances protection performance of hard drives dramatically in terms of shock and vibration tests.

Product Features

SSD Performance with HDD Price

Intel® Smart Response solution = SSD-like system performance with HDD capacity.

SSD Like Performance + Large HDD Capacity at Lower Cost



The diagram shows a 300GB SSD on the left with a price tag of ~\$550. To its right is an equals sign. On the right side of the equals sign, a 20GB SLC SSD and a 500GB HDD are shown together with a plus sign and a price tag of ~\$110 + \$40 = \$150. The entire right side is enclosed in a green box.

Desktop: Up to 50% over 7200 HDD-only



The bar chart shows benchmark improvement for three configurations: 3.5" HDD 7200 (blue bar, value 1.00), X25M-80 SSD (grey bar, value ~1.55), and HDD+SRT Cache (green bar, value ~1.55). The y-axis ranges from 0.00 to 1.80.

Money Saving!

Time Saving!

High Performance, High Capacity and Lower Cost!

Product Features

Intel® vPro™ Technology

Built-in features help lower total cost of ownership



Intel® vPro™ technology provides groundbreaking capabilities through Intel® Active Management Technology, Intel® Virtualization Technology and Intel® Trusted Execution Technology .

Prevent attacks below the operating system



The technology protects against difficult-to-detect, penetrating rootkits and malware that threaten users working in cloud or virtual environments by employing Intel® Trusted Execution Technology and Intel® Virtualization Technology.

Strengthen authentication and protect passwords



Intel® Identity Protection Technology (Intel® IPT),⁶ which provides several critical built-in defenses

Protect confidential business, employee, and customer information



Intel® Anti-Theft Technology allows IT to remotely lock down the computer, protecting both the user's identity and corporate data.

Respond to security breaches with speed and agility



Embedded in hardware, Intel vPro technology capabilities are accessed and administered separately from the hard drive, OS, and software applications—in a pre-boot environment.



Product Features

Supporting Smart Fan function

- ✿ Automatically adjusting fan speed depending on your system's loading and temperature.
- ✿ Increase the life cycle of fan
- ✿ Avoid the continuous noise to provide the quiet environment



Product Features



Superior Performance with Longer Range and Faster Speed

- ✿ Compliance with **IEEE 802.11 b/g/n 1T1R** wide bandwidth wireless communication
- ✿ Wireless connection up to **150Mbps**
- ✿ Features advanced **WEP encryption, WPA, and WPA2** to help protect data over wireless communication without sacrificing the performance.



Router

Transmitter: the number T is absolutely relative with speed.

Receive: the number R is relative with receiving dead angle and distance.

Product Features



HDMI Port delivers high quality image on a second display

HDMI delivers **high quality image** on a second display suitable for **large screen application** such as digital signage

Product Features



**IP65
Front Bezel**

*Robust aluminum
front bezel &
SECC rear cover*

Protecting the system from
dust, water and scratch



IP	6	Object size protected against Dust tight: No ingress of dust; complete protection against contact
	5	Liquid ingress protection: Water projected by a nozzle (6.3 mm) against enclosure from any direction shall have no harmful effects.

Product Features

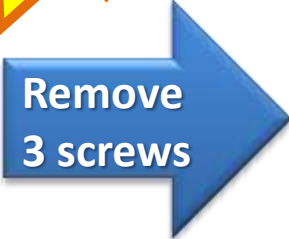


*Screwless design
for easy installation*

**82.36% Time Saving
6X Work Efficiency**



P1127E-871



Product Features

P1178-841



450mm (W) x 86.6mm (D) x 369.85mm (H)

8.25%
slimmer Design

P1177S-871



410mm (W) x 80mm (D) x 338 mm(H)

**Slim & Light Design with the best
computing experiences**

Product Features



Built-in stereo speakers

OSD(on-screen display) Supported



- VOL+
- VOL-
- Brightness+
- Brightness-
- LCD ON/OFF



Quick keys

Brightness + & Brightness-Combo



Quick keys

VOL+ & VOL- Combo

Quick to adjust your environment via OSD

Product Features



P1000 Summary

1

Supports high performance Intel® Core™ family CPU

2

Easy installation: a less screw design for user's convenience

3

Expandable to fulfill customers' requirements

P11X7S(E)-871 Selection Guide (part i)

Features/ Models	P1127E-871	P1157S-871 P1157E-871	P1177S-871 P1177E-871
Mainboard	MANO871 (Intel® C216 PCH)	MANO871 (Intel® C216/Q77 PCH)	MANO871 (Intel® C216/Q77 PCH)
CPU	LGA1155 socket Intel® 2nd & 3rd Generation Core i7/i5/i3/Celeron/Xeon processors (Ivy Bridge & Sandy Bridge CPU)	LGA1155 socket Intel® 2nd & 3rd Generation Core i7/i5/i3/Celeron/Xeon (opt) processors (Ivy Bridge & Sandy Bridge CPU)	LGA1155 socket Intel® 2nd & 3rd Generation Core i7/i5/i3/Celeron/Xeon (opt) processors (Ivy Bridge & Sandy Bridge CPU)
Memory	2x 204-pin DDR3-SODIMM, max. up to 16 GB	2x 204-pin DDR3-SODIMM, max. up to 16 GB	2x 204-pin DDR3-SODIMM, max. up to 16 GB
Storage	1x 2.5" SATA HDD	1x 3.5" or 1x 2.5" or 2x 2.5" SATA HDD	1x 3.5" or 1x 2.5" or 2x 2.5" SATA HDD
Bottom side I/O	2x RS-232/422/485 with 5V & 12V 1x RS-232	2x RS-232/422/485 with 5V & 12V 2x RS-232	2x RS-232/422/485 with 5V & 12V 2x RS-232
	2x RJ45 for Giga Ethernet	2x RJ45 for Giga Ethernet	2x RJ45 for Giga Ethernet
	4x USB 3.0 2x USB 2.0	4x USB 3.0 2x USB 2.0	4x USB 3.0 2x USB 2.0
	1x AC plug	1x AC plug	1x AC plug
	1x Switch for power on/off (ATX)	1x Switch for power on/off (ATX)	1x Switch for power on/off (ATX)
	1x DVI-I, 1x HDMI	1x DVI-I, 1x HDMI	1x DVI-I, 1x HDMI
	1x Mic-in, 1xLine-out	1x Mic-in, 1xLine-out	1x Mic-in, 1xLine-out
Internal speakers	2x 2W speakers	2x 2W speakers	2x 2W speakers

P11X7S(E)-871 Selection Guide (part ii)

Features/ Models	P1127E-871	P1157S-871 P1157E-871	P1177S-871 P1157E-871
Expansion	2x PCIe x8 or 2x PCI slots	P1157S-871: N/A P1157E-871: 2x PCIe x8 or 2x PCI slots	P1177S-871: N/A P1177E-871: 2x PClex 8 or 2x PCI slots
	1x external WiFi Antenna(opt) 1x WIFI Module 802.11 b/g/n (opt)	1x external WiFi Antenna(opt) 1x WIFI Module 802.11 b/g/n (opt)	1x external WiFi Antenna(opt) 1x WIFI Module 802.11 b/g/n (opt)
Optical Device	N/A	P1157S-871: N/A P1157E-871: 1 x DVD-Super Multi	P1177S-871: N/A P1177E-871: 1 x DVD-Super Multi
Display	12.1" TFT XGA,500 nits Max. Resolution: 1024 x 768	15" XGA TFT XGA, 350 nits Max. Resolution: 1024 x 768	17" SXGA TFT XGA, 380 nits Max. Resolution: 1280 x 1024
Touchscreen	5-wire resistive type	5-wire resistive type	5-wire resistive type
Power Supply	100~240VAC power supply	100~240VAC power supply	100~240VAC power supply
Environmental Specification	Operating temperature : 0°C to 45°C	Operating temperature : 0°C to 45°C	Operating temperature : 0°C to 45°C
	Vibration : 1G / 10 ~ 500Hz / operation	Vibration : 1G / 10 ~ 500Hz / operation	Vibration : 1G / 10 ~ 500Hz / operation
	Drop: follow DVT	Drop: follow DVT	Drop: follow DVT
	EMI: CE class A	EMI: CE class A	EMI: CE class A
	Waterproof / Dustproof: IP65 front bezel	Waterproof / Dustproof: IP65 front bezel	Waterproof / Dustproof: IP65 front bezel

P11X7S(E)-881/861 Selection Guide (part i)

Features/ Models	P1157S-881 P1177S-881	P1197E-861
Mainboard	MANO881 (Intel® H81 PCH)	MANO861 (Intel® H61 PCH)
CPU	LGA1150 socket Intel® 4th Generation Core i7/i5/i3/Celeron /Pentium processors (Haswell CPU)	LGA1155 socket Intel® 2nd & 3rd Generation Core i7/i5/i3/Celeron/Pentium processors (Ivy Bridge & Sandy Bridge CPU)
Memory	2x 204-pin DDR3-SODIMM, max. up to 16 GB	2x 204-pin DDR3-SODIMM, max. up to 16 GB
Storage	1x 3.5" or 2x 2.5" SATA HDD	2x 2.5" SATA HDD
Bottom side I/O	3 x RS-232/422/485 with 5V & 12V 1 x RS-232 with 5V & 12V	2 x RS-232 1 x RS-232/422/485 1 x RS-232 with 5V & 12V
	2x RJ45 for Giga Ethernet	2x RJ45 for Giga Ethernet
	4x USB 3.0 2x USB 2.0	4x USB 2.0 (back) 2x USB 2.0 (front)
	1x AC plug	1x AC plug
	1x Switch for power on/off (ATX)	1x Switch for power on/off (ATX)
	1x VGA, 1x HDMI	1x DVI-D, 1x VGA
	1x Mic-in, 1xLine-out	1x Mic-in, 1xLine-out
Internal speakers	2x 2W speakers	2x 2W speakers

P11X7S(E)-881/861 Selection Guide (part ii)

Features/Models	P1157S-881 P1177S-881	P1197E-861
Expansion	NA	1 x PCIe x4 or 1x PCI
	1x external WiFi Antenna(opt) 1x WIFI Module 802.11 b/g/n (opt)	1x external WiFi Antenna(opt) 1x WIFI Module 802.11 b/g/n (opt)
Optical Device	N/A	1 x DVD-Super Multi (opt)
Display	P1157S-881: 15" TFT XGA,250 nits P1177S-881: 17" TFT SXGA, 250nits	19" TFT SXGA, 350nits
Touchscreen	5-wire resistive type	5-wire resistive type
Power Supply	100~240VAC power supply	100~240VAC power supply
Environmental Specification	Operating temperature : 0°C to 45°C	Operating temperature : 0°C to 45°C
	Vibration : 1G / 10 ~ 500Hz / operation	Vibration : 1G / 10 ~ 500Hz / operation
	Drop: follow DVT	Drop: follow DVT
	EMI: CE class A	EMI: CE class A
	Waterproof / Dustproof: IP65 front bezel	Waterproof / Dustproof: IP65 front bezel

All-in-One Touch Panel Computers

Industrial Monitor

Ind. Monitor
PANEL6000



P61x1 Offerings



5 wire Resistive Touch or glass
IP65 front bezel design

5key OSD control & LED indicator

Customizable Overlay
(Neutral or customer's brand)

Supports multi mounting ways

Modular box design

AD Board w/ digital video input



P61x7 Offerings

Elegant flat design

PCAP multi-touch w/
7H Hardness

Aluminum
front bezel w/
IP65 protection



Supports multi
mounting way

Modular box design
w/ combo video
inputs

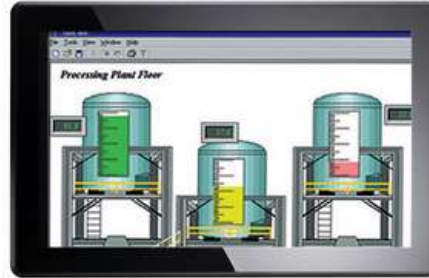
5key OSD control function



P6000 Overview



P6100,P6122,P6153,P6173,P6193



P6157W,P6187W



P6171,P6151(planning)

5W Res. Touch or glass

PCAP multi touch or glass

5W Res. Touch or glass

Combo Video Signal:
VGA 、 DVI 、 CVBS 、 S-Video

Digital Video Signal:
HDMI 、 DP 、 DVI

Screw type AC-in or 12V / 24V DC-in

Panel / Wall
VESA / Rack

Panel / Wall / VESA

Panel / Wall
VESA / Rack

P61x7 Specification

LCD Panel 15.6" WXGA 300 nits, LED Backlight
18.5" WXGA 300 nits, LED Backlight

Display Control OSD(on-screen display) on rear side

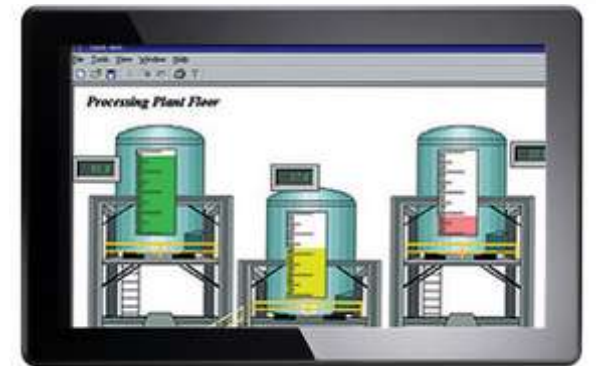
IP Grade IP65 front bezel

Touchscreen Pcap multi-touch or glass

Power Screw-type AC-in or 12V or 24V DC-in

I/O Ports 1 x USB for touchscreen version
1 x VGA
1 x DVI-D
1 x S-Video
1 x CVBS
1 x Power input

Mounting Panel Mount
VESA Mount
Wall Mount



P61x1 Specification

LCD Panel	17" SXGA 350 nits, LED Backlight 15" XGA 400 nits, LED Backlight
Display Control	OSD(on-screen display) on front panel
IP Grade	IP65 front bezel
Touchscreen	Resistive touch or glass
Power	Screw-type AC-in or 12V or 24V DC-in
I/O Ports	1 x RS-232 or USB for touchscreen version 1 x HDMI 1x DVI-D 1x DisplayPort 1x Power input
Mounting	Panel Mount VESA Mount Rack Mount Wall Mount

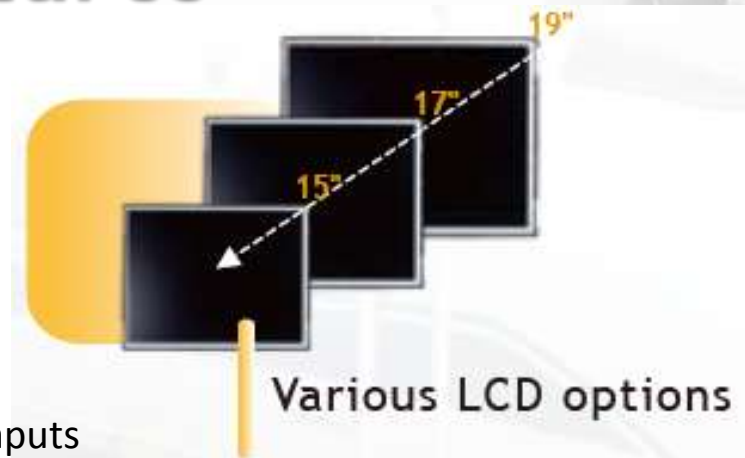


Product Features

Modular Design

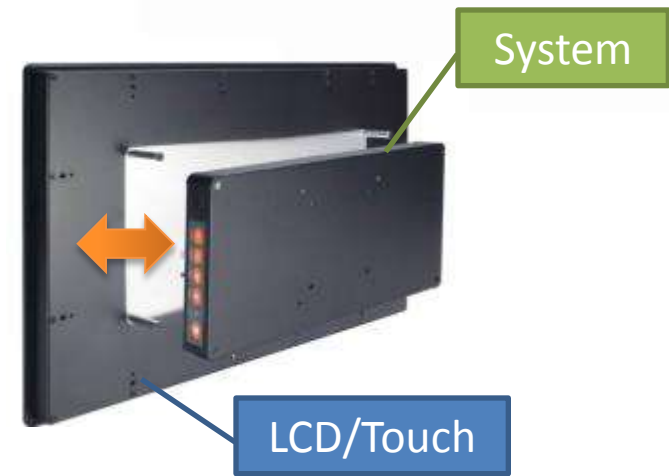
■ Flexible for different combination

- Various LCD: 10.4" ~ 19"
- Diverse AD Board: Digital or Combo video signal inputs
- Different touch: PCT, Resistive Touch
- AC or 12V/24Vdc power input

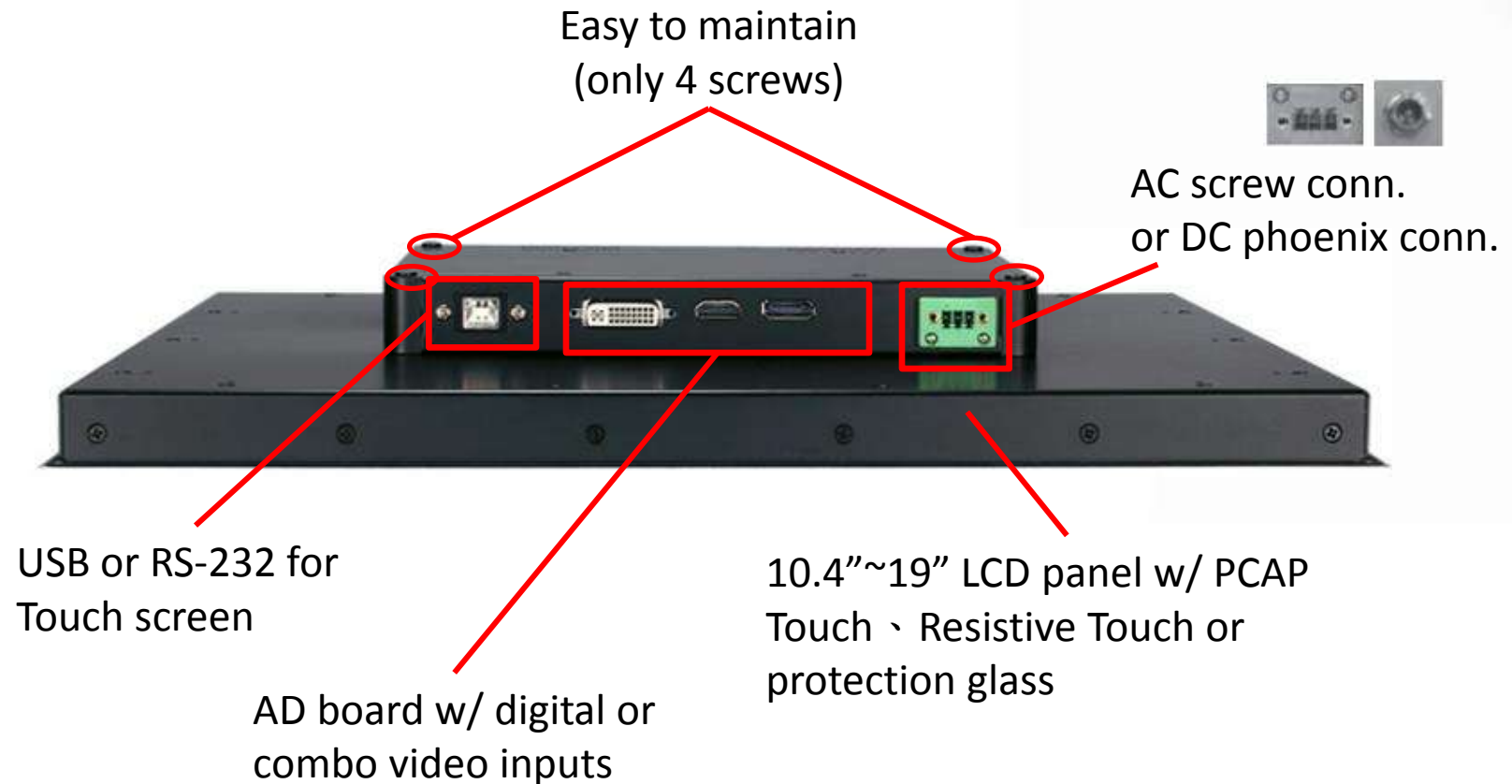


■ Easy to maintain – 4 screws only

■ Time to market

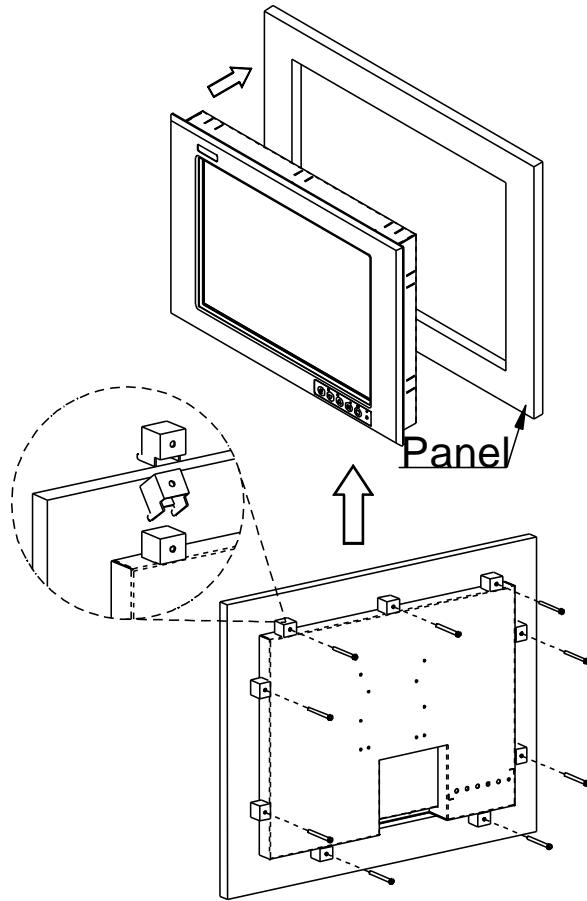


Product Features

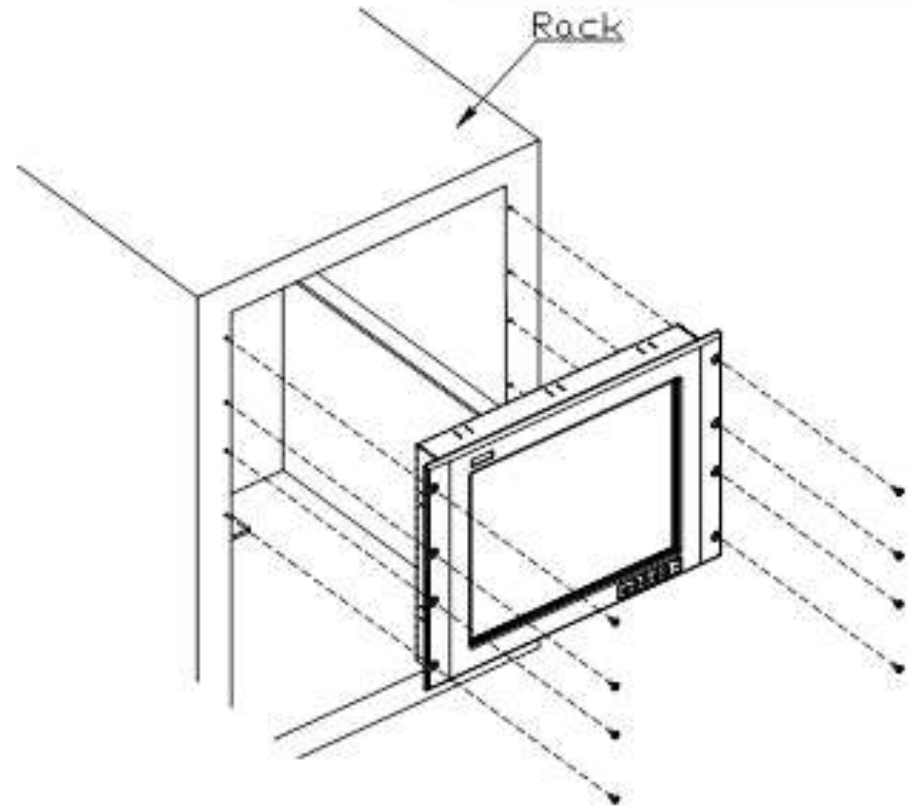


Product Features

Panel Mount

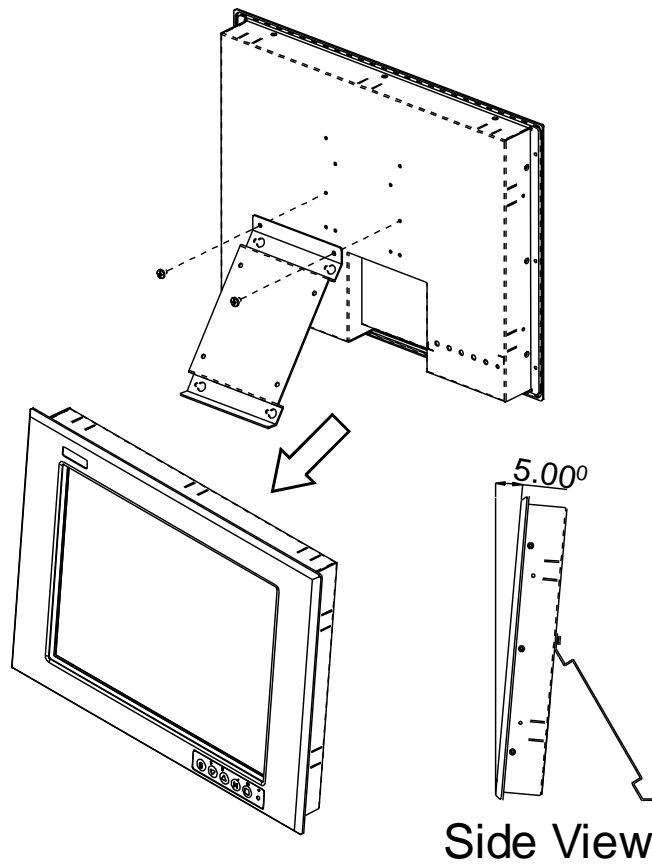


Rack Mount

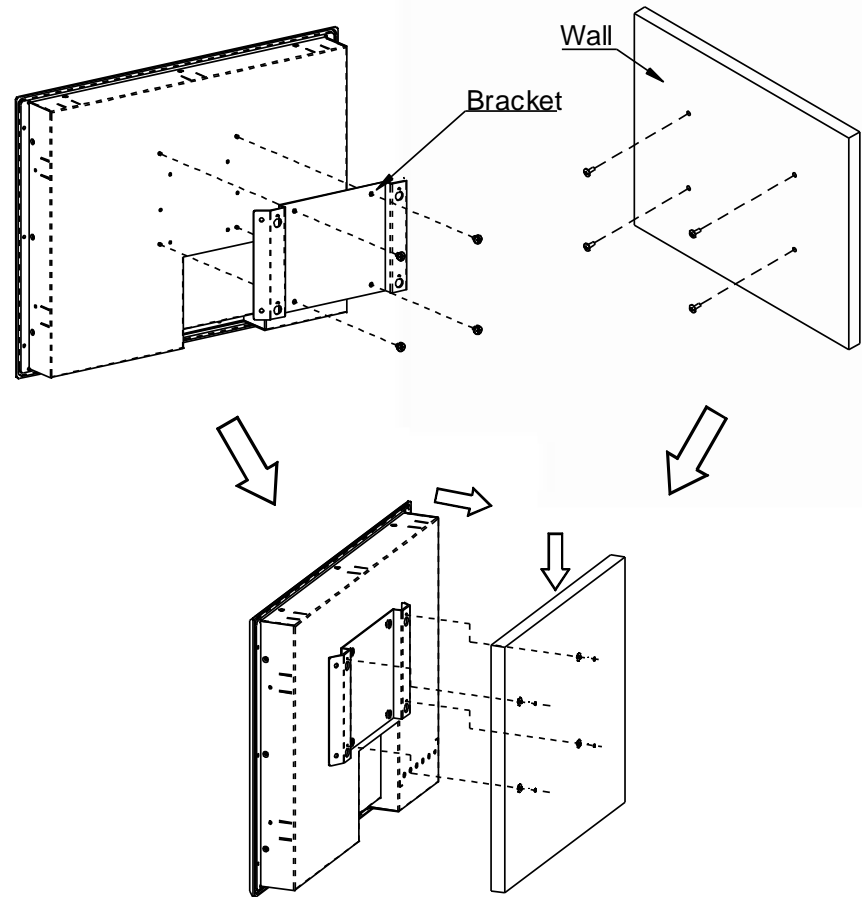


Product Features

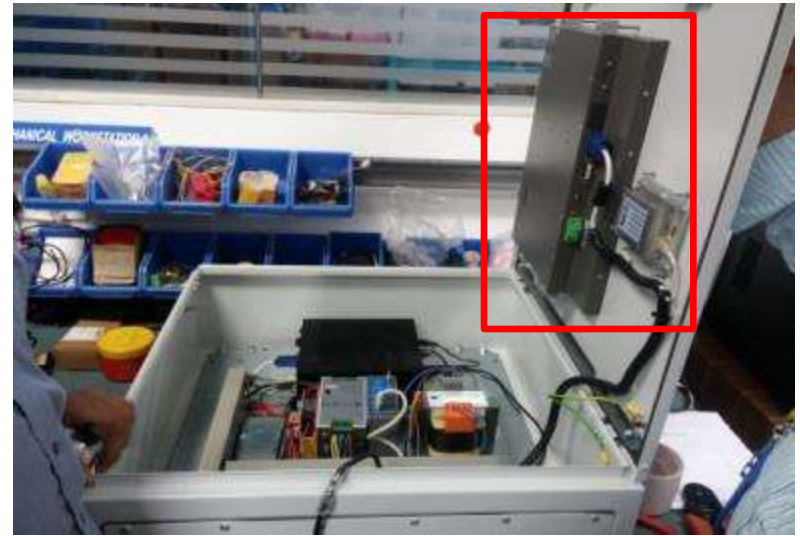
Desktop Stand (optional)



Wall Mount (optional)



Application - HMI of Boiler



P6153

Why Axiomtek?

- IP65 front Aluminum bezel design w/ touch screen or protection glass
- Industrial grade long life time
- Supports multi-mounting ways for system integration

Application - Interactive Kiosk



P6153

Why Axiomtek?

- IP65 front Aluminum bezel design w/ touch screen or protection glass
- Supports multi video signal inputs
- Supports 24Vdc power input

P6000 Summary

1

10.4" ~19" full product lines for different applications

2

Flexible & easy maintain modular box design for system integration

3

Supports multi mounting way: panel mount / wall mount / VESA mount / Rack mount

P6000 Selection Guide (part i)

Features /Models	P6192	P6187W	P6173
LCD panel	19" SXGA, LED backlight	18.5" WXGA, LED backlight	17" SXGA, LED backlight
Touch screen	5 wire resistive touch USB or RS232	Pcap multi-touch w/ USB	5 wire resistive touch USB or RS232
AD Board	AX98305 (Combo video input)	AX98305 (Combo video input)	AX98305 (Combo video input)
Video input	1 x VGA 1 x DVI-D 1 x S-Video (optional) 1 x CVBS (optional)	1 x VGA 1 x DVI-D 1 x S-Video (optional) 1 x CVBS (optional)	1 x VGA 1 x DVI-D 1 x S-Video (optional) 1 x CVBS (optional)
Power	Screw type AC-in 12V or 24V DC-in	Screw type AC-in 12V or 24V DC-in	Screw type AC-in 12V or 24V DC-in
Mounting	Panel mount VESA mount Rack mount (optional) Wall mount (optional)	Panel mount VESA mount Wall mount (optional)	Panel mount VESA mount Rack mount (optional) Wall mount (optional)
Modular Design	N/A	Yes	N/A
Front Bezel	IP65 w/ touch screen or glass	IP65 w/ touch screen or glass	IP65 w/ touch screen or glass

P6000 Selection Guide (part ii)

Features /Models	P6171	P6157W	P6153
LCD panel	17" SXGA, LED backlight	15.6" WXGA, LED backlight	15" XGA, LED backlight
Touch screen	5 wire resistive touch USB or RS232	Pcap multi-touch w/ USB	5 wire resistive touch USB or RS232
AD Board	AX98309 (Digital video input)	AX98305 (Combo video input)	AX98305 (Combo video input)
Video input	1 x HDMI 1 x DVI-D 1 x Displayport	1 x VGA 1 x DVI-D 1 x S-Video (optional) 1 x CVBS (optional)	1 x VGA 1 x DVI-D 1 x S-Video (optional) 1 x CVBS (optional)
Power	Screw type AC-in 12V or 24V DC-in	Screw type AC-in 12V or 24V DC-in	Screw type AC-in 12V or 24V DC-in
Mounting	Panel mount VESA mount Rack mount (optional) Wall mount (optional)	Panel mount VESA mount Wall mount (optional)	Panel mount VESA mount Rack mount (optional) Wall mount (optional)
Modular Design	Yes	Yes	N/A
Front Bezel	IP65 w/ touch screen or glass	IP65 w/ touch screen or glass	IP65 w/ touch screen or glass

P6000 Selection Guide *(part iii)*

Features /Models	P6151	P6122	P6100
LCD panel	15" XGA, LED backlight	12.1" SXGA, LED backlight	10.4" SVGA, LED backlight
Touch screen	5 wire resistive touch USB or RS232	5 wire resistive touch USB or RS232	5 wire resistive touch USB or RS232
AD Board	AX98309 (Digital video input)	AX98305 (Combo video input)	AX98305 (Combo video input)
Video input	1 x HDMI 1 x DVI-D 1 x Displayport	1 x VGA 1 x DVI-D 1 x S-Video (optional) 1 x CVBS (optional)	1 x VGA 1 x DVI-D 1 x S-Video (optional) 1 x CVBS (optional)
Power	Screw type AC-in 12V or 24V DC-in	Screw type AC-in 12V or 24V DC-in	Screw type AC-in 12V or 24V DC-in
Mounting	Panel mount VESA mount Rack mount (optional) Wall mount (optional)	Panel mount VESA mount Rack mount (optional) Wall mount (optional)	Panel mount VESA mount Rack mount (optional) Wall mount (optional)
Modular Design	Yes	N/A	N/A
Front Bezel	IP65 w/ touch screen or glass	IP65 w/ touch screen or glass	IP65 w/ touch screen or glass

All-in-One Touch Panel Computers

Vertical Market

Open Frame
FDK



FDK Offerings

Open frame & changeable front bezel

Optional protection
Glass/ Touch

VESA mount &
mounting bracket



Rich I/O for devices

Wide voltage input &
power protection

FDK Overview



FDK172-834



FDK191-832

5W. Resistive touch or protection glass (optional)

Intel® Atom D2550 (-832 series for 19")
Intel® Celeron J1900 (-834 series for 17")

250nits

SXGA 1280 x 1024

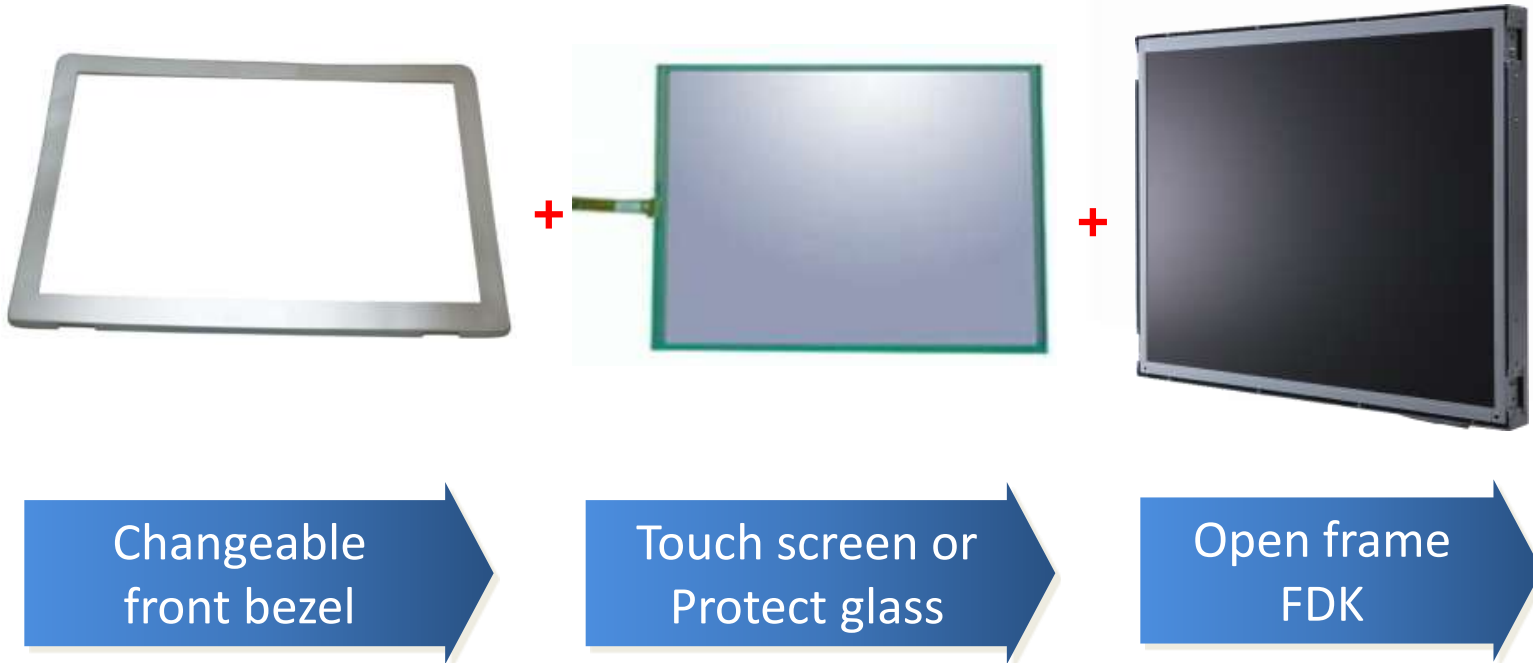
FDK Product Specification

CPU	Intel® Atom D2550 (-832) Intel® Celeron J1900 (-834)
Memory	1 x 204-pin SO-DIMM DDR3 up to 4 GB (-832) 1 x 204-pin SO-DIMM DDR3L up to 8 GB (-834)
Storage	1 x 2.5" SATA HDD, 1 x CF (-832 & -111) 1 x 2.5" SATA HDD, 1 x mSATA/CFast (-834 & -881)
I/O Ports	3 or 4 x RS-232 ports 2 x RJ-45 for Giga Ethernet with Intel solution 4 x USB 2.0 or 2 x USB 2.0 + 2 x USB 3.0 1 x DC terminal plug 1 x Switch for power on/off (ATX) 1 x VGA output 1 x Line-out
Expansion	1 or 2 x PCIe Mini Card Slot
LCD Size	17" / 19"
Touch	Optional resistive touch
Power	Wide voltage input (10~30V or 9~36V)

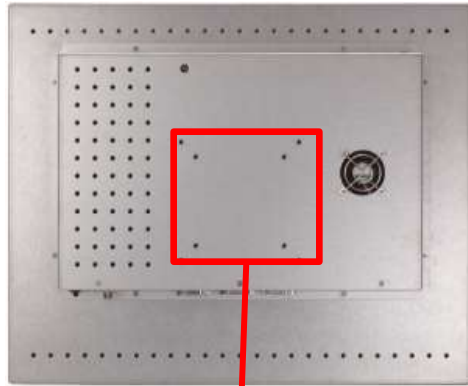


Product Features

■ Optional touch screen/glass & front bezel



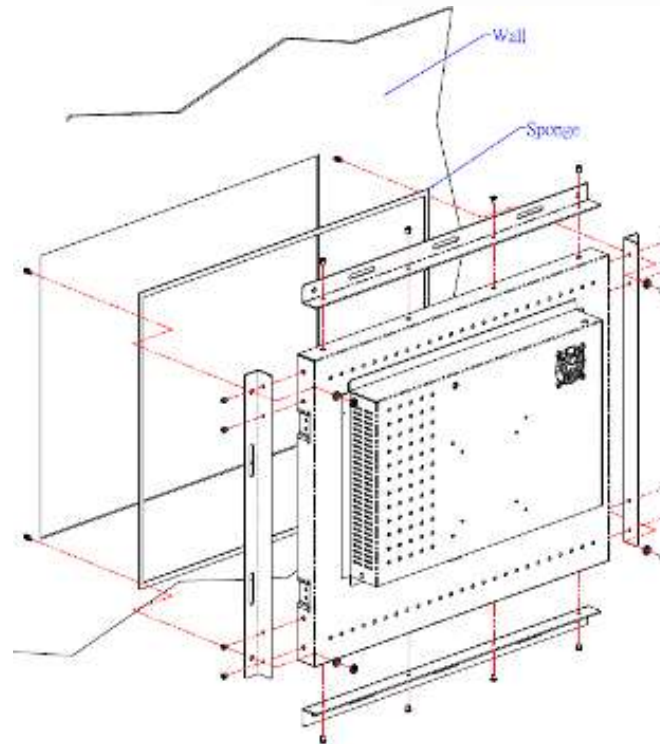
Product Features



VESA 75 / 100 mount



Mounting bracket(optional)

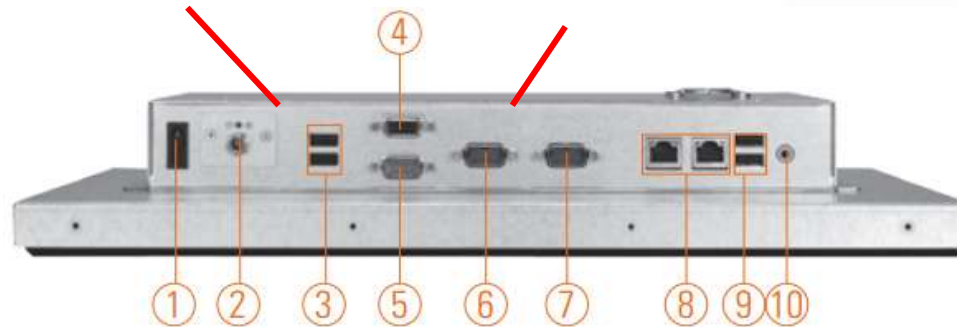


Product Features

AC screw conn. or DC phoenix conn.
(wide voltage input w/ protection)



VGA output for dual view



1	Power switch (ATX)	6	COM 1
2	Power Input connector (phoenix or screw type)	7	COM 2
3	2 X USB 2.0	8	2 x Ethernet (RJ-45)
4	VGA	9	2 X USB 2.0
5	COM 3	10	Audio (Line-out)

Application - ATM Machine



FDK150-830

Why Axiomtek?

- Flexible Panel PC kit with industrial grade long life time
- To ease the system integrators' burden in PC and display
- Rich I/O to connect peripheral devices & 12/24V voltage power input

Application - Theatre Control Panel



FDK170-830

Why Axiomtek?

- Supports 24VDC and easily connect with PACs or PLCs directly
- Outstanding configuration flexibility delivering best ROI
- Benefit from various mounting options

Application - Control Room HMI



FDK170-830

Why Axiomtek?

- Flexible Panel PC kit to ease the system integration
- Rich I/O to connect peripheral devices & wide voltage power input
- Cost effective

FDK Summary

1

Open frame flexible design & multi mounting way to ease system integration

2

Wide Voltage power input and rich I/O for peripheral devices connection

3

Cost effective

FDK Selection Guide

Features/ Models	FDK191-832	FDK172-834
Mainboard	SBC87832 (Intel® NM10)	SBC87834 (SoC integrated)
CPU	Intel® Atom™ processor D2550 1.86 GHz	Intel® Celeron™ processor J1900 2.0 GHz
Memory	1 x 204-pin SO-DIMM DDR3 up to 4GB	1 x 204-pin SO-DIMM DDR3L up to 8GB
Storage	1 x 2.5" SATA HDD 1 x CF card slot	1 x 2.5" SATA HDD 1 x mSATA or CFast card slot
Bottom side I/O	3 x RS-232 1 x RS-232/422/485	1 x RS-232 2 x RS-232/422/485
	2 x RJ45 for Giga Ethernet	2 x RJ45 for Giga Ethernet
	4 x USB 2.0	2 x USB 2.0 2 x USB 3.0
	1 x DC plug	1 x DC plug
	1x Switch for power on/off	1x Switch for power on/off
	1 x VGA	1 x VGA
	1 x Line-out	1 x Line-out
Expansion	1 x PCIe Mini card slot	2 x PCIe Mini card slot
OS	Win XP, Win 7, WES, WES 7	Win 7(64bit), Win 8, WES, WES 7

All-in-One Touch Panel Computers

Medical PC

Healthcare &
Medical PC
MPC & MMT

MPCxxx-873 Summary



MPC175



MPC225

5W. Resistive touch

3rd Generation Intel® Core i3/i5/i7

Isolated LAN/COM/USB

17" / SXGA

22" / WSXGA

MPCxxx-873 Offerings

**Good thermal design:
aluminum rear cover**



Supports multi drive

Camera



**Supports WLAN &
internal antenna**

**Water/Dust proof
design: IP65 front
bezel, enclosure IPX1**

**Supports isolated
COM, LAN & USB**

**Users friendly
interface design:
front OSD**

Slim & safety design



MPC225/175 Specification

CPU 3rd generation Intel® Core i3/i5/i7 Processor (35W)

Touch 5-wire resistive type

Memory 2x 204-pin DDR3 SO-DIMM max. up to 16GB

Display 17"/22" TFT LCD with LED backlight

Storage 1x 2.5" SATA HDD & 1 x mSATA

I/O Ports 2x RS-232 (MPC225)
1x RS-232/422/485 (isolated 4KV)
2x Gigabit Ethernet (isolated 4KV)
2x USB2.0 (isolated 4KV)
2x USB2.0 (MPC225), 2x USB3.0
1x Switch for power on/off (ATX)
1x DP
1x Line-out, 1 x Mic-in

Expansion 2 x mini card slot, 1 x PCI or 1 x PCIe x4 slot

Power input 24VDC w/medical power adapter

Others 1 x 5M pixels camera, 2 x 2W speaker

Certification CE, UL60601-1, EN60601-1



Product Features

■ Powerful Computing Performance

Supports 3rd Generation Intel® Core i3/5/7 Processor (35W)

Ivy Bridge (Intel® QM77 chipset)

2 x DDR3 DO-
DIMM

2 x USB 3.0

PCIe Gen3

2 x Gigabit LAN



Product Features

IPX1

- When users splat (90 degree) water/drink/blood in MPC, IPX1 design can protect system from entering water
- Fanless cooling system



Product Features

Add-on Card

- Install video capture card for image processing
- Install data acquisition & control to collect data



Video capture card



Multiple serial cable



DA&C



Product Features

Multiple Devices

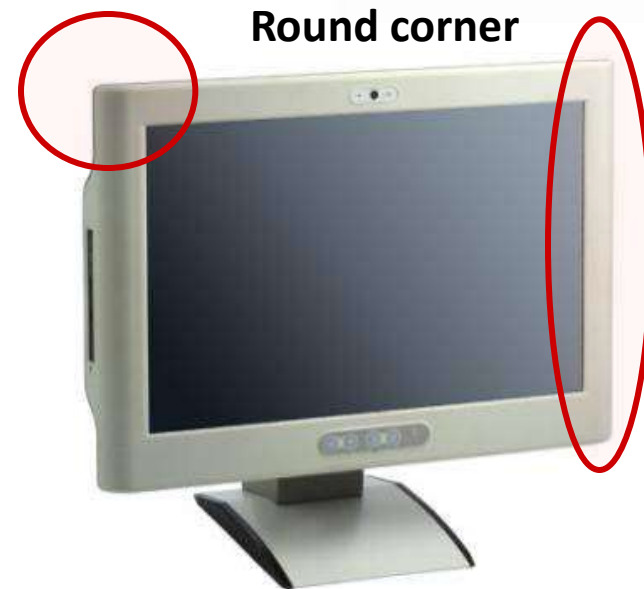
- MPC supports internal RFID / Wi-Fi / Bluetooth module
- 5 mega pixel camera



Product Features

Slim & Safety Design

- Design round corner to protect users
- Slim design: thickness 76mm only
- Front OSD: volume adjustment



Application - Hospital



ICU

MPC225 is mounted via an ARM in ICU (Intensive Care Unit) with antibacterial keyboard / mouse to record the status of each patient.



Application- Hospital

Pediatrics Department

MPC225 is fixed on the wall closing to height / weight measuring instruments to input / record data.



Summary

1

Powerful computing performance

Supports 3rd Generation Intel® Core i3/i5/i7 CPU

2

Expansion PCIe / PCI slot + Isolated I/O

Supports one PCI or PCIe x4

3

Users friendly interface design :front OSD

Supports Touch on & off/Brightness+/-/Volume+/-

MPCxxx-832 Summary



MPC102



MPC152

5W. Resistive touch

Intel® N2600

Intel® D2550

Isolated COM

10.4" / SVGA

15" / XGA

MPCxxx-832 Offerings (4:3 resolution)

Good thermal design:
aluminum rear cover



Supports WLAN &
internal antenna

Water/Dust proof
design: IP65 front
bezel

Supports
customized overlay

Ultra light design:
plastic housing

Supports touch
on/off function

Super slim design

Supports isolated
COM port

Supports AC or DC
power input



MPC102/152-832 Specification

CPU Intel® Atom 2 cores N2600 @1.6GHz/D2550 @1.86GHz (MPC152)

Touch 5-wire resistive type

Memory 1 x 204-pin DDR3 SO-DIMM max. up to 2 or 4GB (MPC152)

Display 10.4"/15" TFT LCD w/LED backlight

Storage 1 x 2.5" SATA HDD & 1 x CF

I/O Ports 1 x RS-232 (isolated 4KV, MPC152)
1 x RS-232/422/485
1 x Gigabit Ethernet
1 x USB2.0 (isolated 4KV)
1 x Switch for power on/off (ATX)
1 x DP
1 x Line-out

Expansion 1 x mini card slot

Power input AC w/medical adapter or terminal block (10~30V)

Certification CE, UL60601-1, EN60601-1



Product Features

- Low power, better performance Intel® Processor
- Modern design: industrial plastic front bezel
- Supports touch on/off, HDD & Power LED indicator



- Supports isolated COM port



Product Features



Ultra light: 1.8kg

Super slim: 45.8 mm



VESA/Desktop / Wall / Panel Mount (optional)



Product Features



Power Input

AC version : 100-240V AC-DC 60W medical adapter

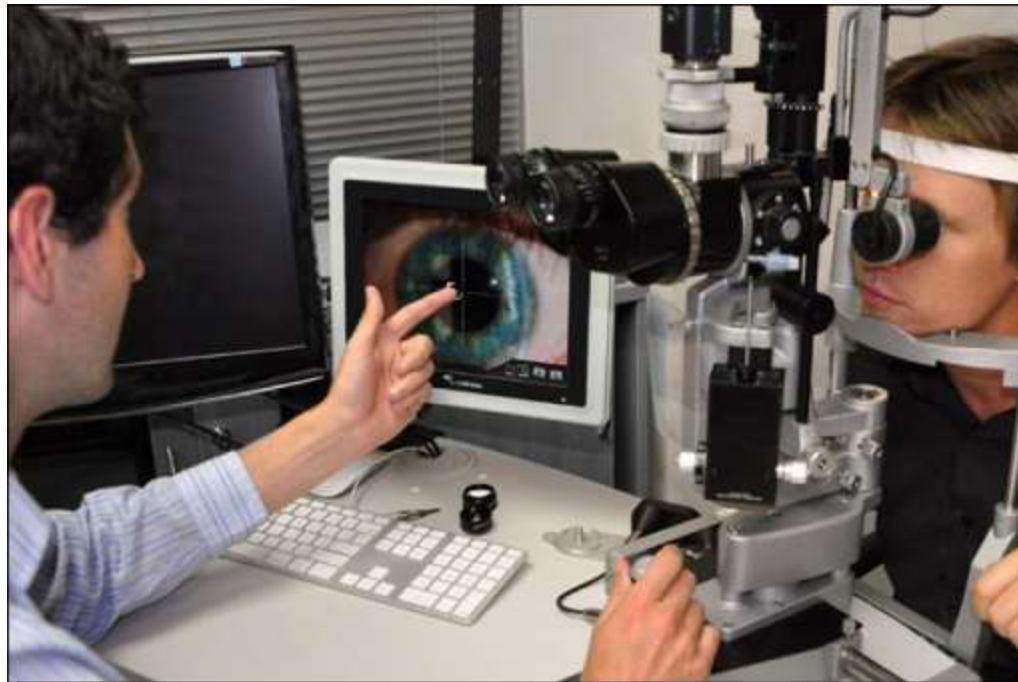
DC version : 10-30 VDC with over-current protection fuse

UL60601-1, EN 60601-1, CE and FCC certified

Application - Medical Device

Eye examination device

MPC102 is connected to a eye examination device for image display. Let doctor can operate the medical device via our medical PC.



Application - Medical Devices

Skin rejuvenation solutions

MPC102-832 is used in hospital in Israel.

<https://www.youtube.com/watch?v=G8OjQLc10lQ>



Summary

1

Long term support on 10.4" & 15" with slim & light design

2

AC & DC power with UL/EN60601-1^{3rd} medical certification

3

Touch on & off function, Isolated COM

MPC Selection Guide

Features/Models	MPCxxx-873	MPCxxx-832
Mainboard	SBC87873 (Intel® QM77 PCH)	SBC87832 (Intel® NM10 chipset)
CPU	3rd Gen Intel® Core i3/5/7 Processor (35W)	Intel® Atom Processor N2600 2 cores @1.6 GHz (MPC102-832) Intel® Atom Processor N2600 2 cores @1.6 GHz (MPC152-832)
Memory	2x 204-pin DDR3 SO-DIMM, max. up to 16 GB	1x 204-pin DDR3 SO-DIMM, max. up to 2 GB (4GB for MPC152-832)
Storage	1x 2.5" SATA HDD, 1x mSATA	1x 2.5" SATA HDD, 1x CF
Bottom side I/O	1x RS-232/422/485 (isolated 4KV) 2x RS-232(MPC225-873)	1x RS-232/422/485 1x RS-232 (isolated 4KV)
	2x RJ45 for Gigabit Ethernet (isolated 4KV)	2x RJ45 for Gigabit Ethernet
	2x USB 3.0 2x USB 2.0(MPC225-873) 2x USB 2.0(isolated 4KV)	2x USB 2.0(MPC175-873) 4x USB2.0(MPC225-873)
	24VDC AC-DC medical power adapter	100~240V AC-DC medical power adapter 10~30VDC w/protection fuse
	1x DP	1x DP
	1x PCI or PCIe slot	
	1x Mic-in, 1x Line-out	1x Line-out
Others	2x 2W speaker 1x 5M pixels camera	
Focus market	SI & hospital	System manufacturer

MMT225 Specification

LCD Panel	22" TFT LCD, CCFL 1680 x 1050 300 nits
Input Signal	VGA Video : R.G.B. Analog 0.7v Peak-to Peak Video/S-Video/DVI/Audio-in Touch screen : USB interface 3 USB (1 slave, 2 host)
I/O Connector	1x USB for touch screen control/2x USB(2 host) 1x VGA input/1x RCA video/1x S-Video for video 1x DVI/1x lock-type DC power input/1x Audio-in
Power input	Lock type 24V AC/DC medical power adapter
Touch Screen	resistive type
Certification	UL60601-1, EN60601-1, CE, FCC class B
Others	Supports NTSC, PAL 2x 2W speaker



All-in-One Touch Panel Computers

*Information
Entertainment*

**Infotainment
IFO**

IFOxxx-873 Summary



MPC175



MPC225

5W. Resistive touch

3rd Generation Intel® Core i3/i5/i7

17" / SXGA

22" / WSXGA

IFOxxx-873 Offerings

Good thermal design:
aluminum rear cover



Supports multi drive

Water/Dust proof
design: IP65 front
bezel, enclosure IPX1

Camera



Supports WLAN
& internal
antenna

User-friendly interface
design: front OSD

Slim & safety design

IFO2225/2175-873 Specification

CPU 3rd Generation Intel® Core i3/i5/i7 Processor (35W)

Touch 5-wire resistive type

Memory 2x 204-pin DDR3 SO-DIMM max. up to 16GB

Display 17"/22" TFT LCD with LED backlight

Storage 1 x 2.5" SATA HDD & 1 x mSATA

I/O Ports 2x RS-232 (IFO2225-873)
1x RS-232/422/485
2x Gigabit Ethernet
2x USB2.0
2x USB2.0 (MPC225), 2 x USB3.0
1x Switch for power on/off (ATX)
1x DP
1x Line-out, 1x Mic-in

Expansion 2x mini card slot, 1x PCI or 1x PCIe x4 slot

Power input 24VDC w/power adapter

Others 1x 5M pixels camera, 2x 2W speaker

Certification CE



Product Features

- **Application: Infotainment**

- **Features**

Fanless cooling system

Water-proof & anti-scratch: IPX1

- **Products:**

Powerful computing performance

Supports 3rd Generation Intel® Core i3/i5/i7 Processor (35W)

Ivy Bridge (Intel® QM77 chipset)



Product Features

- Install video capture card for image processing
- Install data acquisition & control to collect data



Video capture card



Multiple serial cable



DA&C

Summary

1

Powerful computing performance

Supports 3rd Generation Intel® Core i3/i5/i7 CPU

2

Expansion PCIe / PCI slot

Supports one PCI or PCIe x4

3

Users friendly interface design: front OSD

Supports Power on & off/Brightness+-/Volume+-

I/O Selection Guide

Features/Models	IFO2225-873	IFO2175-873
Mainboard	SBC87873 (Intel® QM77 PCH)	SBC87873 (Intel® QM77 chipset)
CPU	Intel® 3rd Generation Intel Core i3/5/7 Processors(35W)	Intel® 3rd Generation Intel Core i3/5/7 Processors(35W)
Memory	2x 204-pin DDR3-SODIMM, max. up to 16 GB	2x 204-pin DDR3-SODIMM, max. up to 16 GB
Storage	1x 2.5" SATA HDD, 1x mSATA	1x 2.5" SATA HDD, 1x mSATA
Bottom side I/O	1x RS-232/422/485 2x RS-232	1x RS-232/422/485
	2x RJ-45 for Gigabit Ethernet	2x RJ-45 for Gigabit Ethernet
	2x USB 3.0 4x USB 2.0	2x USB 3.0 2x USB 2.0
	24VDC AC-DC power adapter	24VDC AC-DC power adapter
	1x DP	1x DP
	1x PCI or PCIe slot	1x PCI or PCIe slot (optional)
	1x Mic-in, 1x Line-out	1xMic-in, 1x Line-out
Others	2x 2W speaker 1x 5M pixels camera	2x 2W speaker 1x 5M pixels camera

Applications- Infotainment

Hotel check-in



**Interactive
advertising -
shopping mall**



**Visitor control -
company &
hospital**



www.crystal-display.com
info@crystal-display.com
+44(0)1634 327420