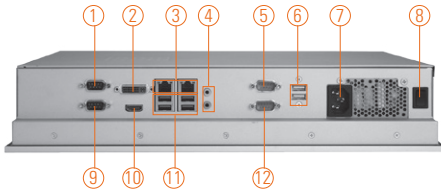
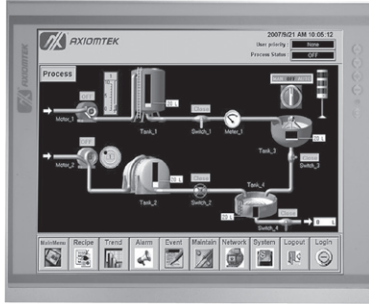


# P1157S-871

15" XGA TFT Intel® Core™ i family/  
Pentium®/ Celeron® Slim Industrial Touch  
Panel Computer



- |                                         |                   |                    |
|-----------------------------------------|-------------------|--------------------|
| 1. COM 1 with 5V & 12V (RS-232/422/485) | 6. USB 2.0 x 2    | 11. USB 3.0 x 4    |
| 2. DVI-I                                | 7. AC plug        | 12. COM 4 (RS-232) |
| 3. Ethernet x 2                         | 8. Power switch   |                    |
| 4. Audio (MIC-in/Line-out)              | 9. COM 2 (RS-232) |                    |
| 5. COM 3 with 5V & 12V (RS-232)         | 10. HDMI          |                    |

## Features

- 15" XGA TFT LCD display
- LGA1155 socket 3rd & 2nd Generation Intel® Core™ i7/i5/i3, Celeron® & Pentium® processor
- Intel® Q77 chipset
- Easy installation: a less screw design for user's convenience
- 4 USB 3.0, 2 USB 2.0 and 4 COM ports
- Built-in speakers and optional Wi-Fi 802.11 b/g/n module
- Robust aluminum with IP65 compliant front bezel design



▲ Side view



## Introduction

The P1157S-871 is a multimedia 15" touch panel PC for kiosk application. It has a fashionable mechanism design and industrial-grade material front bezel which can avoid damage from chemical corrosion. To meet the demands of multimedia application, the P1157S-871 is powered by a high performance LGA1155 socket 3rd & 2nd Generation Intel® Core™ i7/i5/i3, Pentium® & Celeron® processors with the Intel® Q77 Express chipset. It features four COM ports, two Gigabit Ethernet and up to 16 GB memory of dual-channel DDR3 that delivers high computing capability for high performance-demanding applications. The industrial panel PC is most suitable for kiosk, factory and automation.

### Dual Monitor Display

The P1157S-871 supports DVI and HDMI simultaneously that features the use of dual display devices for increasing the area available for programs running on a single computer system. It not only increases larger screen viewing but also improves personal productivity.

### Speaker and WLAN Antenna Supported

The P1157S-871 features built-in speakers for kiosk application to display multimedia content program. It also supports WLAN module antenna (optional) for wireless network connectivity.

### Friendly Less Screw Design

Removing the back cover to maintain the system in unscrewing 3 screws only that saving your time and increasing our work efficiency many times.

## Specifications

Front Bezel	Aluminum w/ IP65/NEMA 4 rugged protection	
LCD Panel	Display Type	15" XGA TFT LCD
	Brightness	350 nits
	Resolution	1024 x 768 pixels
	Viewing Angle	160°/140°
Main System	CPU	LGA1155 socket 3rd & 2nd Generation Intel® Core™ i7/i5/i3, Celeron® & Pentium® processor
	Chipset	Intel® Q77
	System Memory	2 x 204-pin DDR3 SO-DIMM max. up to 16 GB
	BIOS	AMI UEFI BIOS with OA 3.0 built
	Storage	1 x 3.5" or 2 x 2.5" SATA HDD
	Watchdog Timer	255 levels, 1-255 sec.

## Specifications

IO Connector	2 x RS-232 (COM 2 & COM 4) 1 x RS-232/422/485 with 5V & 12V (COM 1) 1 x RS-232 with 5V & 12V (COM 3) 1 x DVI-I 1 x HDMI 4 x USB 3.0 2 x USB 2.0 2 x 10/100/1000 Mbps Ethernet 1 x Audio (Mic-in/Line-out)
Expansion Interface	N/A
Touchscreen	5-wire resistive type Light transmission 79% 1 million activations (typical) at a single point
Power Supply	100 ~ 240VAC, 270W
Dimensions	378 mm (14.88") (W) x 72.2 mm (2.84") (D) x 309 mm (12.17") (H)
Packing Dimension	610 mm (24.02") (W) x 260 mm (10.24") (D) x 590 mm (23.23") (H)
Weight(net/gross)	5.2 kg (11.46 lb)/ 7.5 kg (16.53 lb)
Environment	Operating Temperature: 0° ~ +45°C (+32°F ~ +113°F) Storage Temperature: -20°C ~ +65°C (-4°F ~ +149°F) Relative humidity: 10 ~ 95%@40°C, non-considering Operating vibration: 1.0 G, 5-500Hz, random
Certificate	CE

## Ordering Information

P1157S-871	15" XGA TFT Intel® Core™ i7/i5/i3, Celeron® & Pentium® processor slim industrial touch panel computer
------------	-------------------------------------------------------------------------------------------------------

\* Specification and certifications are based on options and may vary.

## Optional Accessories

82211271000E	Wireless LAN kit
82211570050E	VESA & WALL mount kit
82211570060E	Rack mount kit
72211571000E	2 x 2.5" HDD Bracket
E202003330	VM-101 (VESA ARM clamp type)
E202003329	VM-105 (VESA ARM wall-mount)

## Optional OS Installation

Windows® XP
Windows® Vista
Windows® 7/8/8.1
Windows® Embedded 7/8



▲ Less screw design

## Dimensions

