

BROCHURE

TRANSPARENT LED SERIES

18.02.2022

www.crystal-display.com

www.crystal-digitalsignage.com

FOR INDUSTRIAL DISPLAY SOLUTIONS

FOR DIGITAL SIGNAGE SOLUTIONS



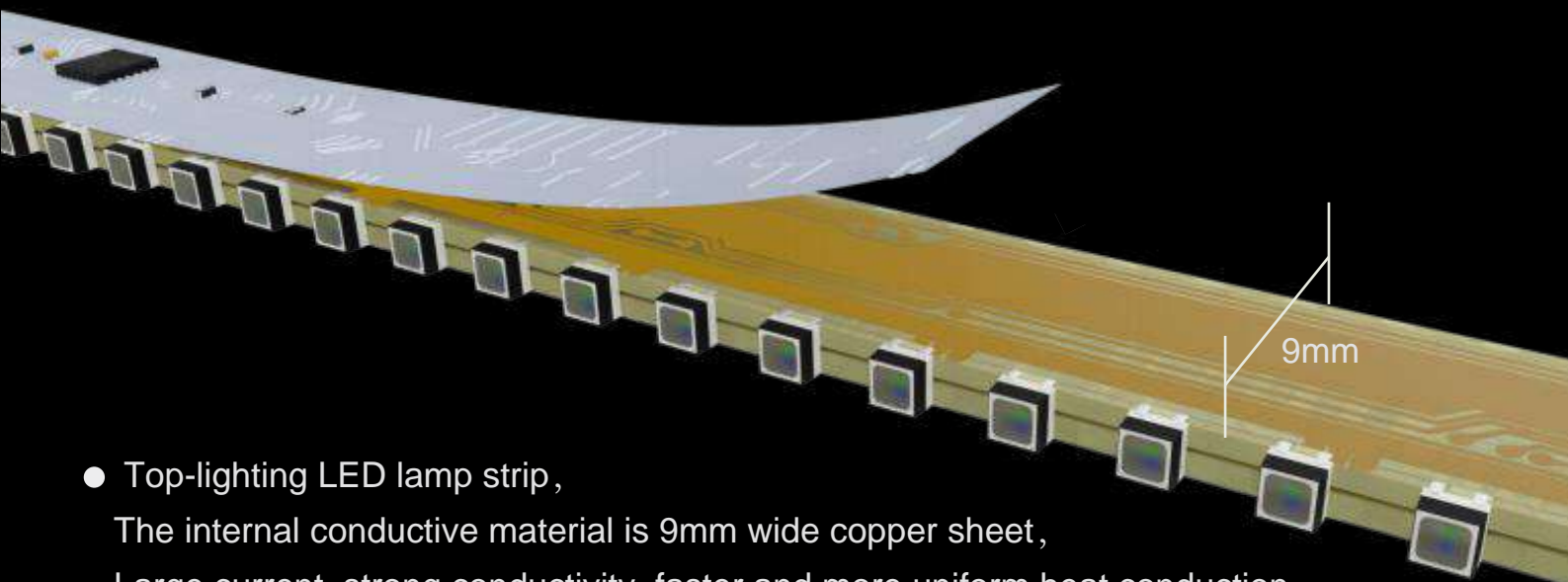
TRANSPARENT LED DISPLAY

Fourth Generation PCB Strip Screen

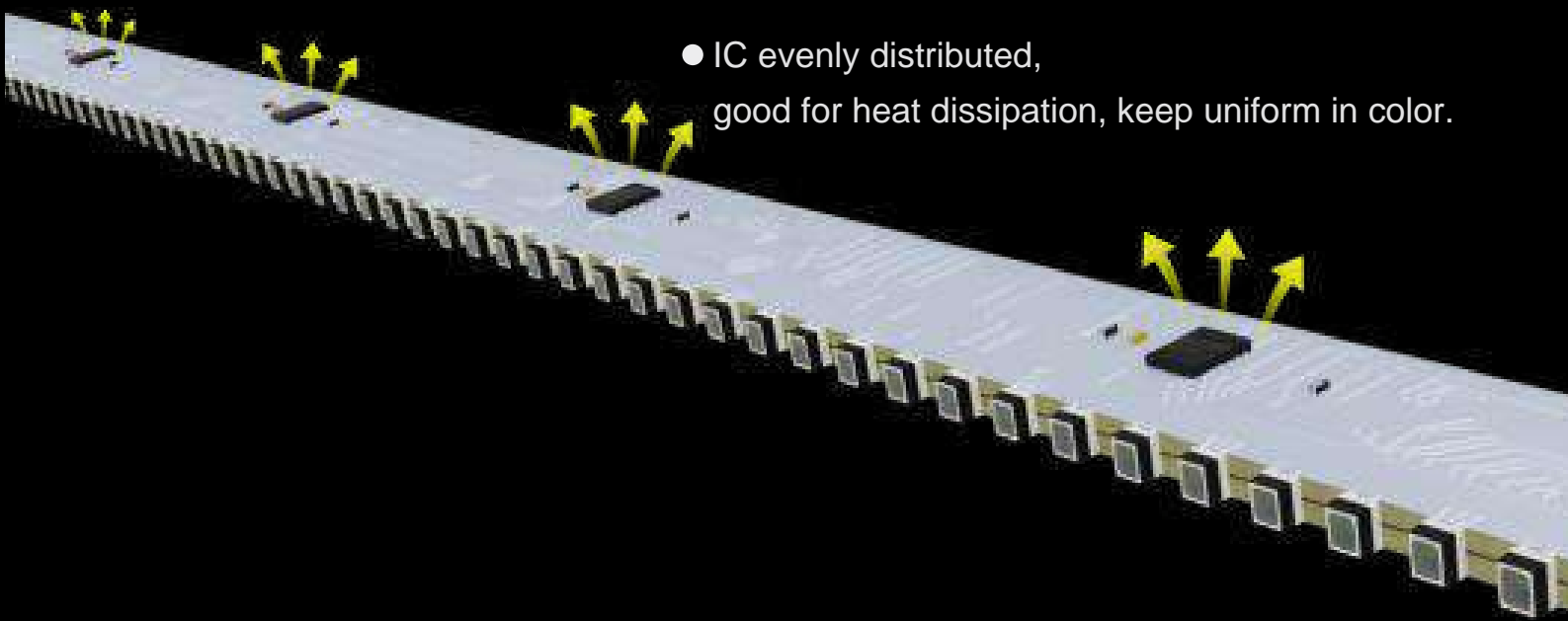


Core technology

side mounting, front lighting



- Top-lighting LED lamp strip,
The internal conductive material is 9mm wide copper sheet,
Large current, strong conductivity, faster and more uniform heat conduction.



- IC evenly distributed,
good for heat dissipation, keep uniform in color.

Only high quality LED Lamps are used



High Brightness



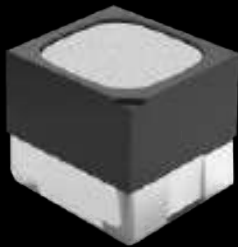
Consistency



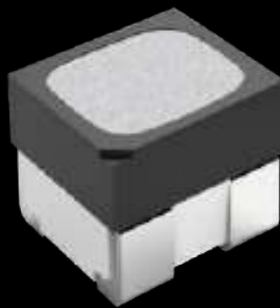
Anti-UV



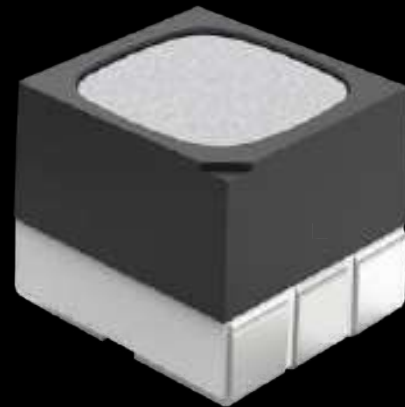
Long life span



SMD 1515



SMD1921



SMD2727

Using a matte encapsulation lens to enhance the colour balance combined with a custom design black housing to increase the contrast ratio, our lamps out shadow all others!

CRL series



CRL for indoor

Customized curtain wall solutions



High-definition image



Customization



Pixel reduction



Neat and
transparent appearance



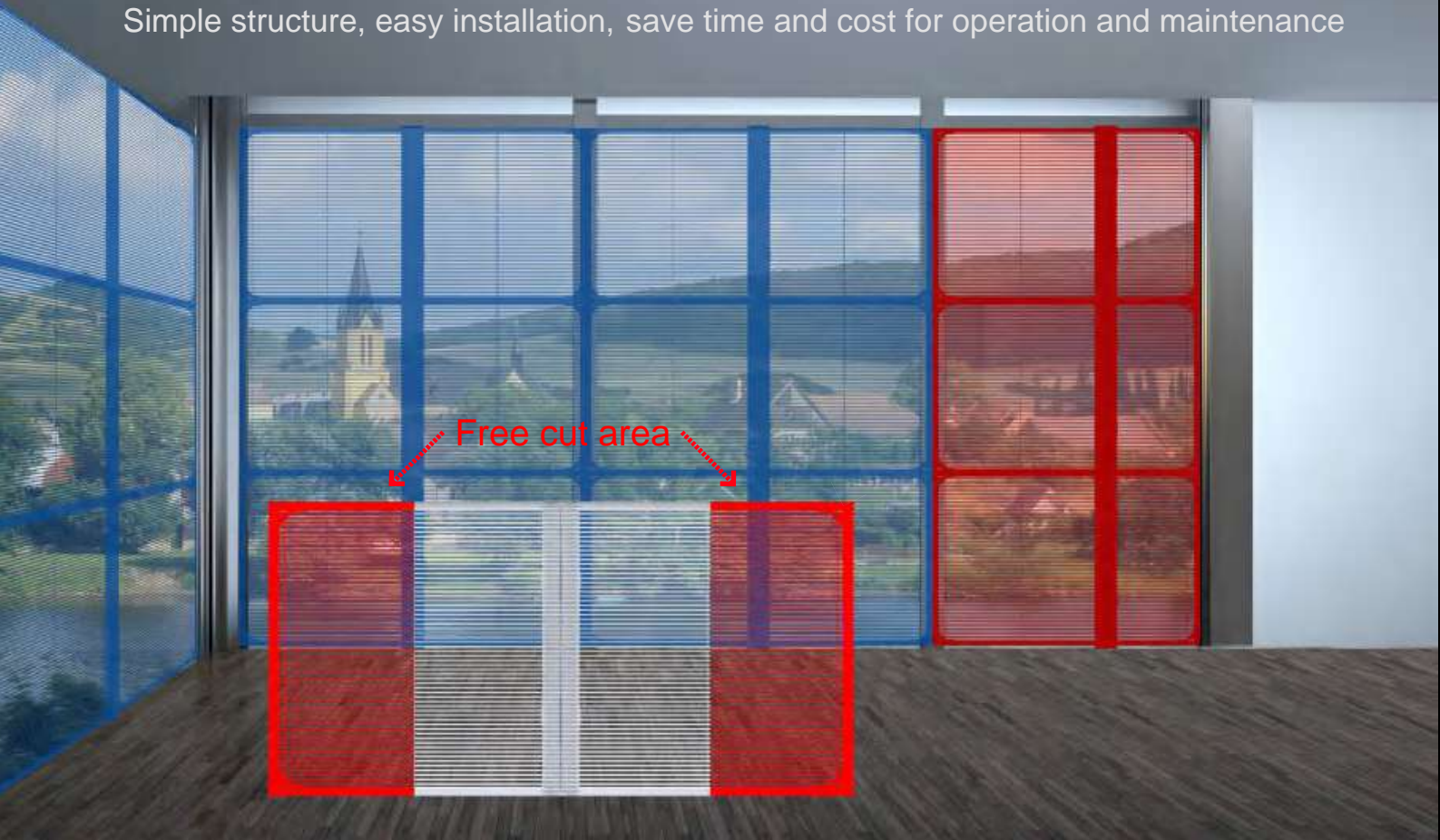
Easy installation

Transparent LED screen (CRL series) is a standard and easy customizable product with high cost-effectiveness, designed for varieties of digital glass curtain wall solution requirements.

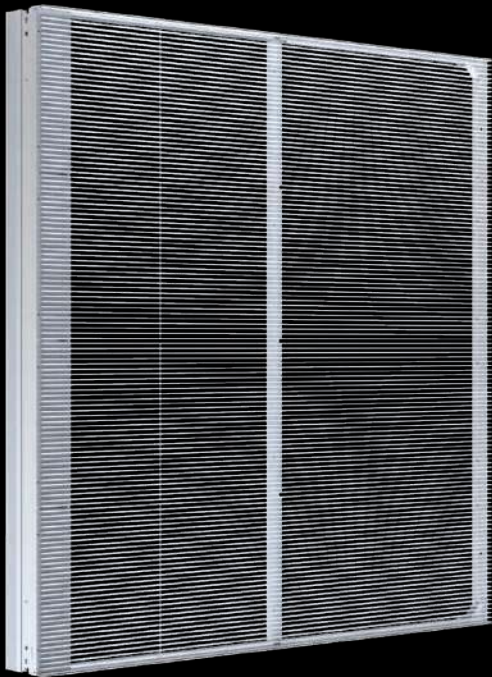
Modular structure, super high customization

Reduce pixels on PCB board to match all kinds of curtain wall structures or completed glass curtain wall.

Simple structure, easy installation, save time and cost for operation and maintenance



Side-spine panel



High refresh, high brightness

High refresh, high contrast ratio, clearer image

Brightness could be as high as 4500 - 7500nits

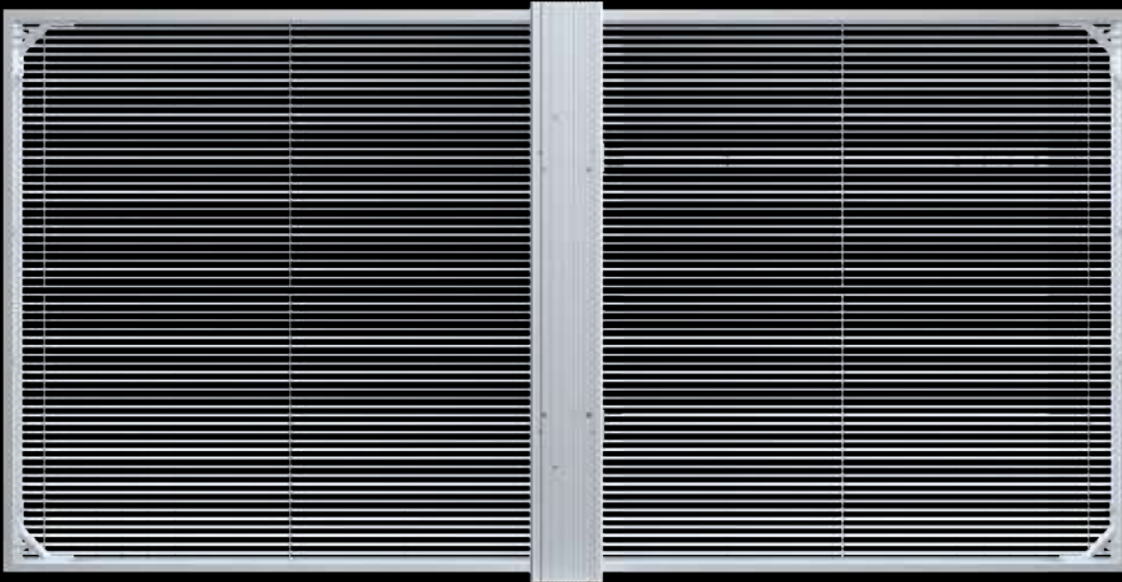
Energy conservation and environment protection.

Average power consumption is less than $240\text{W}/\text{m}^2$



Light weight design

The weight is 1/2 less than traditional display,
no additional steel structure required.

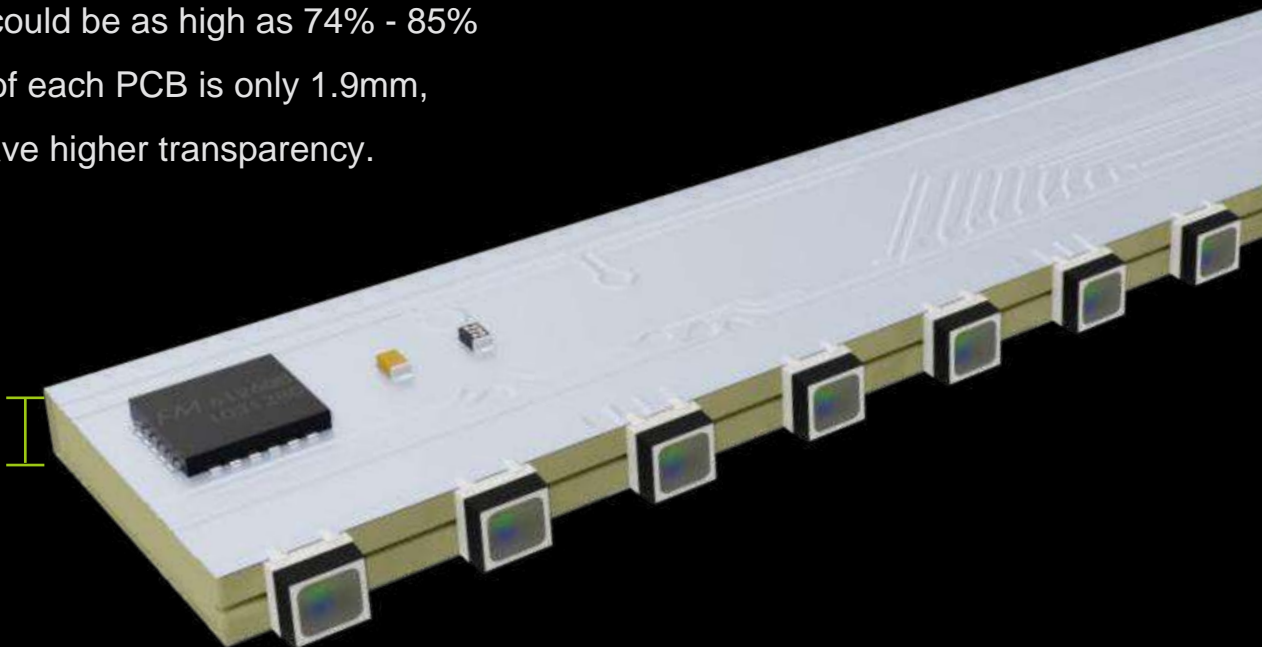


Neat and transparent appearance, better ventilation and lighting

Transparency could be as high as 74% - 85%

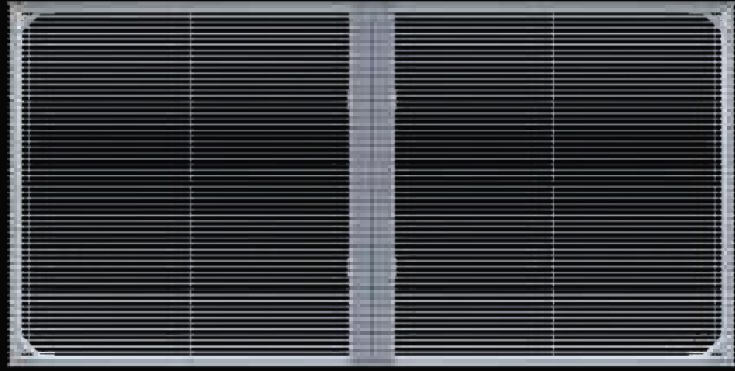
The thickness of each PCB is only 1.9mm,
which would have higher transparency.

1.9mm

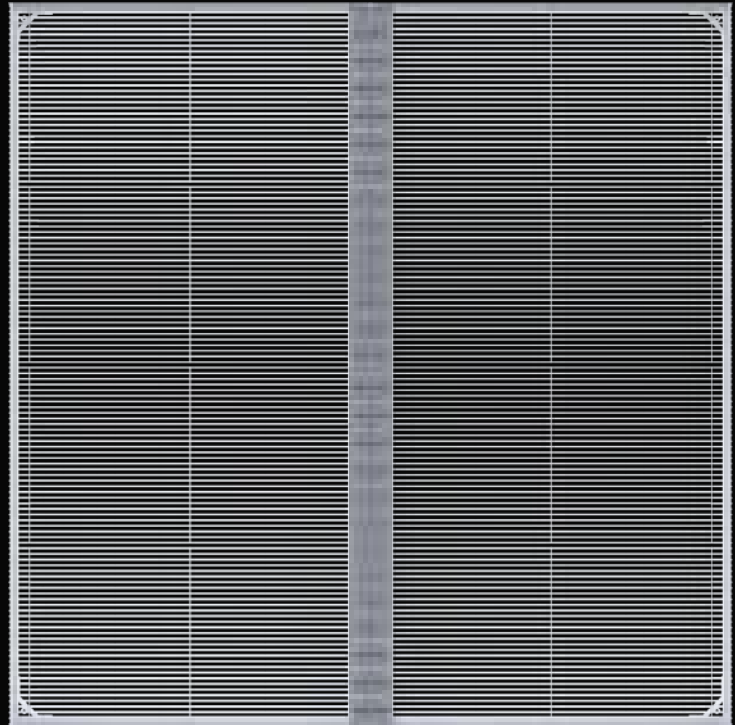


Specification

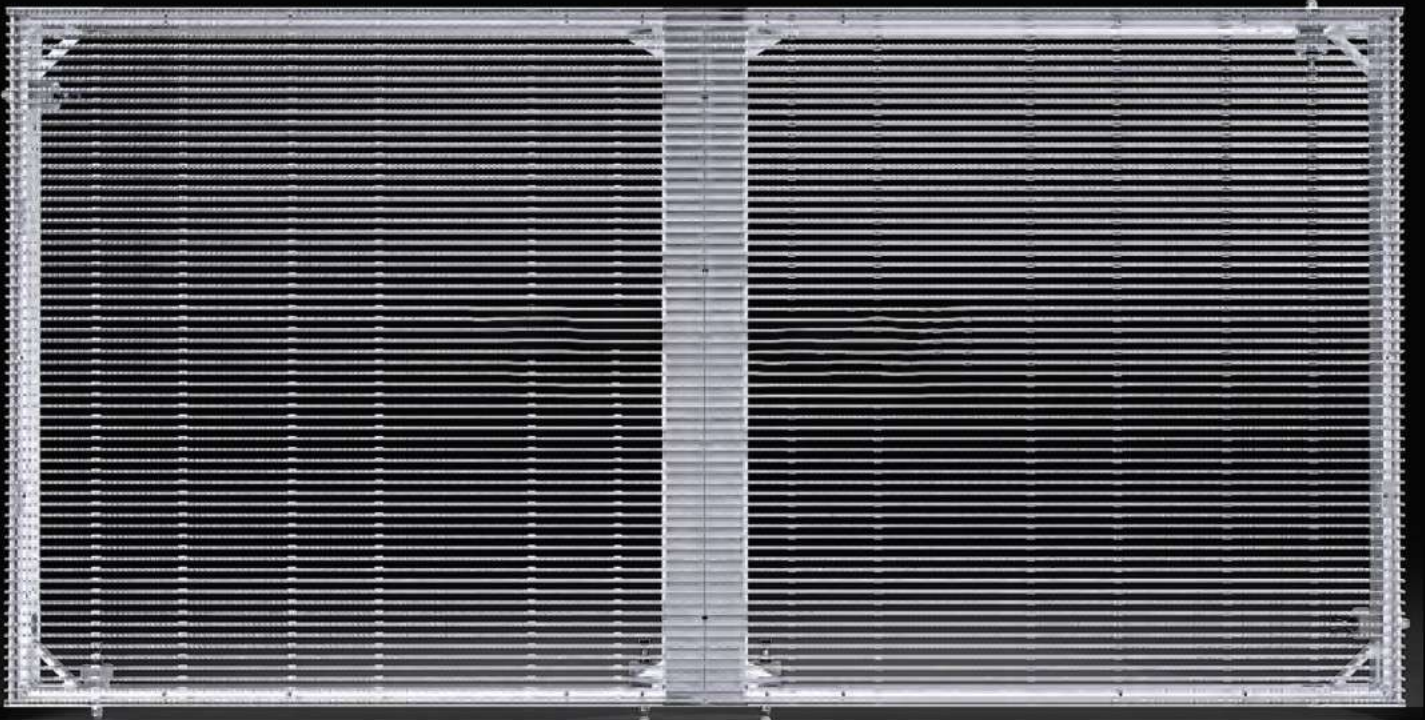
Cabinet size:
1000mm x 500mm



Cabinet size:
1000mm x 1000mm



Model	LED	Brightness (cd/m ²)	Cabinet size (WxH)(mm)	Cabinet Resolution	Transparency	Max. Power (W/m ²)	Avg. Power (W/m ²)
CRL 3.9	SMD1515	4500-5000	1000 x 500/1000	256 x 64/128	80%	800W	240W
	SMD1921	5000-6000	1000 x 500/1000	256 x 64/128	74%	800W	240W
CRL 8	SMD1515	4500-5000	1000 x 500/1000	128 x 64/128	80%	800W	240W
	SMD1921	5000-6000	1000 x 500/1000	128 x 64/128	74%	800W	240W
	SMD2727	7000-7500	1000 x 500/1000	128 x 64/128	70%	800W	240W
CRL 10	SMD1921	4500-5500	1000 x 500/1000	96 x 48/96	82%	800W	240W
	SMD2727	7000-7500	1000 x 500/1000	96 x 48/96	77%	800W	240W
	SMD2828	7000-7500	1000 x 500/1000	96 x 48/96	77%	800W	240W
CRL 16	SMD1921	3000-3500	1000 x 500/1000	64 x 32/64	88%	800W	240W
	SMD2727	7000-7500	1000 x 500/1000	64 x 32/64	85%	800W	240W
	SMD2828	7000-7500	1000 x 500/1000	64 x 32/64	85%	800W	240W



CR for indoor

Rental and events solutions

● Application



Shopping malls



Rental solutions



Stages and concerts



Events and exhibitions



Retail store



Office



Hotel



Other temporary
or permanent project

● Advantage features

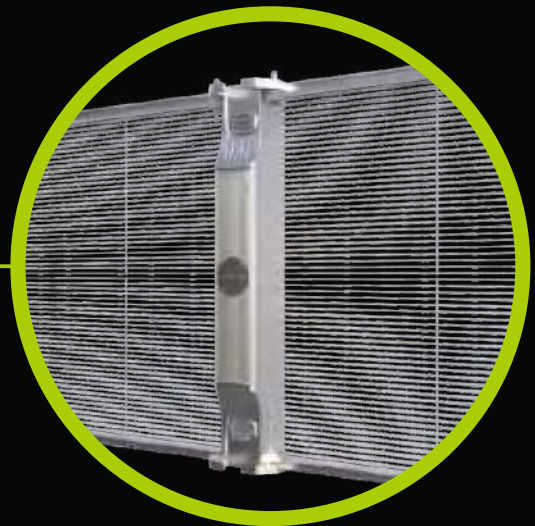


1 Fast lock

Unique Tool-less locking system.

2 Die-casting aluminum

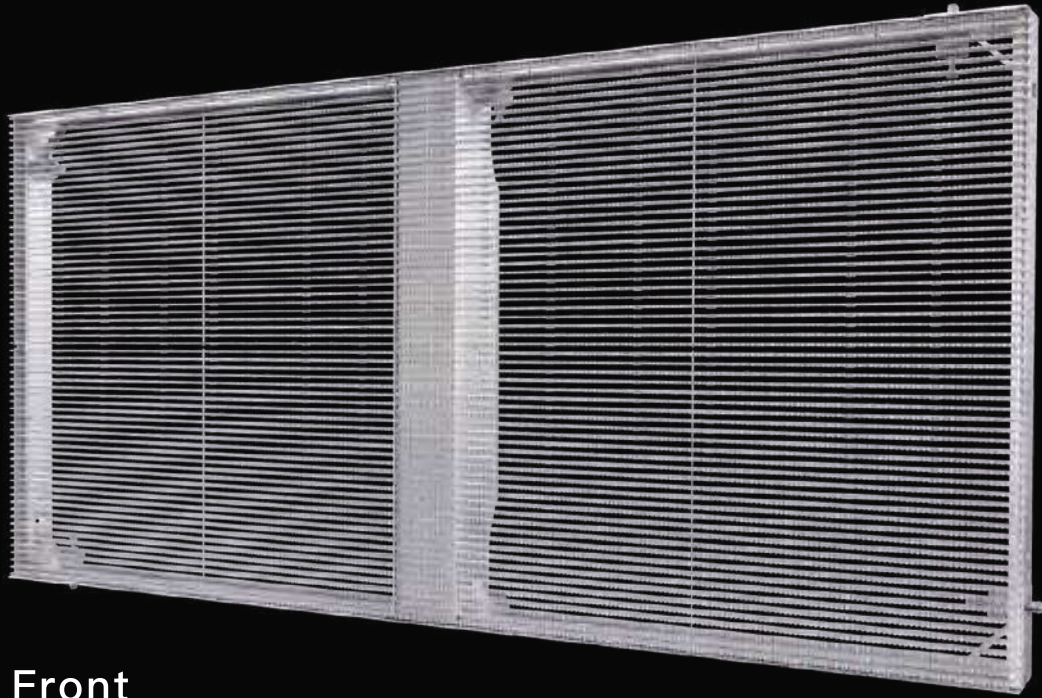
Die-casting Aluminum profile ensures perfect alignment of cabinets.



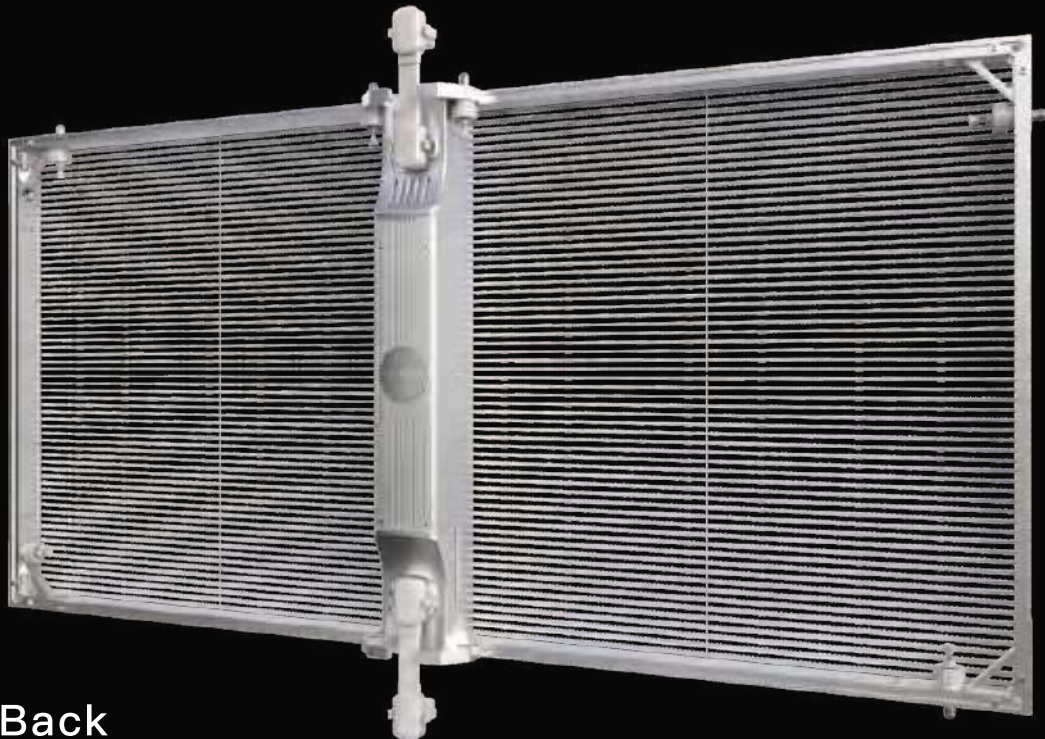
3 Easy installation

One-plug design for power & signal cables.

● Over view



Front

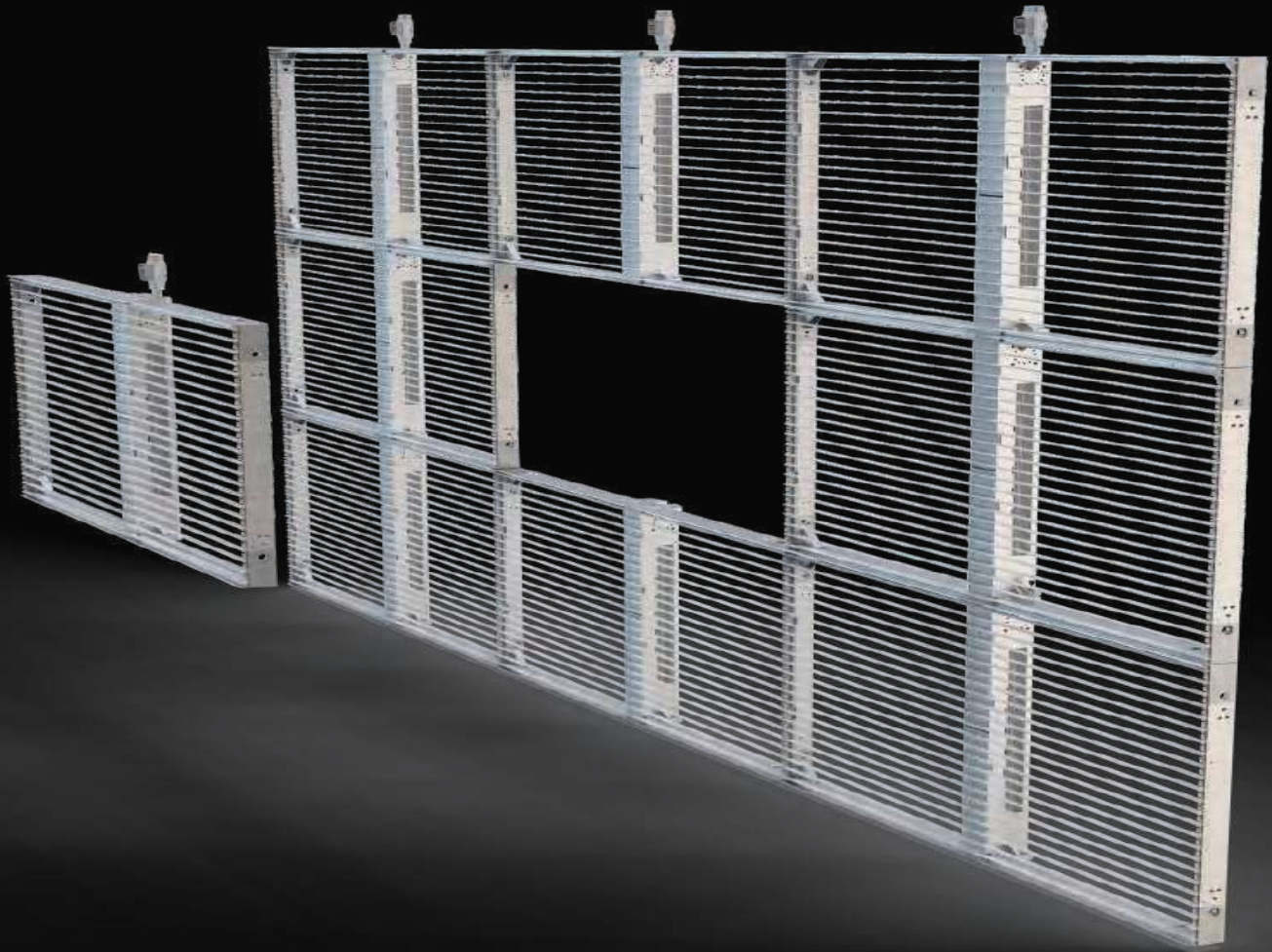


Back

● Maintenance and installation

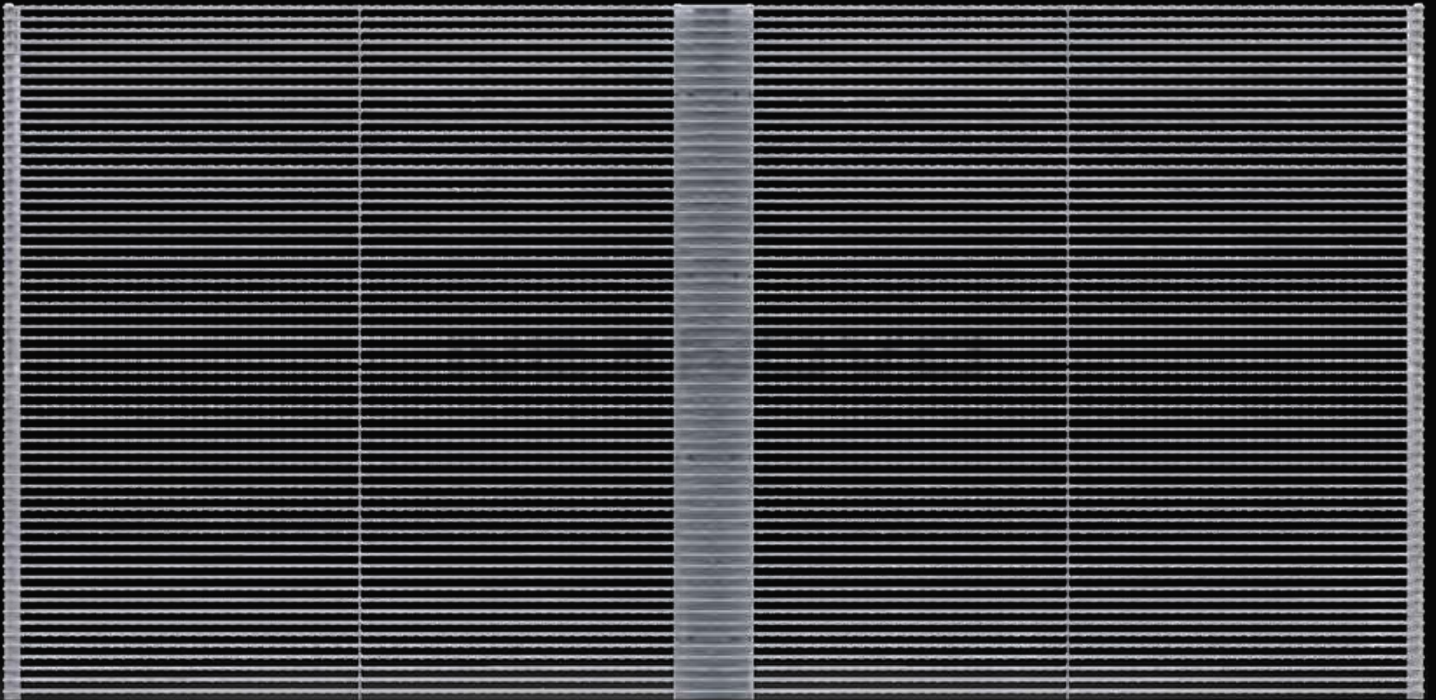
Suspended or standing installations are available.

Each cabinet can be removed or installed individually either from front or the back.



Technical specifications

Model	LED	Brightness (cd/m ²)	Cabinet size (WxH)(mm)	Cabinet Resolution	Transparency	Max. Power (W/m ²)	Avg. Power (W/m ²)
CR 3.9	SMD1515	4500-5000	1000 x 500/1000	256 x 64/128	80%	800W	240W
	SMD1921	5000-6000	1000 x 500/1000	256 x 64/128	74%	800W	240W
CR 8	SMD1515	4500-5000	1000 x 500/1000	128 x 64/128	80%	800W	240W
	SMD1921	5000-6000	1000 x 500/1000	128 x 64/128	74%	800W	240W
	SMD2727	7000-7500	1000 x 500/1000	128 x 64/128	70%	800W	240W
CR 10	SMD1921	4500-5000	1000 x 500/1000	96 x 48/96	82%	800W	240W
	SMD1921	5000-5500	1000 x 500/1000	96 x 48/96	82%	800W	240W
	SMD2727	7000-7500	1000 x 500/1000	96 x 48/96	77%	800W	240W



CJ for indoor

Retail store facade solutions

● Application



Retail store

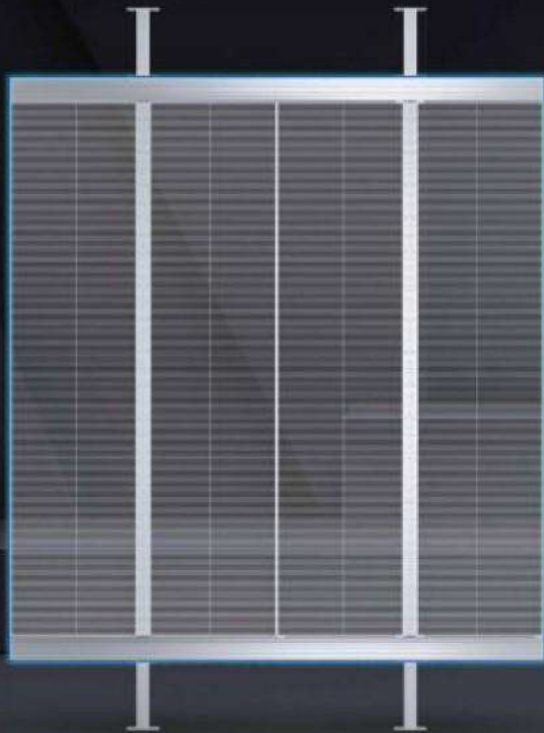


Office



Hotel

CJ series are specially designed for window advertising in Retail stores. Adjusting for the size of your windows, simply select the right modules from different available dimensions then attach them into a single screen, keeping a high resolution without affecting the transparency is key!



Light and thin cabinet,exquisite craft

It gives you a different visual experience



Lightweight
and transparent



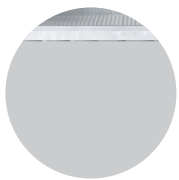
Frameless design



4500~5800nits



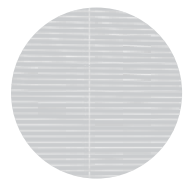
Multiple
of 500 mm



45mm ultra-thin cabinet,
making the display space
more resplendent



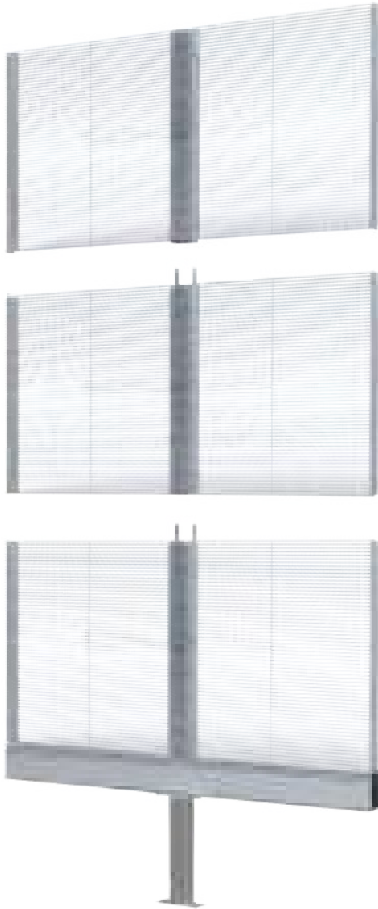
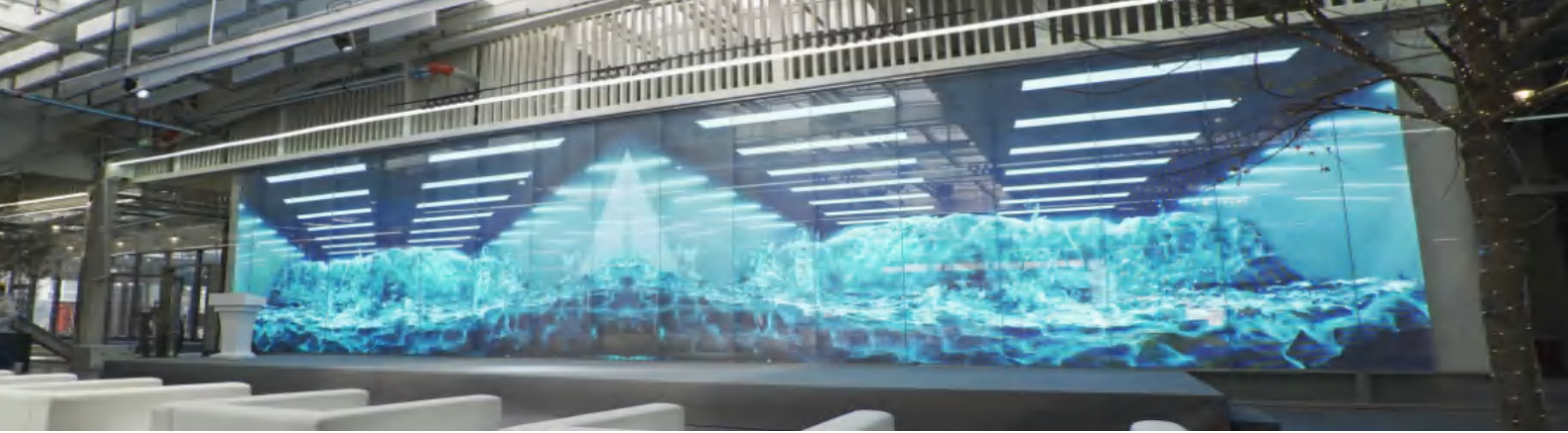
Horizontally frameless design,
keeping high transparency of the display



Customized
SMD1515 LED, giving our products
higher transparency and resolution,
and keeping the original high brightness.



Various display size for
optional,which can be applied to shop
windows of different heights.



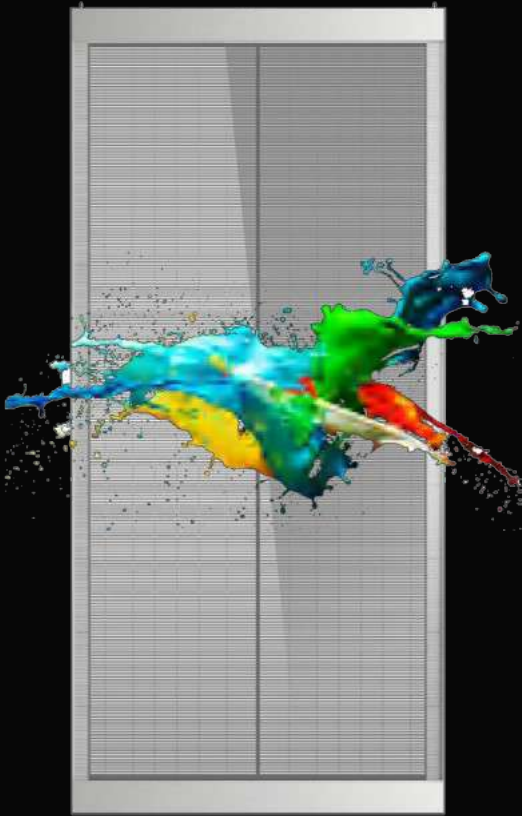
Assembling Cabinet



Easy And Quick Installation

Technical specifications

Model	LED	Resolution	Pixel Pitch	Cabinet size (W x H)(mm)	Cabinet Resolution	Brightness (CD/m ²)	Max.Power (W/m ²)	Avg.Power (W/m ²)	Transparency
CJ2.6	SMD1516 Standard brightness	27456	2.61x5.68	813x500	312x88	4500-5000 Standard brightness	800	240	72%
		41184		813x750	312x132				
		33792		1000x500	384x88				
	SMD1515 High brightness	50688		1000x750	384x132	5300-5800 High brightness			
		38720		1156x500	440x88				
CJ3.3	SMD1516 Standard brightness	17280	3.38x6.94	813x500	240x72	4500-5000 Standard brightness	800	240	78%
		25920		813x750	240x108				
		21312		1000x500	296x72				
	SMD1515 High brightness	31968		1000x750	296x108	5300-5800 High brightness			
		24480		1156x500	340x72				
CJ3.9	SMD1516 Standard brightness	13312	3.91x7.82	813x500	208x64	4500-5000 Standard brightness	800	240	80%
		19968		813x750	208x96				
		16384		1000x500	256x64				
	SMD1515 High brightness	24576		1000x750	256x96	5300-5800 High brightness			
		18944		1156x500	296x64				



CS for indoor

Sliding door and partitions solutions

● Application



Brand stores / Retail flag ship windows



Shopping malls



Sliding doors



Wall partitions

CS series are designed for maximum transparency, high resolution and specific markets. They can be used for high impact retail stores, flagships, shopping malls and more premium locations. Mainly used for window fronts, sliding doors, wall partitions and other market verticals.

Sliding door application



New technology that combines transparent LED display and glass door is widely used in shopping mall, store, hotel, office building and etc.

CS | HIGH TRANSPARENCY STORE FRONT



High Brightness



Consistency



Anti-UV



Long life span

Technical specifications

Model	CS2.6			CS3.3		
LED	SMD1515			SMD1515		
Brightness(CD/m ²)	4500~5000			4500~5000		
Pixel Pitch	2.61x5.68			3.38x6.94		
Transparency	72%			78%		
Max.Power(W/m ²)	800			800		
Avg.Power(W/m ²)	240			240		
Resolution	135168	152064	168960	85248	95904	106560
Display Resolution	384x352	384x396	384x440	296x288	296x324	296x360
Cabinet size(W x H)(mm)	1000x2000	1000x2250	1000x2500	1000x2000	1000x2250	1000x2500

Need any additional information?

If you need any assistance with pricing information, technical support or require any additional information our team would be more than happy to assist.



CONTACT US:

Crystal Display Systems Ltd
Unit 6 M2M Park, Fort Bridgewood,
Maidstone Road, Rochester, Kent
ME1 3DQ
United Kingdom

T: +44 (0) 1634 791600
E: info@crystal-display.com
W: crystal-display.com
www.crystal-digitalsignage.com

**SPECIALIST GLOBAL SUPPLIERS IN INNOVATIVE LCD
DISPLAY SOLUTIONS AND DIGITAL SIGNAGE SOLUTIONS**

*E & OE. Specifications may be subject to change without prior notice

More information can be found at:

<https://crystal-display.com/>