



FULLY OUTDOOR DIGITAL SIGNAGE

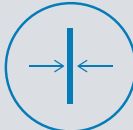
S Series



IP Rating



High Brightness



Ultra Thin



Four Seasons



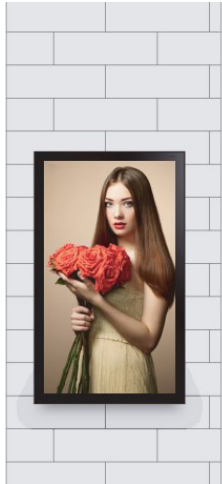
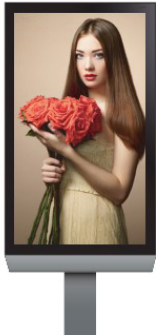
Horizontal & vertical



Tempered Glass

CDS offers a premium outdoor digital signage solution with a high-brightness LCD display, integrated high-temperature LCD, self-cooling design, and AG coating glass for enhanced visibility. This signage is easy to integrate into custom frames and doesn't require additional waterproofing or cooling measures, making it an excellent choice for outdoor advertising needs.

INSTALLATION METHODS



Technical Specifications

LCD Display

Size	65	75
Active Display Area (H x V mm)	1428.48 x 803.52	1649.664 x 927.936
Resolution	3840 x 2160	3840 x 2160
Brightness	2500 nits	3000 nits
Aspect Ratio	16 : 9	
Backlight Adjustment	Automatic (Ambient Light Sensor)	
Viewing Angle	178°/178°	
Backlight Configuration	Direct LED	
Operation Life (hours)	50,000	

Mechanical

Enclosure Material	Galvanized Steel + Aluminum
Finishing	Zinc Powder Coating + Fine Grain Powder Coating
Colour	Black (Ral 9005)
Glass	AG Coating Tempered Glass, Back Painted Pantone Black C

Power

AC Input	110~220VAC±10% , 50 / 60 Hz
Power Consumption	425w 580w

Environment

IP Rating	IP66
Operating Environment	Fully Outdoor
Operating Temperature	-20°C~50°C
Operating Humidity	5%~98%
Operating Altitude	< 2000m

Media

	(HDMI In) Standard
HDMI Input	HDMI (x 1), 480i, 480p, 720p, 1080i , 1080p , 2160p
Analog Audio Output	3.5mm Headphone Jack (x1)

Certificate

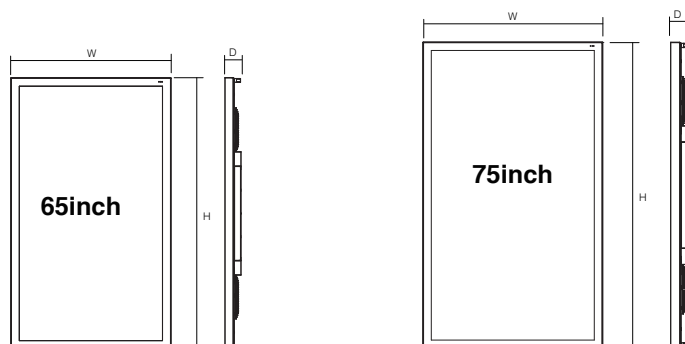
CE-EMC
CE-LVD
ROHS
IP66
IK08

Optional

Touch
Android
Computer
Camera
NFC
RFID
Ultrasonic sensor

Mechanical

W x H x D	902 x 1527 x 104 mm	1027x1748.5x104 mm
Net Weight	112kg	137kg





FULLY OUTDOOR DIGITAL SIGNAGE

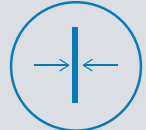
E Series



IP Rating



High Brightness



Ultra Thin



Four Seasons

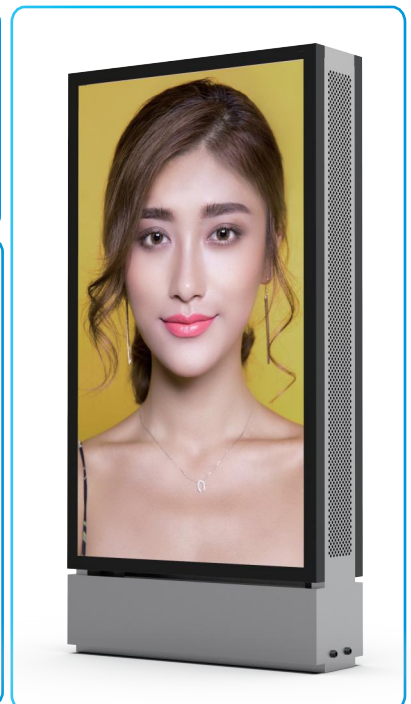


Horizontal & vertical



Tempered Glass

CDS offers a premium outdoor digital signage solution with a high-brightness LCD display, integrated high-temperature LCD, self-cooling design, and AG coating glass for enhanced visibility. This signage is easy to integrate into custom frames and doesn't require additional waterproofing or cooling measures, making it an excellent choice for outdoor advertising needs.



Technical Specifications

LCD Display

Size	32	43	49	55
Active Display Area (H x V mm)	698.4 x 392.85	940.896 x 529.254	1075 x 606.5	1209.6 x 680.4
Resolution	1920 x 1080	1920 x 1080	1920 x 1080	1920 x 1080
Brightness	2000 nits	2500 nits	4000 nits	4500 nits
Aspect Ratio	16 : 9			
Backlight Adjustment	Automatic (Ambient Light Sensor)			
Viewing Angle	178°/178°			
Backlight Configuration	Direct LED			
Operation Life (hours)	50,000			

Certificate

CE-EMC
CE-LVD
ROHS
IP66
IK08

Mechanical

Enclosure Material	Aluminum
Finishing	Fine Grain Powder Coating
Colour	Black (Ral 9005)
Glass	Tempered Glass, Back Painted Pantone Black C

Optional

Touch
Android
Computer
Camera
NFC
RFID
Ultrasonic sensor

Power

AC Input	110 VAC / 220 VAC±10% , 50 to 60 Hz			
Power Consumption	105w	200w	280w	325w

Environment

IP Rating	IP66
Operating Environment	Fully Outdoor
Operating Temperature	-20°C~50°C
Operating Humidity	5%~98%
Operating Altitude	< 2000m

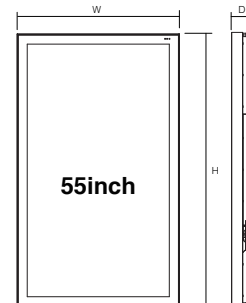
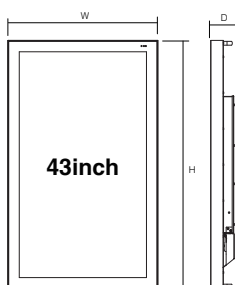
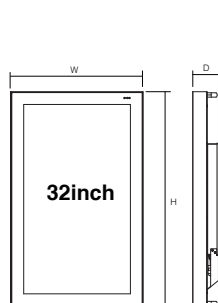
Media

(HDMI In) Standard

HDMI Input	HDMI (x 1), 480i, 480p, 720p, 1080i , 1080p , 2160p
Analog Audio Output	3.5mm Headphone Jack (x1)

Mechanical

W x H x D	795 x 489.5 x 96 mm	1037.5 x 626 x 98 mm	703.5 x 1172 x 98 mm	1306 x 777 x 95.8 mm
Net Weight	22kg	35kg	41kg	50kg





UHD 3840 x 2160

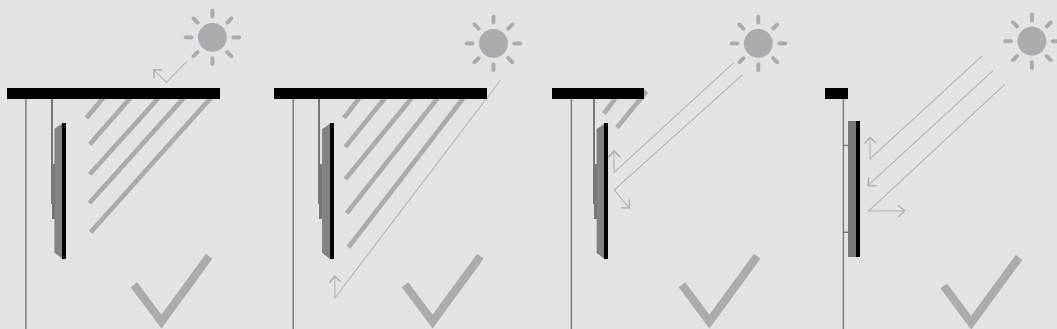


Brightness 2000 nits



IP55 RATING

USAGE SCENARIOS



Technical Specifications

LCD Display

Size	55	65	75
Active Display Area (H x V mm)	1209.6 x 680.4	1428.48 x 803.52	1649.664 x 927.936
Resolution		3840 x 2160	
Brightness		2000 nits	
Aspect Ratio		16 : 9	
Backlight Adjustment		Automatic (Ambient Light Sensor)	
Viewing Angle		178°/178°	
Backlight Configuration		Direct LED	
Operation Life (hours)		50,000	

Mechanical

Enclosure Material	Aluminum
Finishing	Fine Grain Powder Coating
Colour	Black (Ral 9005)
Glass	N / A

Power

AC Input	110 VAC / 220 VAC±10% , 50 to 60 Hz		
Power Consumption	330w	380w	530w

Environment

IP Rating	IP55
Operating Environment	Semi-Outdoor
Operating Temperature	-20°C~50°C
Operating Humidity	5%~98%
Operating Altitude	≤ 2000m

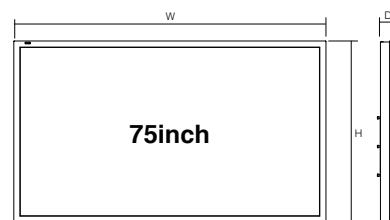
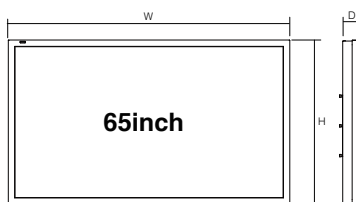
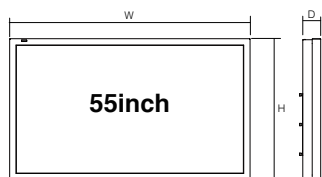
Media


(HDMI In) Standard

HDMI Input	HDMI (x 1), 480i, 480p, 720p, 1080i , 1080p , 2160p
Analog Audio Output	3.5mm Headphone Jack (x1)

Mechanical

W x H x D	1281 x 751.8 x 96.4 mm	W x H x D	1499.9 x 875 x 96.4 mm	W x H x D	1721.7 x 999.7 x 96.4 mm
Net Weight	29kg	Net Weight	40.5kg	Net Weight	54kg





821 Newbridge - Sallins Train Station

NEWBRIDGE TO SALLINS TRAIN STATION

Departs	Stops	Monday - Saturday				Fri-Sat	Sund
Newbridge	Bord Na Mona	05:45	-	11:10	13:45	16:00	
Newbridge	Train Station						

Route 821 - REVISED Timetable

SEMI-OUTDOOR DIGITAL SIGNAGE

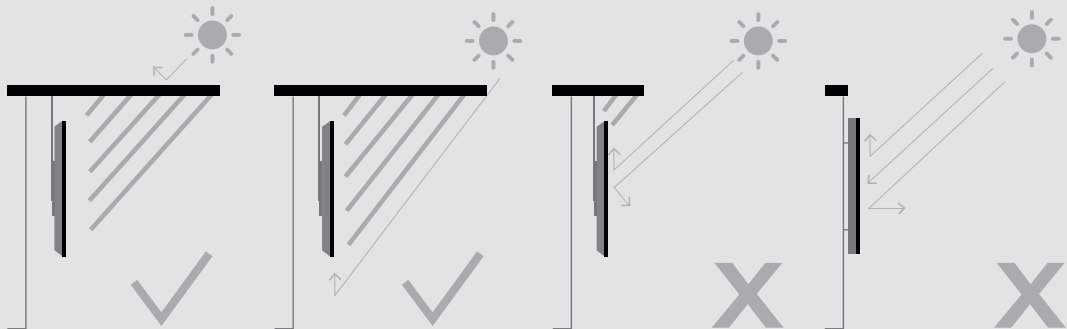
A Series

UHD 3840 x 2160

Brightness 700 nits

IP55 RATING

USAGE SCENARIOS



Technical Specifications

LCD Display

Size	55	65	75
Active Display Area (H x V mm)	1209.6 x 680.4	1428.48 x 803.52	1649.664 x 927.936
Resolution		3840 x 2160	
Brightness		700 nits	
Aspect Ratio		16 : 9	
Backlight Adjustment		Automatic (Ambient Light Sensor)	
Viewing Angle		178°/178°	
Backlight Configuration		LED	
Operation Life (hours)		50,000	

Mechanical

Enclosure Material	Aluminum
Finishing	Fine Grain Powder Coating
Colour	Black (Ral 9005)
Glass	N / A

Power

AC Input	110 VAC / 220 VAC±10% , 50 to 60 Hz		
Power Consumption	190w	275w	360w

Environment

IP Rating	IP55
Operating Environment	Semi-Outdoor
Operating Temperature	-20°C~50°C
Operating Humidity	5%~98%
Operating Altitude	≤ 2000m

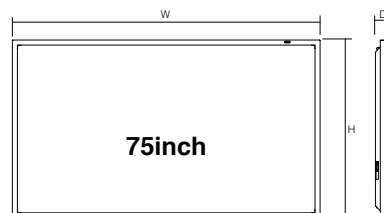
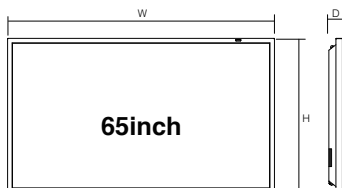
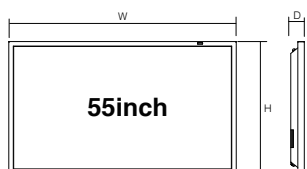
Media

(HDMI In) Standard

HDMI Input	HDMI (x 1), 480i, 480p, 720p, 1080i , 1080p , 2160p
Analog Audio Output	3.5mm Headphone Jack (x1)

Mechanical

W x H x D	1264 x 735 x 75.2 mm	W x H x D	1482.9 x 858.3 x 75.2 mm	W x H x D	1710 x 988 x 85 mm
Net Weight	21.5kg	Net Weight	30kg	Net Weight	41kg



Need any additional information?

If you need any assistance with pricing information, technical support or require any additional information our team would be more than happy to assist



CONTACT US:

Crystal Display Systems Ltd
Unit 6 M2M Park, Fort Bridgewood
Maidstone Road, Rochester,
Kent. ME1 3DQ

T : +44(0) 1634 791600

E : info@crystal-display.com

W : crystal-display.com

**SPECIALIST GLOBAL SUPPLIERS IN INNOVATIVE LCD
DISPLAY, TOUCH AND DIGITAL SIGNAGE SOLUTIONS**

E&OE - Specifications may be subject to change without prior notice