

# SLIMLINE PRO

Premium quality digital signage

**CDS**  
Crystal Display Systems Ltd

Stunning displays that combine tablet-like aesthetics with a robust mild steel enclosure and tempered glass face



## Tabletesque design

With rounded corner, printed border protection glass, and a smooth aesthetic bezel, our premium range gives the giant tablet look an feel. The ultimate in aesthetic design.

## Toughened safety glass

Although the tempered glass face is incredibly tough, in the unlikely event of a breakage the specialised safety glass will shatter into small chunks rather than shards. Not only does this prevent injury, it also protects the LCD panel from damage.

## Simple to update

The screens allows for two methods of update; simple USB update where the media files are uploaded and will play in a looping fashion, or using our free playlist creation software which allows for simple scheduling

- Lightweight Design
- Slender Frame
- Aluminium Surround
- 24/7 Commercial Grade
- Free Flush-fit Wall Mount
- Multiple AV Inputs
- Integrated Android Media Player
- Cloud CMS Option
- Free Playlist Software



# SLIMLINE PRO DIGITAL SIGNAGE

## Specification

Part number	Diagonal	Resolution	Display area	cd/m <sup>2</sup>	Overall size	Weight
CDS-190-PM-X	19"	1366x768	408.6x299.6	350	501x322x38	6.3Kg
CDS-220-PM-X	22"	1920x1080	475x266.4	450	529.6x321x42.3	6.1Kg
CDS-230-PM-X	23"	1920x1080	697.4x391.9	450	757.8x452.3x49.3	11.15Kg
CDS-430-PM-X	43"	1920x1080	941.2x529.4	450	997.6x585.8x50.6	16.75Kg
CDS-500-PM-X	50"	1920x1080	1072.8x603	450	1135.2x665.4x63.2	28.05Kg
CDS-550-PM-X	55"	1920x1080	1209.6x680.4	450	1275x745.8x54.8	30.2Kg

## Panel

<b>Aspect Ratio</b> 16:9	<b>Colour</b> 16.7M	<b>Viewing angle</b> 178°	<b>Contrast ratio</b> 5000:1
-----------------------------	------------------------	------------------------------	---------------------------------

## AV Inputs

<b>Video</b> HDMI, VGA	<b>Audio</b> Audio Socket (3.5mm)
---------------------------	--------------------------------------

## Environmental

<b>Operating Temp</b> 0°C to 50°C	<b>Storage Temp</b> -30°C to 60°C	<b>Operating Humidity</b> 10% to 80%	<b>Storage Humidity</b> 5% to 95%
--------------------------------------	--------------------------------------	---	--------------------------------------

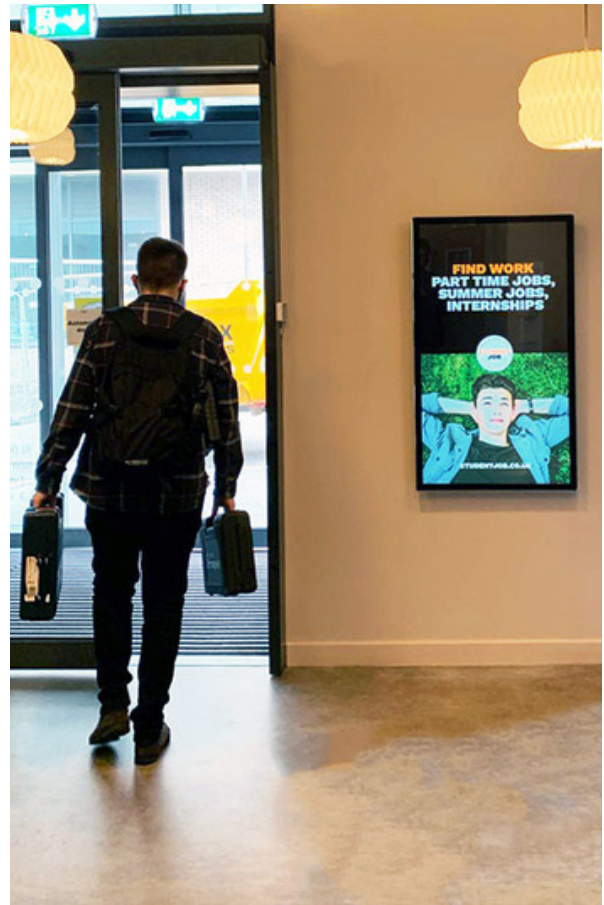
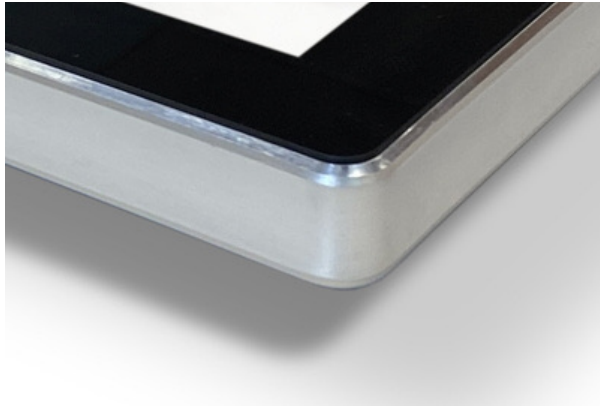
## Computer / media player

<b>Media formats</b> Video (MPG, AVI, MP4, RM, RMVB, TS), Audio (MP3, WMA), Image (JPG, GIF, BMP, PNG)	<b>Media resolution</b> 1920x1080/1080x1920	<b>CPU</b> Quad-Core ARM Cortex A17, 1.6GHz	<b>GPU</b> Quad-Core ARM Mali-T764
<b>RAM</b> DDR3 2GB	<b>Internal storage</b> 8GB eMMC	<b>USB</b> 1 x USB (OTG/HOST), 1 x USB (HOST)	<b>LAN</b> 100M/1000M Ethernet (Network Version Only)
<b>Wi-Fi</b> 802.11b/g/n/ac (Network Version Only)	<b>Bluetooth</b> Bluetooth 4.0	<b>OS</b> Android 7.1	<b>Graphic engine</b> OpenGL ES 1.1/2.0/3.0/3.1, OpenCL 1.1, Renderscript, Direct3D 11.1



# SLIMLINE PRO DIGITAL SIGNAGE

## Example applications





# LARGE FORMAT

Budget friendly 4K  
UHD Digital signage

CDS  
Crystal Display Systems Ltd

Ultra-high definition professional monitors with built-in 4K Android media player



## Remarkable 4K Display

With four times the resolution of Full HD you can achieve a truly immersive experience with an incredible image quality. The 4K resolution is now compatible with the integrated Android Media Player, our CMS software, HDMI channels and third party devices, giving you ultimate flexibility.

## Plug and Play

Plug and Play is the most straightforward way to upload content to the screen. Simply load images and videos on a USB stick, insert in the display, wait for your content to copy over and then remove. Your images and videos will now play in a continuous loop.

## Integrated Android Player

There is an integrated 4K Android media player inside the screen allowing you to upgrade to a network version without needing any additional hardware. You can also install third party Android apps if required.

- Lightweight Design
- 24/7 Commercial Use
- Slim Bezel
- Connect Devices
- ECO-Friendly Power  
Timer
- Built in Speakers



# 4K UHD DIGITAL SIGNAGE

## Specification

Part number	Diagonal	Resolution	Display area	cd/m <sup>2</sup>	Overall size	Weight
CDS-650-PM4K-X	65"	3840x2160	1428.5x803.5	450	1463.2x838.3x76.4	23.54kg
CDS-750-PM4K-X	75"	3840x2160	1650.2x928.3	450	1685.6x963.7x76.4	33.15kg
CDS-860-PM4K-X	86"	3840x2160	1895x1066	450	1930.8x1101.8x76.4	51kg

## Panel

<b>Aspect Ratio</b> 16:9	<b>Colour</b> 16.7M	<b>Viewing angle</b> 178°
-----------------------------	------------------------	------------------------------

## AV Inputs

### Video

HDMI In x3, HDMI Out, USB 2.0, USB 3.0, USB Type-C, Audio Out, SPDIF, RS-232, RF45 in, RJ45 Out

### Speaker type

10W (x2)

## Environmental

<b>Operating temp</b> 0°C to 40°C	<b>Storage temp</b> -20°C to 60°C	<b>Operating Humidity</b> 10% to 90%	<b>Storage Humidity</b> 10% to 90%
--------------------------------------	--------------------------------------	---	---------------------------------------

## Computer / media player

### Media formats

Video  
(MPEG1/MPEG2/MPEG4  
/H.264/WMV/MKV/TS/F  
LV), Audio (MP3, ACC),  
Image  
(JPG/JPEG/BMP/PNG)

### Media resolution

3840x2160

### CPU

A55x4

### Graphic engine

Mali G52MP2

### RAM

4GB

### Hard drive / eMMC

32GB

### USB

USB 3.0 and USB 2.0

### LAN

100M/1000M Ethernet

### Wi-Fi

802.11b/g/n/ac; 2.4G  
and 5G

### Architecture

64-bit

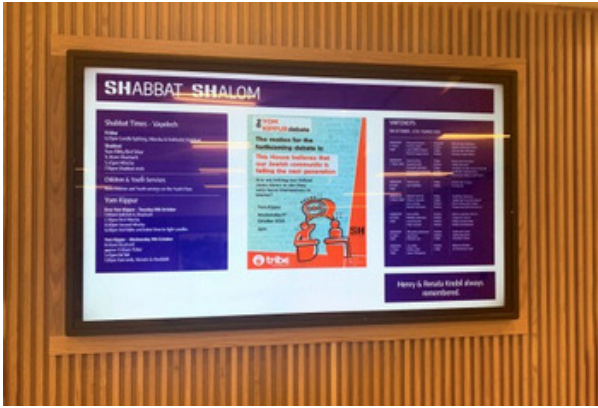
### OS

Android 11



# 4K UHD DIGITAL SIGNAGE

## Example applications



# CORE MONITORS

Budget friendly  
professional monitors

**CDS**  
Crystal Display Systems Ltd

Adaptable 24/7 commercial  
grade AV monitor with simple  
digital signage media player



## IPS Panel

With 450cd/m<sup>2</sup> the IPS panel shines brighter than any domestic television while delivering superior image quality and colour depth at 178° ultra wide viewing angle in both landscape and portrait orientations.

## Narrow Bezel

A narrow bezel helps draw attention to the screens images and not the display for maximum impact messaging. Thanks to the narrow bezel these monitors can also be used as part of a budget friendly video wall.

## Built-in Media Player

As well as having AV inputs, these displays also have a built-in HD media player allowing you to run content from a USB drive. Load your pictures and videos onto a USB memory stick then insert it into the display and the screen will then start playing the pictures and videos in a continuous loop.

- 24/7 Commercial Use

- Built in Speakers

- Power Timer

- LED Backlight

Technology

- Smart Temperature

Control System

“The clear choice for Display Solutions”



[www.crystal-display.com](http://www.crystal-display.com)



# PROFESSIONAL MONITORS

## Specification

Part number	Diagonal	Resolution	Display area	cd/m <sup>2</sup>	Overall size	Weight
CDS-320-PM-X	32"	1920x1080	698.4x392.85	450	716.2x415.05x45.95	8.46kg
CDS-430-PM-X	43"	1920x1080	941.2x529.4	450	963.6x557.9x46.1	11.2Kg
CDS-500-PM-X	50"	1920x1080	1073.78x604	450	1090.4x621.3x56.9	18kg
CDS-550-PM-X	55"	1920x1080	1209.6x680.4	450	1232x708.9x50.4	19.45kg

## Panel

<b>Aspect Ratio</b> 16:9	<b>Colour</b> 16.7M	<b>Viewing angle</b> 178°	<b>Contrast ratio</b> 4000:1
-----------------------------	------------------------	------------------------------	---------------------------------

## AV Inputs

<b>Video</b> HDMI, VGA, BNC	<b>Control</b> RS232	<b>Audio</b> Audio Socket (3.5mm)	<b>Speaker type</b> 5W, 8Ω (x2)
--------------------------------	-------------------------	--------------------------------------	------------------------------------

## Environmental

<b>Operating temp</b> 0°C to 40°C	<b>Storage temp</b> -10°C to 55°C	<b>Operating Humidity</b> 10% to 80%	<b>Storage Humidity</b> 10% to 90%
--------------------------------------	--------------------------------------	---	---------------------------------------

## Media player

### Media formats

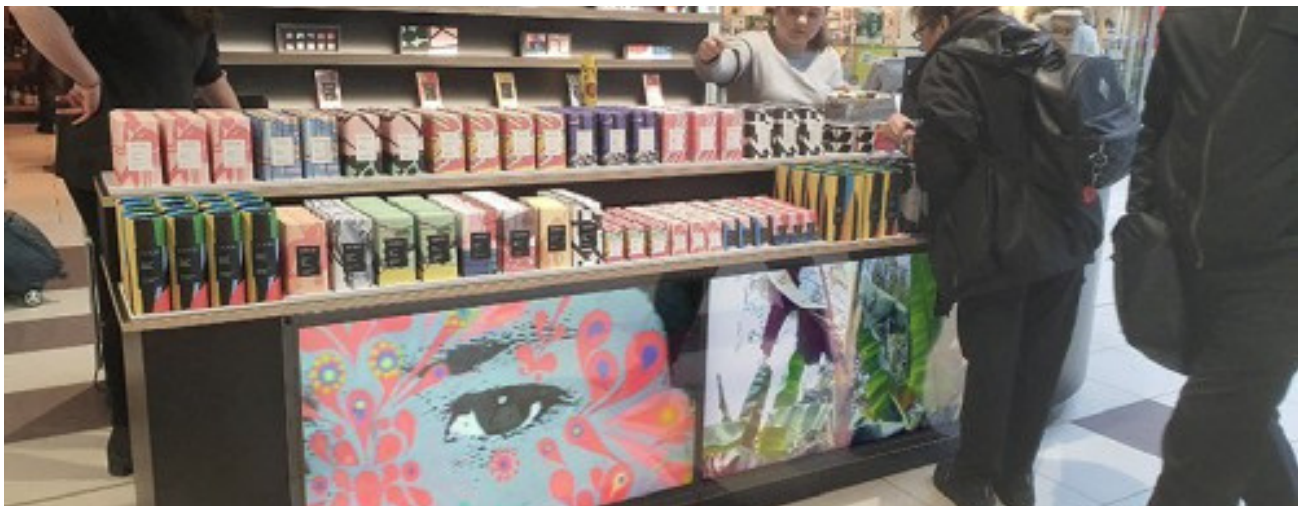
Video (AVI, MP4), Audio (MP3), Image (JPG, BMP)





# PROFESSIONAL MONITORS

## Example applications



# HIGH BRIGHT

In-window digital signage

CDS  
Crystal Display Systems Ltd

Designed for outward-facing window displays in direct sunlight



## 3,500cd/m<sup>2</sup> Direct Sunlight Readable

Designed for shopfront windows, these displays feature commercial grade ultra-high brightness panels (3,500cd/m<sup>2</sup>) that are up to 10 times brighter than domestic televisions. This ensures that content really stands out, even the brightest direct sunlight.

## Ultra Resistant to Blackening Defect (up to 110°C)

Thanks to their special ultra-high brightness panels, these displays can withstand surface temperatures up to 110°C without suffering from any blackening defect. This is crucial for outward-facing window displays, which must contend with exposure to direct sunlight.

## Ambient Light Sensor

These displays include an external ambient light sensor for use when required. This ensures the screen is always operating at the most suitable brightness for its environment. The external nature of this sensor also enables seamless kiosk integration.

- Sleek Thin Bezel
- Stylish Lightweight Enclosure
- Ambient Light Sensor
- viewable Through Polarised Lenses
- Integrated Android Media Player
- Smart Temperature Control System
- 24/7 Commercial Grade



# HIGH BRIGHT DIGITAL SIGNAGE

## Specification

Part number	Diagonal	Resolution	Display area	cd/m <sup>2</sup>	Overall size	Weight
CDS-430-UHB-X	43"	1920x1080	946.3x534.8	3500	966.3x554.8x94.8	18.6kg
CDS-490-UHB-X	49"	1920x1080	1073.8x604	3500	1097.2x627.4x85.3	23.6kg
CDS-550-UHB-X	55"	1920x1080	1209.6x680.4	3500	1234.6x705.4x94.6	28.6kg
CDS-650-UHB-X	65"	3840x2160	1428.5x803.5	3500	1468.6x843.6x85	37.7kg
CDS-750-UHB-X	75"	3840x2160	1649.7x927.9	3500	1689.7x968x85	48.5kg

## Panel

<b>Aspect Ratio</b> 16:9	<b>Colour</b> 16.7M	<b>Viewing angle</b> 178°	<b>Blackening defect free</b> Up to 110°C (230°F)
-----------------------------	------------------------	------------------------------	--

## AV Inputs

<b>Video</b> HDMI, VGA	<b>Audio</b> Audio Socket (3.5mm)	<b>Speaker type</b> 2W, 5Ω (x2)
---------------------------	--------------------------------------	------------------------------------

## Environmental

<b>Surface panel temp</b> 110°C	<b>Operating temp</b> 0°C to 50°C	<b>Storage temp</b> -30°C to 60°C	<b>Operating Humidity</b> 10% to 80%
<b>Storage Humidity</b> 5% to 95%			

## Computer / media player

<b>Media formats</b> Video (MPG, AVI, MP4, RM, RMVB, TS), Audio (MP3, WMA), Image (JPG, GIF, BMP, PNG)	<b>Media resolution</b> 1920x1080/1080x1920	<b>CPU</b> Quad-Core ARM Cortex A17, 1.6GHz	<b>GPU</b> Quad-Core ARM Mali-T764
<b>RAM</b> DDR3 2GB	<b>Internal storage</b> 8GB eMMC	<b>USB</b> 1 x USB (OTG/HOST), 1 x USB (HOST)	<b>LAN</b> 100M/1000M Ethernet (Network Version Only)
<b>Wi-Fi</b> 802.11b/g/n/ac (Network Version Only)	<b>Bluetooth</b> Bluetooth 4.0	<b>OS</b> Android 7.1	<b>Graphic engine</b> OpenGL ES 1.1/2.0/3.0/3.1, OpenCL 1.1, Renderscript, Direct3D 11.1





# HIGH BRIGHT DIGITAL SIGNAGE

## Example applications





# HIGH VIBRANCE

Digital signage  
with impact

**CDS**  
Crystal Display Systems Ltd

Perfect for brightly-lit retail environments or as a budget friendly window display



## 700cd/m<sup>2</sup> Brightness

Designed for brightly lit spaces such as retail stores and shopping centres. Almost three times the brightness level of a standard domestic screen or monitor, making your content really stand out from the crowd.

## Resistant to Blackening

LCD panels exposed to direct sunlight suffer from temporary blackening defect. These displays use a special high brightness panel that can withstand surface temperatures up to 110°C with no blackening defect occurring.

## Plug and Play

Plug and Play is the most straightforward way to upload content to the screen. Simply load images and videos on a USB stick, insert in the display, wait for your content to copy over and then remove. Your images and videos will now play in a continuous loop.

- Sleek Thin Bezel
- Integrated Android Media Player
- IPS Panel
- Optional Network Upgrade
- Designed for Public areas
- Narrow Bezel
- Power Timer
- Scrolling Text
- Multiple Inputs

“The clear choice for Display Solutions”



[www.crystal-display.com](http://www.crystal-display.com)

# HIGH VIBRANCE DIGITAL SIGNAGE

## Specification

Part number	Diagonal	Resolution	Display area	cd/m <sup>2</sup>	Overall size	Weight
CDS-430-HV-X	43"	1920x1080	941.2x529.4	700	963.6x557.9x48.1	11.7kg
CDS-550-HV-X	55"	1920x1080	1209.6x680.4	700	1232x708.9x49.9	15.2kg

## Panel

<b>Aspect Ratio</b> 16:9	<b>Colour</b> 16.7M	<b>Viewing angle</b> 178°
-----------------------------	------------------------	------------------------------

## AV Inputs

<b>Video</b> HDMI, VGA	<b>Audio</b> Audio Socket (3.5mm)	<b>Speaker type</b> 2W, 5Ω (x2)
---------------------------	--------------------------------------	------------------------------------

## Environmental

<b>Operating temp</b> 0°C to 50°C	<b>Storage temp</b> -30°C to 60°C	<b>Operating Humidity</b> 10% to 80%	<b>Storage Humidity</b> 5% to 95%
--------------------------------------	--------------------------------------	---	--------------------------------------

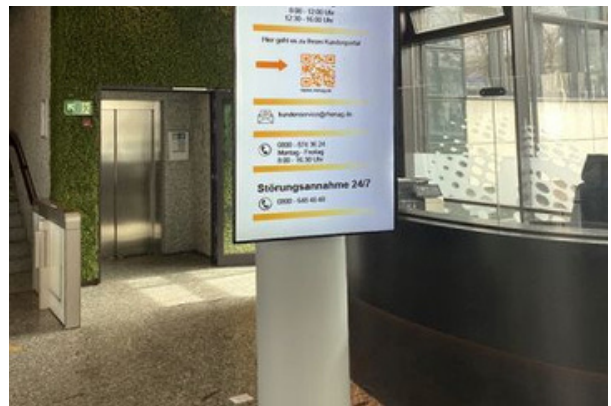
## Computer / media player

<b>Media formats</b> Video (MPG, AVI, MP4, RM, RMVB, TS), Audio (MP3, WMA), Image (JPG, GIF, BMP, PNG)	<b>Media resolution</b> 1920x1080/1080x1920	<b>CPU</b> Quad-Core ARM Cortex A17, 1.6GHz	<b>GPU</b> Quad-Core ARM Mali-T764
<b>RAM</b> DDR3 2GB	<b>Internal storage</b> 8GB eMMC	<b>USB</b> 1 x USB (OTG/HOST), 1 x USB (HOST)	<b>LAN</b> 100M/1000M Ethernet (Network Version Only)
<b>Wi-Fi</b> 802.11b/g/n/ac (Network Version Only)	<b>Bluetooth</b> Bluetooth 4.0	<b>OS</b> Android 7.1	<b>Graphic engine</b> OpenGL ES 1.1/2.0/3.0/3.1, OpenCL 1.1, Renderscript, Direct3D 11.1



# HIGH VIBRANCE DIGITAL SIGNAGE

## Example applications





# TOUCH SCREEN

Interactive  
digital signage

**CDS**  
Crystal Display Systems Ltd

Interactive touch solution with open frame and integrated Windows options available; ideal for kiosk integration or wall-mounted applications



## Open Frame Option

These open frame touch screen monitors are ideal for system integrators. With an underside mounting bracket included at no extra cost, this flexible solution can be mounted into any kiosk, table or cabinet in any direction or orientation. The bracket also features micro-adjustment in all three directions to enable flush-fit surface integration. Alternatively, these monitors can be wall or stand mounted thanks to their complete enclosure.

## 10-Point PCAP Touch

Having up to 10 touch points allows users to perform a variety of touch gestures, including manipulating images and zooming in/out - much like you would with a domestic tablet or smart phone. It also allows multiple users to interact with the screen at the same time.

## Surface Plasma Treatment

A special oleophobic coating makes the glass front more resistant to the oily residue left by fingerprints and improves the smoothness of touch gestures. Unlike other touch screens on the market, this glass is not etched, which vastly enhances the optical clarity.

- Optional Integrated Windows Pc
- Optional Integrated Android Player / CMS
- 24/7 Commercial Use
- 500cd/m<sup>2</sup> IPS Panel
- Giant Tablet Styling
- Budget Friendly Touch Monitor
- Integrated Speakers





# TOUCH SCREEN MONITORS

## Specification

Part number	Diagonal	Resolution	Display area	cd/m <sup>2</sup>	Overall size	Weight
CDS-220-PT-X	22"	1920x1080	476.4x267.8	500	526.2x322.8x60.8	7.9kg
CDS-320-PT-X	32"	1920x1080	697.4x391.7	500	747.4x441.7x62.7	9.9kg
CDS-430-PT-X	43"	1920x1080	940.2x528.1	500	990.2x578.9x62.3	15.4kg
CDS-500-PT-X	50"	1920x1080	1094.8x615.4	500	1145.9x665.4x63	19.4kg
CDS-550-PT-X	55"	1920x1080	1208.6x679.9	500	1262.6x733.9x63	24.2kg

## Panel

<b>Aspect Ratio</b> 16:9	<b>Colour</b> 16.7M	<b>Viewing angle</b> 178°
-----------------------------	------------------------	------------------------------

## Touch

<b>Touch Technology</b> Projective capacitive	<b>Touch points</b> 10	<b>Glass hardness</b> 7H min
--	---------------------------	---------------------------------

## AV Inputs

<b>Video</b> HDMI
----------------------

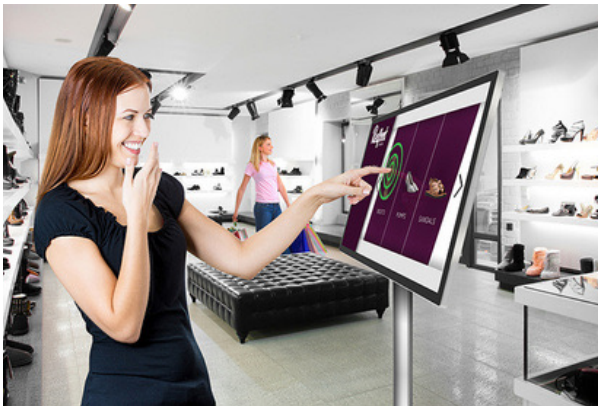
## Environmental

<b>Operating temp</b> 0°C to 40°C	<b>Storage temp</b> -20°C to 60°C	<b>Operating Humidity</b> 10% to 80%	<b>Storage Humidity</b> 5% to 95%
--------------------------------------	--------------------------------------	---	--------------------------------------



# TOUCH SCREEN MONITORS

## Example applications



---

## Need any additional information?

If you need any assistance with pricing information, technical support or require any additional information our team would be more than happy to assist.



### **CONTACT US:**

Crystal Display Systems Ltd  
Unit 6 M2M Park, Fort Bridgewood,  
Maidstone Road, Rochester, Kent  
ME1 3DQ  
United Kingdom

T: +44 (0) 1634 791600

E: [info@crystal-display.com](mailto:info@crystal-display.com)

W: [www.crystal-display.com](http://www.crystal-display.com)

SPECIALIST GLOBAL SUPPLIERS IN INNOVATIVE LCD DISPLAY  
SOLUTIONS AND DIGITAL SIGNAGE SOLUTIONS

---

\*E & OE. Specifications may be subject to change without prior notice

More information can be found at:

[crystal-display.com](http://crystal-display.com)