

# CORE MONITORS

Budget friendly  
professional monitors

**CDS**  
Crystal Display Systems Ltd

Adaptable 24/7 commercial grade AV monitor with simple digital signage media player



## IPS Panel

With 450cd/m<sup>2</sup> the IPS panel shines brighter than any domestic television while delivering superior image quality and colour depth at 178° ultra wide viewing angle in both landscape and portrait orientations.

## Narrow Bezel

A narrow bezel helps draw attention to the screens images and not the display for maximum impact messaging. Thanks to the narrow bezel these monitors can also be used as part of a budget friendly video wall.

## Built-in Media Player

As well as having AV inputs, these displays also have a built-in HD media player allowing you to run content from a USB drive. Load your pictures and videos onto a USB memory stick then insert it into the display and the screen will then start playing the pictures and videos in a continuous loop.

- 24/7 Commercial Use

- Built in Speakers

- Power Timer

- LED Backlight

Technology

- Smart Temperature

Control System

“The clear choice for Display Solutions”



[www.crystal-display.com](http://www.crystal-display.com)

# PROFESSIONAL MONITORS

## Specification

Part number	Diagonal	Resolution	Display area	cd/m <sup>2</sup>	Overall size	Weight
CDS-320-PM-X	32"	1920x1080	698.4x392.85	450	716.2x415.05x45.95	8.46kg
CDS-430-PM-X	43"	1920x1080	941.2x529.4	450	963.6x557.9x46.1	11.2Kg
CDS-500-PM-X	50"	1920x1080	1073.78x604	450	1090.4x621.3x56.9	18kg
CDS-550-PM-X	55"	1920x1080	1209.6x680.4	450	1232x708.9x50.4	19.45kg

## Panel

<b>Aspect Ratio</b> 16:9	<b>Colour</b> 16.7M	<b>Viewing angle</b> 178°	<b>Contrast ratio</b> 4000:1
-----------------------------	------------------------	------------------------------	---------------------------------

## AV Inputs

<b>Video</b> HDMI, VGA, BNC	<b>Control</b> RS232	<b>Audio</b> Audio Socket (3.5mm)	<b>Speaker type</b> 5W, 8Ω (x2)
--------------------------------	-------------------------	--------------------------------------	------------------------------------

## Environmental

<b>Operating temp</b> 0°C to 40°C	<b>Storage temp</b> -10°C to 55°C	<b>Operating Humidity</b> 10% to 80%	<b>Storage Humidity</b> 10% to 90%
--------------------------------------	--------------------------------------	---	---------------------------------------

## Media player

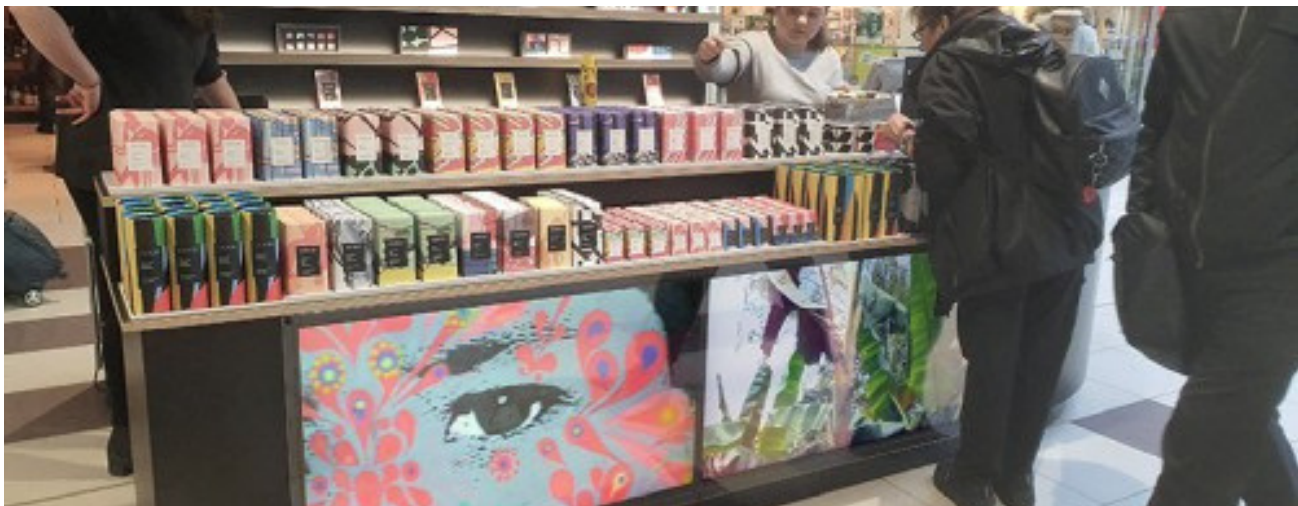
### Media formats

Video (AVI, MP4), Audio (MP3), Image (JPG, BMP)



# PROFESSIONAL MONITORS

## Example applications



---

## Need any additional information?

If you need any assistance with pricing information, technical support or require any additional information our team would be more than happy to assist.



### **CONTACT US:**

Crystal Display Systems Ltd  
Unit 6 M2M Park, Fort Bridgewood,  
Maidstone Road, Rochester, Kent  
ME1 3DQ  
United Kingdom

T: +44 (0) 1634 791600

E: [info@crystal-display.com](mailto:info@crystal-display.com)

W: [www.crystal-display.com](http://www.crystal-display.com)

SPECIALIST GLOBAL SUPPLIERS IN INNOVATIVE LCD DISPLAY  
SOLUTIONS AND DIGITAL SIGNAGE SOLUTIONS

---

\*E & OE. Specifications may be subject to change without prior notice

More information can be found at:

[crystal-display.com](http://crystal-display.com)