

HIGH BRIGHT

In-window digital signage

CDS
Crystal Display Systems Ltd

Designed for outward-facing window displays in direct sunlight



3,500cd/m² Direct Sunlight Readable

Designed for shopfront windows, these displays feature commercial grade ultra-high brightness panels (3,500cd/m²) that are up to 10 times brighter than domestic televisions. This ensures that content really stands out, even the brightest direct sunlight.

Ultra Resistant to Blackening Defect (up to 110°C)

Thanks to their special ultra-high brightness panels, these displays can withstand surface temperatures up to 110°C without suffering from any blackening defect. This is crucial for outward-facing window displays, which must contend with exposure to direct sunlight.

Ambient Light Sensor

These displays include an external ambient light sensor for use when required. This ensures the screen is always operating at the most suitable brightness for its environment. The external nature of this sensor also enables seamless kiosk integration.

- Sleek Thin Bezel
- Stylish Lightweight Enclosure
- Ambient Light Sensor
- viewable Through Polarised Lenses
- Integrated Android Media Player
- Smart Temperature Control System
- 24/7 Commercial Grade



HIGH BRIGHT DIGITAL SIGNAGE

Specification

Part number	Diagonal	Resolution	Display area	cd/m ²	Overall size	Weight
CDS-430-UHB-X	43"	1920x1080	946.3x534.8	3500	966.3x554.8x94.8	18.6kg
CDS-490-UHB-X	49"	1920x1080	1073.8x604	3500	1097.2x627.4x85.3	23.6kg
CDS-550-UHB-X	55"	1920x1080	1209.6x680.4	3500	1234.6x705.4x94.6	28.6kg
CDS-650-UHB-X	65"	3840x2160	1428.5x803.5	3500	1468.6x843.6x85	37.7kg
CDS-750-UHB-X	75"	3840x2160	1649.7x927.9	3500	1689.7x968x85	48.5kg

Panel

Aspect Ratio 16:9	Colour 16.7M	Viewing angle 178°	Blackening defect free Up to 110°C (230°F)
-----------------------------	------------------------	------------------------------	--

AV Inputs

Video HDMI, VGA	Audio Audio Socket (3.5mm)	Speaker type 2W, 5Ω (x2)
---------------------------	--------------------------------------	------------------------------------

Environmental

Surface panel temp 110°C	Operating temp 0°C to 50°C	Storage temp -30°C to 60°C	Operating Humidity 10% to 80%
Storage Humidity 5% to 95%			

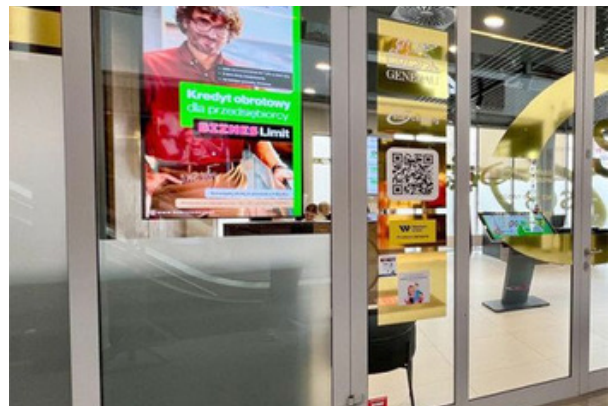
Computer / media player

Media formats Video (MPG, AVI, MP4, RM, RMVB, TS), Audio (MP3, WMA), Image (JPG, GIF, BMP, PNG)	Media resolution 1920x1080/1080x1920	CPU Quad-Core ARM Cortex A17, 1.6GHz	GPU Quad-Core ARM Mali-T764
RAM DDR3 2GB	Internal storage 8GB eMMC	USB 1 x USB (OTG/HOST), 1 x USB (HOST)	LAN 100M/1000M Ethernet (Network Version Only)
Wi-Fi 802.11b/g/n/ac (Network Version Only)	Bluetooth Bluetooth 4.0	OS Android 7.1	Graphic engine OpenGL ES 1.1/2.0/3.0/3.1, OpenCL 1.1, Renderscript, Direct3D 11.1



HIGH BRIGHT DIGITAL SIGNAGE

Example applications



Need any additional information?

If you need any assistance with pricing information, technical support or require any additional information our team would be more than happy to assist.



CONTACT US:

Crystal Display Systems Ltd
Unit 6 M2M Park, Fort Bridgewood,
Maidstone Road, Rochester, Kent
ME1 3DQ
United Kingdom

T: +44 (0) 1634 791600

E: info@crystal-display.com

W: www.crystal-display.com

SPECIALIST GLOBAL SUPPLIERS IN INNOVATIVE LCD DISPLAY
SOLUTIONS AND DIGITAL SIGNAGE SOLUTIONS

*E & OE. Specifications may be subject to change without prior notice

More information can be found at:

crystal-display.com