

# CDS CUSTOMISATION

*"We offer numerous examples of customisation. Let us know your requirements, and our engineers will design a solution tailored to your exact needs."*



RFID Module



NFC Module



QR Code Scanner



Biometrics



WiFi



Camera



Built in battery



Speakers



RFID Module



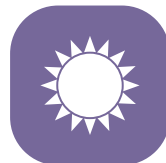
NFC Module



3G/4G/5G Module



GPS Module



High Brightness



IP65/67 Waterproof



AG/AR/AFP Glass



Wide Temperature



Light Sensor



Tempered Glass



EMC immunity



Anti-rust



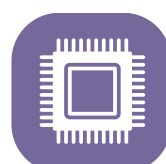
Optical Bonding



5" to 86" Diagonal



Anti-corrosion



CPU / RAM / SSD



I/O interface



Mechanical Design



Operating System



LOGO / Splash Screen



Touch Screen



Mounting Methods

CDS offers fully customised panel PCs and monitors tailored to specific customer needs. Options include bespoke sizes, touch technologies, housing materials, performance levels, and branding. With expertise in hardware and design, CDS ensures each solution meets unique application, environmental, and aesthetic requirements, delivering reliable, high-quality systems for industrial and commercial use.

# CDS CUSTOMISATION



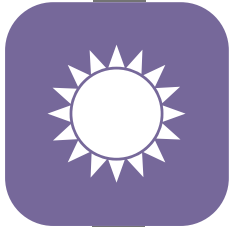
## Optical Bonding

Optical bonding is a process where a protective glass or touchscreen is glued directly to a display using a transparent adhesive. This eliminates the air gap, reducing reflections, improving readability in bright light, enhancing durability, and preventing condensation or dust intrusion, making it ideal for outdoor and industrial applications.



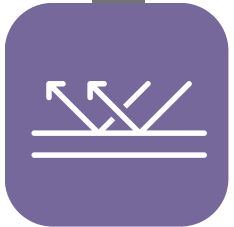
## FULL IP65/IP67 Technology

With an Ingress Protection rating of IP65+, they are completely dust-tight and resistant to water jets from any direction. This makes them ideal for industrial, outdoor, or wash-down areas where durability, reliability, and protection against dust, moisture, and cleaning processes are essential.



## High Brightness

A high bright display is a screen designed to produce much higher brightness than standard displays, typically 1000 nits or more. This makes it easily readable in direct sunlight or very bright environments. They are often used outdoors, in shop windows, kiosks, or anywhere visibility in strong ambient light is critical.



## Glass / Touch surface finish

AG (Anti-Glare) diffuses light to reduce glare, AR (Anti-Reflective) minimizes reflections for clearer viewing, and AFP (Anti-Fingerprint) resists smudges. These glass surface finishes enhance readability, clarity, and cleanliness, improving display performance and user experience in bright or demanding environments while maintaining a durable and easy-to-maintain surface.



## Wide operating temp

High operating temperature monitors withstand extreme heat, maintaining performance and reliability in harsh environments. Built with durable components and efficient cooling, they ensure clear visibility and longevity even in industrial or outdoor settings where standard displays fail. Ideal for demanding applications requiring resilience in elevated temperature conditions.



## Mechanical design

Custom monitor mechanics are crucial to meet specific application needs, ensuring optimal fit, durability, and functionality. Tailored enclosures, mounting options, and materials address unique environmental, space, and usage requirements. This enhances performance, reliability, and integration, making the monitor perfectly suited to its intended industrial, commercial, or specialized setting.



"Get in touch with our engineers today to bring your custom requirements to life!"

## Need any additional information?

If you need any assistance with pricing information, technical support or require any additional information our team would be more than happy to assist



### **CONTACT US:**

Crystal Display Systems Ltd  
Unit 6 M2M Park, Fort Bridgewood  
Maidstone Road, Rochester,  
Kent. ME1 3DQ

T : +44(0) 1634 791600

E : [info@crystal-display.com](mailto:info@crystal-display.com)

W : [crystal-display.com](http://crystal-display.com)

**SPECIALIST GLOBAL SUPPLIERS IN INNOVATIVE LCD  
DISPLAY, TOUCH AND DIGITAL SIGNAGE SOLUTIONS**