

# CRYSTAL DISPLAY SYSTEMS LTD

## HIREL MONITOR RANGE



**10.4"**

Reliable monitoring at all times — in sunlight, rain, complete darkness and extremely cold or hot environment.

# NIGHT VISION

## ALL-WEATHER MONITOR






## DAY/NIGHT DUAL MODE DISPLAY NVIS DEVICE COMPATIBLE

Equipped with an advanced dual-mode backlight system, this monitor allows one-touch switching between daytime mode (up to 1000 nits) or night vision mode (as low as 0.03 nits), ensuring clear visibility in bright environments and compatibility with night vision devices during nighttime operations.

 **1000** nits



 **0.03** nits



HIGH BRIGHT NVIS ~ **ALL WEATHER** ~ GLOVE TOUCH ~ LONG OPERATIONAL LIFE  
OPTICAL BONDING ~ EMC PROTECTION ~ IP65 RATED  
INDUSTRIAL CONNECTORS ~ MOUNTING OPTIONS ~ HIREL APPLICATIONS

**70°C**

## ALL-WEATHER DISPLAY BUILT-IN SMART HEATER

Stable performance in extreme environments of -30°C to +70°C.  
With built-in smart heater, the monitor can operate smoothly in extremely cold environments..

**-30°C**







## HIGH SENSITIVITY SCREEN GLOVE TOUCH

Operable with wet hands or a wide range of gloves, including rubber gloves, latex gloves, leather gloves, PVC gloves and cotton gloves, etc.



HIGH BRIGHT NVIS ~ ALL WEATHER ~ GLOVE TOUCH ~ **LONG OPERATIONAL LIFE**  
OPTICAL BONDING ~ EMC PROTECTION ~ IP65 RATED  
INDUSTRIAL CONNECTORS ~ MOUNTING OPTIONS ~ HIREL APPLICATIONS

LED PANEL LIFE TIME

50000H

High quality industrial-grade LCD screen through multiple tests,  
giving the monitors an exceptional working life.

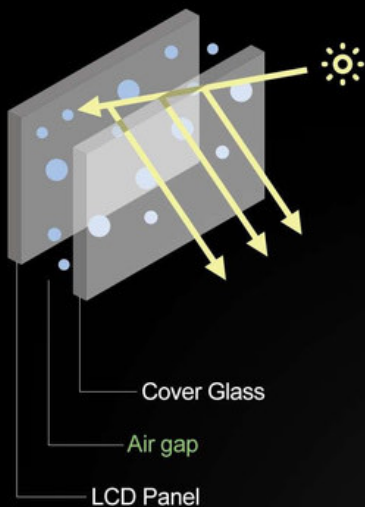




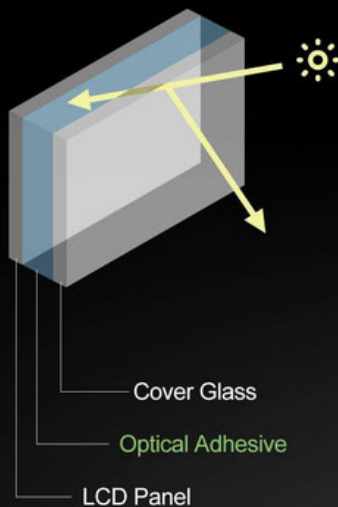
## OPTICAL BONDING

The optical bonding process can remove the air layer between the LCD panel and the glass, ensuring that foreign objects such as dust and moisture will not damage the LCD panel. It can also reduce internal reflections on the screen to improve display transparency.

Without Optical Bonding



With Optical Bonding



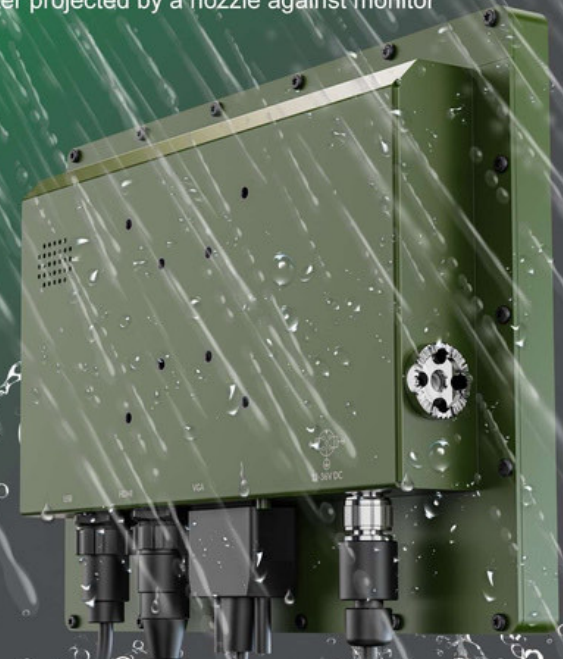
## EMC PROTECTION

EMC-protected design ensures stable performance even in challenging environments.



## IP65 RATING NEMA 4X

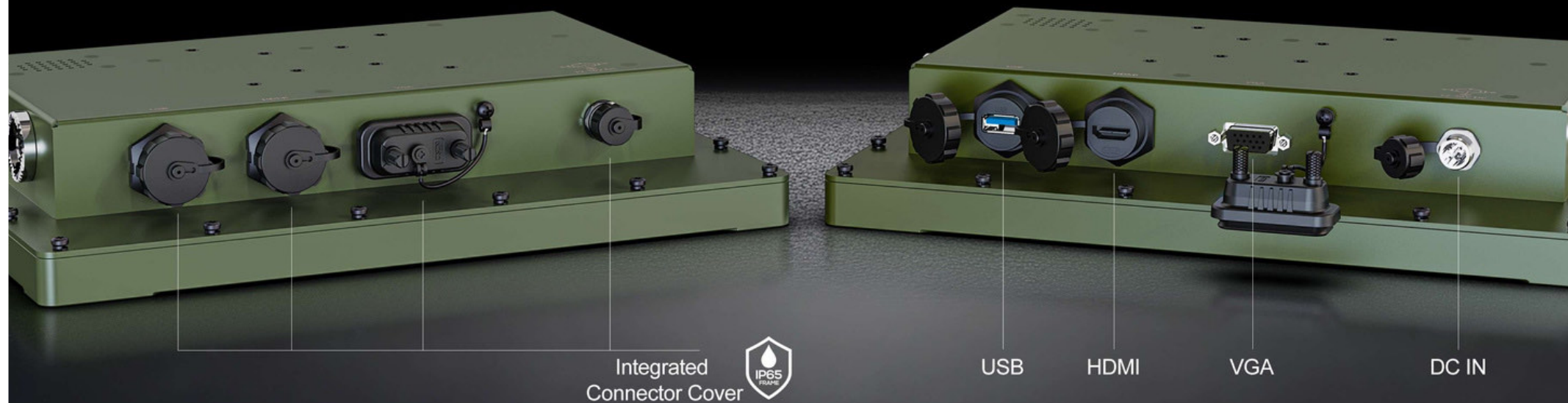
Monitor is designed to carry IP65 rating of protection which offer complete protection against particles, and a good level of protection against water projected by a nozzle against monitor from any directions.





## HDMI / VGA / USB SAFE AND RELIABLE INTERFACE DESIGN

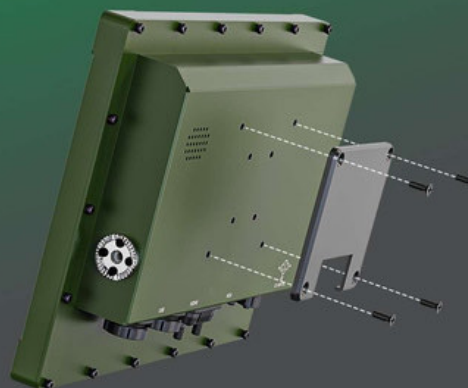
Equipped with a variety of interfaces including power, HDMI, VGA, and USB. All interfaces adopt a sturdy design that is dustproof, waterproof, and anti-falling to ensure reliable connection in harsh environments.



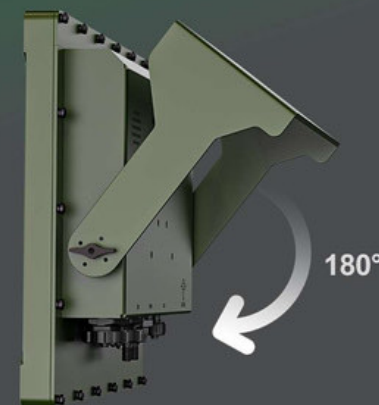




RAM Bracket



VESA 75MM



Gimbal Bracket

## MULTIPLE INSTALLATION METHODS

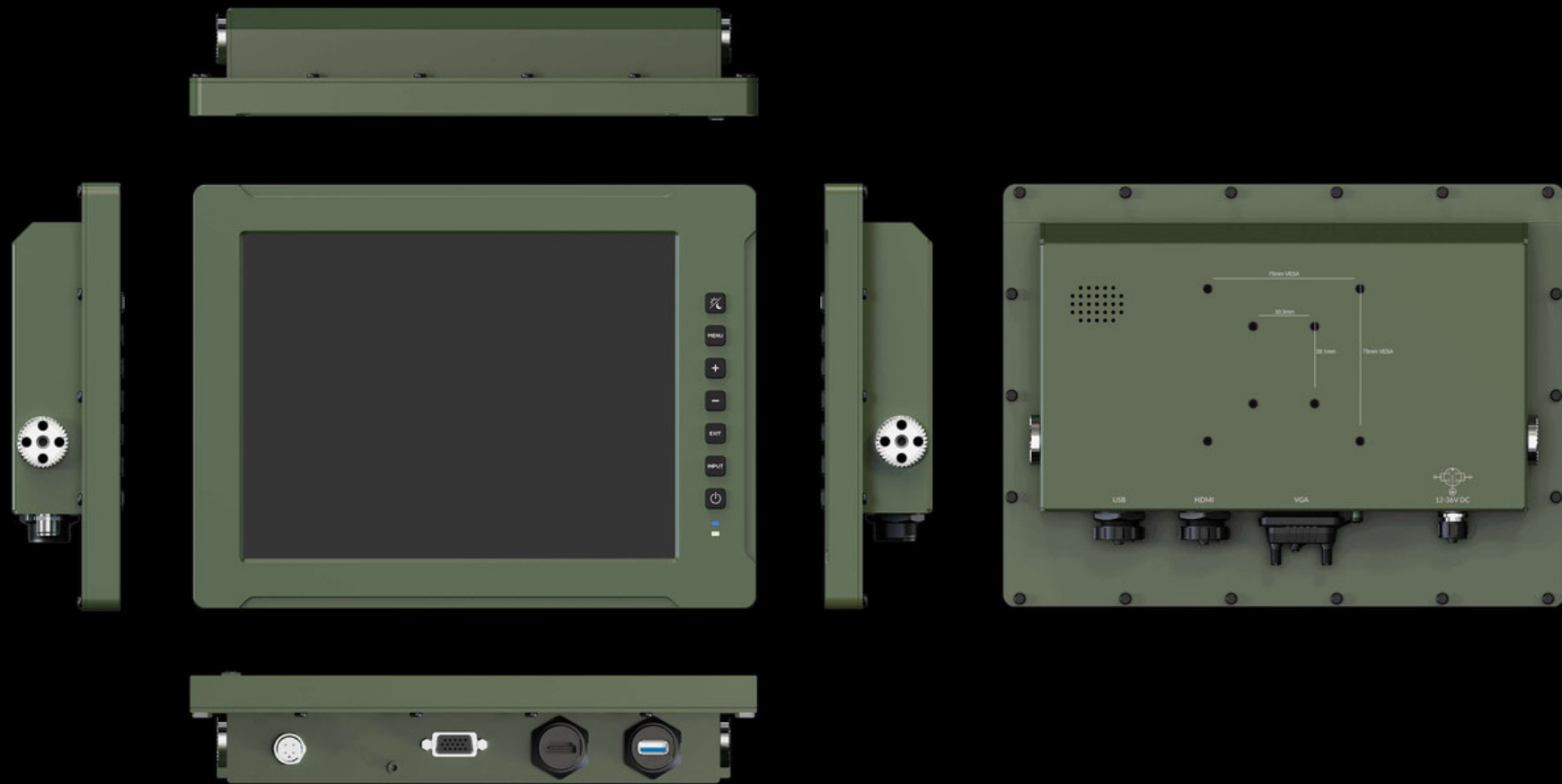
Compatible with VESA, Gimbal bracket and RAM bracket, can be installed on desktop, wall and ceiling.  
Satisfy diverse applications such as aviation, shipbuilding and extreme environments.



Suitable for various applications such as maritime, vehicles, railway, aircraft and extreme industrial environments.



**HIGH BRIGHT NVIS ~ ALL WEATHER ~ GLOVE TOUCH ~ LONG OPERATIONAL  
LIFE OPTICAL BONDING ~ EMC PROTECTION ~ IP65 RATED  
INDUSTRIAL CONNECTORS ~ MOUNTING OPTIONS ~ HIREL APPLICATIONS**



# HIGH BRIGHT NVIS ~ ALL WEATHER ~ GLOVE TOUCH ~ LONG OPERATIONAL LIFE OPTICAL BONDING ~ EMC PROTECTION ~ IP65 RATED INDUSTRIAL CONNECTORS ~ MOUNTING OPTIONS ~ HIREL APPLICATIONS

## SPECIFICATIONS

DISPLAY	Touch Screen	5-wire resistive touch+AG Capacitive touch+AG+AF(Optional) EMI Glass(Customizable)
	Panel	10.4" LCD
	Physical Resolution	1024×768
	Brightness	Day Mode:1000nits NVIS Mode:Dimmable under 0.03nit
	Aspect Ratio	4:3
	Contrast	1000:1
	Viewing Angle	170°/ 170°(H/V)
	LED Panel Life Time	50000 Hours
	HDMI	1
SIGNAL INPUT	VGA+AUDIO	1
	USB	1×USB-A (For touch and upgrade)
SUPPORTED FORMATS	VGA	1080p 24/25/30/50/60, 1080pSF 24/25/30, 1080i 50/60, 720p 50/60...
	HDMI	2160p 24/25/30, 1080p 24/25/30/50/60, 1080i 50/60, 720p 50/60...
AUDIO INPUT	HDMI	2ch 24-bit
	Built-in Speakers	1
POWER	Input Voltage	DC 12-36V
	Power Consumption	≤13W (15V, Normal mode) ≤ 69W (15V, Heating mode)
ENVIRONMENT	Protection Rating	IP65, NAME 4X
	Operating Temperature	-30°C~70°C
	Storage Temperature	-30°C~80°C
OTHER	Dimension(LWD)	276mm × 208mm × 52.5mm
	Weight	2kg (With Gimbal Bracket)

Note: Due to constant effort to improve products and product features, specifications may change without notice.

## ACCESSORIES



Power Connector Cable



VGA+AUDIO Cable



HDMI A/A Cable



USB A/Cable



Gimbal Bracket





## Crystal Display Sytems

@Crystaldisplays • 917 subscribers • 328 videos (ever increasing)  
Welcome to our YouTube Channel! [more...](#)  
crystal-display.com



*"Most of our video demonstrations are filmed in-house by our team. We don't use editing companies to enhance their appearance—they showcase real products, made for real customers, by real people."*

[Home](#)

[More Videos...](#)

[See the CDS Virtual Display Corner....](#)

## For you



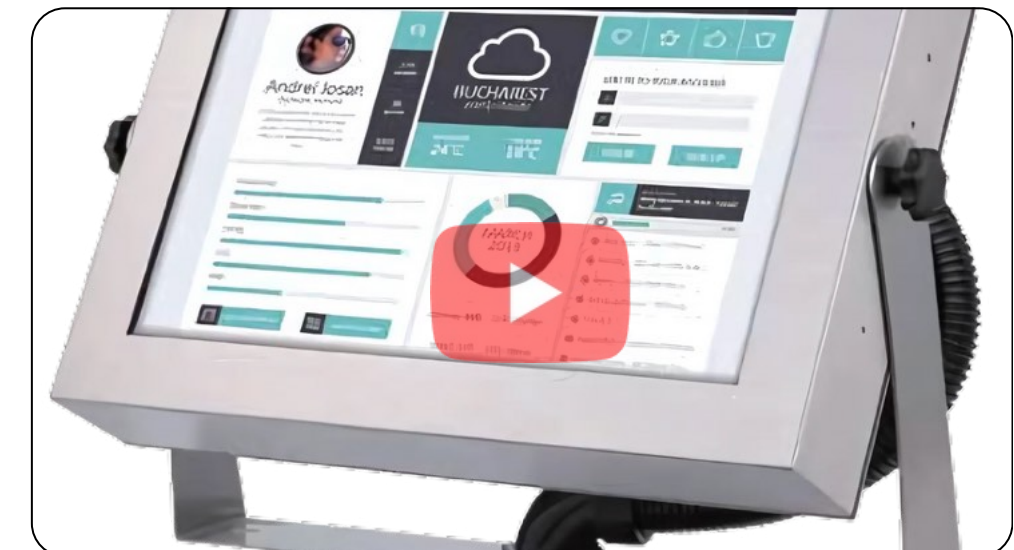
### Quality Built High Bright Panel PC from CDS

CDS offers fully customisable industrial panel PCs tailored to your needs, including processor, memory, storage, and OS options. Our rugged, long-life systems support various touchscreen types and IP ratings, from compact to high-performance models. Ideal for industrial use, all units come with long-term support and supply guarantees.



### Check Out Our New Range of CrystalVUE Industrial monitors

CDS designs and manufactures open frame industrial monitors and touch monitors for diverse applications. Offering both standard and custom solutions, CDS ensures reliable, high-performance displays tailored to specific needs. From kiosks to automation systems, their monitors provide seamless integration and durability in demanding industrial environments.



### CDS Display Corner – 15 inch Yoke Industrial Monitor

Crystal Display Systems walk you through their 15 inch Yoke Industrial Monitor





Need any additional information?

Our team is always available to help you with pricing details, technical support, or any additional information you may need. Please don't hesitate to reach out.



**CONTACT US**



Crystal Display Systems Ltd  
Unit 6 M2M Park, Fort Bridgewood  
Maidstone Road, Rochester,  
Kent. ME1 3DQ

T : +44(0) 1634 791600

E : [info@crystal-display.com](mailto:info@crystal-display.com)

W : [crystal-display.com](http://crystal-display.com)

SPECIALIST GLOBAL SUPPLIERS IN INNOVATIVE LCD  
DISPLAY, TOUCH AND DIGITAL SIGNAGE SOLUTIONS

*E&OE*