

SLIMLINE PRO

Premium quality digital signage



Stunning displays that combine tablet-like aesthetics with a robust mild steel enclosure and tempered glass face



Tabletesque design

With rounded corner, printed border protection glass, and a smooth aesthetic bezel, our premium range gives the giant tablet look an feel. The ultimate in aesthetic design.

Toughened safety glass

Although the tempered glass face is incredibly tough, in the unlikely event of a breakage the specialised safety glass will shatter into small chunks rather than shards. Not only does this prevent injury, it also protects the LCD panel from damage.

Simple to update

The screens allows for two methods of update; simple USB update where the media files are uploaded and will play in a looping fashion, or using our free playlist creation software which allows for simple scheduling

- Lightweight Design
- Slender Frame
- Aluminium Surround
- 24/7 Commercial Grade
- Free Flush-fit Wall Mount
- Multiple AV Inputs
- Integrated Android Media Player
- Cloud CMS Option
- Free Playlist Software



SLIMLINE PRO DIGITAL SIGNAGE

Specification

Part number	Diagonal	Resolution	Display area	cd/m ²	Overall size	Weight
CDS-190-PM-X	19"	1366x768	408.6x299.6	350	501x322x38	6.3Kg
CDS-220-PM-X	22"	1920x1080	475x266.4	450	529.6x321x42.3	6.1Kg
CDS-230-PM-X	23"	1920x1080	697.4x391.9	450	757.8x452.3x49.3	11.15Kg
CDS-430-PM-X	43"	1920x1080	941.2x529.4	450	997.6x585.8x50.6	16.75Kg
CDS-500-PM-X	50"	1920x1080	1072.8x603	450	1135.2x665.4x63.2	28.05Kg
CDS-550-PM-X	55"	1920x1080	1209.6x680.4	450	1275x745.8x54.8	30.2Kg

Panel

Aspect Ratio	Colour	Viewing angle	Contrast ratio
16:9	16.7M	178°	5000:1

AV Inputs

Video	Audio
HDMI, VGA	Audio Socket (3.5mm)

Environmental

Operating Temp	Storage Temp	Operating Humidity	Storage Humidity
0°C to 50°C	-30°C to 60°C	10% to 80%	5% to 95%

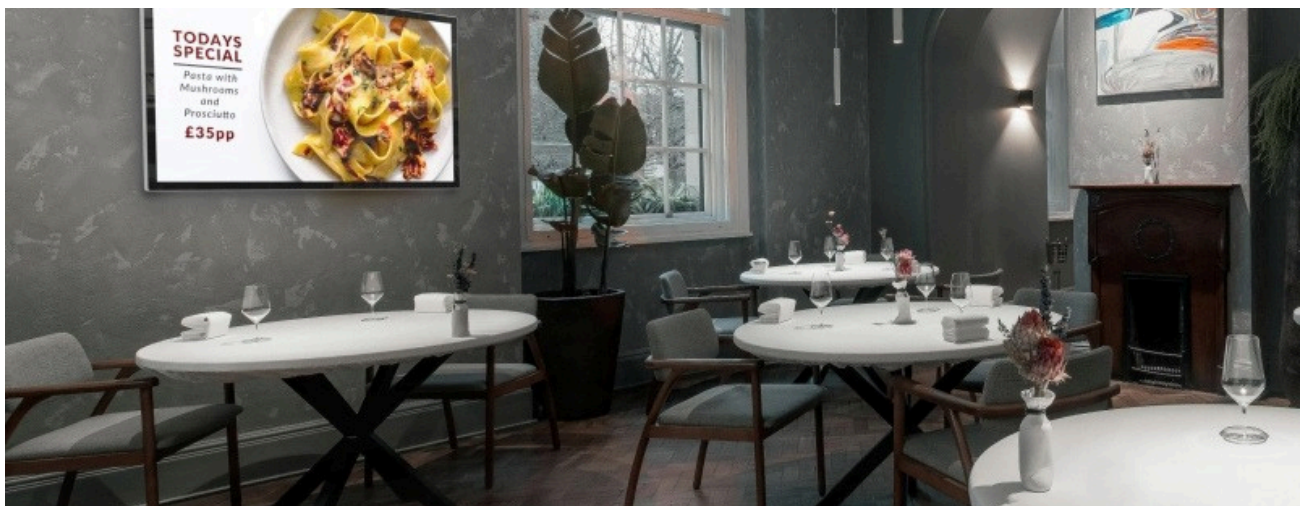
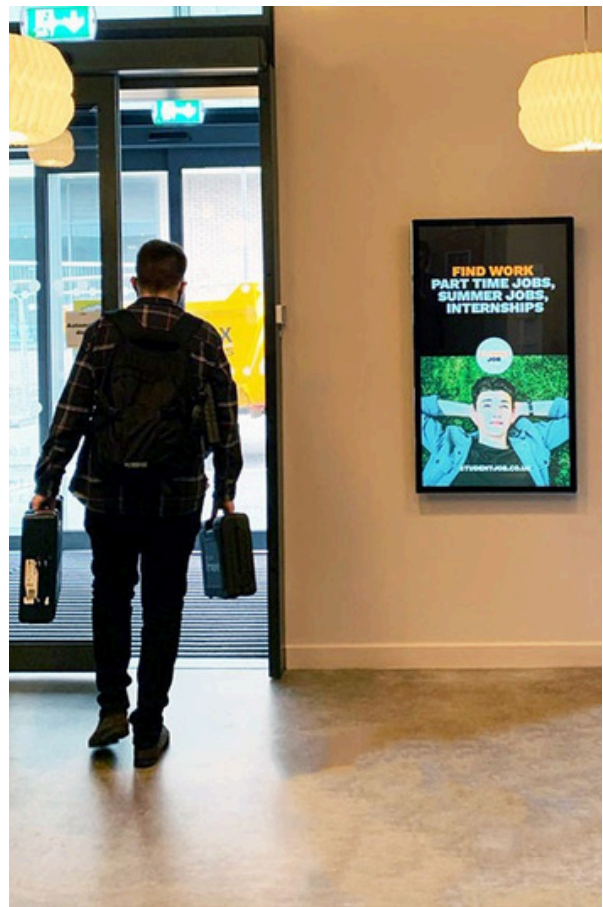
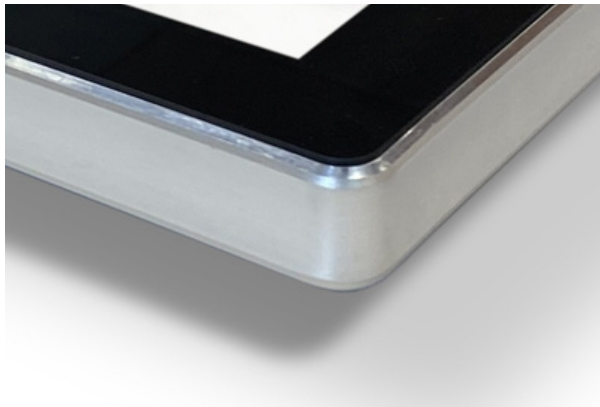
Computer / media player

Media formats	Media resolution	CPU	GPU
Video (MPG, AVI, MP4, RM, RMVB, TS), Audio (MP3, WMA), Image (JPG, GIF, BMP, PNG)	1920x1080/1080x1920	Quad-Core ARM Cortex A17, 1.6GHz	Quad-Core ARM Mali-T764
RAM	Internal storage	USB	LAN
DDR3 2GB	8GB eMMC	1 x USB (OTG/HOST), 1 x USB (HOST)	100M/1000M Ethernet (Network Version Only)
Wi-Fi	Bluetooth	OS	Graphic engine
802.11b/g/n/ac (Network Version Only)	Bluetooth 4.0	Android 7.1	OpenGL ES 1.1/2.0/3.0/3.1, OpenCL 1.1, Renderscript, Direct3D 11.1



SLIMLINE PRO DIGITAL SIGNAGE

Example applications



LARGE FORMAT

**Budget friendly 4K
UHD Digital signage**



Ultra-high definition
professional monitors with
built-in 4K Android media
player



Remarkable 4K Display

With four times the resolution of Full HD you can achieve a truly immersive experience with an incredible image quality. The 4K resolution is now compatible with the integrated Android Media Player, our CMS software, HDMI channels and third party devices, giving you ultimate flexibility.

Plug and Play

Plug and Play is the most straightforward way to upload content to the screen. Simply load images and videos on a USB stick, insert in the display, wait for your content to copy over and then remove. Your images and videos will now play in a continuous loop.

Integrated Android Player

There is an integrated 4K Android media player inside the screen allowing you to upgrade to a network version without needing any additional hardware. You can also install third party Android apps if required.

- Lightweight Design
- 24/7 Commercial Use
- Slim Bezel
- Connect Devices
- ECO-Friendly Power
Timer
- Built in Speakers



4K UHD DIGITAL SIGNAGE

Specification

Part number	Diagonal	Resolution	Display area	cd/m ²	Overall size	Weight
CDS-650-PM4K-X	65"	3840x2160	1428.5x803.5	450	1463.2x838.3x76.4	23.54kg
CDS-750-PM4K-X	75"	3840x2160	1650.2x928.3	450	1685.6x963.7x76.4	33.15kg
CDS-860-PM4K-X	86"	3840x2160	1895x1066	450	1930.8x1101.8x76.4	51kg

Panel

Aspect Ratio	Colour	Viewing angle
16:9	16.7M	178°

AV Inputs

Video

HDMI In x3, HDMI Out, USB 2.0, USB 3.0, USB Type-C, Audio Out, SPDIF, RS-232, RF45 in, RJ45 Out

Speaker type

10W (x2)

Environmental

Operating temp	Storage temp	Operating Humidity	Storage Humidity
0°C to 40°C	-20°C to 60°C	10% to 90%	10% to 90%

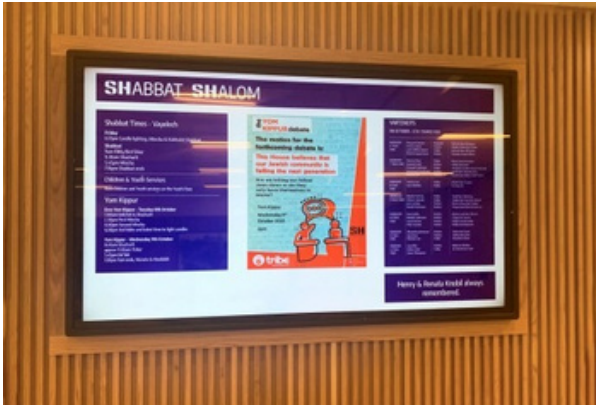
Computer / media player

Media formats	Media resolution	CPU	Graphic engine
Video (MPEG1/MPEG2/MPEG4 /H.264/WMV/MKV/TS/F LV), Audio (MP3, ACC), Image (JPG/JPEG/BMP/PNG)	3840x2160	A55×4	Mali G52MP2
RAM	Hard drive / eMMC	USB	LAN
4GB	32GB	USB 3.0 and USB 2.0	100M/1000M Ethernet
Wi-Fi	Architecture	OS	
802.11b/g/n/ac; 2.4G and 5G	64-bit	Android 11	



4K UHD DIGITAL SIGNAGE

Example applications



CORE MONITORS

Budget friendly
professional monitors



Adaptable 24/7 commercial
grade AV monitor with simple
digital signage media player



IPS Panel

With 450cd/m² the IPS panel shines brighter than any domestic television while delivering superior image quality and colour depth at 178° ultra wide viewing angle in both landscape and portrait orientations.

Narrow Bezel

A narrow bezel helps draw attention to the screens images and not the display for maximum impact messaging. Thanks to the narrow bezel these monitors can also be used as part of a budget friendly video wall.

Built-in Media Player

As well as having AV inputs, these displays also have a built-in HD media player allowing you to run content from a USB drive. Load your pictures and videos onto a USB memory stick then insert it into the display and the screen will then start playing the pictures and videos in a continuous loop.

- 24/7 Commercial Use
- Built in Speakers
- Power Timer
- LED Backlight Technology
- Smart Temperature Control System



PROFESSIONAL MONITORS

Specification

Part number	Diagonal	Resolution	Display area	cd/m ²	Overall size	Weight
CDS-320-PM-X	32"	1920x1080	698.4x392.85	450	716.2x415.05x45.95	8.46kg
CDS-430-PM-X	43"	1920x1080	941.2x529.4	450	963.6x557.9x46.1	11.2Kg
CDS-500-PM-X	50"	1920x1080	1073.78x604	450	1090.4x621.3x56.9	18kg
CDS-550-PM-X	55"	1920x1080	1209.6x680.4	450	1232x708.9x50.4	19.45kg

Panel

Aspect Ratio	Colour	Viewing angle	Contrast ratio
16:9	16.7M	178°	4000:1

AV Inputs

Video	Control	Audio	Speaker type
HDMI, VGA, BNC	RS232	Audio Socket (3.5mm)	5W, 8Ω (x2)

Environmental

Operating temp	Storage temp	Operating Humidity	Storage Humidity
0°C to 40°C	-10°C to 55°C	10% to 80%	10% to 90%

Media player

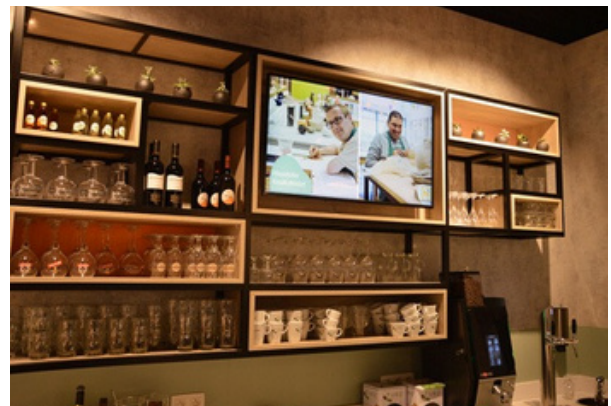
Media formats

Video (AVI, MP4), Audio (MP3), Image (JPG, BMP)



PROFESSIONAL MONITORS

Example applications

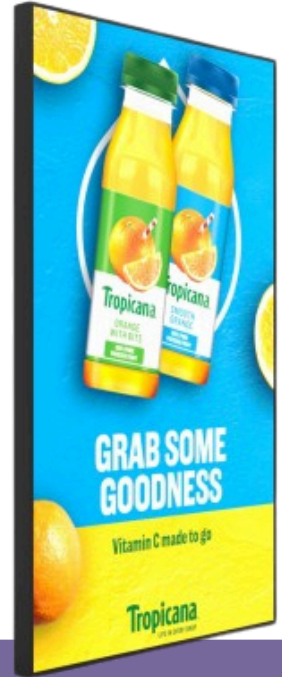


HIGH BRIGHT

In-window digital signage



Designed for outward-facing window displays in direct sunlight



3,500cd/m² Direct Sunlight Readable

Designed for shopfront windows, these displays feature commercial grade ultra-high brightness panels (3,500cd/m²) that are up to 10 times brighter than domestic televisions. This ensures that content really stands out, even the brightest direct sunlight.

Ultra Resistant to Blackening Defect (up to 110°C)

Thanks to their special ultra-high brightness panels, these displays can withstand surface temperatures up to 110°C without suffering from any blackening defect. This is crucial for outward-facing window displays, which must contend with exposure to direct sunlight.

Ambient Light Sensor

These displays include an external ambient light sensor for use when required. This ensures the screen is always operating at the most suitable brightness for its environment. The external nature of this sensor also enables seamless kiosk integration.

- Sleek Thin Bezel
- Stylish Lightweight Enclosure
- Ambient Light Sensor
- viewable Through Polarised Lenses
- Integrated Android Media Player
- Smart Temperature Control System
- 24/7 Commercial Grade



HIGH BRIGHT DIGITAL SIGNAGE

Specification

Part number	Diagonal	Resolution	Display area	cd/m ²	Overall size	Weight
CDS-430-UHB-X	43"	1920x1080	946.3x534.8	3500	966.3x554.8x94.8	18.6kg
CDS-490-UHB-X	49"	1920x1080	1073.8x604	3500	1097.2x627.4x85.3	23.6kg
CDS-550-UHB-X	55"	1920x1080	1209.6x680.4	3500	1234.6x705.4x94.6	28.6kg
CDS-650-UHB-X	65"	3840x2160	1428.5x803.5	3500	1468.6x843.6x85	37.7kg
CDS-750-UHB-X	75"	3840x2160	1649.7x927.9	3500	1689.7x968x85	48.5kg

Panel

Aspect Ratio 16:9	Colour 16.7M	Viewing angle 178°	Blackening defect free Up to 110°C (230°F)
-----------------------------	------------------------	------------------------------	--

AV Inputs

Video HDMI, VGA	Audio Audio Socket (3.5mm)	Speaker type 2W, 5Ω (x2)
---------------------------	--------------------------------------	------------------------------------

Environmental

Surface panel temp 110°C	Operating temp 0°C to 50°C	Storage temp -30°C to 60°C	Operating Humidity 10% to 80%
Storage Humidity 5% to 95%			

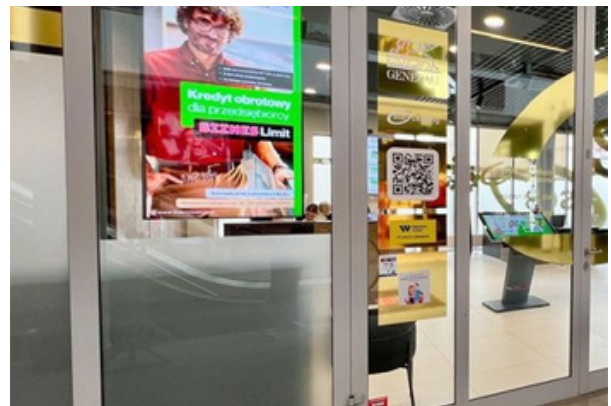
Computer / media player

Media formats Video (MPG, AVI, MP4, RM, RMVB, TS), Audio (MP3, WMA), Image (JPG, GIF, BMP, PNG)	Media resolution 1920x1080/1080x1920	CPU Quad-Core ARM Cortex A17, 1.6GHz	GPU Quad-Core ARM Mali-T764
RAM DDR3 2GB	Internal storage 8GB eMMC	USB 1 x USB (OTG/HOST), 1 x USB (HOST)	LAN 100M/1000M Ethernet (Network Version Only)
Wi-Fi 802.11b/g/n/ac (Network Version Only)	Bluetooth Bluetooth 4.0	OS Android 7.1	Graphic engine OpenGL ES 1.1/2.0/3.0/3.1, OpenCL 1.1, Renderscript, Direct3D 11.1



HIGH BRIGHT DIGITAL SIGNAGE

Example applications



HIGH VIBRANCE

Digital signage
with impact



Perfect for brightly-lit retail environments or as a budget friendly window display



700cd/m² Brightness

Designed for brightly lit spaces such as retail stores and shopping centres. Almost three times the brightness level of a standard domestic screen or monitor, making your content really stand out from the crowd.

Resistant to Blackening

LCD panels exposed to direct sunlight suffer from temporary blackening defect. These displays use a special high brightness panel that can withstand surface temperatures up to 110°C with no blackening defect occurring.

Plug and Play

Plug and Play is the most straightforward way to upload content to the screen. Simply load images and videos on a USB stick, insert in the display, wait for your content to copy over and then remove. Your images and videos will now play in a continuous loop.

- Sleek Thin Bezel
- Integrated Android Media Player
- IPS Panel
- Optional Network Upgrade
- Designed for Public areas
- Narrow Bezel
- Power Timer
- Scrolling Text
- Multiple Inputs



HIGH VIBRANCE DIGITAL SIGNAGE

Specification

Part number	Diagonal	Resolution	Display area	cd/m ²	Overall size	Weight
CDS-430-HV-X	43"	1920x1080	941.2x529.4	700	963.6x557.9x48.1	11.7kg
CDS-550-HV-X	55"	1920x1080	1209.6x680.4	700	1232x708.9x49.9	15.2kg

Panel

Aspect Ratio 16:9	Colour 16.7M	Viewing angle 178°
-----------------------------	------------------------	------------------------------

AV Inputs

Video HDMI, VGA	Audio Audio Socket (3.5mm)	Speaker type 2W, 5Ω (x2)
---------------------------	--------------------------------------	------------------------------------

Environmental

Operating temp 0°C to 50°C	Storage temp -30°C to 60°C	Operating Humidity 10% to 80%	Storage Humidity 5% to 95%
--------------------------------------	--------------------------------------	---	--------------------------------------

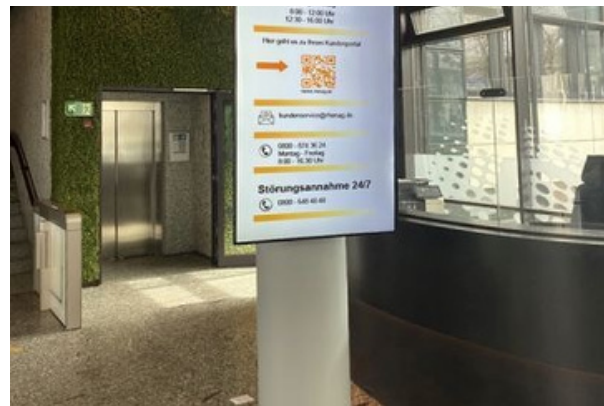
Computer / media player

Media formats Video (MPG, AVI, MP4, RM, RMVB, TS), Audio (MP3, WMA), Image (JPG, GIF, BMP, PNG)	Media resolution 1920x1080/1080x1920	CPU Quad-Core ARM Cortex A17, 1.6GHz	GPU Quad-Core ARM Mali-T764
RAM DDR3 2GB	Internal storage 8GB eMMC	USB 1 x USB (OTG/HOST), 1 x USB (HOST)	LAN 100M/1000M Ethernet (Network Version Only)
Wi-Fi 802.11b/g/n/ac (Network Version Only)	Bluetooth Bluetooth 4.0	OS Android 7.1	Graphic engine OpenGL ES 1.1/2.0/3.0/3.1, OpenCL 1.1, Renderscript, Direct3D 11.1



HIGH VIBRANCE DIGITAL SIGNAGE

Example applications



TOUCH SCREEN

Interactive
digital signage



Interactive touch solution with open frame and integrated Windows options available; ideal for kiosk integration or wall-mounted applications



Open Frame Option

These open frame touch screen monitors are ideal for system integrators. With an underside mounting bracket included at no extra cost, this flexible solution can be mounted into any kiosk, table or cabinet in any direction or orientation. The bracket also features micro-adjustment in all three directions to enable flush-fit surface integration. Alternatively, these monitors can be wall or stand mounted thanks to their complete enclosure.

10-Point PCAP Touch

Having up to 10 touch points allows users to perform a variety of touch gestures, including manipulating images and zooming in/out - much like you would with a domestic tablet or smart phone. It also allows multiple users to interact with the screen at the same time.

Surface Plasma Treatment

A special oleophobic coating makes the glass front more resistant to the oily residue left by fingerprints and improves the smoothness of touch gestures. Unlike other touch screens on the market, this glass is not etched, which vastly enhances the optical clarity.

- Optional Integrated Windows Pc
- Optional Integrated Android Player / CMS
- 24/7 Commercial Use
- 500cd/m² IPS Panel
- Giant Tablet Styling
- Budget Friendly Touch Monitor
- Integrated Speakers



TOUCH SCREEN MONITORS

Specification

Part number	Diagonal	Resolution	Display area	cd/m ²	Overall size	Weight
CDS-220-PT-X	22"	1920x1080	476.4x267.8	500	526.2x322.8x60.8	7.9kg
CDS-320-PT-X	32"	1920x1080	697.4x391.7	500	747.4x441.7x62.7	9.9kg
CDS-430-PT-X	43"	1920x1080	940.2x528.1	500	990.2x578.9x62.3	15.4kg
CDS-500-PT-X	50"	1920x1080	1094.8x615.4	500	1145.9x665.4x63	19.4kg
CDS-550-PT-X	55"	1920x1080	1208.6x679.9	500	1262.6x733.9x63	24.2kg

Panel

Aspect Ratio	Colour	Viewing angle
16:9	16.7M	178°

Touch

Touch Technology	Touch points	Glass hardness
Projective capacitive	10	7H min

AV Inputs

Video

HDMI

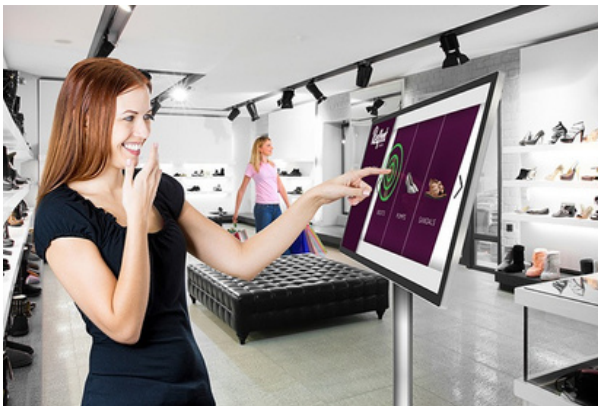
Environmental

Operating temp	Storage temp	Operating Humidity	Storage Humidity
0°C to 40°C	-20°C to 60°C	10% to 80%	5% to 95%



DOUBLE SIDED WINDOW DISPLAYS

Example applications



DOUBLE SIDED

Hanging Double-sided Window Displays

High vibrance Super-Slim Dual Sided Display for Windows with Integrated Ceiling Mounting Solution

Double Sided Window Display

Grab the attention of onlookers with the outward facing, sunlight readable screen. Once your customers are inside the building you can then use the inward facing display to reinforce your message further

Plug and Play

The Double Sided Hanging Displays come with a built in HD Android media player, allowing you to update them using a USB memory stick. Load your pictures and videos onto a USB memory stick then insert it into the display, which will copy the files into its internal flash memory. Once you remove the memory stick the screen will then start playing the pictures and videos in a continuous loop.

700cd/m² brightness

Brightness is paramount when using outward facing screens, these displays use commercial grade high brightness panels (700cd/m²); more than twice the brightness of a standard home TV to allow easy readability in window displays.

CDS
Crystal Display Systems Ltd



- Optional Network Upgrade
- Ultra Resistant to Blackening
- Integrated Ceiling Mount
- Super Slim Design
- Commercial Grade Panel and Components
- Integrated Speakers



DOUBLE SIDED WINDOW DISPLAYS

Specification

Part number	Diagonal	Resolution	Display area	cd/m ²	Overall size	Weight
CDS-430-DS	43"	1920x1080	943.2x531.4	700/700	1178.3x634.6x21.6	16.9kg
CDS-550-DS	55"	1920x1080	1209.6x680.4	700/700	1479.4x817.2x21.6	26.6kg

Panel

Aspect Ratio	Colour	Viewing angle	Blackening Defect Free
16:9	16.7M	178°	Up to 110°C (230°F)

AV Inputs

Video	Audio	Speaker type
HDMI, VGA	Audio Socket (3.5mm)	2W, 5Ω (x2)

Environmental

Operating temp	Storage temp	Operating Humidity	Storage Humidity
0°C to 40°C	-20°C to 60°C	10% to 90%	0% to 95%

Computer / media player

Media formats	Media resolution	CPU	GPU
Video (MPG, AVI, MP4, RM, RMVB, TS), Audio (MP3, WMA), Image (JPG, GIF, BMP, PNG)	1920x1080/1080x1920	Quad-Core ARM Cortex A17, 1.6GHz	Quad-Core ARM Mali-T760 MP4 @600Mhz
RAM	Internal storage	USB	LAN
DDR3 2GB	8GB NAND	USB2.0 HOST (x2)	100M/1000M Ethernet (Network Version Only)
Wi-Fi	OS	Graphic engine	
802.11b/g/n (Network Version Only)	Android 5.1.1	OpenGL ES 1.1/2.0/3.0/3.1, OpenCL 1.1, Renderscript, Direct3D 11.1	

NOTE - To achieve different content on each side, the network upgrade with CMS is required



DOUBLE SIDED WINDOW DISPLAYS

Example applications



HB DOUBLE SIDED

ULTRA HIGH BRIGHTNESS HANGING
DOUBLE-SIDED DISPLAYS



Dual-sided Digital Signage
Window Displays
3,500cd/m² Outward-Facing
1,000cd/m² Inward-Facing



Perfect for Window Displays

With a 3,500cd/m² outward-facing screen to combat direct sunlight and a 1,000cd/m² inward-facing screen to combat brightly-lit indoor spaces, these dual-sided displays are designed for shopfront windows. On top of this, they are also ultra resistant to blackening defect up to 110°C.

Different Content on Each Side

When using our user-friendly online CMS software, you can really capitalise on the duality of these displays by broadcasting different content on each side. Tailor your messaging to people inside and outside the building for maximum effectiveness.

Smart Temperature Control

The responsive internal airflow system keeps the panel and other internal components at optimum working temperature. This ensures a long and reliable life for your screen, even when used continuously in outward-facing windows.

- Lightweight Slim Enclosure
- Integrated Android Media Player
- Ultra Resistant to Blackening
- Accessible Ports
- Freestanding Option Available



ULTRA HB DOUBLE SIDED DISPLAYS

Specification

Part number	Diagonal	Resolution	Display area	cd/m ²	Overall size	Weight
CDS-490-DS-HB	49"	1920x1080	1073.8x604	3500/1000	1599.9x708x80	28.4kg
CDS-550-DS-HB	55"	1920x1080	1209.6x680.4	3500/1000	1804x786x80	48kg

Panel

Aspect Ratio	Colour	Viewing angle	Blackening Defect Free
16:9	16.7M	178°	Up to 110°C (230°F)

AV Inputs

Video	Audio	Speaker type
HDMI	Audio Socket (3.5mm)	8W, 8Ω (x2)

Environmental

Operating temp	Storage temp	Operating Humidity	Storage Humidity
0°C to 40°C	-20°C to 60°C	10% to 80%	5% to 95%

Surface Panel Temperature
110°C

Computer / media player

Media formats Video (MPG, AVI, MP4, RM, RMVB, TS), Audio (MP3, WMA), Image (JPG, GIF, BMP, PNG)	Media resolution 1920x1080/1080x1920	CPU Quad-Core ARM Cortex A17, 1.6GHz	GPU Quad-Core ARM Mali-T764
RAM DDR3 2GB	Internal storage 8GB eMMC	USB 1 x USB (OTG/HOST), 4 x USB (HOST)	LAN 100M/1000M Ethernet (Network Version Only)
Wi-Fi 802.11b/g/n/ac (Network Version Only)	OS Android 7.1	Graphic engine OpenGL ES 1.1/2.0/3.0/3.1, OpenCL 1.1, Renderscript, Direct3D 11.1	

NOTE - To achieve different content on each side, the network upgrade with CMS is required



ULTRA HB DOUBLE SIDED DISPLAYS

Example applications



Need any additional information?

If you need any assistance with pricing information, technical support or require any additional information our team would be more than happy to assist.



CONTACT US:

Crystal Display Systems Ltd
Unit 6 M2M Park, Fort Bridgewood,
Maidstone Road, Rochester, Kent
ME1 3DQ
United Kingdom

T: +44 (0) 1634 791600

E: info@crystal-display.com

W: www.crystal-display.com

**SPECIALIST GLOBAL SUPPLIERS IN INNOVATIVE LCD DISPLAY
SOLUTIONS AND DIGITAL SIGNAGE SOLUTIONS**

*E & OE. Specifications may be subject to change without prior notice

More information can be found at:
crystal-display.com