

CDS

Crystal Display Systems Ltd

# Company Product Presentation 2026

*"The Clear Choice For  
Display Solutions, touchscreens, embedded  
computing products and digital signage"*





# Contents

- Industrial LCD Panels
- Standard & Bespoke Industrial Monitors
- Panel PCs
- Gaming Monitors, incl. halo & curved
- Transparent Display Technology – LCD, OLED, & LED
- Special Shaped Displays – Stretched, Square, & Circular
- Glory Star Professional Tablet Solutions
- IP65 & IP66 Monitors
- Dual Sided Window Displays & High Brightness Monitors
- LEDVUE – Fine Pitch LED
- SoloVUE – Privacy Monitors
- High Reliability Giada Media Players
- Standard Digital Signage Range
- Value Added Services and Enhancement Capabilities
- Our Customers & Testimonials
- Crystal Display Systems – About us!
- Our Contact Details

*"We believe this is the most comprehensive and varied Displays product brochure currently available." Chris Bartram, CEO and Managing Director*

# Widest Range Of Industrial LCD TFT Display and OLED Solutions



Small Format TFTs



TFTs with PCAP Touch



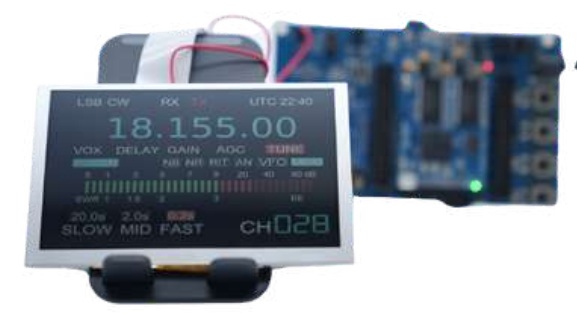
High Bright TFTs



Small HDMI Modules



Bar Type LCD Panels



Transflective TFT Panels



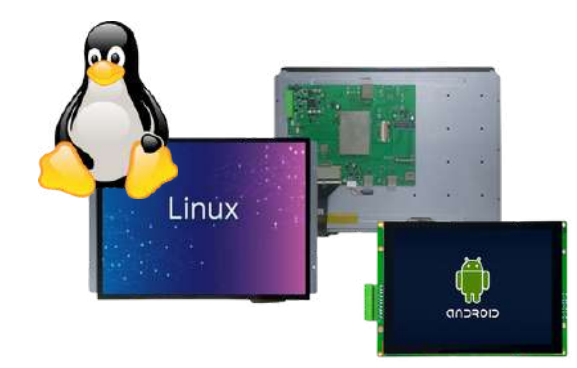
Round TFT Panels



Square TFT Panels



Wide Temp LCD Panels



Linux and Android



Full Array Local Dimming (FALD) Displays



Small Industrial OLEDs



Embedded SMART Displays



Monochrome Displays



Printed E-Paper Solutions

# Standard Open / Closed Framed LCD Monitors

CrystalVUE



- Industrial monitors from 4.3" to 85"
- Including LCD displays, touch screen panels, outdoor displays, and digital signage
- Multiple mounting options include Chassis, Open Frame, Panel Mount, and Rack Mount
- Other upgrades include IP65/66/67, Stainless Steel, Wide Temperature, High Brightness, and Multi-Touch models
- Glass Cover Surface Treatments: AG (Anti-Glare), AF (Anti-Fingerprint), AR (Anti-Reflection)
- Display Ports: VGA, DVI, HDMI, DP, and more
- Fully bespoke customised design capability

Link to  
website



Link to our custom  
monitor builder page



***"YOU (or we) design it, and WE build it"***



# Industrial All-In-One (AIO) Industrial Panel PC Series

Our range of Industrial Panel PCs, HI-REL Industrial Panel PCs, Industrial Boxed PC's and Bespoke Panel PCs are designed for rugged, retail, industrial as well as outdoor markets and applications.



## Key Features of the entire range

- Optimum Performance
- Fanless designs
- High brightness and wide temp options
- Rugged design
- IP65 or IP66 front bezel and optical bonding
- Front or rear mount
- Short lead times and NO MOQs
- Expansion options and flexible OS support
- Bespoke options
- Competitive pricing
- Long term availability
- Suitable for many applications
- High reliability speciality

Link to website



EmbeddedVUE

***“One product = one solution”***



# Casino Gaming & Amusement Touch Monitor Range

*"Bring your casino games to life"* CasinoVUE

CDS is a prominent player in the gaming display industry, specialising in **winning number displays** for casinos, lottery machines, sports betting machines, maximum bet displays, and gaming machines across Europe and the U.S.

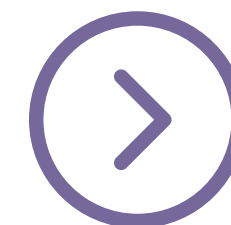
Our company is recognised for our unparalleled display performance and commitment to providing reliable solutions. CDS stands out by offering a range of excellent gaming and casino monitors, including square monitors, **button decks**, floating Halo monitors, circle monitors and curved LCDs.

Our solutions provide versatility and compatibility, offering alternatives to the limited product range of larger multinational competitors. CDS emphasises collaboration to tailor solutions to the specific needs of our clients.

Link to website



Link to halo page



Link to curved page





# Transparent LCD Technology

# ClearVUE

*"Are you looking for that WOW factor?"*

## Transparent LCD Displays

- Panels and kits from 12.1" ~ 86"
- PCAP & IR touch overlays
- Portrait and landscape
- Custom solutions including frame touch and boards

[Link to website](#)



## Transparent LCD Showcase Boxes

- From 21.5" to 43"
- Optional touch
- Finished solutions with LED lighting, just connect to PC or media player
- Custom options available



[Link to website](#)



## CircleVUE Transparent LED

- Up to 3m diameter display size
- Ultra-narrow aluminium alloy frame
- High precision led modules
- Easy maintenance
- 2,000 ~ 2,500 nits brightness

[Link to website](#)



***Bespoke options available, contact us!***

# Transparent Technology Continued – OLED & LED

## Transparent OLED Displays

- High-end premium solution in 30"/55"/75" modules
- Ruggedised with optically bonded front glass
- 38% transparency and 400 nits brightness
- PCAP & IR touch options
- Portrait and landscape
- Full kit or half kit

[Link to website](#)



[Link to website](#)



## Transparent MicroLED Displays

- Ultra Bright Display
- Longevity you can trust
- High Transparency
- Modular Construction

This is a prototype from AUO, the industry pioneer and *first to develop MicroLED transparency tech* – and it's already changing the game.



[Link to website](#)



## Transparent LED Displays

- Amazing impact for store fronts and shop windows
- Enhance spaces for the ultimate advertising platform without blocking the natural light
- Modular design which can be built up to any size, up to 7,500 nits brightness
- Transparency up to 85%
- Integrated all-in-one driver LED chip & IC
- Custom options available

***"The displays you can see through and see the quality"***



# Special Shaped Displays

## Stretched LCD Monitors StretchedVUE

Wide range of stretched LCD monitors / cut displays / bar type displays from 6.2" to 77.5" up to 4K resolution. High bright and touch interactive options, and enclosed monitors or panels and kits for integration. Unique aspect ratios to catch viewers attention and squeeze into tighter spaces.

[Link to website](#)



## SquareVUE

### Square LCD Monitors

- 15.7", 22", 33.2", 35.2", 35.6", 42.1" and 59.8" sizes
- versatile inputs
- durable & robust
- touch options

[Link to website](#)



*"What shape do you or your customers want?"*

## CircleVUE

### Circular LCD Monitors

- 23.6" true circle
- up to 1,000 nits
- AR / AG glass options
- optical bonding and IP rated options
- custom options available

[Link to website](#)





# Glorystar Professional Tablet & Ai Solutions



*"Power at your fingertips"*



[Link to website](#)

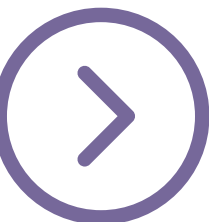


## Nebula Kiosk Tablet Range

- Comprehensive self-service kiosk with **Android**
- Commercial grade and powerful processing power
- Range of optional add-on peripherals, offering flexibility in its usage and applications
- Three versions available, all in 10", 15.6" or 21.5"
- Nebula Generation 2 Quad Core ARM Cortex A55@2.0GHz
- And Bonus 10" Nebula Glow with HALO LED surround
- Nebula AI Series



[Link to website](#)



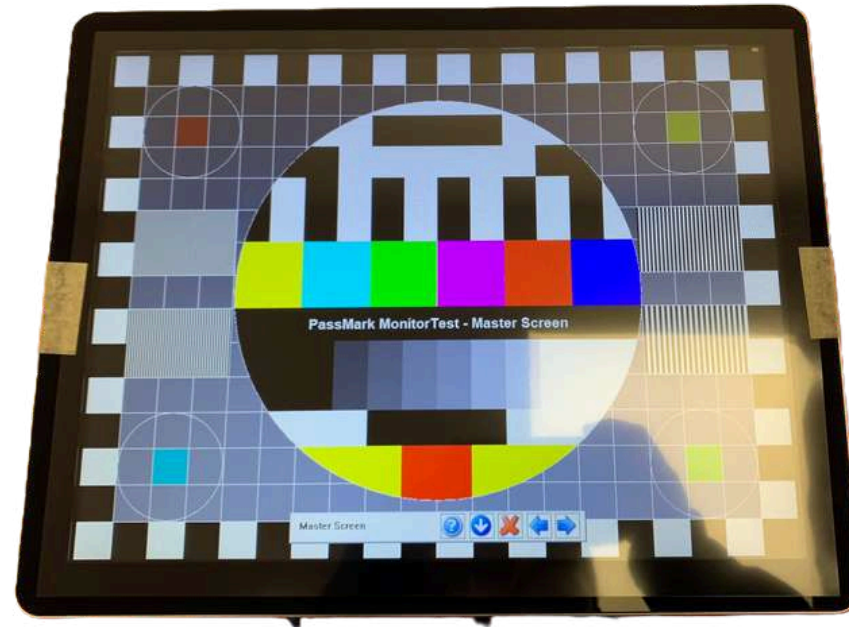
## Ultron Windows Touchscreen Computer

- Similar to the Nebula but with a **Windows** based platform
- Also available in 10", 15.6", and 21.5" models
- Ultron is pre-installed with Windows 10IoT with Win32 apps and optional license. Optional Windows 10 or Linux 32/64 bit
- CPU options – Intel Celeron J1900 / J6412, Intel Core i3-8145U, or Intel Core i5-8265U



# Outdoor Sunlight readable IP65 & IP66 Solutions

# OutdoorVUE



- Open framed or enclosed IP65 front faced or fully IP66 monitors for integration
- From 5.7" right up to 86"
- Wide viewing angles & wide operating temps
- Chassis mount, flush mount or rack mount
- High brightness up to 3,000 nits
- Optional ambient light sensor & optical bonding
- Robust, user friendly, and superb visual performance
- Designed to withstand challenging environments
- Durable and reliable in a multitude of applications including outdoor kiosks, industrial automation and more

[Link to website](#)



- All-In-One IP rated waterproof monitors and displays – Ultra Thin 91.5mm
- 32", 43", 49", 55", 65", and 75" (smaller bespoke solutions available)
- Sunlight Readable High Brightness LED Backlight
- True IP66 sealed – front and rear, no fans, no vents, no filters
- Galvanised Steel + zinc plated + fine grain powder triple coating
- Tempered Glass with AR coating
- Transmissivity > 93%, Reflectivity < 2%
- Operating Temperature -20°C to +50°C / Operating Humidity 5% to 98% / Operating Altitude (m) 2000
- Inbuilt PCAP touch optional
- Customisation available

[Link to website](#)





# Dual Sided Window Displays & High Brightness Monitors



## Dual Sided High Brightness Window Displays

- 43", 49" and 55"
- Brightness options - 2500 / 700, 1500 / 700, 700 / 700 / 300 and 400 / 400 nits
- Two displays back to back and still only 48mm thickness
- Lower brightness side for indoor and higher brightness side for outdoor, doubling your advertising space
- Android OS or HDMI input
- Easy access for maintenance

[Link to website](#)



## High Brightness Monitor Range

- From 7" right up to 86"
- Up to 3,000 nits brightness
- Ultra resistant blackening 110°C panel options
- Open framed or closed framed chassis
- Touch options available
- Optical bonding optional
- Full custom solutions available

[Link to website](#)

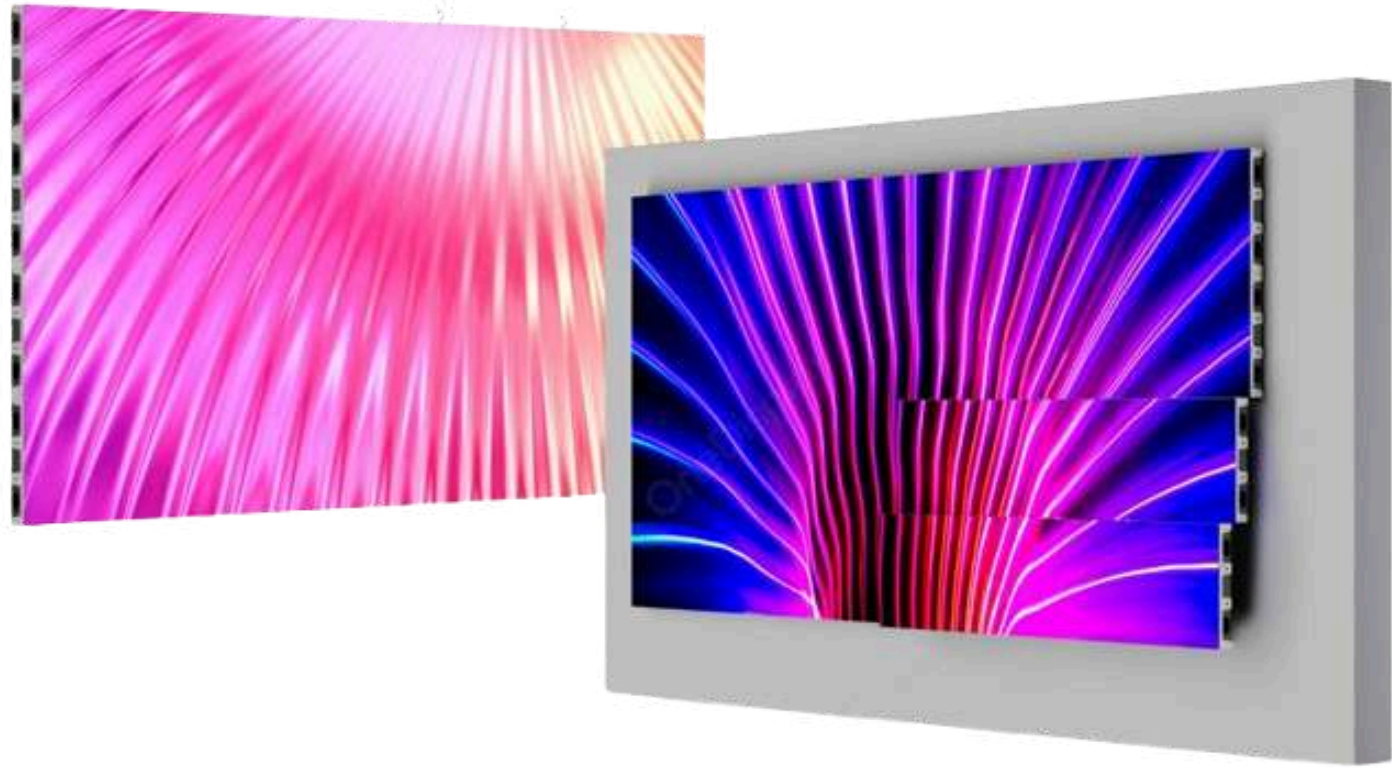


WindowVUE

BrightVUE



# LEDVUE – Fine Pitch LED Displays

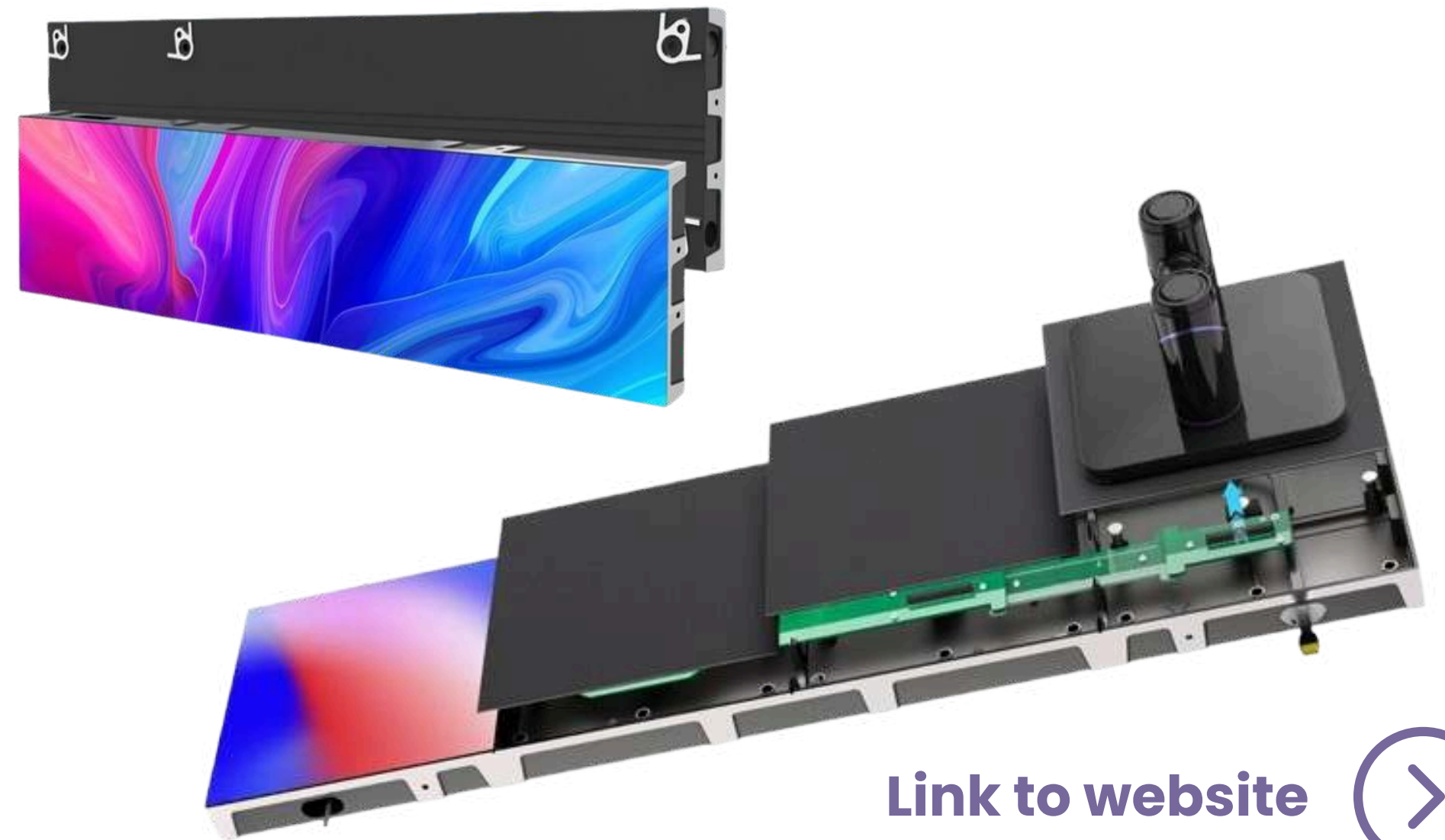


## Ultra-Fine Pitch LED Videowall Displays for Seamless Visual Impact

Experience next-level visual performance with Fine Pitch LED technology — delivering ultra-high resolution, seamless images, and vibrant colours for retail environments, corporate displays, and immersive digital experiences.

## Bright, Sharp, and Ultra-Adaptable

- Pixel pitch: 1.56–3.91 mm for high-res close viewing
- Supports 90° splicing and wraparound setups
- High refresh rate (up to 3,840 Hz) with HDR
- Slim, lightweight modules (41.6 mm, 2–5.5 kg)
- Front-serviceable, easy maintenance
- Optional GOB protection for dust/moisture
- Flexible mounting: wall, ceiling, double-sided, shelf
- Brightness: 500–4,500 nits
- Wide 160° viewing angle
- Multiple signal inputs



[Link to website](#)



# SoloVUE – Desktop Privacy Monitors



## Precision Privacy For Professional Monitors

CDS's Permanent, built-in privacy filters give a physical privacy layer installed inside the monitor bezel, so users can't remove them. No longer worry about the quality, reliability and potential warranty issues as modified (or retrofitted) on brand-name monitors when you can take high-quality professional privacy monitors with an internal filter, so compliance doesn't depend on stick-on or removable accessories.

## Secure, Durable, Office-Ready

- Permanent laminated privacy filter
- Physical privacy layer inside the monitor bezel
- Blocks side-view visibility to protect sensitive information
- Durable plastic construction
- Ideal for open-plan offices or shared workspaces
- Sizes 23.8" & 27" inch monitors
- Resolutions (1920x1080) (2560x1440)

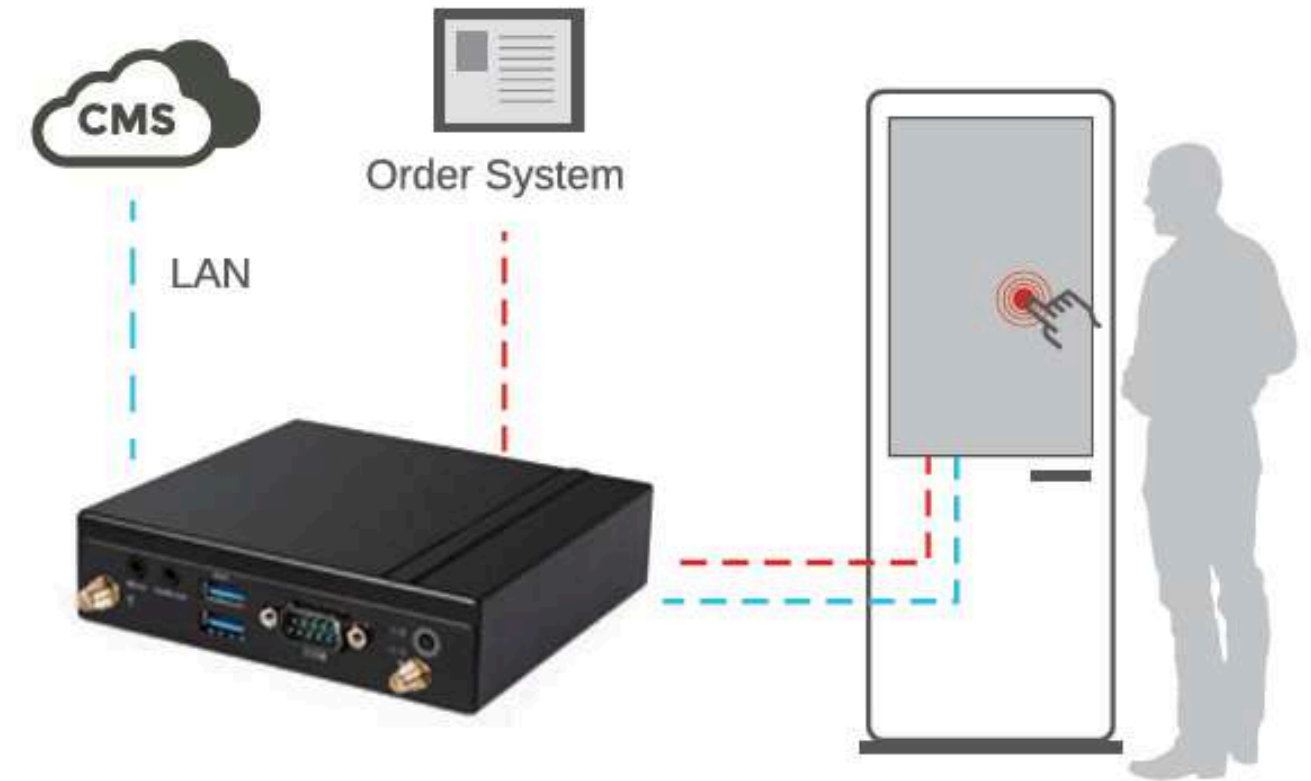


[Link to website](#)





# High Reliability Giada Media Players



## Giada Hot-Selling Media Players

Our shared commitment to technological excellence ensures that each system — whether powering a digital billboard, an interactive kiosk, or a mission-critical industrial HMI — is built to perform in real-world conditions. This alliance represents not only a strong product offering but a joint vision for the future of intelligent display computing.

[Link to website](#)



## ARM Platform

- DN83 – Entry-level, single-display (Rockchip 3528A).
- DN76 – Dual-display, cost-efficient (RK3568).
- D77 – High-end, AI-ready, up to four displays (RK3588).

## x86 Platform

- VM27 – Fanless entry model, two displays (Celeron N6210).
- DK310 – Mid-range, strong multi-display (Celeron J6412).
- F106D/F108D – Dual/triple-display with flexible cooling (N5100/N100/N97).
- DM6-R – Cost-effective AMD, four displays.
- D613-U1 – High-end Intel Core, four displays, for intensive use.

# The Latest High Reliability Digital Signage Range



CORE DS MONITORS



SLIMLINE PRO PREMIUM DS SOLUTIONS



LARGE FORMAT DS SOLUTIONS



HIGH VIBRANCE SOLUTIONS (700 NITS)



ULTRA HIGH BRIGHT DS SOLUTIONS (3500 NITS)



DOUBLE SIDED WINDOW DS SOLUTIONS



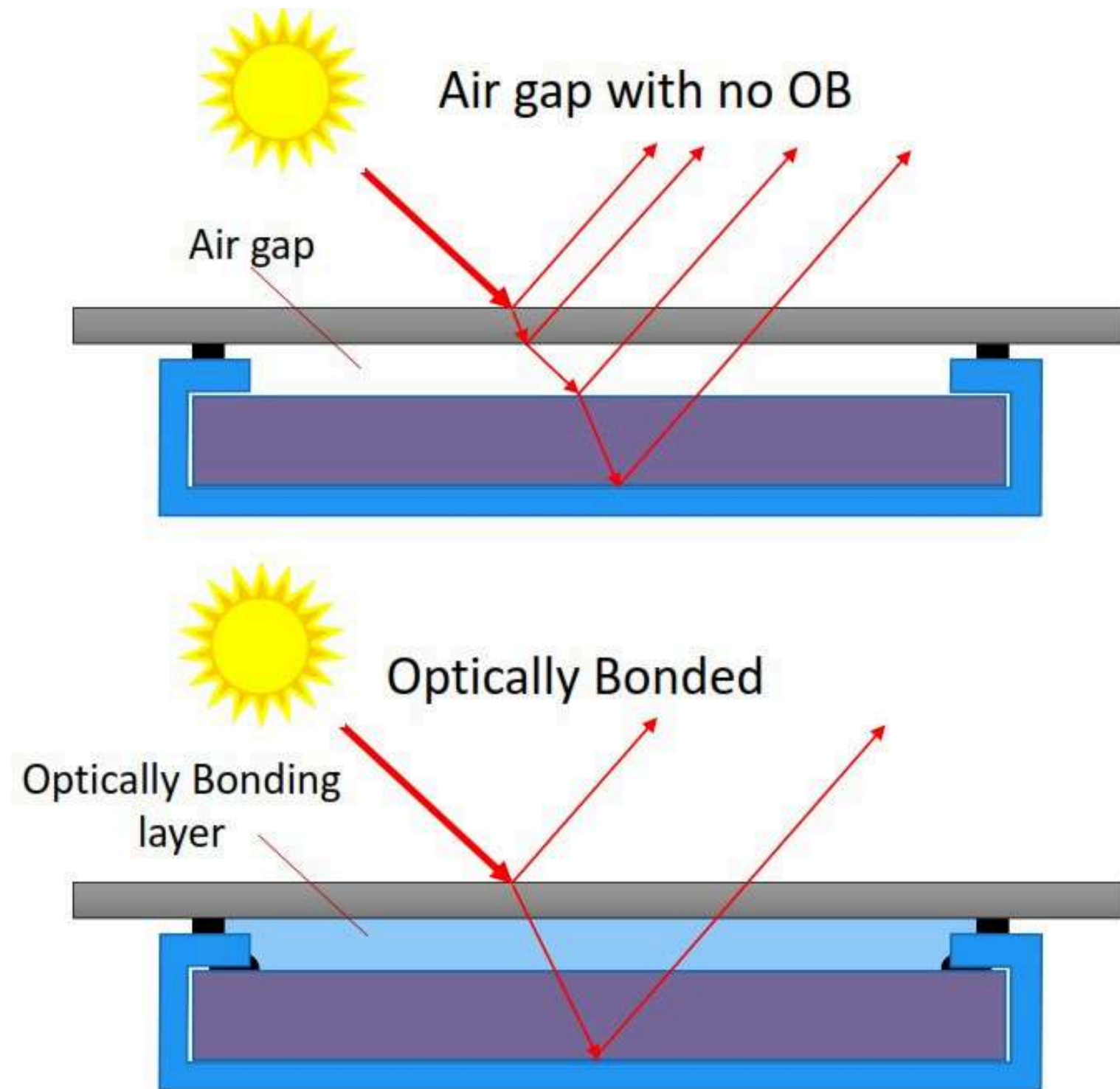
HIGH BRIGHT DOUBLE SIDED WINDOW DS SOLUTIONS



INTERACTIVE TOUCH DS SOLUTIONS



# Value Added Services & Enhancement Capabilities



***“We add value for you and your applications”***

CDS offers optical enhancements for displays, including Anti-Reflection Enhancement Film, AR glass, or full optical bonding. Optical bonding involves filling the air gap between the LCD and substrate, eliminating light refraction and reflection, improving display legibility in direct sunlight.

It also acts as a barrier against condensation build-up and provides UV protection for outdoor applications. The bonding, combined with an LED backlit panel, reduces energy consumption compared to high bright products. CDS can customize solutions based on panel and substrate types, addressing specific project requirements, timelines, and budgets.

Link to website





# Our Customers Include...

*“CDS delivers just ask these brands!”*



BAE SYSTEMS



ZENITH  
WATCH MANUFACTURE SINCE 1865

BOSCH

DELL



PHILIPS

QUALCOMM

SONY

Electrolux

Miele



Timberland

national  
express

GUINNESS

JOHN DEERE



## Our Testimonials



“

”

“The CDS team were really helpful in sorting out an order for an IP rated LCD monitor. Their communication and assistance were professional and timely and I wouldn't hesitate to use them again in the future or recommend them to others in the industry.”

“We use over a dozen of the ultra-wide touchscreen monitors and have had nothing but good results.”



“

”

“CDS are a pleasure to work with and quite helpful in assisting with finding the right product. The team are very responsive, and followed up to ensure we received the product and that our experience was a positive one. ”

“A great partner! The team are always very helpful with anything I request now matter how unique the project.”



“

”

“Ash Hawkes and Meghan Mudge are great at taking care of our needs. I would highly recommend CDS for any business looking for a custom solution. The CDS team is very attentive and dedicated to customer service. They made the whole process painless and easy. The level of customer service they have provided makes me excited for the future of our business relationship. Keep up the fantastic work!”





# Crystal Display Systems – About us!

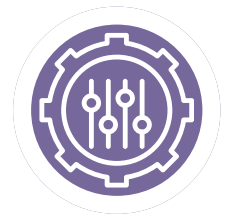
We are a leading designer, distributor, value added reseller as well as the developer of custom monitors and customisation of flat panel display solutions.

Established over 12 years ago, our expertise allows us to offer the best solutions to our clients and partners. We offer Industrial TFT LCDs, OLEDs embedded AIO, touch screens, and digital signage solutions.

Our technical sales and support team to work closely with you on your specific project and requirements.



OVER 1,500 PROJECTS COMPLETED



OVER 500 DESIGN-IN PROJECTS



SHIPPED TO MORE THAN 60 COUNTRIES WORLDWIDE



MORE THAN 15 YEARS OF EXPERIENCE



MORE THAN 1,000 SATISFIED CUSTOMERS



CONTINUOUS BUSINESS GROWTH



*“Would you like to explore further solutions? Simply get in touch.”*



# Have a question for our team?

If you need any additional information or wish to discuss your project with us in more detail then we would love to hear from you!

## CONTACT US

Crystal Display Systems Ltd  
Unit 6 M2M Park, Fort  
Bridgewood  
Maidstone Road, Rochester,  
Kent. ME1 3DQ

T : +44(0) 1634 791600  
E : [info@crystal-display.com](mailto:info@crystal-display.com)  
W : [crystal-display.com](http://crystal-display.com)

Your Global Displays Specialist

