

Digital Signage Displays

Product Catalogue





01



05



09



17



25



35



39



47



51

When it comes to Digital Signage; we've got you covered!

Using our industry expertise we are fully equipped to provide complete turnkey solutions; developing software to be used alongside the superior hardware that we supply. Thanks to this factor, as well as the huge diversity in the solutions that we offer, we are a one-stop-shop for all Digital Signage projects.

We have solutions to meet every commercial display need, from 10" POS displays to colossal 10x10 Video Walls; we cover an enormous range of screen sizes. We offer a huge variety of products, all designed for 24/7 usage, such as High Brightness Monitors, IR and PCAP Touch Screens, Tablet-Style Android Advertising Displays, IP Rated Outdoor Screens as well as a range of back end software solutions for all of them. We can provide simple, cost-effective solutions that anybody can use, regardless of your level of technical knowledge; ideal for SMEs. We can also provide more comprehensive solutions for larger corporate projects that allow you to control, monitor and update a network of screens all over the world through our online portal. We know how to get the balance just right so that we can provide cost-effective, stylish and robust solutions that are suitable for use in public spaces.

We offer a full 3 year warranty on all of our core ranges that are featured in this brochure and also provide lifetime technical support on every product that we sell. We understand that every Digital Signage project is different and that is why working with an experienced and reputable supplier is essential.

Contents

Advertising Displays

01

Android Advertising Displays

05

Android Freestanding Digital Posters

Menu Boards

09

Network Digital Menu Board

Professional Monitors & Video Wall Displays

13

Professional Monitors

17

LCD Video Wall Displays

Window Displays

21

High Brightness Monitors

25

Ultra High Brightness Monitors

29

Digital Rod Displays

Outdoor Displays

31

Outdoor Advertising Displays

35

Outdoor Freestanding Digital Posters

Touch Screens

39

PCAP Touch Screens

43

Infrared Freestanding Touch Screen Posters

47

Interactive Touch Display

Small Sized Displays

51

POS Android Advertising Displays

55

Ultra-Wide Stretched Displays

Media Players

57

Standalone Android Media Player

59

Android Cloud Network Media Player

59

Android Cloud Network Media Player with Live Input

Digital Signage Software

61

Network CMS

65

Touch CMS

Wanneer het op Digital Signage aankomt; wij ontzorgen je!

Met onze expertise in de branche, zijn wij volledig uitgerust om u een complete oplossing te leveren. Onze steeds vernieuwende software in combinatie met onze superieure hardware zorgen voor de perfecte combinatie. Dankzij deze combinatie en de enorme diversiteit in de oplossingen die we aanbieden, zijn wij een one-stop-shop voor alle Digital Signage projecten.

We hebben alle nodige oplossingen in huis om te kunnen voldoen aan elke commerciële displaybehoefte, van 10" POS displays tot kolossale 10x10 Video Walls. We bieden een groot scala aan schermformaten aan, allemaal ontworpen voor 24/7 gebruik. Deze oplossingen bieden een eenvoudige, kosteneffectieve oplossing aan, die iedereen kan gebruiken, ongeacht uw technische kennis. Kortom ideaal voor kleinere bedrijven alsook onze uitgebreidere oplossingen voor grotere bedrijfsprojecten, waarmee u al uw schermen over de hele wereld kunt controleren, monitoren en updaten via onze online portal.

Wij bieden naast minimaal 3 jaar garantie op al onze producten in deze brochure ook levenslange technische ondersteuning op elk product die we verkopen. We begrijpen dat elk Digital Signage-project anders is en daarom is het belangrijk om te werken met een ervaren en gerenommeerde leverancier zoals ons.

Quando si tratta di Digital Signage non abbiamo rivali!

Grazie alla nostra esperienza siamo in grado fornire soluzioni complete e personalizzate, in cui hardware di altissima qualità e software evoluti garantiscono la miglior gestione possibile di un progetto di Digital Signage.

Offriamo la giusta soluzione per qualsiasi necessità: dai monitor ad elevata luminosità per l'advertising in vetrina a quelli da interno, dagli eleganti e fluidi display con tecnologia touch PCAP a quelli ad infrarossi, dagli infopoint indoor a quelli outdoor resistenti agli agenti atmosferici, senza dimenticare ovviamente i nostri software per la gestione del network da remoto.

Ogni progetto di Digital Signage è unico: per questo motivo garantiamo massimo impegno e precisione nell'individuare la soluzione che più si adatta alle vostra azienda, sia che si tratti di una piccola attività a gestione familiare che di una grande impresa con un team di informatici al suo interno.

Inoltre, per completare la nostra offerta, offriamo ben 3 anni di garanzia e la presenza di assistenza tecnica a vita su tutti i prodotti mostrati in catalogo.

When it comes to Digital Signage; we've got you covered!

Med vores omfattende branche kendskab er vi fuldt rustet til at tilbyde komplette løsninger; udvikle software til brug sammen med den skræddersyede hardware, vi leverer. Takket være det brede produktsortiment, kan vi tilbyde one-stop-shop for alle Digital Signage-projekter. Vi har løsninger til at imødekomme ethvert kommercielt displaybehov, fra 10" POS-skærme helt op til de store 10x10 Video vægge.

Vi tilbyder et bredt udvalg af skærmstørrelser, der alle er designet til 24/7 brug. Vi kan tilbyde enkle konkurrence dygtige løsninger, som alle kan bruge, uanset niveauet af teknisk viden, - ideel til mindre Signage opgaver. Vi tilbyder også mere omfattende løsninger til større virksomhedsprojekter, der giver dig mulighed for at styre, overvåge og opdatere et netværk af skærme over hele verden via vores online portal. Vi tilbyder minimum 3 års garanti på alle vores produkter i denne brochure, og giver tillige teknisk livstids support på hvert produkt, som vi sælger.

Vi forstår, at Digital Signage løsninger er mangeartede, hvilket gør det vigtigt at samarbejde med en erfaren og troværdig partner.

Une offre globale de solutions d'affichage dynamique.

Grâce à l'association de la puissance industrielle d'un fabricant aux compétences d'une société de développement de logiciels, nous disposons d'une offre complète en matière d'affichage dynamique.

De l'écran POS 10" aux murs d'images, nous proposons une large gamme de produits professionnels (utilisation 24h/24h 7j/7j) afin de répondre à l'ensemble de vos besoins. Nous fournissons des solutions de gestion d'affichage au coût contenu et simple d'utilisation peu importe votre niveau technique, idéal pour les TPE/PME. Nous pouvons également mettre à disposition des solutions plus complètes afin de piloter l'ensemble de vos écrans via notre portail en ligne.

L'ensemble de notre gamme bénéficie d'une garantie de 3 ans et d'une assistance technique à vie.

Quando hablamos de cartelería digital ¡Tenemos la solución!

Usando toda nuestra experiencia en la industria, estamos totalmente equipados para brindar soluciones completas; desarrollando nuestra plataforma de software integrada con nuestro hardware de alta calidad. Gracias a este factor, junto a la gran diversidad de soluciones que ofrecemos, somos un proveedor único para todos los proyectos de cartelería digital.

Tenemos soluciones para satisfacer todas las necesidades comerciales de visualización, desde pantallas de 10" hasta colosales muros de video de 10x10; cubriendo una enorme variedad de tamaños de pantalla, todas diseñadas para un uso comercial de 24/7.

Podemos proveer desde soluciones simples y rentables que cualquiera puede usar independientemente de su nivel de conocimiento técnico; lo cual es ideal para pequeñas empresas. Y por otro lado, disponemos de soluciones más completas para proyectos corporativos de mayor envergadura que le permiten al usuario controlar, monitorear y actualizar una red de pantallas desde cualquier parte mundo a través de nuestro portal en línea.

Ofrecemos una garantía mínima de 3 años en todos los productos presentados en este catálogo, así como soporte técnico de por vida en cada producto que vendemos. Entendemos que cada proyecto de cartelería digital es diferente y es por ello que es esencial trabajar con un proveedor experimentado y de confianza como nosotros.

Android Advertising Displays



Plug and Play

Plug and Play is the easiest and most simple way to upload content to the screen. Simply load images and videos onto a USB stick, insert in the display, wait for your content to copy over and then remove. Your images and videos will now play in a continuous loop.

Integrated Android Media Player

The integrated Android Media Player allows for super fast updates. If required you can also run third party Digital Signage software via the Android PC board.

Portrait/Landscape Orientation

The screen can be used in either a landscape or portrait orientation depending on your requirement.

LED Backlight

Improves brightness and contrast as well as improving their lifespan and reducing the power consumption. Unlike other forms of light this technology is mercury free; making it even more eco-friendly. The panel and backlight have a lifespan in excess of 70,000 hours.

Giant Tablet Styling

Designed to resemble a giant smartphone or tablet. The sleek and sexy look is achieved with a striking aluminium surround and stunning IPX1 rated edge-to-edge glass.



Plug and Play



24/7 Usage



Free Scheduling Software



Android Media Player



IPS Panel Technology



Network Upgrade (go to page 61 for more information)

The screen can be upgraded to become a network screen that unlocks a host of new features including online updates and multiple media zones.

IPS Panel

With 450cd/m² the IPS panel shines brighter than any domestic television while delivering superior image quality and colour depth at 178° ultra wide viewing angle in both landscape and portrait orientations.



Connect Devices

If you want to use the screen as a monitor you can connect devices via HDMI and VGA.



Lockable Door

Secure access to the AV ports and USB ports to prevent any unwanted updates.

Commercial Grade

Designed for use in commercial applications this screen can run 24/7. There are no external buttons or controls to avoid tampering.



Free Wall Mount

The screen comes with a super-slim wall mount that allows the screen to be securely mounted in either landscape or portrait orientation.



Free Wall Mount



LED Backlight



Eco Power Timer



AV Inputs



Landscape or Portrait Orientation



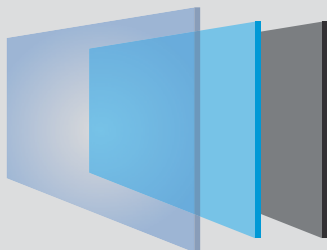
Plug and Play

These displays have their own built in HD Android media player and require no additional hardware or software. Load your pictures and videos onto a USB stick, open the screen's locker door and insert the USB stick, this copies the files to the screen's internal memory. Once you remove the USB stick your pictures and videos will play in a continuous loop. It couldn't be simpler to get your content onto the screen.



Free Scheduling Software

For more complicated requirements you can use the free scheduling software to update the screen. This software allows you to display different content at certain times of the day, for example a restaurant could display breakfast menus in the morning, lunch menus in the afternoon and dinner menus in the evening. You can also set image duration and transition effects using this software.



IPS Panel

Accurately displays an image's quality and colour depth at a 178° ultra wide viewing angle. From bright sunlight to the most challenging lighting environments these displays are designed to reproduce and maintain the ultimate colour temperature for lifelike images. The panel is also optimised for mounting in either landscape or portrait orientation.



24/7 Commercial Use

A commercial grade panel, with a lifespan in excess of 70,000 hours, and high quality components ensure that this display can be in constant use 24/7. Tablet-like styling is achieved thanks to their tempered glass front and robust steel enclosure, framed in an unpainted aluminium surround, unlike cheap imitations.

	Display Size	19 Inch	22 Inch	32 Inch	43 Inch	50 Inch	55 Inch	
Panel	Resolution	1920x1080						
	Display Area (mm)	408.6x229.6	478x269	699x394	942x525	1075.6x605.4	1211x682	
	Aspect Ratio	16:9						
	Brightness (cd/m ²)	450						
	Colour	16.7M						
	Viewing Angle	178°						
	Contrast Ratio	5000:1						
Audio	Speaker Type	5W, 8Ω (x2)						
AV Inputs	Video	HDMI, VGA						
	Audio	Audio Socket (3.5mm)						
Power	Power Consumption (W)	16	22	52	65	75	85	
	Input Voltage	AC110~240V (50Hz~60Hz)						
Mechanical	Unit Size (WxHxD mm)	501x322x36	590x383x46	814x504x63	1045x638x63	1199x736x44	1366x837x50.1	
	Package Size (WxHxD mm)	580x430x120	662x477x131	956x615x164	1175x775x215	1357x867x176	1525x1016x214	
	VESA Holes (mm)	100x100/150x100	100x100	400x200	400x400			
	Net Weight (kg)	5.9	7.25	13.1	22.8	28.05	39.7	
	Gross Weight (kg)	7.8	9.6	16.9	30.2	37	49.7	
Environmental	Operating Temperature	0°C to 50°C						
	Storage Temperature	-30°C to 60°C						
	Operating Humidity	10% to 80%						
	Storage Humidity	5% to 95%						
Computer	Internal Media Player	Media Formats	Video (MPG, AVI, MP4, RM, RMVB, TS), Audio (MP3, WMA), Image (JPG, GIF, BMP, PNG)					
		Media Resolution	1920x1080/1080x1920					
		Internal Memory	6GB					
		CPU	Quad-Core Cortex-A17@1.61GHz					
		GPU	Mali-T760 MP4 @600MHz					
		RAM	2GB DDR3					
		ROM	8GB NAND					
		USB	USB2.0 HOST (x2)					
		LAN	10/100M Ethernet (Network Version Only)					
		Wi-Fi	802.11b/g/n/ac (Network Version Only)					
		OS	Android 5.1.1					
Graphic Engine	OpenGL ES 1.1/2.0/3.0/3.1, OpenCL 1.1, Renderscript, Direct3D 11.1							
Accessories	Included	Wall Mount, Scheduling Software, Remote Control, Key, User Manual						
	Optional	Network Upgrade, Touch Screen Upgrade, Special Wall Mount, Floor Stand/Trolley, Ceiling Mount, Table Stand						



Android Freestanding Digital Posters

Plug and Play

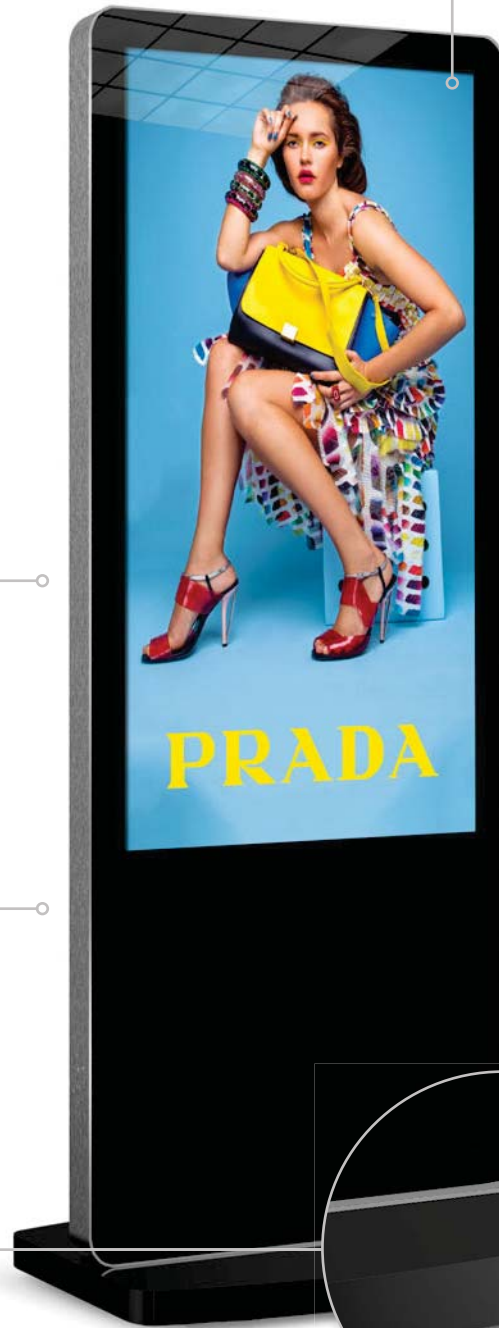
Plug and Play is the easiest and most simple way to upload content to the screen. Simply load images and videos onto a USB stick, insert in the display. Wait for your content to copy over and then remove. Your images and videos will now play in a continuous loop.

Internal Locker

If you want to use the screen as a monitor you can connect external devices via HDMI and VGA and keep the devices in the discrete internal locker.

Commercial Grade

Designed for use in commercial applications this screen can run 24/7. There are no external buttons or controls to avoid tampering.



Free Integrated Castors

Designed with discreet retractable castors for easy manoeuvrability; once the screen is in position the wheels can be retracted.



Plug and Play



24/7 Usage



Free Scheduling Software



Android Media Player



IPS Panel Technology



Network Upgrade (go to page 61 for more information)

The screen can be upgraded to become a network screen that unlocks a host of new features including online updates and multiple media zones.

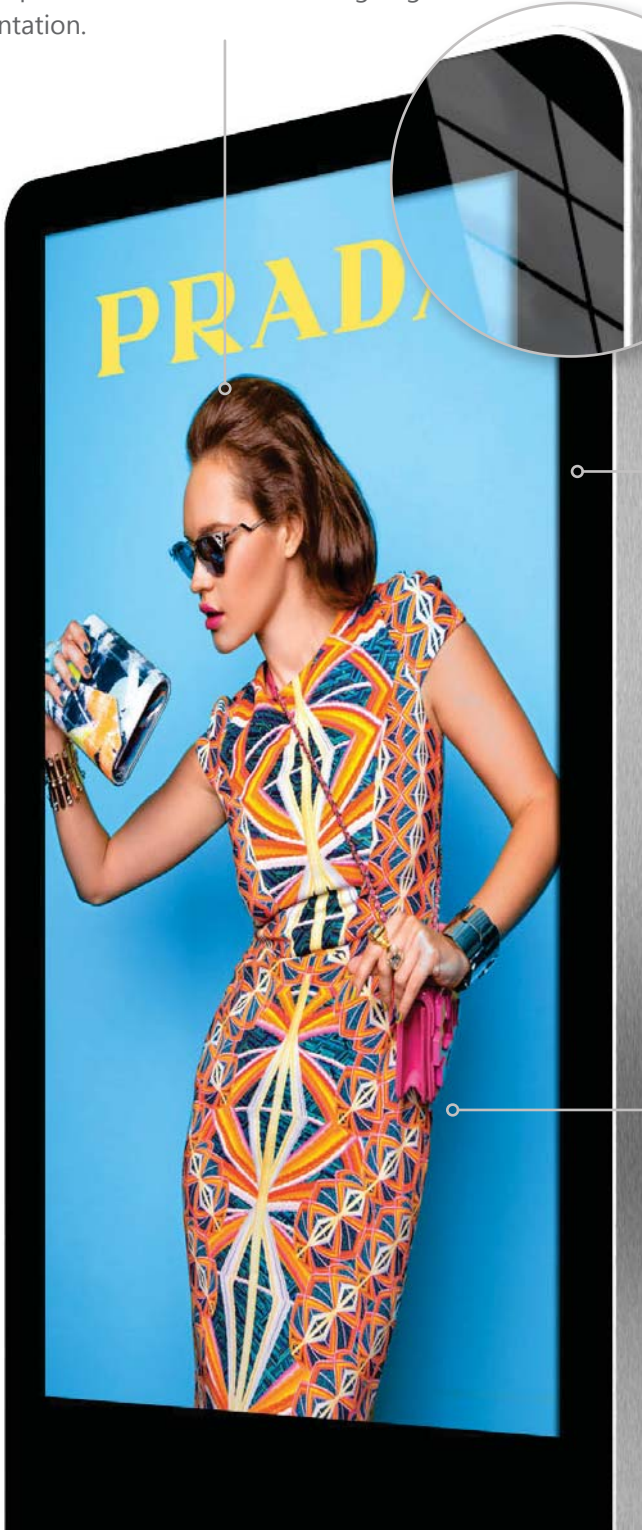
IPS Panel

With 450cd/m² the IPS panel shines brighter than any domestic television while delivering superior image quality and colour depth at 178° ultra wide viewing angle in portrait orientation.



Giant Tablet Styling

Designed to resemble a giant smartphone or tablet. The sleek and sexy look is achieved with a striking aluminium surround and stunning IPX1 rated edge-to-edge glass.



Integrated Android Media Player

The integrated Android Media Player allows for super fast updates. If required you can also run third party Digital Signage software via the Android PC board.

LED Backlight

Improves brightness and contrast as well as improving their lifespan and reducing the power consumption. Unlike other forms of light this technology is mercury free; making it even more eco-friendly. The panel and backlight have a lifespan in excess of 70,000 hours.



Free Integrated Castors



LED Backlight



Eco Power Timer



AV Inputs



Integrated Speakers



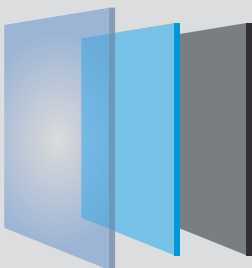
Plug and Play

These displays have their own built in HD Android media player and require no additional hardware or software. Load your pictures and videos onto a USB stick, open the screen's locker door and insert the USB stick, this copies the files to the screen's internal memory. Once you remove the USB stick your pictures and videos will play in a continuous loop. It couldn't be simpler to get your content onto the screen.



Free Scheduling Software

For more complicated requirements you can use the free scheduling software to update the screen. This software allows you to display different content at certain times of the day, for example a restaurant could display breakfast menus in the morning, lunch menus in the afternoon and dinner menus in the evening. You can also set image duration and transition effects using this software.



IPS Panel

Accurately displays an image's quality and colour depth at a 178° ultra wide viewing angle. From bright sunlight to the most challenging lighting environments these displays are designed to reproduce and maintain the ultimate colour temperature for lifelike images. The panel is also optimised for mounting in either landscape or portrait orientation.



24/7 Commercial Use

A commercial grade panel, with a lifespan in excess of 70,000 hours, and high quality components ensure that this display can be in constant use 24/7. Tablet-like styling is achieved thanks to their tempered glass front and robust steel enclosure, framed in an unpainted aluminium surround, unlike cheap imitations.

		Display Size	50 Inch	55 Inch
Panel	Resolution		1080x1920	
	Display Area (mm)		618.4x1097.8	682.4x1211.6
	Aspect Ratio		16:9	
	Brightness (cd/m ²)		450	
	Colour		16.7M	
	Viewing Angle		178°	
	Contrast Ratio		4000:1	
Audio	Speaker Type		6W, 8Ω (x2)	
AV Inputs	Video		HDMI, VGA	
	Audio		Audio Socket (3.5mm)	
Power	Power Consumption (W)		100	120
	Input Voltage		AC110~240V (50Hz~60Hz)	
Mechanical	Unit Size (WxHxD mm)		747x1850x50	813x1960x50
	Package Size (WxHxD mm)		2000x865x565	2100x990x570
	Net Weight (kg)		72	111
	Gross Weight (kg)		82	136
Environmental	Operating Temperature		0 °C to 50 °C	
	Storage Temperature		-30°C to 60°C	
	Operating Humidity		10% to 80%	
	Storage Humidity		5% to 95%	
Computer	Internal Media Player	Media Formats	Video (MPG, AVI, MP4, RM, RMVB, TS), Audio (MP3, WMA), Image (JPG, GIF, BMP, PNG)	
		Media Resolution	1080x1920	
		Internal Memory	6GB	
		CPU	Quad-Core Cortex-A17@1.61GHz	
		GPU	Mali-T760 MP4 @600MHz	
		RAM	2GB DDR3	
		ROM	8GB NAND	
		USB	USB2.0 HOST (x2)	
		LAN	10/100M Ethernet (Network Version Only)	
		Wi-Fi	802.11b/g/n/ac (Network Version Only)	
		OS	Android 5.1.1	
		Graphic Engine	OpenGL ES 1.1/2.0/3.0/3.1, OpenCL 1.1, Renderscript, Direct3D 11.1	
Accessories	Included		Scheduling Software, Remote Control, Key, User Manual	
	Optional		Network Upgrade, Touch Screen Upgrade	



Network Digital Menu Boards



Integrated Android Media Player

The integrated Android Media Player allows for super fast updates. If required you can also run third party Digital Signage software via the Android PC board.



All-in-One Solution

Combine a commercial grade LCD screen, an Android Network Media Player, 1 year free subscription to our premium Digital Signage software as well as a 3 year warranty and lifetime technical support. Digital Menu Boards have been made easy with this package. Everything You Need, for One Great Price and All from One Supplier.

Narrow Bezel

Narrow Bezels allow multiple Digital Menu Boards to be placed side by side that create a near seamless display. With minimal distractions your customers now get a greater viewing experience.

Environmentally Friendly

Power Timer

Allows for reduced power usage by automatically powering off in hours that the displays are not required. You can set daily On/Off times for your displays.

Commercial Grade

Designed for use in commercial applications this screen can run 24/7. There are no external buttons or controls to avoid tampering.

Plug and Play

If there is no internet access available the screen can still be updated thanks to their backup USB update option. Simply package up your Playlist onto a USB stick and insert into the screen. Your templates, schedule and content will now copy over and start playing.



Complete Package Solution



Wireless Wi-Fi Connection



LAN Connection



24/7 Usage



IPS Panel Technology



Network Product+ (go to page 57 for more information)

The screen is a network screen that has a host of features including online updates and multiple media zones.



IPS Panel

Superior image quality with an ultra wide viewing angle of 178°, the screen shines bright thanks to its 450 cd/m² brightness rating (more than twice as bright as a domestic television). From bright sunlight to the most challenging lighting environments these displays are designed to reproduce and maintain the ultimate colour temperature for lifelike images in both landscape and portrait orientations.

Built in Wi-Fi

Connect the screen to the CMS wirelessly via the integrated Wi-Fi or by LAN

Portrait/Landscape Orientation

The screen can be used in either a landscape or portrait orientation depending on your requirement.

LED Backlight

Improves brightness and contrast as well as improving their lifespan and reducing the power consumption. Unlike other forms of light this technology is mercury free; making it even more eco-friendly. The panel and backlight have a lifespan in excess of 70,000 hours.



Exclusive Template Library



Narrow Bezel



Eco Power Timer



LED Backlight



Landscape or Portrait Orientation

COMMERCIAL
GRADE



TEMPLATE
LIBRARY



COMPLETE
SOLUTION
PACKAGE



ANDROID NETWORK
MEDIA PLAYER



FREE 1 YEAR
SUBSCRIPTION



All-in-One Solution

Combine a commercial grade LCD screen, an Android Network Media Player, 1 year free subscription to our premium Digital Signage software as well as a 3 year warranty and lifetime technical support. Digital Menu Boards have been made easy with this package, there is no complicated software installation; it's a straight out of the box Digital Signage solution. Get this All-in-One solution from the same supplier, it really is that simple.

1st Year Software License Free

With our package the first year of using our cloud based content management system is absolutely free. You don't pay anything for 12 months and get full unrestricted access to the software as well as lifetime technical support. You can also purchase 3 additional year's access at the point of purchase or make a one off payment to have access for life.

Exclusive Template Library

Browse and choose from our exclusive library of Digital Signage templates or even design your own! Within each predesigned template you get the original media files, template layout and playlist. You can customise each of these to just how you would like. You can add your own branding, images or videos. Maintain your brand consistency by adding your logo and customising your colours. Templates are fully adaptable to your needs.

Update Instantly and from Anywhere

Updating your screens is extremely simple. Login to www.MySignagePortal.com to upload media, manage playlists, create your own templates and schedule content for whenever you want; giving you complete control over your network. No special software installation or dedicated PC is required, you can update your screens from anywhere in the world with an internet connection.

Multi Screen Synchronisation

You can synchronise your Digital Menu Boards across multiple screens provided they are connected to the same network. This is ideal for menus above the counter.

	Display Size	32 Inch	43 Inch	50 Inch	55 Inch
Panel	Resolution	1920x1080			
	Display Area (mm)	698.4x392.9	941.2x529.42	1073.78x604	1209.6x680.4
	Aspect Ratio	16:9			
	Brightness (cd/m ²)	450			
	Colour	16.7M			
	Viewing Angle	178°			
	Contrast Ratio	4000:1			
Audio	Speaker Type	5W, 8Ω (x2)			
AV Inputs	Video	HDMI, VGA			
	Audio	Audio Socket (3.5mm)			
Power	Power Consumption (W)	38	45	55	65
	Input Voltage	AC110~240V (50Hz~60Hz)			
Mechanical	Unit Size (WxHxD mm)	723.4x422.9x68	963.6x557.9x60.2	1096.16x632.5x59.3	1232x708.9x59.3
	Package Size (WxHxD mm)	865x555x210	1150x700x210	1245x770x190	1385x845x190
	VESA Holes (mm)	400x200/500x200	400x200	400x200/400x400	
	Net Weight (kg)	11.65	15.1	23.6	28
	Gross Weight (kg)	15.05	19	28.5	34.4
Environmental	Operating Temperature	0°C to 50°C			
	Storage Temperature	-30°C to 60°C			
	Operating Humidity	10% to 80%			
	Storage Humidity	5% to 95%			
Computer	Internal Media Player	Media Formats	Video (MPG, AVI, MP4, RM, RMVB, TS), Audio (MP3, WMA), Image (JPG, GIF, BMP, PNG)		
		Media Resolution	1920x1080/1080x1920		
		Internal Memory	6GB		
		CPU	Quad-Core Cortex-A17@1.61GHz		
		GPU	Mali-T760 MP4 @600MHz		
		RAM	2GB DDR3		
		ROM	8GB NAND		
		USB	USB2.0 HOST (x2)		
		LAN	10/100M Ethernet (Network Version Only)		
		Wi-Fi	802.11b/g/n/ac (Network Version Only)		
		OS	Android 5.1.1		
Accessories	Included	Scheduling Software, Remote Control, Key, User Manual			
	Optional	Wall Mount, Floor Stand/Trolley, Ceiling Mount, Table Stand			



Professional Monitors

Plug and Play

Plug and Play is the easiest and most simple way to upload content to the screen. Simply load images and videos onto a USB stick and insert in the display. Your images and videos will now play in a continuous loop.

Narrow Bezel*

A narrow bezel helps draw attention to the screens images and not the display for maximum impact messaging. Thanks to the narrow bezel these monitors can also be used as part of a budget friendly video wall.

Commercial Grade

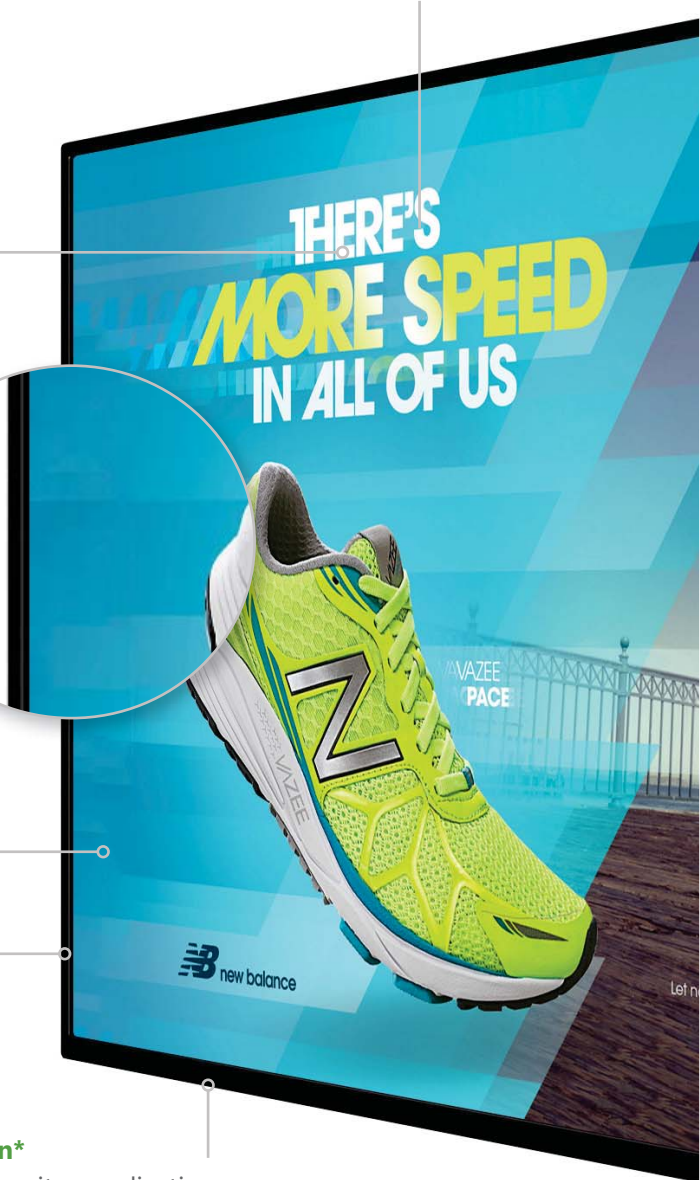
Designed for use in commercial applications this screen can run 24/7. There are no external buttons or controls to avoid tampering.

IR Extension*

As well as having a standard infrared remote control sensor there is also a free infrared remote control sensor extension included for easier kiosk integration.

IPS Panel

With 450cd/m² the IPS panel shines brighter than any domestic television while delivering superior image quality and colour depth at 178° ultra wide viewing angle in both landscape and portrait orientations.



BNC Connection*

Ideal for CCTV monitor applications our monitors have a BNC input for AV connections. The monitor is able to display video direct from CCTV cameras or from a Digital Video Recorder.



Plug and Play



24/7 Usage



AV Inputs



RS-232 Control



IPS Panel Technology

Built-in Video Matrix Processor*

These displays can be used individually or as part of a tiled video wall. As a video wall, the units can tile the video signal automatically thanks to their built-in video matrix processor. This means the video wall can have any configuration without any additional hardware.



Connect Devices

If you want to use the screen as a monitor you can connect devices via HDMI and VGA.

Portrait/Landscape Orientation

The screen can be used in either a landscape or portrait orientation depending on your requirement.

LED Backlight

Improves brightness and contrast as well as improving their lifespan and reducing the power consumption. Unlike other forms of light this technology is mercury free; making it even more eco-friendly. The panel and backlight have a lifespan in excess of 70,000 hours.

* Smaller Professional Monitors 32"-55" only



Integrated Temperature Control



Integrated Speakers



Eco Power Timer



LED Backlight

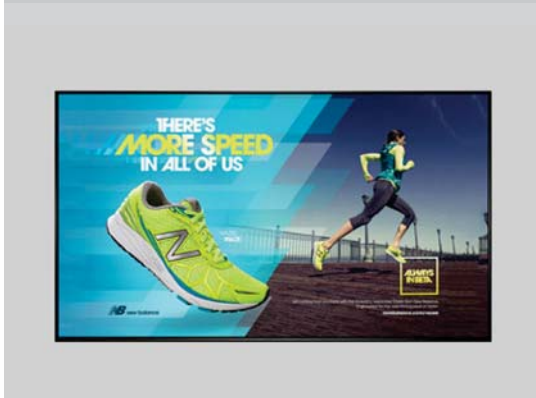


Landscape or Portrait Orientation



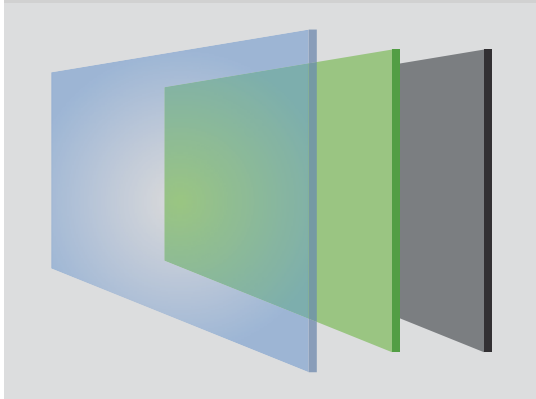
Plug and Play

As well as having a range of AV inputs, our monitors have a built-in HD media player allowing you to run content directly from a USB drive. Load your pictures and videos onto a USB memory stick then insert it into the display, the screen will then start playing the pictures and videos in a continuous loop. (65" and 70" monitors have an integrated Android Media Player that gives you faster processing times, a larger internal memory and are easily network upgradable).



24/7 Commercial Use

A commercial grade panel, with a lifespan in excess of 70,000 hours, and high quality components ensure that this display can be in constant use 24/7.



IPS Panel (Smaller Professional Monitors only)

Accurately displays an image's quality and colour depth at a 178° ultra wide viewing angle. From bright sunlight to the most challenging lighting environments these displays are designed to reproduce and maintain the ultimate colour temperature for lifelike images. The panel is also optimised for mounting in either landscape or portrait orientation.

	Display Size	32 Inch	43 Inch	50 Inch	55 Inch
Panel	Resolution	1920x1080			
	Display Area (mm)	698.4x392.9	941.2x529.42	1073.78x604	1209.6x680.4
	Bezel Size	Top/left/right: 12.5, Bottom: 17.5	Top/left/right: 11.2, Bottom: 17.3		
	Pixel Pitch	0.369x0.369	0.49x0.49	0.55926x 0.55926	0.6342x0.6342
	Aspect Ratio	16:9			
	Brightness (cd/m ²)	450			
	Colour	16.7M			
	Viewing Angle	178°			
	Contrast Ratio	4000:1			
	Audio	Speaker Type	2x2W, 4Ω		
AV Inputs	Video	HDMI, VGA, Audio Socket (3.5mm), BNC (AV)			
Power	Power Consumption (W)	38	45	55	65
	Input Voltage	AC110~240V(50Hz~60Hz)			
Mechanical	Unit Size (WxHxD mm)	723.4x422.9x68	963.6x557.9x60.2	1096.16x632.5x59.3	1232x708.9x59.3
	VESA Holes (mm)	400x200/500x200	400x200	400x200/400x400	
	Net Weight (kg)	9	15.1	23.6	27.95
	Gross Weight (kg)	11.55	19	28.5	34.3
Media Player	Media Formats	Video (MPG, AVI, MP4), Audio (MP3, WMA), Image (JPG, BMP, PNG)			
Environmental	Operating Temperature	0°C to 50°C			
Accessories	Included	Remote Control, User Manual, Power Lead			

	Display Size	65 Inch	70 Inch	84 Inch
Panel	Resolution	1920x1080		3840x2160
	Display Area (mm)	1432.5x807	1549.44x871.56	1863.5x1049.63
	Pixel Pitch	0.744x0.744	0.807x0.807	0.970x0.970
	Aspect Ratio	16:9		
	Brightness (cd/m ²)	450		
	Colour	16.7M		
	Viewing Angle	178°		
	Contrast Ratio	5000:1	4000:1	2000:1
Audio	Speaker Type	2x2W, 4Ω		
AV Inputs	Video	HDMI, VGA, Audio Socket (3.5mm)		HDMI (1080p), HDMI (4K), VGA, DVI, AV1, AV2, YPbPr, RGB/HV, Audio Socket (3.5mm)
Power	Power Consumption (W)	280	350	420
	Input Voltage	AC110~240V(50Hz~60Hz)		
Mechanical	Unit Size (WxHxD mm)	1468.5x843x91.21	1612x934x83.1	1915x1107x93
	Package Size (WxHxD mm)	1650x1030x340	1800x1110x340	2140x1450x450
	VESA Holes (mm)	600x400	600x500	600x400/600x800
	Net Weight (kg)	57	63.2	83.5
	Gross Weight (kg)	66.1	68	175.5
Environmental	Operating Temperature	0°C to 50°C		
Computer	Internal Media Player	Media Formats	Video (MPG, AVI, MP4, RM, RMVB, TS), Audio (MP3, WMA), Image (JPG, GIF, BMP, PNG)	
		Media Resolution	1920x1080/1080x1920	
		Internal Memory	6GB	
		CPU	Quad-Core Cortex-A17@1.61GHz	
		GPU	Mali-T760 MP4 @600MHz	
		RAM	2GB DDR3	
		ROM	8GB NAND	
		USB	USB2.0 HOST (x2)	
		LAN	10/100M Ethernet (Network Version Only)	
		Wi-Fi	802.11b/g/n/ac (Network Version Only)	
		OS	Android 5.1.1	
Graphic Engine	OpenGL ES 1.1/2.0/3.0/3.1, OpenCL 1.1, Renderscript, Direct3D 11.1			
Accessories	Included	Remote Control, User Manual, Power Lead		
	Optional	Network Upgrade		

LCD Video Wall Displays

Multiple Configurations

These displays can be used to create Video Walls of any configuration, for example 2x2, 3x3, 1x4, 5x3 etc. Whatever your configuration requirements these displays can support them, even if you want a portrait Video Wall.

Super Narrow Bezel

Virtually seamless appearance with a bezel of just 3.5mm screen to screen.

IPS Panels

Superior image quality and colour depth at 178° ultra wide viewing angle in both landscape and portrait orientations and with no blackening defect.



Portrait/Landscape Orientation

The Video Wall panels can be used in either a landscape or portrait orientation depending on your requirement.



Automatic Tiling

With an integrated video matrix processor, no additional hardware is required to get your Video Wall display to tile to any configuration.



Super Narrow Bezel



Multiple configurations



Automatic Tiling Function



LED backlight



IPS Panel Technology



Network Upgrade (go to page 61 for more information)

The screen can be upgraded to become a network screen that unlocks a host of new features including online updates and multiple media zones.

Commercial Grade

Designed for use in commercial applications, Video Walls can run 24/7.

Advanced Temperature Control

Designed to run 24/7 in constant use each panel has an advanced temperature control system to keep it running at the optimum temperature no matter the environment.

RS-232 Control

Daisy chain multiple Video Wall panels together via RS-232 for greater control.

Connectivity

You can run the Video Wall display from your PC or Media Players as they have a powerful interface that supports a wide range of audio and video inputs, such as HDMI, VGA, DVI, RGB/HV, Composite Video, and YPbPr.

Environmentally Friendly Power Timer

Allows for a reduced power usage in those hours that the displays are not required. Set daily or weekly On/Off times for your displays.



24/7 Usage



Landscape or Portrait Orientation



Integrated Temperature Control



AV Inputs



178° Super Wide Viewing Angle



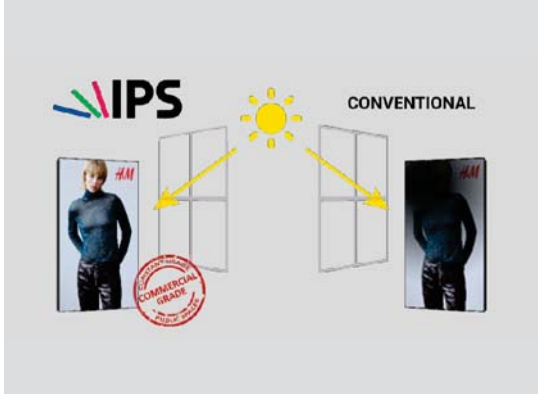
Super Narrow Bezel

Achieve a sensational virtually seamless Video Wall thanks to our Video Wall panels that have a total bezel size of just 3.5mm. This allows your content to take center stage and provides a visual experience to remember for anyone who sees the display.



Automatic Tiling

Our Video Walls Displays offer the ultimate in versatility. With a hassle free setup it is easy for our Video Wall Displays to tile the video signal automatically thanks to their integrated video matrix processor. This means that no additional matrix processing hardware is required; regardless of the configuration of your Video Wall.



IPS Panel

State of the art commercial grade IPS panels give our Video Walls superior colour uniformity, a large viewing angle and remarkably vibrancy, even when mounted in portrait. Also these panels do not suffer from blackening defect when used as a window display.

	Display Size	49 Inch	55 Inch
Panel	Resolution	1920x1080	
	Bezel Size	Bottom/right: 2.34, Top/left: 1.16	Bottom/right: 1.2, Top/left: 2.3
	Active Area (HxW mm)	1074x600.8	1209.9x680.7
	Aspect Ratio	16:9	
	Brightness (cd/m ²)	500	
	Colour	16.7M	
	Colour Temperature	10000K	
	Viewing Angle	178°	
	Contrast Ratio	4000:1	
	Backlight Life	50000 hours	
Inputs/Outputs	Input	HDMI, DVI, VGA, RGB/HV (BNC), Video1 IN (BNC), Video2 IN (BNC), RS-232 In, IR In, Keyboard (IR), Audio in	
	Output	RS-232 Out, IR Out, Audio out	
Power	Power Consumption (W)	155	160
	Input Voltage	100V ~ 240V(50/60Hz)	
	Power Management	VESA DPMS	
Mechanical	Unit Size (WxHxD mm)	1077.5x604.3x113.8	1213.4x684.2x117.9
	Net Weight (Kg)	25	31.5
	Gross Weight (Kg)	33.3	40.6
	Package Size	1258x858x285	1400x950x280
Environmental	Working Temperature	0-50°C	
	Operating Humidity	10-90%	
	Working Pressure	800-1114 hPa (Altitude:0-2,000m)	
Accessories	Included	Remote control, AC Power Cable, User Manual, VGA/HDMI Cable, OSD Control Box	



High Brightness Monitors

High Brightness Panel

1,500cd/m² makes sure this display will always be seen whatever the weather. Over 5 times brighter than that of a standard domestic television to improve the displays image clarity. (47" is 2000cd/m²)

Plug and Play

Plug and Play is the easiest and most simple way to upload content to the screen. Simply load images and videos onto a USB stick, insert in the display, wait for your content to copy over and then remove. Your images and videos will now play in a continuous loop.

Portrait/Landscape Orientation

The screen can be used in either a landscape or portrait orientation depending on your requirement.

Commercial Grade

Designed for use in commercial applications this screen can run 24/7. There are no external buttons or controls to avoid tampering.



Integrated Android Media Player

The integrated Android Media Player allows for super fast updates. If required you can also run third party Digital Signage software via the Android PC board.



Sunlight Readable



24/7 Usage



LED Backlight



Landscape or Portrait Orientation

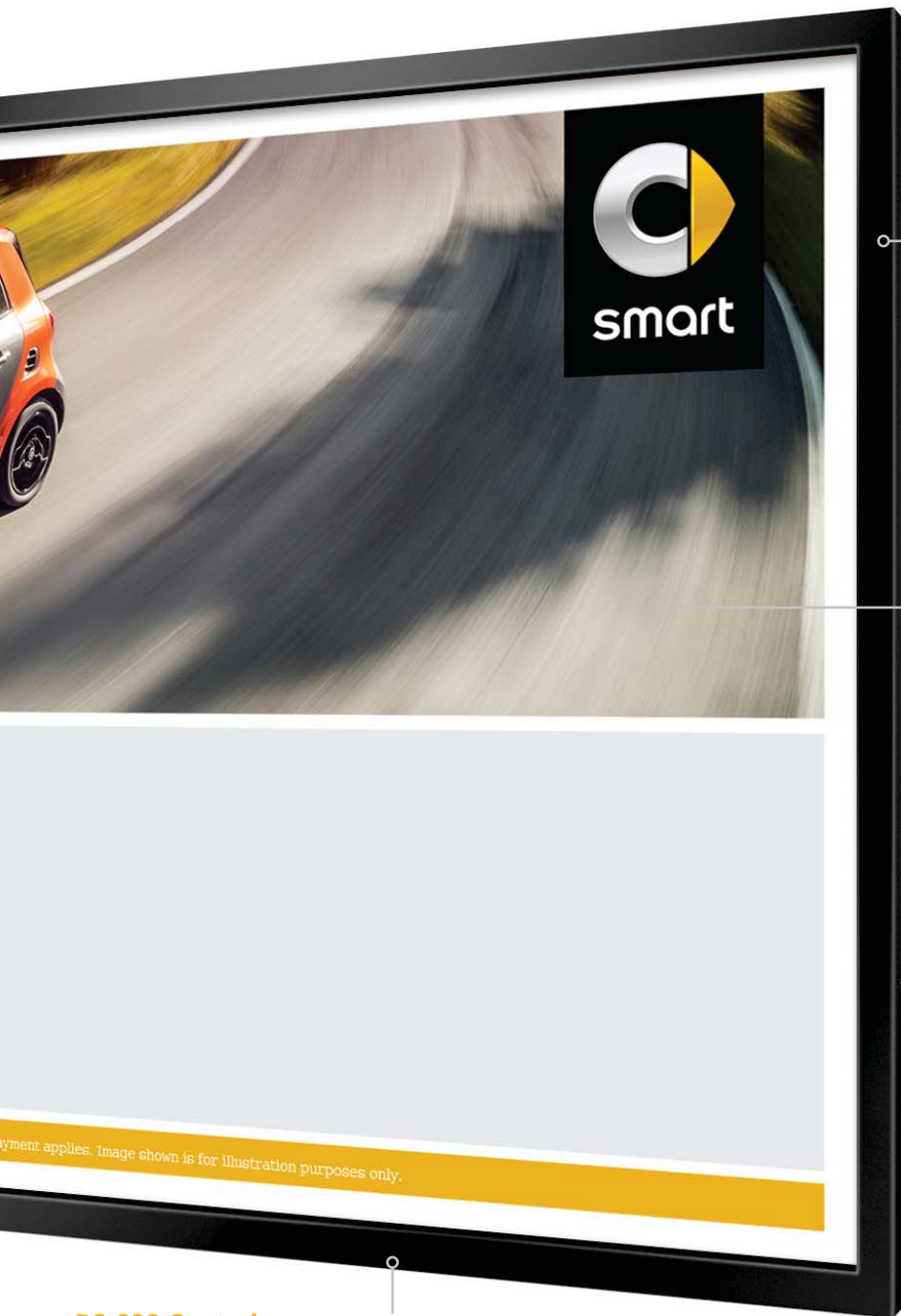


Plug and Play



Network Upgrade (go to page 61 for more information)

The screen can be upgraded to become a network screen that unlocks a host of new features including online updates and multiple media zones.



Advanced Temperature Control

Designed to run 24/7 in constant use the display has an advanced temperature control system to keep it running at the optimum temperature no matter the environment.

LED Backlight

Improves brightness and contrast as well as improving their lifespan and reducing the power consumption. Unlike other forms of light this technology is mercury free; making it even more eco-friendly. The panel and backlight have a lifespan in excess of 70,000 hours.

Connect Devices

If you want to use the screen as a monitor you can Connect devices via HDMI and VGA.



RS-232 Control

Once your screens are connected via RS-232 you can control, scale and customise all of your displays remotely over short and long distances.



Integrated Temperature Control



RS-232 Control



Eco Power Timer



Android Media Player



AV Inputs



Sunlight Readable

Brightness is paramount when using outward facing screens, these displays use commercial grade Ultra High Brightness panels (1,500 cd/m²); more than 5 times brighter than a standard home TV to allow easy readability in direct sunlight.



Plug and Play

The High Brightness Professional Monitors come with a built in HD Android media player, allowing you to update them using a USB memory stick. Load your pictures and videos onto a USB memory stick then insert it into the display, which will copy the files into its internal flash memory. Once you remove the memory stick the screen will then start playing the pictures and videos in a continuous loop. They can also be updated remotely by upgrading your screen to be networked.



Temperature Control

The internal air-conditioning system allows the screens to be in constant use in an outward facing window. Internal fans keep their panels and other internal components at the optimum working temperature; ensuring a long and reliable life for your screens.

	Display Size	32 Inch	43 Inch	47 Inch	55 Inch	65 Inch
Panel	Resolution	1920x1080				
	Display Area (mm)	698.4x392.85	941.18x529.42	1044x589	1210.8x683	1428.5x803.5
	Aspect Ratio	16:9				
	Brightness (cd/m ²)	1,500		2000	1,500	
	Colour	16.7M				
	Viewing Angle	178°				
	Contrast Ratio	4000:1	3000:1	5000:1		
Audio	Speaker Type	2W, 5Ω (x2)				
AV Inputs	Video	HDMI, VGA				
	Audio	Audio Socket (3.5mm)				
Power	Power Consumption (W)	180	230	300	340	420
	Input Voltage	AC110~240V (50Hz~60Hz)				
Mechanical	Unit Size (WxHxD mm)	762x458x78.5	987.2x575.1x57.2	1103.2x647.6x112	1275.6x746.4x101.8	1539x908.4x107
	VESA Holes (mm)	400x200	400x400	600x400	400x400/400x500	600x400
Environmental	Operating Temperature	0°C to 50°C				
	Storage Temperature	-30°C to 60°C				
	Operating Humidity	10% to 80%				
	Storage Humidity	5% to 95%				
Computer	Internal Media Player	Media Formats	Video (MPG, AVI, MP4, RM, RMVB, TS), Audio (MP3, WMA), Image (JPG, GIF, BMP, PNG)			
		Media Resolution	1920x1080/1080x1920			
		Internal Memory	6GB			
		CPU	Quad-Core Cortex-A17@1.61GHz			
		GPU	Mali-T760 MP4 @600MHz			
		RAM	2GB DDR3			
		ROM	8GB NAND			
		USB	USB2.0 HOST (x2)			
		LAN	10/100M Ethernet (Network Version Only)			
		Wi-Fi	802.11b/g/n/ac (Network Version Only)			
		OS	Android 5.1.1			
		Graphic Engine	OpenGL ES 1.1/2.0/3.0/3.1, OpenCL 1.1, Renderscript, Direct3D 11.1			
		Special Features	Images, Videos, Audio, Scrolling Text Message, On/Off Timer, On Screen Clock, Media Rotation			
Accessories	Included	Scheduling Software, Remote Control, User Manual				
	Optional	Network Upgrade, Wall Mount, Floor Stand/Trolley, Ceiling Mount, Table Stand				



Ultra High Brightness Monitors

Ultra High Brightness Panel

Time to let your window display shine, with a brightness of 2500 cd/m² you can be sure this display can be seen even in direct sunlight. At over 10 times brighter than that of a domestic television the special LCD panel provides incredible image quality for window displays.

Blackening Defect Resistant

The Ultra High Brightness Monitor is resistant to blackening defects that occur when LCD displays are placed in direct sunlight. Able to withstand surface temperatures up to 110°C with no blackening defect occurring, this is the number one choice for Digital Signage in window displays.

Plug and Play

Plug and Play is the easiest and most simple way to upload content to the screen. Simply load images and videos onto a USB stick, insert in the display, wait for your content to copy over and then remove. Your images and videos will now play in a continuous loop.

LED Backlight

Improves brightness and contrast as well as improving their lifespan and reducing the power consumption. Unlike other forms of light this technology is mercury free; making it even more eco-friendly. The panel and backlight have a lifespan in excess of 70,000 hours.



Direct Sunlight Readable



Blackening Defect Resistant
up to 110°C



24/7 Usage



Landscape or Portrait
Orientation



Plug and Play



Network Upgrade (go to page 61 for more information)

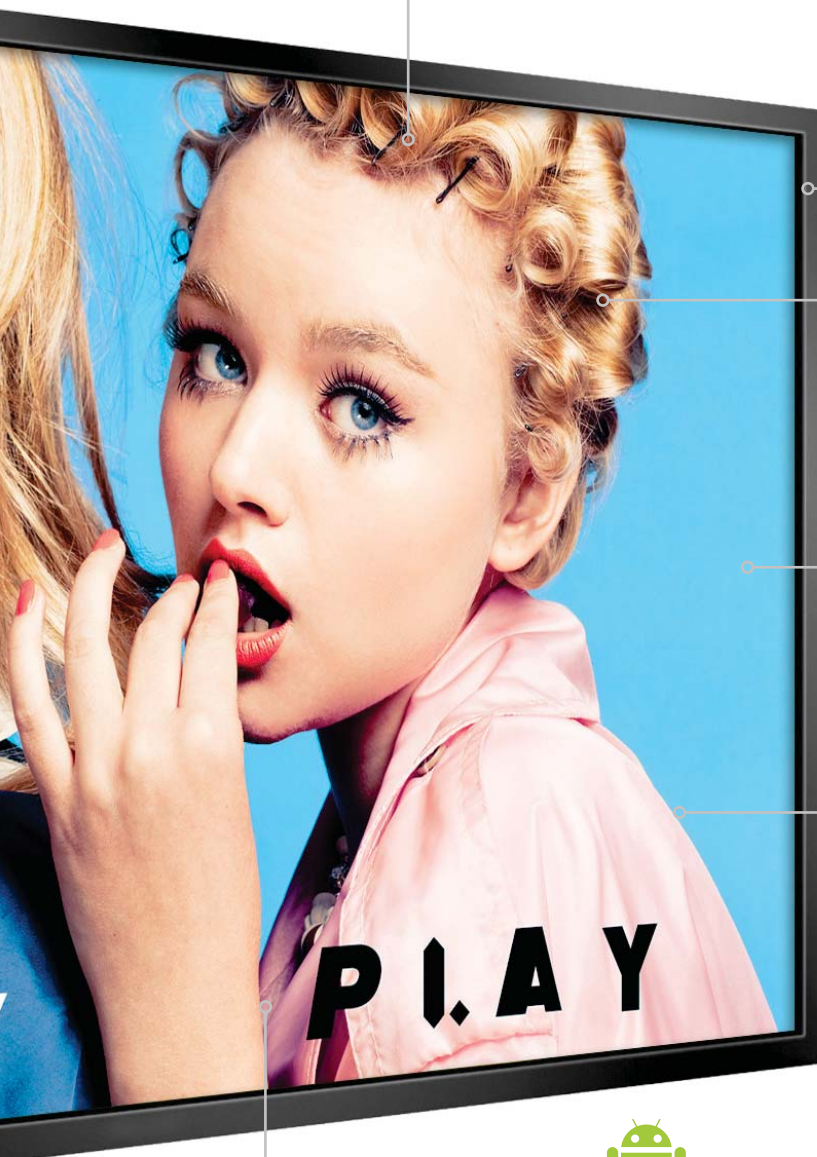
The screen can be upgraded to become a network screen that unlocks a host of new features including online updates and multiple media zones.

RS-232 Control

Once your screens are connected via RS-232 you can control, scale and customise all of your displays remotely over short and long distances.

Advanced Temperature Control

Designed to run 24/7 in constant use the display has an advanced temperature control system to keep it running at the optimum temperature no matter the environment.



Commercial Grade

Designed for use in commercial applications this screen can run 24/7. There are no external buttons or controls to avoid tampering.

Portrait/Landscape Orientation

The screen can be used in either a landscape or portrait orientation depending on your requirement.

Connect Devices

If you want to use the screen as a monitor you can Connect devices via HDMI and VGA.



Integrated Android Media Player

The integrated Android Media Player allows for super fast updates. If required you can also run third party Digital Signage software via the Android PC board.



Integrated Temperature Control



RS-232 Control



Eco Power Timer



Android Media Player



LED Backlight



View in Direct Sunlight

The Ultra High Brightness Monitors are designed for applications in direct sunlight such as window displays. With a brightness of 2,500cd/m2 they are 10 times brighter than a domestic television. When dealing with direct sunlight most LCD panels will overheat and the blackening on the panel will occur, we use a special ultra-high brightness panel that can withstand surface temperatures up to 110°C with no blackening defect occurring making this the number one choice for Digital Signage in window displays.



Plug and Play

The Ultra High Brightness Monitors come with a built in HD Android media player, allowing you to update them using a USB memory stick. Load your pictures and videos onto a USB memory stick then insert it into the display, which will copy the files into its internal flash memory. Once you remove the memory stick the screen will then start playing the pictures and videos in a continuous loop. They can also be updated remotely by upgrading your screen to be networked.



Temperature Control

The internal air-conditioning system allows the screens to be in constant use in an outward facing window. Internal fans keep their panels and other internal components at the optimum working temperature; ensuring a long and reliable life for your screens.

	Display Size	46 Inch	55 Inch	65 Inch
Panel	Resolution	1920x1080		
	Display Area (mm)	1018.1x572.7	1210x680.8	1429x804
	Aspect Ratio	16:9		
	Brightness (cd/m ²)	2,500		
	Blackening Defect Free	Up to 110°C (230°F)		
	Colour	16.7M		
	Viewing Angle	178°		
	Contrast Ratio	5000:1		4000:1
Audio	Speaker Type	2W, 5Ω (x2)		
AV Inputs	Video	HDMI, VGA		
	Audio	Audio Socket (3.5mm)		
Power	Power Consumption (W)	380	440	490
	Input Voltage	AC110~240V (50Hz~60Hz)		
Mechanical	Unit Size (WxHxD mm)	1080.5x635.1x132.7	1272.7x734.4x132.8	1491x866x123.5
	VESA Holes (mm)	600x400		
Environmental	Operating Temperature	0°C to 50°C		
	Storage Temperature	-30°C to 60°C		
	Operating Humidity	10% to 80%		
	Storage Humidity	5% to 95%		
Computer	Internal Media Player	Media Formats	Video (MPG, AVI, MP4, RM, RMVB, TS), Audio (MP3, WMA), Image (JPG, GIF, BMP, PNG)	
		Media Resolution	1920x1080/1080x1920	
		Internal Memory	6GB	
		CPU	Quad-Core Cortex-A17@1.61GHz	
		GPU	Mali-T760 MP4 @600MHz	
		RAM	2GB DDR3	
		ROM	8GB NAND	
		USB	USB2.0 HOST (x2)	
		LAN	10/100M Ethernet (Network Version Only)	
		Wi-Fi	802.11b/g/n/ac (Network Version Only)	
		OS	Android 5.1.1	
		Graphic Engine	OpenGL ES 1.1/2.0/3.0/3.1, OpenCL 1.1, Renderscript, Direct3D 11.1	
		Special Features	Images, Videos, Audio, Scrolling Text Message, On/Off Timer, On Screen Clock, Media Rotation	
Accessories	Included	Scheduling Software, Remote Control, User Manual		
	Optional	Network Upgrade, Wall Mount, Floor Stand/Trolley, Ceiling Mount, Table Stand		



Digital Rod Displays



Network Upgrade (go to page 61 for more information)

The screen can be upgraded to become a network screen that unlocks a host of new features including online updates and multiple media zones.

Digital Light Pockets

Our Android Digital Rod Displays are the light pockets of the future! With an integrated Android Media Player, LCD panel and built in mounting system these displays are all you need to beautifully display content in windows.

Integrated Android Media Player

The integrated Android Media Player allows for super fast updates. If required you can also run third party Digital Signage software via the Android PC board.



Synchronise Multiple Screens

Once networked you can synchronise content across multiple screens to change at the same time.

Plug and Play

Plug and Play is the easiest and most simple way to upload content to the screen. Simply load images and videos onto a USB stick, insert in the display, wait for your content to copy over and then remove. Your images and videos will now play in a continuous loop.



Commercial Grade

Designed for use in commercial applications this media player can run 24/7. There are no external buttons or controls to avoid tampering.

LED Backlight

Improves brightness and contrast as well as improving their lifespan and reducing the power consumption. Unlike other forms of light this technology is mercury free; making it even more eco-friendly. The panel and backlight have a lifespan in excess of 70,000 hours.

Rod/Cable Powered Displays

No power cable is required as these innovative screens are powered via the cables or rods on which the displays are mounted.



Rod/Cable Powered Displays



Plug and Play



Android Media Player

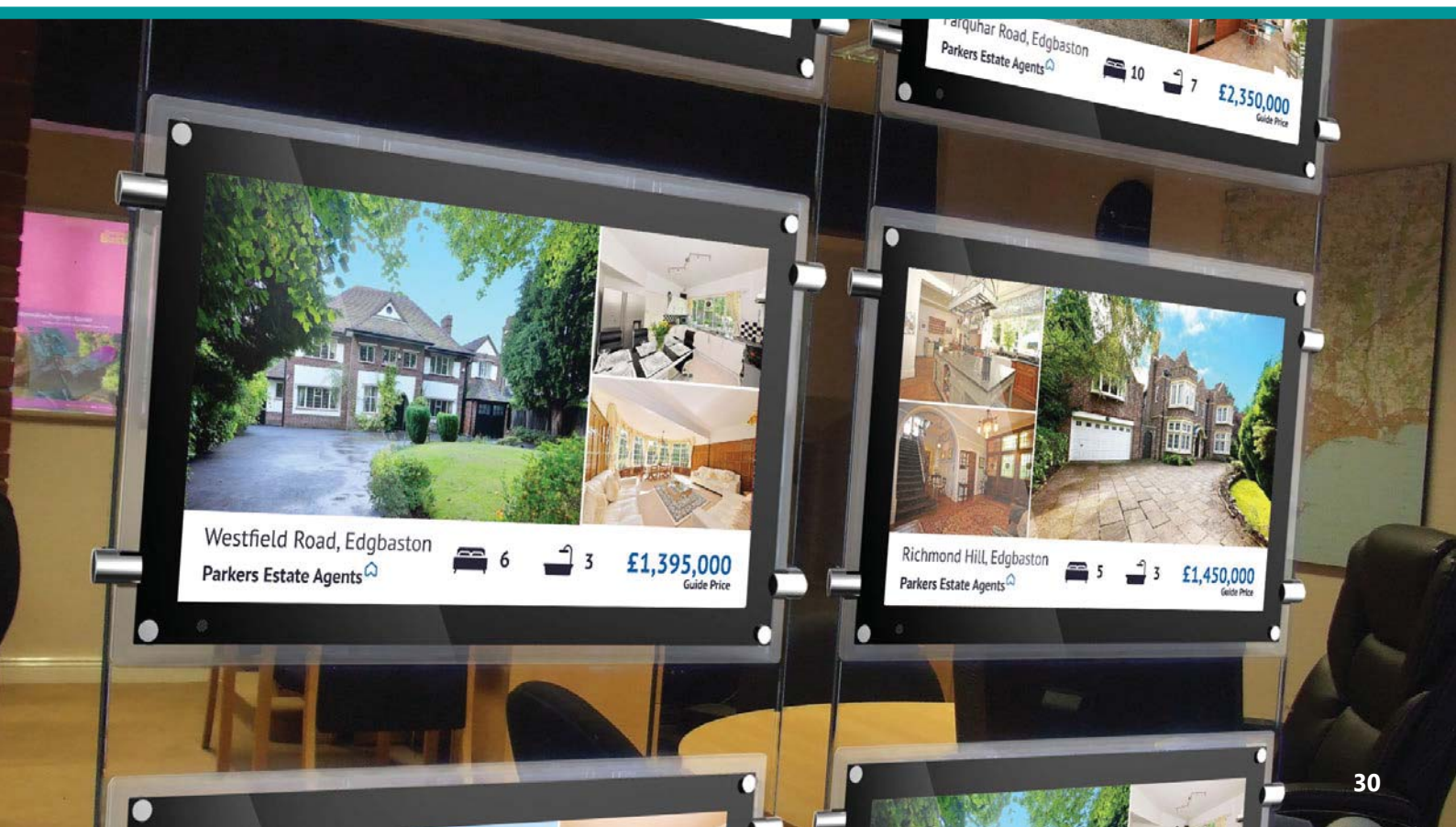


LED Backlight



24/7 Usage

Panel	Display Size	15 Inch	
	Resolution	1920x1080	
	Display Area (mm)	344.16x193.59	
	Aspect Ratio	16:9	
	Brightness (cd/m ²)	300	
	Colour	0.62M	
	Viewing Angle	89°	
Audio	Speaker Type	2W, 4Ω (x2)	
AV Inputs	Video	HDMI, VGA	
	Audio	Audio Socket (3.5mm)	
Power	Power Consumption (W)	18	
	Input Voltage	DC 12V	
Mechanical	Unit Size (WxHxD mm)	260x434x37.23	
	Package Size (WxHxD mm)	348x489x121.5	
	Net Weight (kg)	3.8	
	Gross Weight (kg)	5.2	
Environmental	Operating Temperature	0°C to 40°C	
	Storage Temperature	-10°C to 60°C	
	Operating Humidity	10% to 85%	
	Storage Humidity	5% to 95%	
Computer	Internal Media Player	Media Formats	Video (MPG, AVI, MP4, RM, RMVB, TS), Audio (MP3, WMA), Image (JPG, GIF, BMP, PNG)
		Media Resolution	1920x1080/1080x1920
		Internal Memory	6GB
		CPU	Quad-Core Cortex-A17@1.61GHz
		GPU	Mali-T760 MP4 @600MHz
		RAM	2GB DDR3
		ROM	8GB NAND
		USB	USB2.0 HOST (x2)
		LAN	10/100M Ethernet (Network Version Only)
		Wi-Fi	802.11b/g/n/ac (Network Version Only)
		OS	Android 5.1.1
	Graphic Engine	OpenGL ES 1.1/2.0/3.0/3.1, OpenCL 1.1, Renderscript, Direct3D 11.1	
Accessories	Included	Scheduling Software, Remote Control, Key, User Manual	
	Optional	Network Upgrade	



Outdoor Advertising Displays

Ultra High Brightness Panel

2,500cd/m² makes sure this display will always be seen whatever the weather. Over 8 times brighter than that of a standard domestic television to improve the displays image clarity in an outdoor environment.

Easy Updates

Update the screen via the simple 'plug and play' USB method. You can control the screen from anywhere in the world by upgrading to a Network version.



Lockable Wall Mount

The screen comes with a wall mount that allows the screen to be securely mounted in either landscape or portrait orientation.

Weather Proof

An IP65 Rating means the display is able to withstand all weather conditions; wet and dry and also features waterproof over molded AV connectors.



Ambient Light Sensor

The display has a light sensor that changes the screens brightness depending on the ambient light ensuring the most suitable brightness at any time.



Sunlight Readable



24/7 Usage



Android Media Player



Landscape or Portrait Orientation



Weather Proof



Network Upgrade (go to page 61 for more information)

The screen can be upgraded to become a network screen that unlocks a host of new features including online updates and multiple media zones.



Touch Screen Upgrade (go to page 65 for more information)

The screen can be upgraded to become a ten point PCAP Touch Screen that unlocks a host of new features including buttons and multiple playlists.



Modifications

The screens can be upgraded in various ways including the addition a camera or a 3G module.

Sturdy Enclosure

Made from mild steel, the enclosure is strong enough to protect the displays components from outside harm such as vandals.

Anti Reflective Glass

Diffuses direct sunlight making the display easily readable in bright weather conditions.

Dust Tight

The screen has the highest intrusion protection rating of IP65, meaning it is virtually impossible for dust to enter the enclosure.

Toughened Glass

Thermally toughened glass protects the screens internal components and adds an extra layer of security against vandals.

Advanced Temperature Control

Designed to run 24/7 in constant use the display has an advanced temperature control system to keep it running at the optimum temperature no matter the environment.



Vandal Proof



Free Wall Mount



Integrated Temperature Control



Steel Enclosure



Touch Screen Upgrade



Sunlight Readable

Brightness is paramount when using outdoor screens, these displays use commercial grade Ultra High Brightness panels (2,500 cd/m²); more than 8 times brighter than a standard home TV to allow easy readability in direct sunlight. The display also has an ambient light sensor that will alter the screens brightness based on the displays surrounding light levels. This leaves the screen with the best clarity while also conserving energy.



Outdoor Enclosure

Designed with robust, corrosion protected, casing to protect against the elements and the public. With an IP65 rating, it keeps out all airborne particles as well as being protected from any wet weather conditions and also feature waterproof over molded AV connectors. The enclosures are made from mild steel and have thermally toughened glass.



Temperature Control

The internal air-conditioning system allows the screens to be in constant use in an outdoor environment. Internal fans keep the panel and other internal components at the optimum working temperature; ensuring a long and reliable life for your display.

	Display Size	22 Inch	32 Inch	43 Inch	49 Inch	55 inch	65 Inch	
Panel	Resolution	1080x1920						
	Pixel Pitch	0.2537x0.2537	0.36375x0.363750	0.1615x0.4845	0.565x0.565	0.21x0.63	0.744 x 0.744	
	Display Area (mm)	270x477	396x702	526x934	603x1073	686x1215	803.5x1428.5	
	Aspect Ratio	16:9						
	Brightness (cd/m ²)	2,500						
	Colour	16.7 M						
	Viewing Angle	178°						
	Contrast Ratio	8000:1						
AV Inputs	Video	HDMI, VGA						
Power	Power Consumption (W)	130	190	250	300	430	550	
	Input Voltage	AC110~240V (50Hz~60Hz)						
Mechanical	Unit Size (WxHxD mm)	397x737x120	515x1040x130	670x1410x140	746x1500x140	817x1637x145	990x1910x140	
	VESA Holes (mm)	350x250	400x300	400x400/400x800	500x400/500x800	600x400/600x800	700x400/700x800	
	Net Weight (kg)	20.05	36.2	58.75	74	76.5	95	
Environmental	Operating Temperature:	-20 °C to 50 °C						
	Operating Humidity:	10% - 80%						
	Storage Temperature:	-30°C - 60°C						
	Storage Humidity:	5% - 90%						
	Enclosure Protection	IP65						
Computer	Internal Media Player	Media Formats	Video (MPG, AVI, MP4, RM, RMVB, TS), Audio (MP3, WMA), Image (JPG, GIF, BMP, PNG)					
		Media Resolution	1920x1080/1080x1920					
		Internal Memory	6GB					
		CPU	Quad-Core Cortex-A17@1.61GHz					
		GPU	Mali-T760 MP4 @600MHz					
		RAM	2GB DDR3					
		ROM	8GB NAND					
		USB	USB2.0 HOST (x2)					
		LAN	10/100M Ethernet (Network Version Only)					
		Wi-Fi	802.11b/g/n/ac (Network Version Only)					
		OS	Android 5.1.1					
		Graphic Engine	OpenGL ES 1.1/2.0/3.0/3.1, OpenCL 1.1, Renderscript, Direct3D 11.1					
Special	Images, Videos, Audio, Scrolling Text Message, On/Off Timer, On Screen Clock, Media Rotation							
Accessories	Included	AC Power Cable, Remote Control, User Manual						
	Optional	Touch Screen Upgrade, Network Upgrade, Camera						



Outdoor Freestanding Digital Posters

Ultra High Brightness Panel

2,500cd/m² makes sure this display will always be seen whatever the weather. Over 8 times brighter than that of a standard domestic television to improve the displays image clarity in an outdoor environment.

Easy Maintenance

The screen is designed to allow for easy and quick access using hydraulic cylinders when maintenance is required while still being secure.



Easy Updates

Update the screen via the simple 'plug and play' USB method. You can control the screen from anywhere in the world by upgrading to a Network version.

Weather Proof

An IP65 Rating means the display is able to withstand all weather conditions; wet and dry and also features waterproof over molded AV connectors.

Internal Locker

If you want to use the screen as a monitor you can connect external devices via HDMI and VGA and keep the devices in the discrete internal locker.

Advanced Temperature Control

Designed to run 24/7 in constant use the display has an advanced temperature control system to keep it running at the optimum temperature no matter the environment.



Removable Base

If desired the base can be removed before installation for a more streamline appearance.

Ambient Light Sensor

The display has a light sensor that changes the screens brightness depending on the ambient light ensuring the most suitable brightness at any time.



Sunlight Readable



24/7 Usage



Android Media Player



Landscape or Portrait Orientation



Weather Proof



Network Upgrade (go to page 61 for more information)

The screen can be upgraded to become a network screen that unlocks a host of new features including online updates and multiple media zones.



Touch Screen Upgrade (go to page 65 for more information)

The screen can be upgraded to become a ten point PCAP Touch Screen that unlocks a host of new features including buttons and multiple playlists.



Modifications

The screens can be upgraded in various ways including the addition a camera or a 3G module.

Sturdy Enclosure

Made from mild steel, the enclosure is strong enough to protect the displays components from outside harm such as vandals.

Anti Reflective Glass

Diffuses direct sunlight making the display easily readable in bright weather conditions.

Dust Tight

The screen has the highest intrusion protection rating of IP65, meaning it is virtually impossible for dust to enter the enclosure.

Toughened Glass

Thermally toughened glass protects the screens internal components and adds an extra layer of security against vandals.



Vandal Proof



Free Wall Mount



Integrated Temperature Control



Steel Enclosure



Touch Screen Upgrade



Sunlight Readable

Brightness is paramount when using outdoor screens, these displays use commercial grade Ultra High Brightness panels (2,500 cd/m²); more than 8 times brighter than a standard home TV to allow easy readability in direct sunlight. The display also has an ambient light sensor that will alter the screens brightness based on the displays surrounding light levels. This leaves the screen with the best clarity while also conserving energy.



Outdoor Enclosure

Designed with robust, corrosion protected, casing to protect against the elements and the public. With an IP65 rating, it keeps out all airborne particles as well as being protected from any wet weather conditions and also feature waterproof over molded AV connectors. The enclosures are made from mild steel and have thermally toughened glass.



Temperature Control

The internal air-conditioning system allows the screens to be in constant use in an outdoor environment. Internal fans keep the panel and other internal components at the optimum working temperature; ensuring a long and reliable life for your display.

	Display Size	49 Inch	55 Inch	
Panel	Resolution	1080x1920		
	Pixel Pitch	0.5592x0.5592	0.21x0.63	
	Display Area (mm)	603x1073	686x1215	
	Aspect Ratio	9:16		
	Brightness (cd/m ²)	2,500		
	Colour	1.06 Billion	1.073 G	
	Viewing Angle	178°		
	Contrast Ratio	8000:1		
AV Inputs	Video	HDMI, VGA		
Power	Power Consumption (W)	530	580	
	Input Voltage	AC110~240V (50Hz~60Hz)		
Mechanical	Unit Size (WxHxD mm)	870x1940x180	960x2020x200	
	Net Weight (kg)	120	150	
Environmental	Operating Temperature:	-20 °C to 50 °C		
	Operating Humidity:	10% - 80%		
	Storage Temperature:	-30°C - 60°C		
	Storage Humidity:	5% - 90%		
	Enclosure Protection	IP65		
Feature	Internal Media Player	Media Formats	Video (MPG, AVI, MP4, RM, RMVB, TS), Audio (MP3, WMA), Image (JPG, GIF, BMP, PNG)	
		Media Resolution	1080x1920	
		Internal Memory	6GB	
		CPU	Quad-Core Cortex-A17@1.61GHz	
		GPU	Mali-T760 MP4 @600MHz	
		RAM	2GB DDR3	
		ROM	8GB NAND	
		USB	USB2.0 HOST (x2)	
		LAN	10/100M Ethernet (Network Version Only)	
		Wi-Fi	802.11b/g/n/ac (Network Version Only)	
		OS	Android 5.1.1	
		Graphic Engine	OpenGL ES 1.1/2.0/3.0/3.1, OpenCL 1.1, Renderscript, Direct3D 11.1	
Accessories	Special	Images, Videos, Audio, Scrolling Text Message, On/Off Timer, On Screen Clock, Media Rotation		
	Included	AC Power Cable, Remote Control		
	Optional	Touch Screen Upgrade, Network Upgrade, Camera		



PCAP Touch Screens



10-Point PCAP Touch Technology

Using the most responsive and sensitive commercial touch technology available. Not affected by dust or debris on the screen surface.

Dual OS

The integrated PC has both Windows and Android operating systems installed. Seamlessly switch between the two for the most versatile Touch Screen solution on the market.

IPS Panel



With 450cd/m² the IPS panel shines brighter than any domestic television while delivering superior image quality and colour depth at 178° ultra wide viewing angle in both landscape and portrait orientations.

Built in Wi-Fi

As well as having an Ethernet port you can wirelessly connect to the internet thanks to the built in Wi-Fi.

Kiosk Touch Table

A Kiosk model is available for a true all-in-one PCAP Touch Screen solution. The ergonomic design allows users to interact and touch with the screen.

(43"-55" models only)



USB Ports

Attach third party peripherals to the internal PC via the screens two USB ports.

Commercial Grade

Designed for use in commercial applications this screen can run 24/7. There are no external buttons or controls to avoid tampering.



Integrated Dual OS



AV Inputs



24/7 Usage



No External PC Required



IPS Panel Technology



Touch CMS (go to page 65 for more information)

Our ground breaking new Touch Cloud Management System that puts you in control as you create, deploy and touch your very own content on screen. Create your custom layouts with our user friendly software that requires no knowledge of coding to use. Deploy the content from your PC direct to screen in a matter of seconds. Now all that is left to do is touch as you let your content do the talking.

Portrait/Landscape Orientation

The screen can be used in either a landscape or portrait orientation depending on your requirement.

LED Backlight

Improves brightness and contrast as well as improving their lifespan and reducing the power consumption. Unlike other forms of light this technology is mercury free; making it even more eco-friendly. The panel and backlight have a lifespan in excess of 70,000 hours.

Mirror Finish Version

A special version of the PCAP Touch Screen with a mirror finish is available in a 50" model.



Audio

The screen has two integrated speakers but also has an audio out port for connecting headphones or external speakers.

Connectivity

If you don't want to use the screen's integrated PC you can attach your own device, such as a media player or high performance PC, using the HDMI or VGA inputs.

Giant Tablet Styling

Designed to resemble a giant smart phone or tablet. The sleek and sexy look is achieved with a striking aluminium surround and stunning IPX1 rated edge-to-edge glass.



Landscape or Portrait Orientation



LED Backlight



Integrated Wi-Fi



Audio In/Out

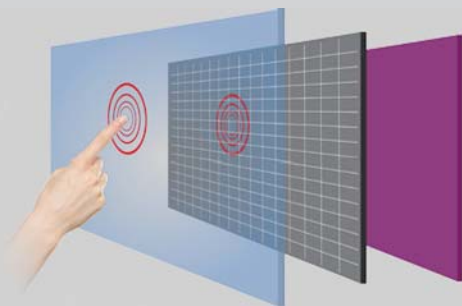


10 Touch Points



Dual OS

Experience the most versatile commercial Touch Screen on the market. With both Android and Windows operating systems installed on the integrated PC it cannot be beaten on flexibility. Seamlessly switch from your Windows desktop to the Android apps; this screen has it all in one convenient package. A Windows license will need to be purchased separately.



PCAP Touch

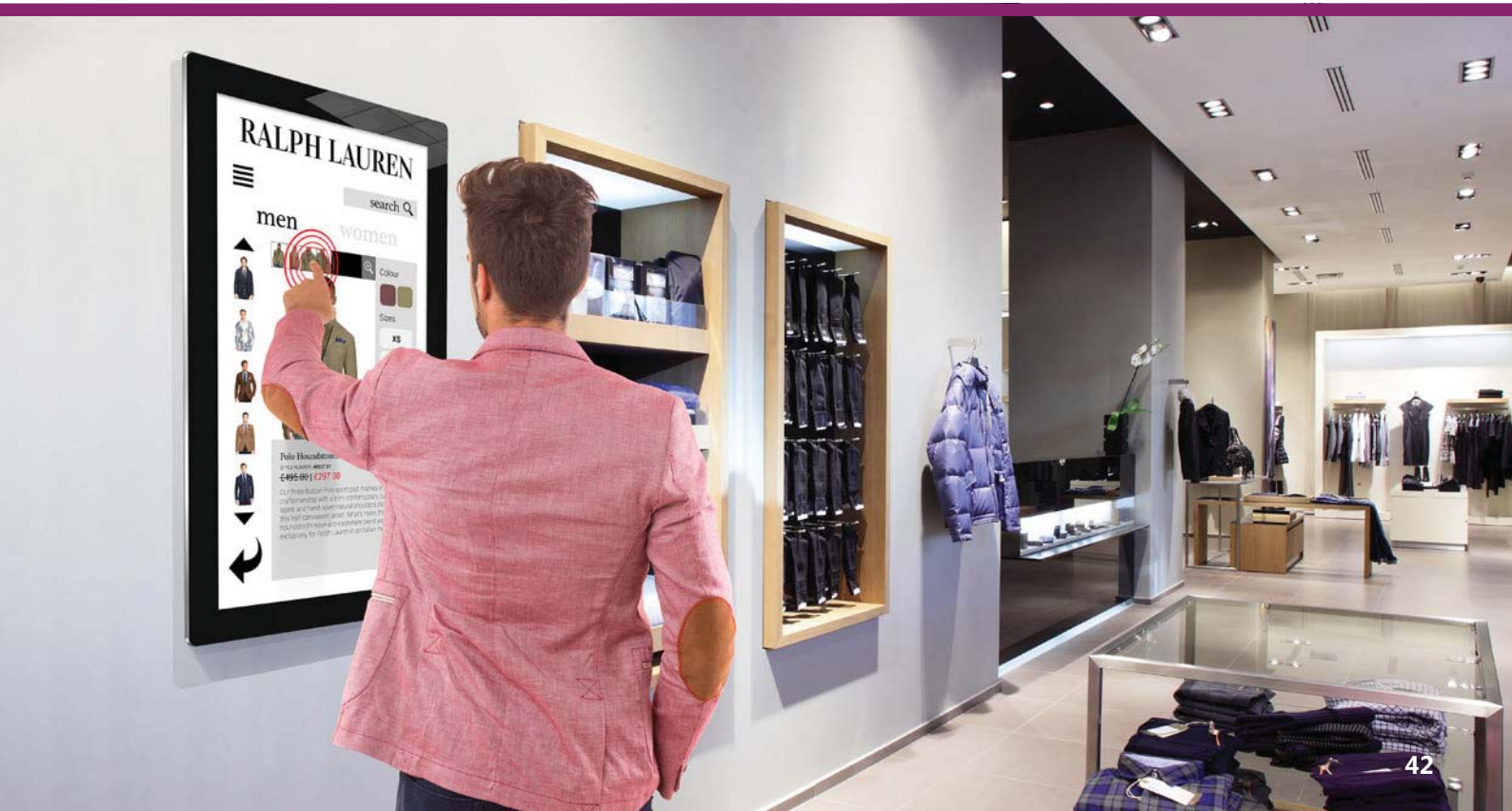
State of the art Projected Capacitive interactive technology offers the most responsive and sensitive touch experience available. Designed for commercial applications, PCAP touch technology works by fixing a sensor grid between a layer of cover glass and the LCD panel, when a finger touches the glass the grid detects the coordinates of the touch point. Unlike other touch technologies PCAP is not affected by dust or debris on the screen surface, allows for up to 10 touch points and offers superior optical quality.



Giant Tablet

These displays could be considered the largest commercial tablet on the market; but they are so much more. With a striking aluminium bezel and a sleek and sexy design, these displays always manage to catch the eye. Built with a strong tempered edge to edge glass front and a wide viewing angle, these commercial grade tablets are hard to miss and certainly stand out from the crowd.

	Display Size	22 Inch	32 Inch	43 Inch	50 Inch	55 Inch
Panel	Resolution	1920x1080				
	Display Area (mm)	478x269	701.4x395.8	942.5x530.5	1076x606	1211x682
	Aspect Ratio	16:9				
	Pixel Pitch (mm)	0.253x0.253	0.368x0.368	0.495x0.495	0.576x 0.576	0.634x 0.634
	Brightness (cd/m ²)	450				
	Colour	16.7M				
	Viewing Angle	178°				
	Contrast Ratio	5000:1				
Touch	Touch Technology	Projected Capacitive				
	Touch Points	10				
	Glass Hardness	7H minimum				
Audio	Speaker Type	2W, 5Ω (x2)				
AV Inputs/ Outputs	Inputs (when used as monitor)	HDMI, VGA, RS-232				
	Audio Input (when used as monitor)	Audio Socket (3.5mm)				
	Audio Output (internal PC)	Audio Socket (3.5mm)				
Power	Power Consumption (W)	22	52	65	75	85
	Input Voltage	AC110~240V (50Hz~60Hz)				
Mechanical	Unit Size (WxHxD mm)	590x383x50	814x504x69	1045.9x636.9x64.7	1186.6x716.6x65	1319.6x790.6x65
	VESA Holes (mm)	100x100	400x200			
Environmental	Operating Temperature	0°C to 50°C				
	Storage Temperature	-30°C to 60°C				
	Operating Humidity	10% to 80%				
	Storage Humidity	5% to 95%				
Computer	CPU	Intel® Atom™ (Quad-core) x5-Z8350 Processor (2M Cache, up to 1.92 GHz)				
	RAM	4GB				
	Graphic Engine	Intel® HD Graphics 400 (8th Gen, Supports DirectX11.2, OpenGL4.4 and OpenCL 2.0)				
	Hard Drive/Internal Memory (eMMC)	64GB				
	USB	2 x USB 2.0				
	LAN	10/100/1000 Ethernet				
	Wi-Fi	802.11b/g/n				
	OS	Android 5.1.1 Windows® 8 /8.1 64-bit, Windows® 10 64-bit, Windows 10 IoT Enterprise 64bit (licence purchased separately)				
	Other	No accessible buttons or controls				
Accessories	Included	Remote Control, User Manual, Power Cable, USB to USB Cable, Wi-Fi Aerial				
	Optional	Touch CMS, Special Wall Mount, Floor Stand/Trolley, Ceiling Mount, Table Stand				



Infrared Freestanding Touch Screen Posters



10-Point Infrared Touch Technology

Using the most popular and cost effective commercial touch technology available. Durable and reliable and can be used with gloves.

Dual OS

The integrated PC has both Windows and Android operating systems installed. Seamlessly switch between the two for the most versatile Touch Screen solution on the market.



IPS Panel

With 450cd/m² the IPS panel shines brighter than any domestic television while delivering superior image quality and colour depth at 178° ultra wide viewing angle in portrait orientation.

Built in Wi-Fi

As well as having an Ethernet and LAN ports you can wirelessly connect to the internet thanks to the built in Wi-Fi.

Internal Locker

If you don't want to use the screen's integrated PC, there is space to fit a small PC or media player inside the lockable compartment, where the necessary AV and USB connections can be made. AV inputs include VGA, HDMI, DVI, YPbPr, Video IN and RGB/HV.

Free Integrated Castors

Designed with discreet retractable castors for easy manoeuvrability; once the screen is in position the wheels can be retracted.



Integrated Dual OS



AV Inputs



24/7 Usage



No External PC Required



IPS Panel Technology



Touch CMS (go to page 65 for more information)

Our ground breaking new Touch Cloud Management System that puts you in control as you create, deploy and touch your very own content on screen. Create your custom layouts with our user friendly software that requires no knowledge of coding to use. Deploy the content from your PC direct to screen in a matter of seconds. Now all that is left to do is touch as you let your content do the talking.

Audio

The screen has two integrated speakers but also has an audio out port for connecting headphones or external speakers.

LED Backlight

Improves brightness and contrast as well as improving their lifespan and reducing the power consumption. Unlike other forms of light this technology is mercury free; making it even more eco-friendly. The panel and backlight have a lifespan in excess of 70,000 hours.

Giant Tablet Styling

Designed to resemble a giant smartphone or tablet. The sleek and sexy look is achieved with striking rounded corners.

Commercial Grade

Designed for use in commercial applications this screen can run 24/7. There are no external buttons or controls to avoid tampering.



Free Integrated Castors



LED Backlight



Integrated Wi-Fi



Audio In/Out

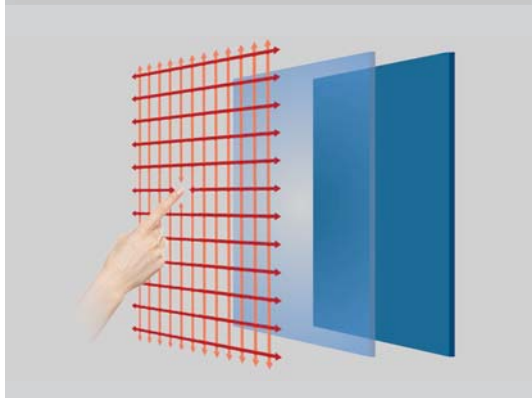


10 Touch Points



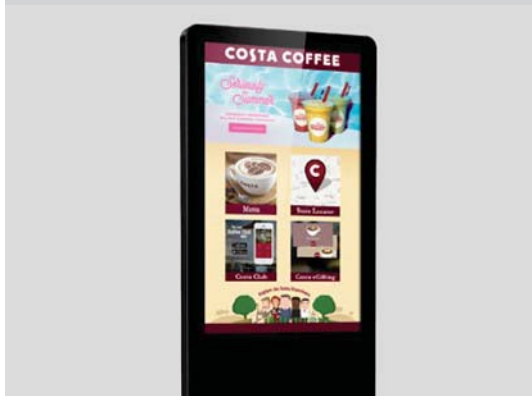
Dual OS

Experience the most versatile commercial Touch Screen on the market. With both Android and Windows operating systems installed on the integrated PC it cannot be beaten on flexibility. Seamlessly switch from your Windows desktop to the Android apps; this screen has it all in one convenient package. A Windows license will need to be purchased separately.



Infrared Touch

Infrared Touch Screens use the most robust and durable touch technology available. Designed for commercial use, infrared touch technology works by embedding LED lights and sensors into the bezel of a monitor above the glass. These LED's beam a signal across to the corresponding sensor on the other side forming an invisible grid. When the grid is broken by a finger, or other solid object, the sensors can detect the touch point. Infrared Touch Screens are by far the most cost effective solution on the market.



Commercial Grade

A stunning commercial grade Touch Screen, this display has been designed to be used in commercial applications. With a lifespan in excess of over 70,000 hours the Touch Screen can be in constant use 24/7. A robust enclosure protects the high quality panel and components and with no external buttons or controls you can be assured the Touch Screen cannot be tampered with.

	Display Size	50 inch	55 inch
Panel	Resolution	1080x1920	
	Display Area (mm)	625.4x1106.4	686.4x1215.8
	Aspect Ratio	9:16	
	Pixel Pitch (mm)	0.565x 0.565	0.6342x 0.6342
	Brightness (cd/m ²)	500	
	Colour	16.7M	
	Viewing Angle	178°	
	Contrast Ratio	5000:1	
Touch	Touch Technology	Infrared	
	Touch Points	10	
	Glass Hardness	7H minimum	
Audio	Speaker Type	2W, 5Ω (x2)	
AV Inputs	Video	HDMI, VGA	
	Audio	Audio Socket (3.5mm)	
Power	Input Voltage	AC110~240V (50Hz~60Hz)	
Mechanical	Unit Size (WxHxD mm)	766x1850x79.5	827x1947x79.5
	Footprint (WxD mm)	779x400	840x400
Environmental	Operating Temperature	0°C to 50°C	
	Storage Temperature	-30°C to 60°C	
	Operating Humidity	10% to 80%	
	Storage Humidity	5% to 95%	
Computer	CPU	Intel® Atom™ (Quad-core) x5-Z8350 Processor (2M Cache, up to 1.92 GHz)	
	RAM	4GB	
	Graphic Engine	Intel® HD Graphics 400 (8th Gen, Supports DirectX11.2, OpenGL4.4 and OpenCL 2.0)	
	Hard Drive/Internal Memory (eMMC)	64GB	
	USB	2 x USB 2.0	
	LAN	10/100/1000 Ethernet	
	Wi-Fi	802.11b/g/n	
	OS	Android 5.1.1 Windows® 8 /8.1 64-bit, Windows® 10 64-bit, Windows 10 IoT Enterprise 64bit (licence purchased separately)	
	Other	No accessible buttons or controls	
Accessories	Included	Remote Control, User Manual, Power Cable, USB to USB Cable, Wi-Fi Aerial	
	Optional	Touch CMS	



Interactive Touch Display

Stunning Enclosure*

The flawless enclosure is crafted from black aluminium and assembled in segments so the enclosure can remain sexy and sleek with its rounded corners. It also has a polymer rear cover to keep it super slim and lightweight.

Connectivity

The rear of the screen features AV inputs that allow for more permanent connections such as AV in and out, Audio in and out, RS-232, VGA, DP, SPDIF, HDMI, YPbPr, USB.



Etched Glass

Improves tactility for smooth touch gestures. The anti-glare nano coating also diffuses external light so that images and videos are much clearer.

Built-in Android PC

Featuring a powerful integrated PC running Android 5.0 with 2GB RAM and 16GB ROM.



Easy Access Ports and Controls*

Quickly and conveniently connect your own laptop to the screen using the front facing HDMI and Touch USB ports. There are also USB ports connected to the internal PC for easy access.

* Excludes 55" model



Integrated Android PC



Optional OPS PC



Integrated Wi-Fi



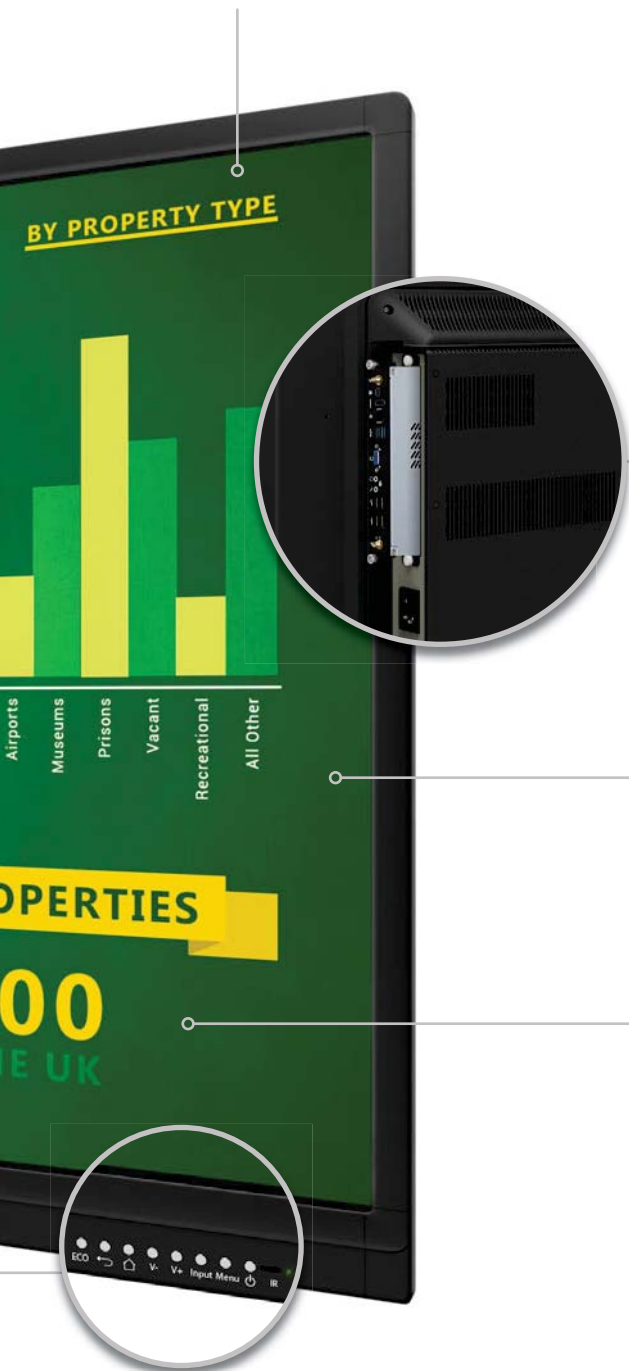
5 Year Warranty



10 Touch Points

Free MeetingPad Software

State of the art 'MeetingPad' Software brings the Interactive Touch Display to life. No additional hardware is required as you wireless mirror and fileshare between your devices and the screen. The wireless features are all compatible with Android, Apple and Windows devices and even allow you to annotate the screen from your device.



Optional OPS PC

For a seamless solution an OPS PC can be integrated into the rear of the display. This allows you the flexibility to choose between Android and Windows and switch effortlessly between the two. Available with a cost effective OPS PC or a more powerful OPS PC.

LED Backlight

The long lasting eco-friendly LED backlight focusses on optimum brightness and contrast; causing no eye strain as you would get from projectors. The panel and backlight have a lifespan in excess of 80,000 hours.

Freeze Frame Function

While your laptop is connected you can freeze the image on screen so that you can continue to work independently on your laptop.



Stylus Set Included

Two special 'Smart Pens' are included as well as an extendable pointer and two extra magnetic styluses for free.

Wireless Mirroring

Connect to the Touch Screen from any smartphone, tablet, laptop, PC or Mac wirelessly. Using mobile devices you can mirror the display in both directions, and even take control of the Touch Screen, from anywhere on the same Wi-Fi network. Mirroring via 5GHz allows users the best wireless experience available with fast mirroring and less interference. All of this without the need of additional wires or transmitters.

File Sharing

Once your device and the Touch Screen are wirelessly connected you can quickly and easily share content to and from your device. Use the Eshare app to show videos, images and audio files stored on your smartphone, tablet, laptop or PC. You can also share files from the Touch Screen to your device using various methods such as email or scanning a QR code. Files can easily flow between the Touch Screen and your devices.

No Additional Hardware Required

Wirelessly mirror and share files straight from your device without the need for any additional hardware, such as transmitters or wires. However there is a handy Screen Projection Dongle USB included that makes mirroring from your PC or Mac fast and simple, without the need to install any software.



No External PC Required



Anti Glare Glass



LED Backlight



Integrated 16GB Storage



Extensive AV Connectivity



Full Android Control

With both Android and Windows operating systems installed on the integrated PC the Interactive Touch Display cannot be beaten on flexibility. Seamlessly switch your operating system with just the push of a button. With the huge number of apps available for Android and the world's most popular operating system in Windows the display is ready to take your meetings and lessons to the next level.



Wireless Mirroring

Mirror what is on your Windows, Android or Apple device without the need for messy cables with the wireless mirroring feature this display offers. Great for presenting and sharing content during meetings. Mirroring the display from your mobile, tablet or laptop has never been easier.



Freeze-Frame Function

If you are running the Interactive Touch Display from your laptop you can "freeze" the content mirrored from your device, This allows you to use unplug your laptop and use it independently from the screen with the content still being on display.



Optional Windows OPS PC

Experience the best of both worlds with an upgrade to add a Windows OPS PC directly into the rear of your Interactive Touch Display. Having the world most popular operating system in Windows just a switch away from our 'MeetingPad' software offers the best in flexible working. Upgrading allows you to save space and avoid a tangle of messy wires that you use to get with attaching other laptops or PCs to your Interactive Touch Display.

	Display Size	55 inch	65 inch	70 inch
Panel	Resolution	1920x1080		
	Display Area (mm)	1213.8x684.4	1428.48x803.52	1538.88x865.62
	Aspect Ratio	16:9		
	Pixel Pitch (mm)	0.6342x 0.6342	0.744 x 0.744	0.8015x0.8015
	Brightness (cd/m ²)	500		
	Colour	16.7M		
	Colour Depth	8 Bit		
	Viewing Angle	178°		
	Contrast Ratio	4000:1	5000:1	
	Lifespan	80,000 Hours		
Touch	Touch Technology	Infrared		
	Touch Points	10		
	Glass Hardness	7H minimum		
	Response Time	≤5ms		
	Touch Point Accuracy	±1.5mm		
	Touch Resolution	32768x32768		
Audio	Speaker Output	15W, 8Ω (x2 Front)		
AV Inputs/Outputs	Front Inputs	N/A	Touch USBx1, HDMI x1, USB x3	
	Side Inputs	DisplayPort, Touch USB, HDMI x 2, VGA, Audio In, USB 3.0 x 2, AV In, YPbPr, SD Card, RS232		
	Outputs	AV Out, Audio Out, SPDIF		
	Input Voltage	AC110~240V (50Hz~60Hz)		
Mechanical	Unit Size (WxHxD mm)	1282x752.2x74	1516.5x930.46x105	1633.1x997.7x112.8
	VESA Holes (mm)	400x400	400x400/400x600	
	Net Weight (Kg)	40.05	46.6	65.5
	Gross Weight (Kg)	48.9	65.5	76
	Package Size	1443x928x250	1750x1160x340	1865x1242x340
Environmental	Operating Temperature	0°C to 50°C		
	Storage Temperature	-30°C to 60°C		
	Operating Humidity	10% to 80%		
	Storage Humidity	5% to 95%		
Computer	CPU	ARM Quad-core Cortex-A53 1.4GHz		
	RAM	2GB DDR3		
	Graphic Engine	Mali450MP4 (6-core) 450MHz		
	Hard Drive/Internal Memory (eMMC)	16GB		
	USB	2 x USB 2.0	USB 3.0 x 2, USB 2.0 x3	
	LAN	10/100M Ethernet		
	Wi-Fi	802.11b/g/n/ac		
	OS	Android 5.0.1		
Accessories	Included	User Manual (CD), Remote Control, Power Cable, USB A Male to USB A Male Cable(x1), USB A Male to USB B Male Cable (x1), Wi-Fi Aerial (x2), HDMI Cable, Magnetic Whiteboard Pen (x 2), Smart Pen (x2), Telescopic Pointer (x1), USB Screen Projection Dongle (x2)		
	Optional	Wall Mount, Floor Stand/Trolley, Ceiling Mount		



POS Android Advertising Displays



Plug and Play

Plug and Play is the easiest and most simple way to upload content to the screen. Simply load images and videos onto a USB stick, insert in the display. Wait for your content to copy over and then remove. Your images and videos will now play in a continuous loop.

Integrated Android Media Player

The integrated Android Media Player allows for super fast updates. If required you can also run third party Digital Signage software via the Android PC board.

Commercial Grade

Designed for use in commercial applications this screen can run 24/7. There are no external buttons or controls to avoid tampering.

RS-232 Control

Control, scale and customise your display over long and short distances using RS-232.



Integrated Mounting Solution

The rear of the display includes an integrated and secure screw based mounting solution.



Plug and Play



24/7 Usage



Free Scheduling Software



RS-232 Control



Android Media Player



Network Upgrade (go to page 61 for more information)

The screen can be upgraded to become a network screen that unlocks a host of new features including online updates and multiple media zones.



Touch Screen Upgrade (go to page 65 for more information)

The screen can be upgraded to become a ten point PCAP Touch Screen that unlocks a host of new features including buttons and multiple playlists.



Power over Ethernet

Power the screen using an Ethernet cable or the power cable provided.

LED Backlight

Improves brightness and contrast as well as improving their lifespan and reducing the power consumption. Unlike other forms of light this technology is mercury free; making it even more eco-friendly. The panel and backlight have a lifespan in excess of 70,000 hours.

Monitor Version

If you would like to run the screen from an external source. A separate monitor POS screen is available with a HDMI port

Portrait/Landscape Orientation

The screen can be used in either a landscape or portrait orientation depending on your requirement.



Power over Ethernet (PoE)



LED Backlight



Eco Power Timer



Landscape or Portrait Orientation



Touch Screen Upgrade



Easy Updates

Updating the display is easy. It is done by loading your images and videos onto a USB stick, simply plug the USB into the display, let the media files copy and then remove the stick. No additional hardware or cables are needed. You can also upgrade your display to be networked so you can remotely update your screen via LAN or Wi-Fi via our cloud based CMS.



Power Over Ethernet

Your screen can either be powered using the power cable provided or by using an Ethernet cable. This makes the display extremely flexible, allowing you to supply power to the screen using the more convenient of the two methods.



RS-232 Control

Once your screen is connected via RS-232 you can control, scale and customise your display remotely over short and long distances.



PCAP Touch Screen Upgrade

You can upgrade your display to be a PCAP Touch Screen to increase audience engagement. Your customers can interact with the display to explore a product range or even fill out data capture forms. Adding touch capabilities can really add another dimension to your advertising.

Panel	Display Size		10 Inch
	Resolution		1280x800
	Display Area (mm)		217.95x136.65
	Aspect Ratio		16:10
	Brightness (cd/m ²)		450
	Colour		16.7M
	Colour Depth		10 Bit
	Viewing Angle		178°
Audio	Speaker Type		1.5W, 8Ω
Power	Power Consumption (W)		18
	Input Voltage		AC110~240V (50Hz~60Hz)
	PoE Mode		24V Passive
Mechanical	Unit Size (WxHxD mm)		239.9x169.2x26.8
	VESA Holes (mm)		50x50
	Package Size (WxHxD mm)		333x278x75
	Net Weight (kg)		1.5
	Gross Weight (kg)		2.2
	Working Temperature		0 °C to 50 °C
Computer	Internal Media Player	Media Formats	Video (MPG, AVI, MP4, RM, RMVB, TS), Audio (MP3, WMA), Image (JPG, GIF, BMP, PNG)
		Media Resolution	1920x1080/1080x1920
		Internal Memory	6GB
		CPU	Quad-Core Cortex-A7 , up to 1.3GHz (RK3126)
		GPU	ARM Mali-400MP2
		RAM	1GB DDR3
		ROM	6GB NAND
		USB	USB2.0 HOST x1
		Wi-Fi	802.11b/g/n
		OS	Android 5.0.2
		Graphic Engine	OpenGL ES 1.1/2.0
Accessories	Optional	Cloud Network Software, PCAP Touch Screen Upgrade	



Ultra-Wide Stretched Displays

Extended Stretched Format

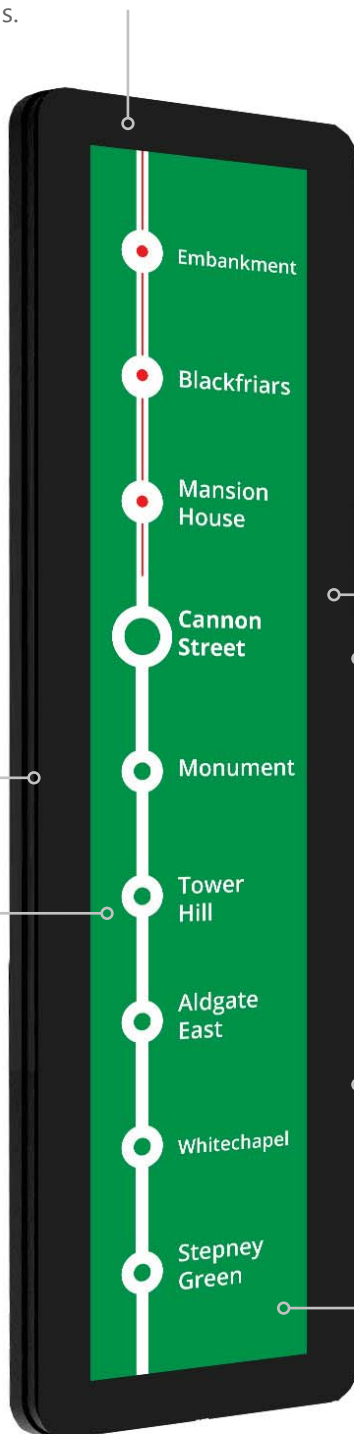
Content is delivered in the ultra-wide 16:3 aspect ratio, at a resolution of 1920 x 360, ideal for tall or narrow locations.

Plug and Play

Plug and Play is the easiest and most simple way to upload content to the screen. Simply load images and videos onto a USB stick, insert in the display, wait for your content to copy over and then remove. Your images and videos will now play in a continuous loop.

LED Backlight

Improves brightness and contrast as well as improving their lifespan and reducing the power consumption. Unlike other forms of light this technology is mercury free; making it even more eco-friendly. The panel and backlight have a lifespan in excess of 70,000 hours.



Portrait/Landscape Orientation

The screen can be used in either a landscape or portrait orientation depending on your requirement.



Network Upgrade (go to page 61 for more information)

The screen can be upgraded to become a network screen that unlocks a host of new features including online updates and multiple media zones.

Integrated Android Media Player

The integrated Android Media Player allows for super fast updates. If required you can also run third party Digital Signage software via the Android PC board.



Commercial Grade

Designed for use in commercial applications this media player can run 24/7. There are no external buttons or controls to avoid tampering.

Connect Devices

If you want to use the screen as a monitor you can connect devices via HDMI and VGA.

* Other sizes available on request



Ultra Wide Stretch Display



Plug and Play



Android Media Player

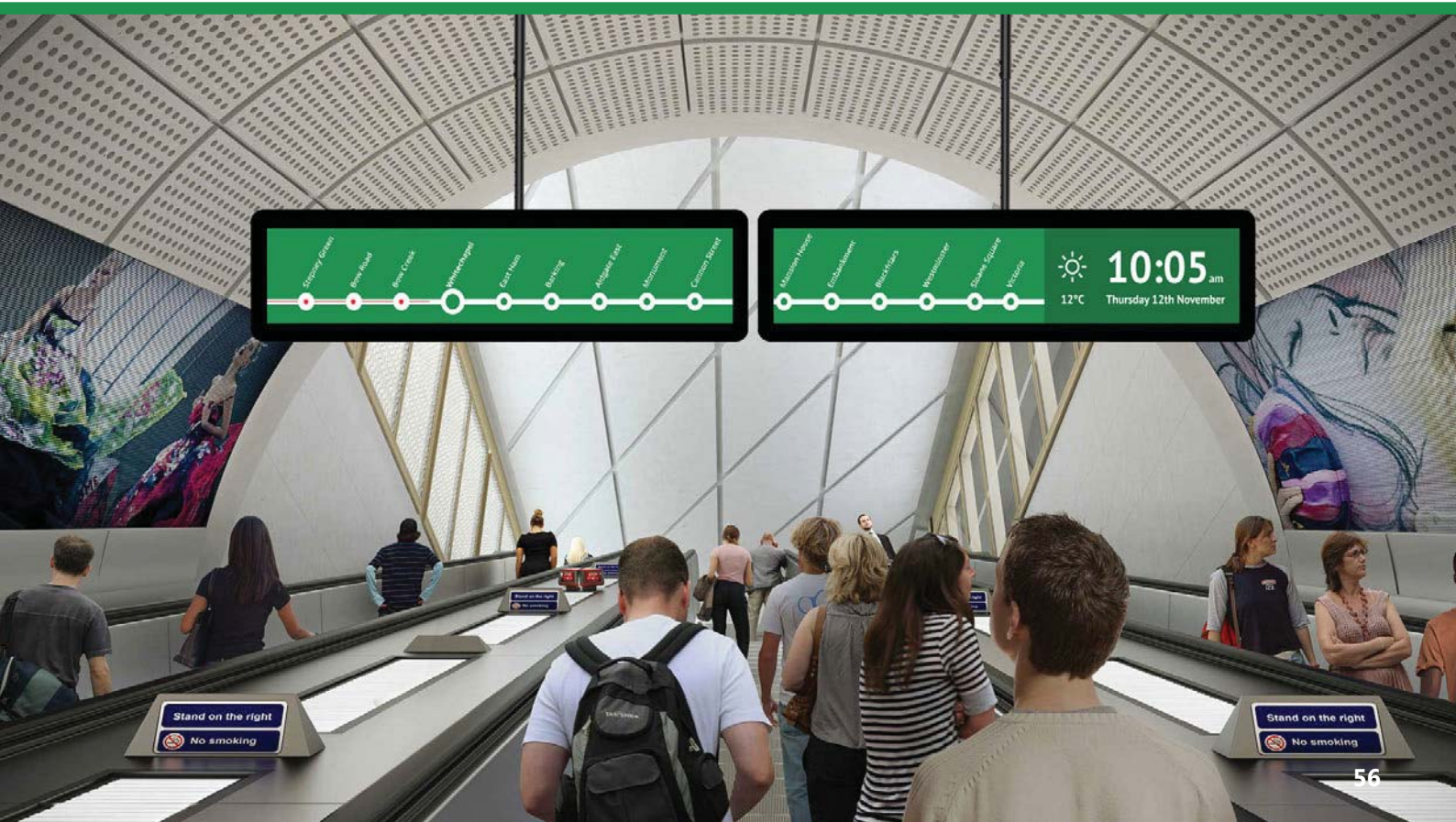


Landscape or Portrait Orientation



24/7 Usage

Panel	Display Size		28 Inch
	Resolution		1920x360
	Display Area (mm)		702x135
	Aspect Ratio		16:3
	Brightness (cd/m ²)		700
	Colour		16.7M
	Viewing Angle		89°
	Contrast Ratio		1200:1
Audio	Speaker Type		2W, 5Ω (x2)
AV Inputs	Video		HDMI, VGA
	Audio		Audio Socket (3.5mm)
Power	Power Consumption (W)		22
	Input Voltage		DC 12V
Mechanical	Unit Size (WxHxD mm)		774.6x207.6x51.5
	Package Size (WxHxD mm)		308.6x877.1x128
	VESA Holes (mm)		75x75
	Net Weight (kg)		5.7
	Gross Weight (kg)		7.3
Environmental	Operating Temperature		0°C to 40°C
	Storage Temperature		-10°C to 60°C
	Operating Humidity		10% to 85%
	Storage Humidity		5% to 95%
Computer	Internal Media Player	Media Formats	Video (MPG, AVI, MP4, RM, RMVB, TS), Audio (MP3, WMA), Image (JPG, GIF, BMP, PNG)
		Media Resolution	1920x1080/1080x1920
		Internal Memory	6GB
		CPU	Quad-Core Cortex-A17@1.61GHz
		GPU	Mali-T760 MP4 @600MHz
		RAM	2GB DDR3
		ROM	8GB NAND
		USB	USB2.0 HOST (x2)
		LAN	10/100M Ethernet (Network Version Only)
		Wi-Fi	802.11b/g/n/ac (Network Version Only)
		OS	Android 5.1.1
		Graphic Engine	OpenGL ES 1.1/2.0/3.0/3.1, OpenCL 1.1, Renderscript, Direct3D 11.1
Accessories	Included		Scheduling Software, Remote Control, User Manual
	Optional		Network Upgrade, Special Wall Mount, Floor Stand/Trolley, Ceiling Mount, Table Stand



Standalone Android Media Player



Network Upgrade (go to page 61 for more information)

The Media Player can be upgraded to become a network Media Player that unlocks a host of new features including online updates and multiple media zones.

Commercial Grade

Designed for use in commercial applications this media player can run 24/7. There are no external buttons or controls to avoid tampering.

Integrated Android Media Player



The integrated Android Media Player allows for super fast updates. If required you can also run third party Digital Signage software via the Android PC board.



Environmentally Friendly Power Timer

Allows for a reduced power usage in those hours that the displays are not required. Set daily or weekly On/Off times for your displays.

Plug and Play

Plug and Play is the easiest and most simple way to upload content to the screen. Simply load images and videos onto a USB stick, insert into the Media Player. Wait for your content to copy over and then remove. Your images and videos will now play in a continuous loop.



Plug and Play



24/7 Usage



Android Media Player



Free Scheduling Software



AV Inputs

		Standalone Android Media Player	
AV Outputs	Video	HDMI, VGA	
	Audio	Stereo Analog Audio Socket (3.5mm)	
Power	Power Consumption (W)	<5	
	Input Voltage	AC110~240V (50Hz~60Hz)	
Mechanical	Unit Size (WxHxD mm)	162.5x35x103	
	Dimension of Box (WxHxD mm)	237.5x165x129	
	Net weight (Kg)	0.35	
	Gross Weight (Kg)	0.55	
Environmental	Operating Temperature	0°C to 50°C	
	Storage Temperature	-30°C to 60°C	
	Operating Humidity	10% to 80%	
	Storage Humidity	5% to 95%	
Computer	Internal Media Player	Media Formats	Video (MPG, AVI, MP4, RM, RMVB, TS), Audio (MP3, WMA), Image (JPG, GIF, BMP, PNG)
		Media Resolution	1920x1080/1080x1920
		Internal Memory	6GB
		CPU	Quad-Core Cortex-A17@1.61GHz
		GPU	Mali-T760 MP4 @600MHz
		RAM	2GB DDR3
		ROM	8GB NAND
		USB	USB2.0 HOST (x2)
		LAN	10/100M Ethernet
		Wi-Fi	802.11b/g/n/ac
		OS	Android 5.1.1
		Graphic Engine	OpenGL ES 1.1/2.0/3.0/3.1, OpenCL 1.1, Renderscript, Direct3D 11.1
		Special Features	Images, Videos, Audio, Scrolling Text Message, On/Off Timer, On Screen Clock, Media Rotation
Accessories	Included	HDMI Cable, Scheduling Software, Remote Control, User Manual	





Touch CMS (go to page 65 for more information)

Our ground breaking new Touch Cloud Management System that puts you in control as you create, deploy and touch your very own content that you can send via your Android Cloud Media Player for your Touch Monitor in a matter of seconds.

Simple Network Solution

No software installation is required once you have connected the Cloud Network Media Players to your screens. The screens in your network can all be under one roof or as part of a national or global network. Just by logging in to our cloud based CMS you can control your screens individually or as part of a network.

Integrated Android Media Player

The integrated Android Media Player allows for super fast updates. If required you can also run third party Digital Signage software via the Android PC board.



Commercial Grade

Designed for use in commercial applications this media player can run 24/7. There are no external buttons or controls to avoid tampering.

Cloud Based Digital Signage Software

Transform your screen into a remotely updateable advertising display with our Network Media Player. With our online CMS you can upload content, design multimedia layouts, create your own personalised playlists and schedules as you take control of your screen.

Broadcast Live TV

It couldn't be simpler to integrate live TV with Digital Signage with our specialised Media Player with Live Inputs. Simply connect a TV set-top box or desired input source into the media player via HDMI. Then connect the media player to a screen via HDMI and you can control everything via our CMS.



Online CMS Updates



24/7 Usage



Android Media Player



Wi-fi/LAN Connection



Broadcast Live TV Feed

		Android Cloud Network Media Player	Android Cloud Network Media Player with Live Input	
AV Outputs	Video	HDMI, VGA		
	Audio	Stereo Analog Audio Socket (3.5mm)		
AV Inputs	Video	N/A	HDMI, VGA	
	Audio	N/A	Stereo Analog Audio Socket (3.5mm)	
Power	Power Consumption (W)	<5		
	Input Voltage	AC110~240V (50Hz~60Hz)		
Mechanical	Unit Size (WxHxD mm)	162.5x35x103	189x113.36x39.6	
	Dimension of Box (WxHxD mm)	201x134x111.4		
	Net weight (Kg)	0.35		
	Gross Weight (Kg)	0.55		
Environmental	Operating Temperature	0°C to 50°C		
	Storage Temperature	-30°C to 60°C		
	Operating Humidity	10% to 80%		
	Storage Humidity	5% to 95%		
Computer	Internal Media Player	Media Formats	Video (MPG, AVI, MP4, RM, RMVB, TS), Audio (MP3, WMA), Image (JPG, GIF, BMP, PNG)	
		Media Resolution	1920x1080/1080x1920	
		Internal Memory	6GB	
		CPU	Quad-Core Cortex-A17@1.61GHz	Quad-Core Cortex-A9 @1.6GHz
		GPU	Mali-T760 MP4 @600MHz	Mali-400 MP4 @600MHz
		RAM	2GB DDR3	1GB DDR3
		ROM	8GB NAND	
		USB	USB2.0 (x2)	USB2.0 (x3)
		LAN	10/100M Ethernet	
		Wi-Fi	802.11b/g/n	
		OS	Android 5.1.1	Android 4.2.2
		Graphic Engine	OpenGL ES 1.1/2.0/3.0/3.1, OpenCL 1.1, Rendscript, Direct3D 11.1	OpenGL ES 1.1/2.0, OpenVG 1.1
		Special Features	Images, Videos, Audio, Scrolling Text Message, On/Off Timer, On Screen Clock, Media Rotation	
Accessories	Included	HDMI Cable, Scheduling Software, Remote Control, User Manual		



Network CMS

Our Content Management System allows absolutely anybody to design content without having to write a single line of code. The easy to use interface puts the power in your hands to build your own content that your audience will love to engage with. Use your pre-existing images, videos and websites as you create your custom layouts. Deploy your content to anywhere in the world with just the push of a button. You can also send remote commands, designate specific user privileges, schedule your content to appear at set times and dates and even preview your content from the comfort of your PC.

Backgrounds

Set an image or a colour to frame your media zones.

Images

Multiple images playing in a continuous rolling loop.

Videos

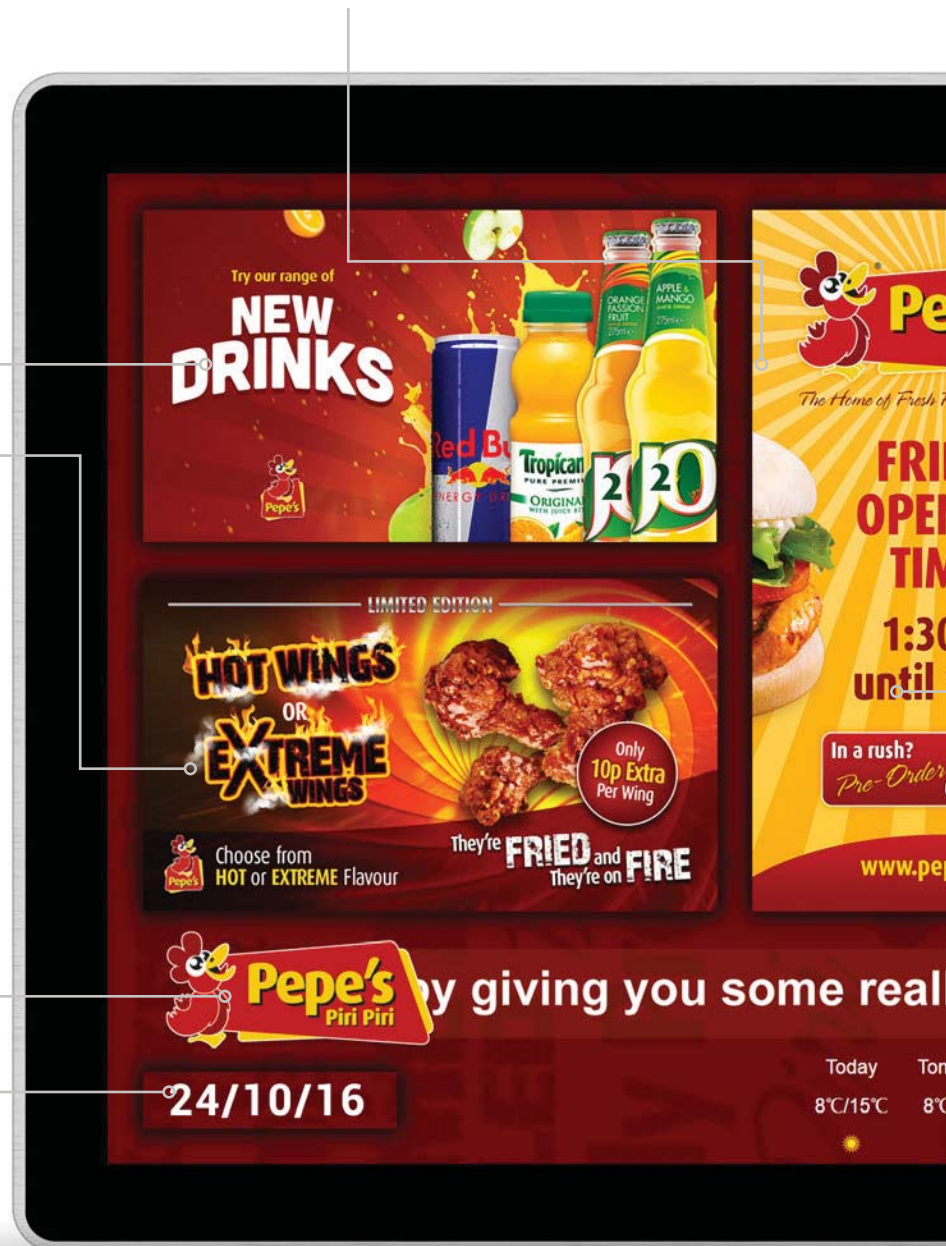
Multiple videos playing in a continuous rolling loop.

Logo

Brand your layout with your logo which will stay on top of all other zones.

Date

Display the date in a variety of formats, sizes and in whatever colour you want.



Live Feed

With our Android Media Player with Live Inputs (page 55) one of your zones can now display a live feed from an external source. So for example you can connect a freeview set top box and show Live TV in one of your zones.



Static Text

Allows you to input custom text values. Edit the font, colour and size of your text.

Webpages

Allows you to display a live webpage such as a social media page or live web feed.



Office Documents & PDF's

Display PDF files alongside Microsoft Word, Excel and PowerPoint files.

Scrolling Text

Display a ticker tape message or live RSS feed. From here you can adjust the font, size, colour, speed and direction of the text.

Time

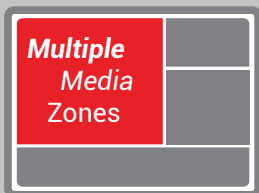
Display the time in a variety of formats, sizes and in whatever colour you want.

Weather Widget

Display a real time weather forecast for up to the next three days.



Create exciting content for your network of Digital Signage screens



Create Custom Layouts

This feature allows you to design your own layout with different media zones for your images, videos, webpages, time, date and also allows you to add a scrolling message or RSS feed. You can even give your layout a corporate 'skin' to go around your media zones.



Connectivity

Connect your Android Network Screens to the internet wirelessly via Wi-Fi or via a Local Area Connection. If an internet connection is not available a 3G router can be incorporated into the screen, meaning that we can provide an integrated network solution for any location.



Update From Anywhere

Content can be uploaded and managed from anywhere in the world via our web portal, simply login, upload your images and videos to our secure server and send them directly to your screens.



Schedule Playlists

Display what you like, when you like. Create playlists that will automatically display your desired content a pre-determined times and dates. Whatever your scheduling requirements, our system can support them.



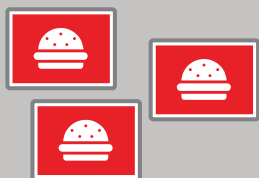
Ultimate Remote Controls

Thanks to the all-in-one nature of the screens you can remotely control functions such as adjusting your screen's brightness, rebooting or formatting your screen, playing and stopping content, adjusting the volume and scheduling on/off times; a truly centralised solution.



Manage Users

Create as many bespoke user accounts as you like. You may wish to limit some functions of the software to specific users, for example you may wish to allow a receptionist to upload media and have access to the screen in the reception area but nothing else - our system allows full user rights control.



Synchronisation

You can synchronise the content across multiple screens that are connected to the same network. This is ideal for advertising networks on escalators or along lengthy corridors.



RSS Feeds

Display your RSS feed in the form of a scrolling text message. This can be anything from up-to-date news and weather to the latest movie reviews and currency exchange rates.

Entertainment

Our network solution can work on a big or small scale, in this example a casino is using the CMS with a 2x2 Video Wall. Placed in a prominent position the Video Wall is designed to help create the fun and friendly atmosphere the casino is after. A live television feed plays constantly entertaining viewers, for this requirement the casino needed a Media Player with a Live Input. The casino also uses the Video Wall to push short term promotions and special deals direct to its target audience.

Live TV Feed

In the entertainment industry, providing customers with a distraction is often of paramount importance. A live television feed is one way to stop customers and visitors from getting bored.

Images

A small zone to the right of the layout cycles through multiple images that promote various features of the casino, its games and food and drink offers.

Logo

An image zone has been used for the company to prominently position their logo on the layout.

Scrolling Text

The scrolling text zone can be updated instantly with up to date offers and news. If required it can also become an RSS feed.

Time and Date

The layout displays the current time and date.



Transport

A network solution in the transport sector opens up a whole world full of opportunities to dazzle commuters with engaging and unique displays. In this example a tube station has used multiple Android Advertising Displays to be positioned alongside an escalator; using the CMS the content on the two screens is synchronised. This allows you to synchronise the same content on each screen or even split a larger video up so that you get the effect of one large display, like in the image below.



Videos

Several promotional adverts of the latest products play in a continuous loop.

Synchronisation

Ordering any number of your screens to synchronise in unison can create a real wow moment. Synchronising involves setting your images and videos to the same length of time and having their transitions synced. You can create memorable advertising by splicing your video content so it appears to play across all the screens regardless of the gaps between the screens like in this example.

Touch CMS

Our Touch Content Management System allows anybody to design engaging interactive Touch Screen content without having to write a single line of code. Thanks to the easy-to-use interface the power is now in your hands to create and control content that your audience will love to interact with. Use your pre-existing images, videos and even your own website to design exciting touch content. Deploy your Touch Screen content to screens anywhere in the world with just the push of a button. You can also send remote commands, designate specific user privileges, schedule your content to appear at set times and dates and even preview and interactive with your content from your PC.

Buttons

Link your different pages together and trigger a host of different actions. Use buttons to prompt videos to start, launch websites, link to different pages or playlists and even launch Android compatible applications; all this without having to write any code. You can also utilise Button Groups to create and manage multiple buttons at once.

Videos

Set your videos to play automatically or assign a 'play' button to have them play on command. You can even assign multiple buttons to play different videos on the same page, allowing you to create a video gallery.

Static Text

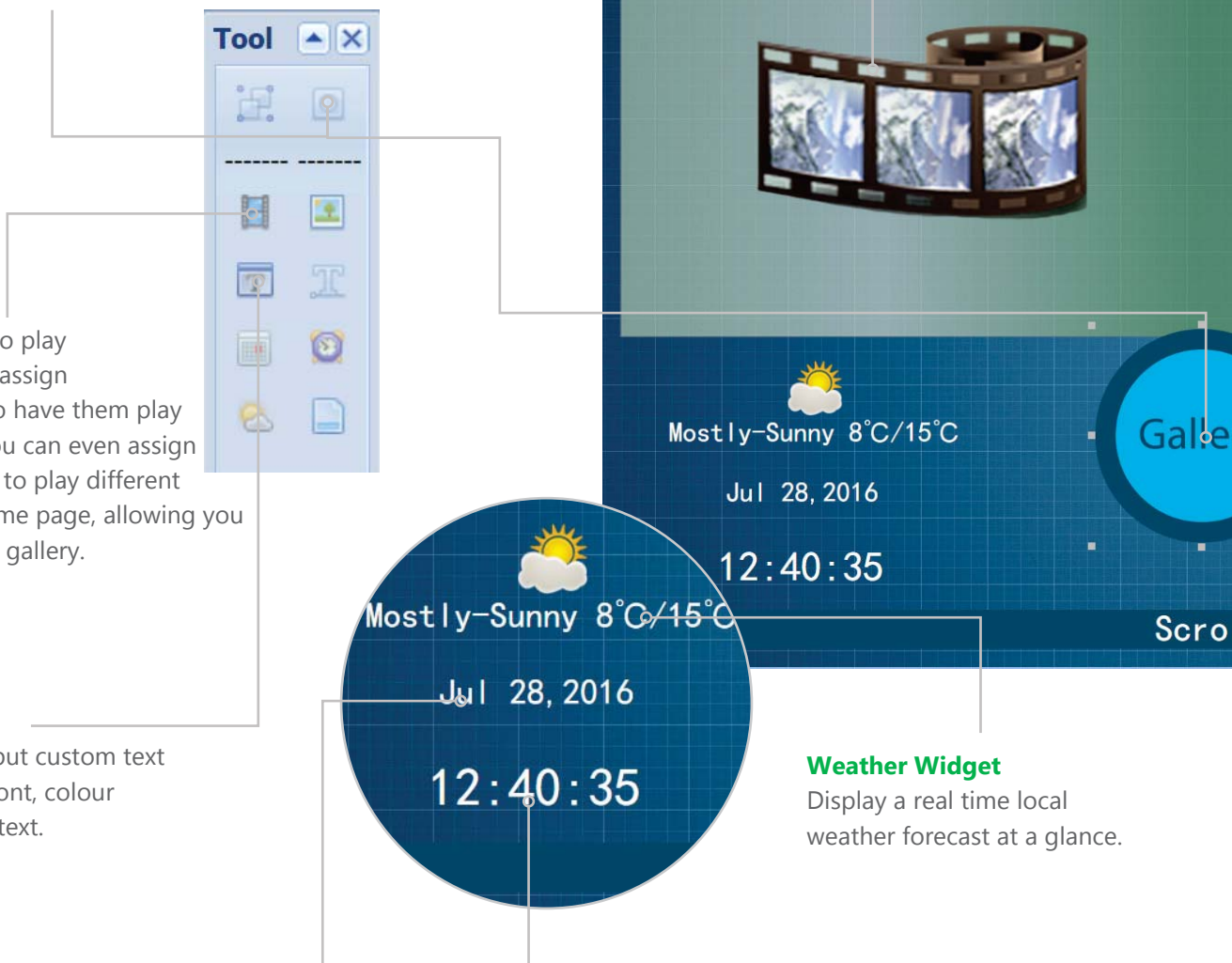
Allows you to input custom text values. Edit the font, colour and size of your text.

Time and Date

Display the time and date in a variety of different formats and choose exactly what colour you want to use.

Backgrounds

Set a specific colour or use your own image as your background to frame your media zones. You can also design your entire interface, including buttons, as a background image and then place empty button zones over your graphics.



Weather Widget

Display a real time local weather forecast at a glance.

What it looks like on screen



Images

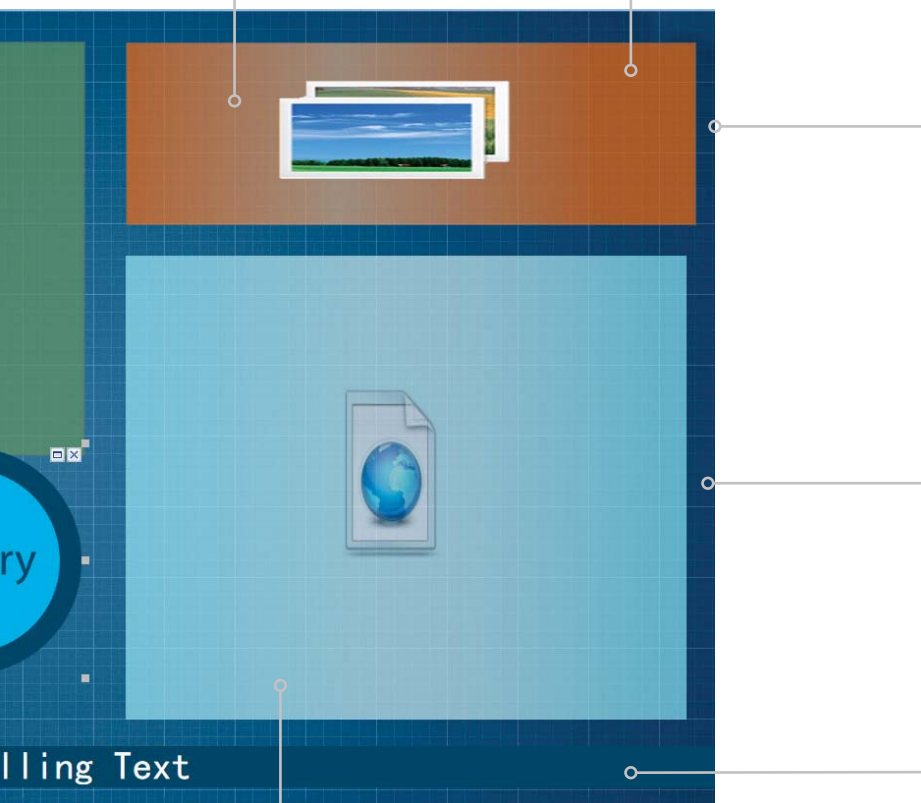
Insert your images into this zone and set the duration time and transition effect to display your images like a slideshow.

Branding

Insert your company's logo and use the company colours to completely personalise your Touch Screen Content.

Media Galleries

Create user friendly galleries of your image and video content. Personalise your carousel with the length of each slide and the transition affect.



Apps

If you have an Android compatible app that you would like to use you can integrate it into your Touch Screen content. It can then be launched within the playlist with the touch of a button.

Screensavers

You can set a 'timeout' period for your content; if the screen isn't touched during this period you can assign a separate playlist to display automatically. This can include images, videos, webpages and even RSS feeds.

Webpages

Incorporating websites and webpages into your Touch Screen content opens up a whole new world of opportunities. Any complicated functions that can't be achieved by using the standard tools of our CMS can be achieved by creating a webpage. Interact with your company website, your social media feeds, online maps, HTML 5 elements and much more.

Scrolling Text

Display a scrolling ticker tape message.



Design exciting touch content for your audience to interact with

Hospitality

Putting the customer's needs first is one of the key components of the hospitality sector; making Touch Screens the natural fit. Touch Screens can always be accessed by your customers and always have the most accurate and up to date information available. In this example a hotel is using a PCAP Touch Screen to display some local attractions for their guests to explore, including directions on how to get there, either by foot, tube or by car.

Weather Widget ☀️
The weather is displayed using both text and icons to accurately depict what the weather is like at a glance.

Background 🏠
The hotel has used their company colours and logo as the background for their Touch Playlist.

Time/Date 📅
In the hotel industry displaying the time and date is essential to allow guests and staff to check in and check out on time.



Webzone 🌐
This webzone is linked directly to Google Maps that shows the route from the hotel directly to each location once selected.

Button Groups ●●○
With so many different buttons on the page, grouping them allows you to distinctly separate them from one another. One set of these buttons allow you to choose the location you would like to visit, the other by the type of transport you wish to take.

Healthcare

Hospitals and healthcare centres can be busy, fast paced environments with the need for effective and intuitive technology. This healthcare centre is using a Wall Mounted Infrared Touch Screen as an interactive information board for their patients. On the home page there is a wayfinding solution for their patients and also links to other pages where they can find out more information about the facility and the people who work there.



Time/Date 📅

In the healthcare industry displaying the time and date is a feature that allows the staff and patients to keep track of appointment times.

Weather Widget ☀️

The weather is displayed using both text and icons to accurately depict what the weather is like at a glance.

Image 🖼️

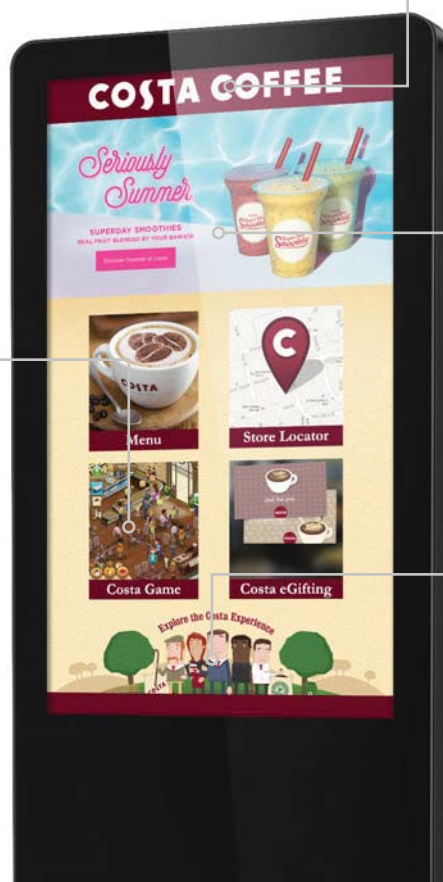
This large image zone features a handy map of the hospital site that allows patients and staff to navigate to where they want to be.

Button Groups ●●●○

Using a Button Group allows you to keep buttons of the same set in formation. Each button in the group uses a separate image and links to the corresponding page, acting as a navigation panel for your Touch Playlist.

Food and Drink

Make your menu interactive and let your customers explore your selection. In this example a coffee store brand is using a PCAP Touch Screen as an interactive menu board. This is a great way to connect with customers not only to display menu items but also to alert them to targeted products and promotions.



Background 🖼️

The predesigned background image allows the company to maximise their branding into the design of their pages.

Image Gallery 🖼️🖼️🖼️

This image gallery is designed to cycle through multiple images that each display specific products and offers that the brand wants to promote.

Button Zone ●

Set transparent button areas so that if a user were to touch this section it would allow them to browse through the company website.

Android Application 🤖

Touching this button launches a pre-existing Android gaming app so you can play it within the Touch Playlist. This is to keep customers entertained while they wait for their order.

WESTSIDE SHOPPING CENTRE

LEVEL 1

ASDA

ASDA	TOPMAN	CLINTONS
DEBENHAMS	TOPSHOP	EVANS
H&M	ANN SUMMERS	GAME
NEW LOOK	BASE	HMV
NEXT	BUILD A BEAR	PANDORA
PRIMARK	CANVAS CITY PRINTS	POUNDLAND
RIVER ISLAND	CARD FACTORY	SUPERDRUG
SUPERDRY	CLAIRES	THE BODY SHOP



DRESSES
UP TO
£100 OFF

#DRESSSALE