

## INDUSTRIAL COMPUTING SOLUTIONS

Here at CDS we are a professional provider of industrial boxed PCs and flat panel PCs. We are a competent solutions provider and more importantly a partner. We work with global manufacturers and customers for the most reliable and flexible solutions on the market. In addition to this, we have multiple years of experience of project management and boast a leading-edge technical knowledge in this field. Not only this, but we also support our customers with access to the most cost-effective, custom-made solutions and cutting-edge technology which sets innovative trends.



**BESPOKE SOLUTIONS**  
**INDIVIDUALLY**  
**CUSTOMISED**  
**FOR YOU, BY YOU**

**LOWER POWER CONSUMPTION**  
**ENERGY SAVING**  
**LONGER LIFESPAN**

## PANEL PC SERIES



- Full range of sizes available - Panel PCs & monitors have options of 4:3 or 16:9 touchscreen displays in sizes 5" to 32"
- Multiple interfaces available
- Diversified configuration
- Resistive and capacitive touch optional
- Comprehensive mounting options
- High brightness upgrades
- Professional design, simple and stylish
- Support for Windows, Android and Linux to give you optimum flexibility
- Power efficient albeit having high performance Intel processors
- Environmental protection up to IP66 (IP65 front face is standard on most offerings)
- More environmentally friendly compared to other offerings on the market with low power consumption and energy saving components
- Long lifespan due to the reliability and longevity of the products – our industrial computing solutions are built to last with long term availability in mind
- Suited to all applications - designed for rugged, retail, industrial as well as outdoor markets and applications.

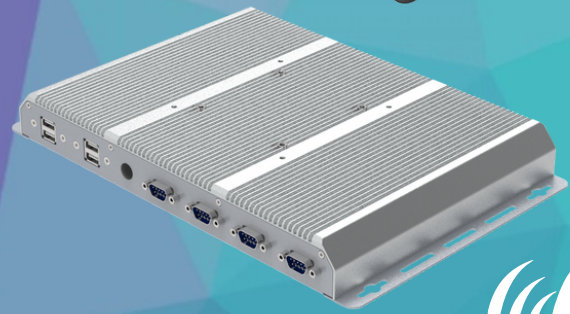


Enquire Today! Call +44 (0) 1634 791600 or email [info@crystal-display.com](mailto:info@crystal-display.com)



## BOXED PC SERIES

- Fanless design, silver aluminium housing, fast cooling
- Intel® Celeron® Quad-core J1900 processor CPU
- 4GB RAM, expandable to 8GB
- 32GB/64GB Industrial SSD
- Supports Win7/8/10, Linux (32Bit, 64Bit)
- Extensive industrial and consumer interfaces
- Audio amplifier with speakers
- Multiple installation modes: 75/100VESA wall mounted, Embedded ect.
- Integrated Wi-Fi-LAN
- 2 years guarantee
- Optional upgrades - Storage Size: 64 GB, 128 GB, or 256 GB (SSD), 8GB Memory, and upgradable i3, i5 & i7 CPU processors



**FLEXIBLE**  
**HIGH PERFORMING**



**UPGRADABLE**  
**CUSTOMISABLE**



FANLESS



W-LAN



COM



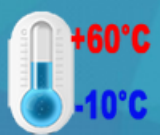
VGA



HDMI



ubuntu



## CUSTOM SERIES OEM/ODM SERVICES



One size does not always fit all, when it comes to special requirements or custom projects, our off the shelf products may not always fit your specific needs.

CDS provide OEM/ODM services to match customer's requests, our professional engineers will work with you to provide a bespoke reliable and optimised solution ideal for your projects.

We have a competitive advantage with new designs with cost effective manufacturing to complete your custom project, within a timely manner and within budget.

In just a few simple steps:

Step 1. Customers provide CDS with the initial requirement or idea.

Step 2. CDS offer a free draft drawing and give some suggestions to customers based on our experience, if needed.

Step 3. Clients confirm the design and specification and CDS manufacture the sample ASAP.

Step 4. Customers receive the sample quickly and confirm sample for mass production.

Enquire Today! Call +44 (0) 1634 791600 or email [info@crystal-display.com](mailto:info@crystal-display.com)