

SPECIFICATION

LCD-215-TRN

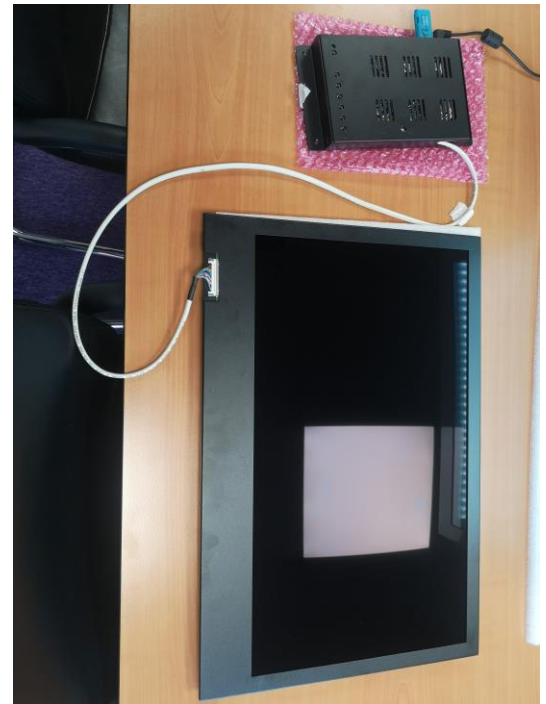
21.5" Transparent Display Integration Kit, 1920x1080

Dated: 15.06.2022

Although they have been around for many years now transparent LCD displays remain one of the most exciting and WOW-factor innovations in LCD technology, opening up a wide range of new opportunities in retail, marketing and many more interesting applications. Even gaming and industrial solutions have optimised the benefits of this incredible technology.

Here at CDS we have our own range of transparent displays manufactured for us, and as we control the manufacturing, we can not only offer more sizes than anyone else in the world, but also guarantee stable supply, long term availability and LCDs with amazing quality. The technology allows you to display information / promotions on the digital display, whilst allowing you to see through it.

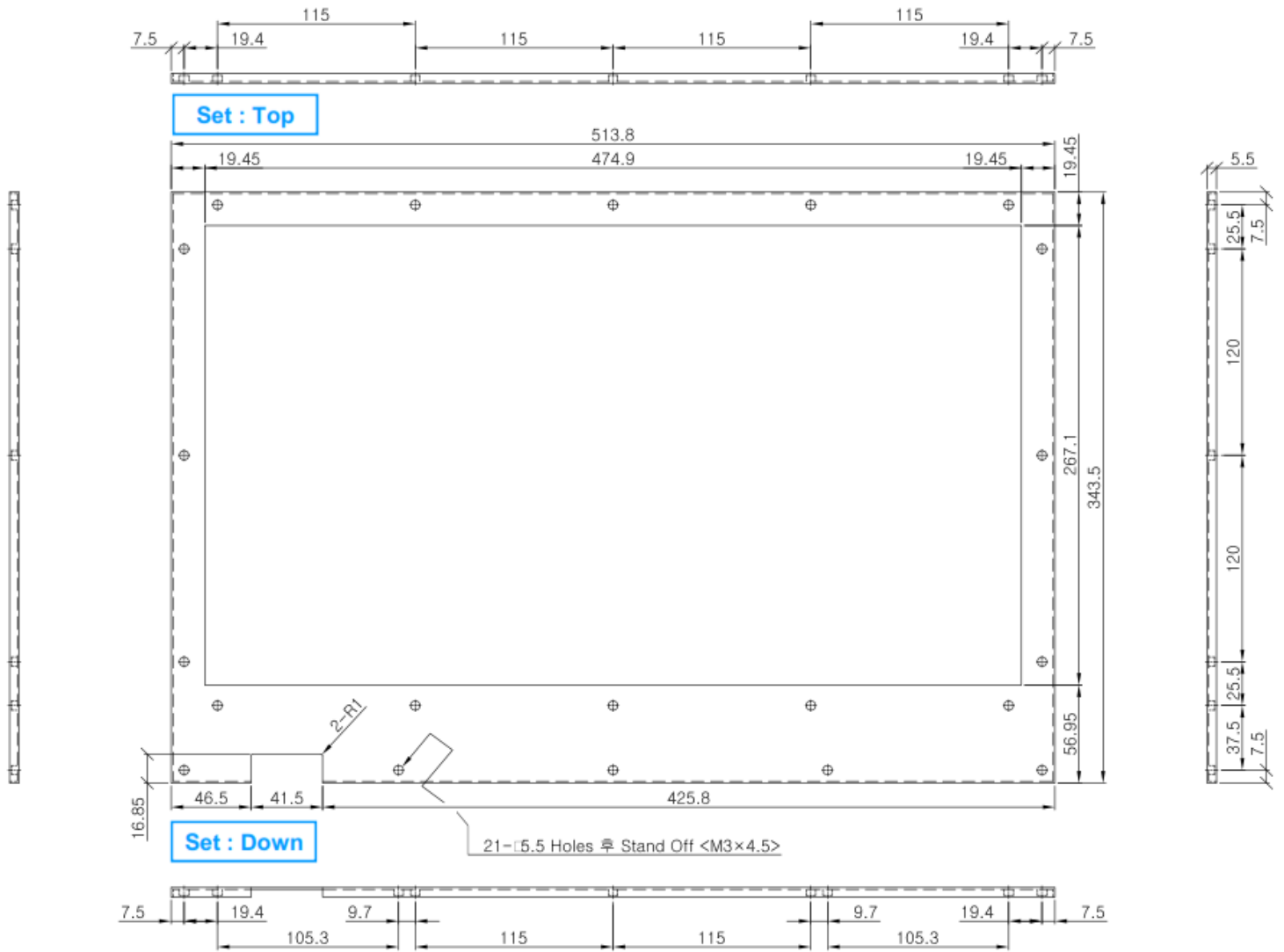
This integration kit is designed to be built into an enclosure produced by the buyer/integrator with the help and experience from our amazing team!



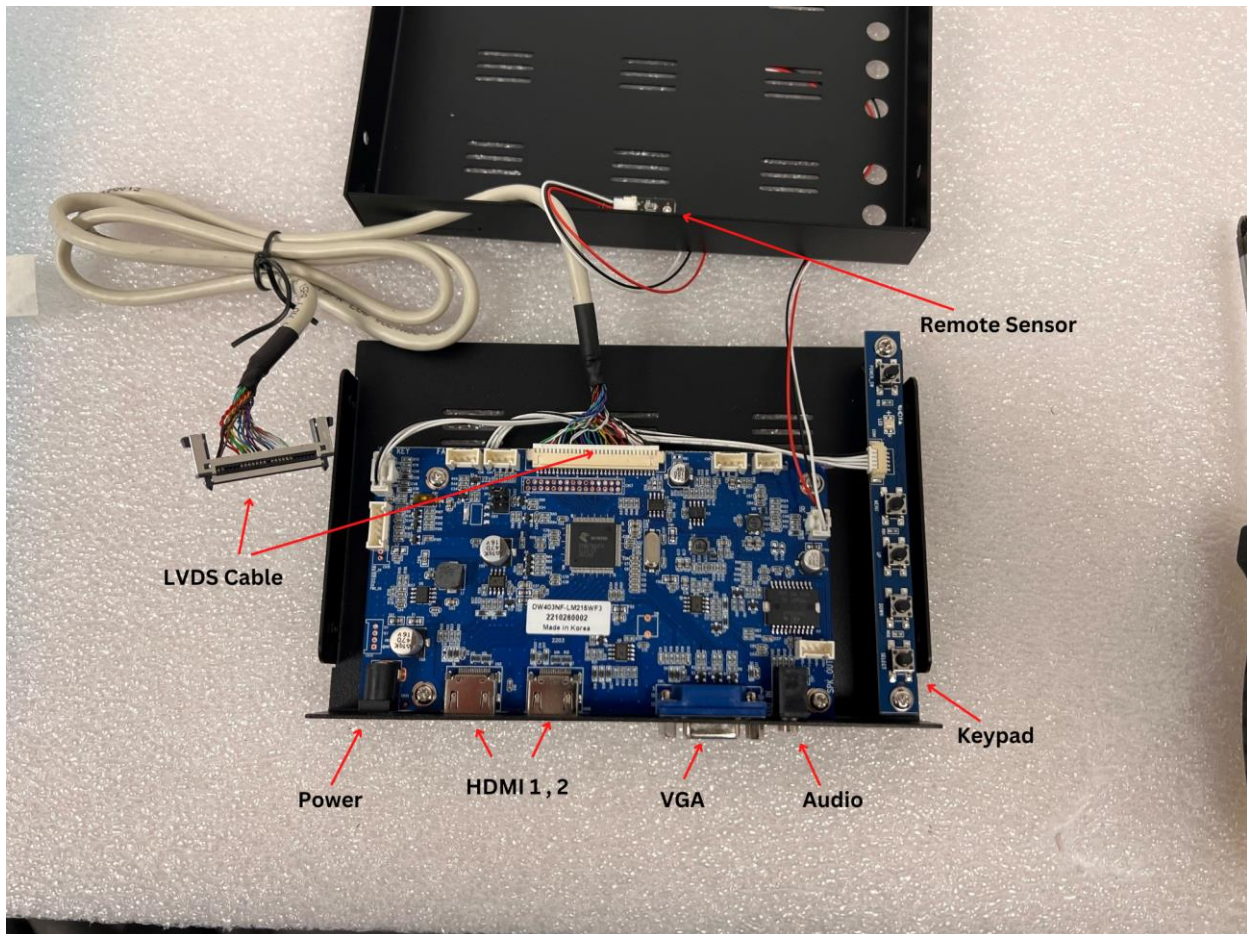
SPECIFICATION

Screen diagonal	21.5 inches
Overall size	513.8 x 343.5 x 5.5 mm
Active area	474.9 x 267.1 mm
Screen max resolution	1920 x 1080
Transparency	15%
Monitor aspect ratio	16:9
Contract ratio	1000:1
Viewing Angle H/V	89° / 89° / 89° / 89°
Inputs	HDMI x2 / VGA
Operating temperature	0°C ~ 50°C
Operating humidity	<90%
Accessories	LVDS cable from AD board to panel, Media Board Power Supply, Power Cables, Remote control
Optional Accessories	Touchscreen, metal case enclosure for media board, LED light bars

DRAWING



AD BOARD



Input resolution	Up to WUXGA (1920x1200@60Hz)
Output resolution	VGA up to WUXGA(1920x1200@60Hz)
Colors	16.7M
Power Supply	Single power supply +12V or SMPS power
Operating temperature	0 ~ 60 °C
Inputs	VGA , HDMI *2
Panel voltage	3.3V, 5.0V , 12.0V (selectable with jumpers)
LVDS output	Dual 2ch , 8bit
Audio Output	5W x2 , 8Ω /CH
Backlight support	PWM & Analog Dimming
Plug & Play	VESA DDC 2BI
Power management	Compatible with Energy Star, DPMS
Remote Control	optional
Fan(Temperature) Control	optional
Auto Backlight(Light Sensor)	optional
RS232 Control	optional

Need any additional information?

If you need any assistance with pricing information, technical support or require any additional information our team would be more than happy to assist.



CONTACT US:

Crystal Display Systems Ltd
Unit 6 M2M Park, Fort Bridgewood,
Maidstone Road, Rochester, Kent
ME1 3DQ
United Kingdom

T: +44 (0) 1634 791600
E: info@crystal-display.com
W: crystal-display.com

**SPECIALIST GLOBAL SUPPLIERS IN INNOVATIVE LCD
DISPLAY SOLUTIONS AND DIGITAL SIGNAGE SOLUTIONS**

*E & OE. Specifications may be subject to change without prior notice

More information can be found at:
crystal-display.com